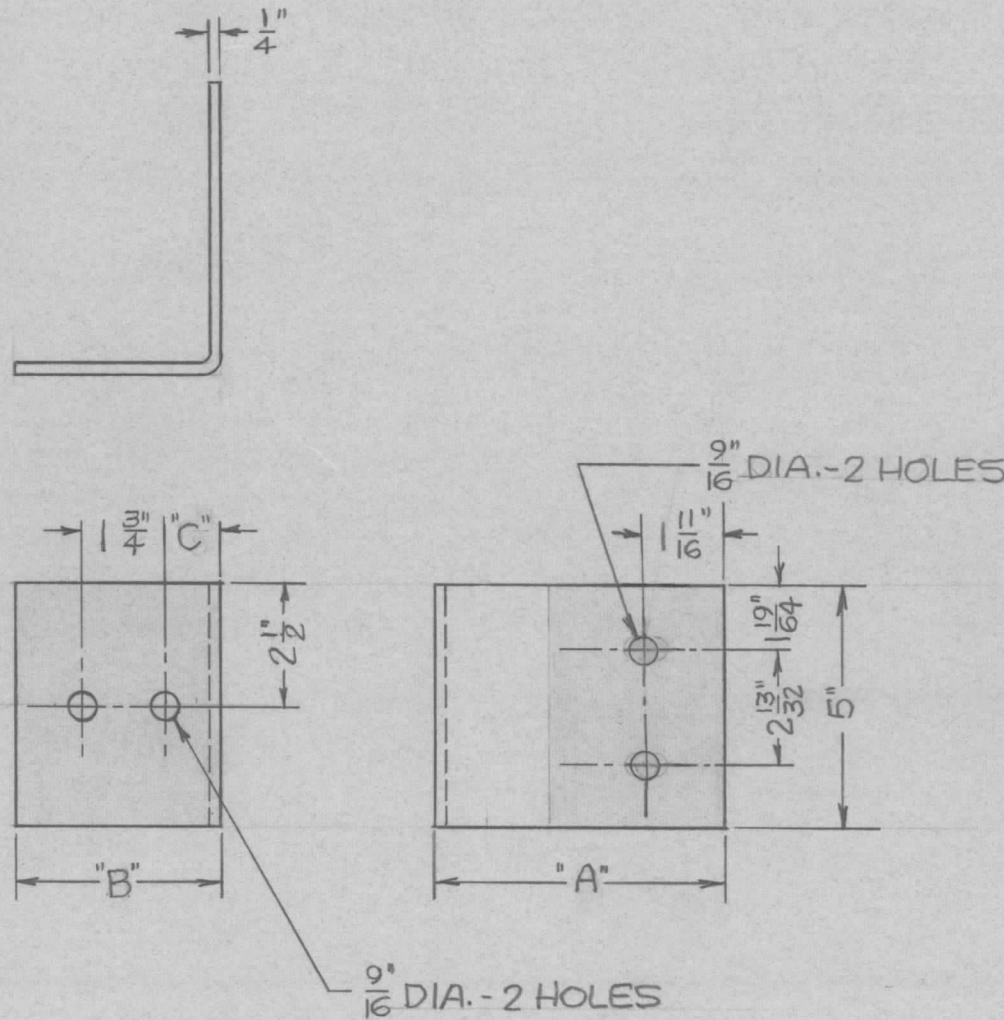


PART NO.	A	B	C	REQD.
PM1530-1	4"	3 $\frac{7}{8}$ "	1 $\frac{3}{8}$ "	3
-2	4 $\frac{3}{4}$ "	6"	1 $\frac{1}{2}$ "	3
-3	7 $\frac{3}{4}$ "	3 $\frac{7}{8}$ "	1 $\frac{1}{4}$ "	3
-4	8 $\frac{1}{2}$ "	6"	1 $\frac{1}{8}$ "	3

REVISIONS				
LTR	DESCRIPTION	DATE	DRAFT	APPD



**NOTES:**

- SILVER PLATE .0003 AT ALL CONNECTION POINTS (SHADED AREAS)
- STAMP PART NUMBERS

QTY REQ	ITEM	PART NO.	MANUFACTURER	DESCRIPTION	SYM
---------	------	----------	--------------	-------------	-----

PARTS LIST

UNLESS OTHERWISE SPECIFIED DIMENSIONS ARE IN INCHES AND INCLUDE CHEMICALLY APPLIED OR PLATED FINISHES REMOVE ALL BURRS AND SHARP EDGES.		DRAWN FERNANDEZ	DATE 5/18/73	THE TMC SYSTEMS AND POWER CORPORATION SPRINGFIELD, VIRGINIA	
TOLERANCES ON FRACTIONS ANGLES DECIMALS ± 1/32"		CHECKED <i>EA</i>	DATE 5/21/73		
MATERIAL 6101-T61 ALUM		D. ENG. <i>EA</i>	DATE 5-22-73		
FINISH SEE NOTE		P. ENG. <i>ERB</i>	DATE 22 MAY 73		
APPLICATION		P. MGR.	DATE		
NEXT ASSY	USED ON	CHIEF, ENG. DEPT. <i>R. ...</i>	DATE 22 MAY 73	SIZE B	CODE IDENT NO. 24146
				DWG. NO. PM1530	REV
				SCALE 1/4	SHEET   OF

**NOTICE TO PERSONS RECEIVING THIS DRAWING**

THE TMC SYSTEMS AND POWER CORPORATION claims proprietary right in the material disclosed hereon. This drawing is issued in confidence for engineering information only and may not be reproduced or used to manufacture anything shown hereon without permission from THE TMC SYSTEMS AND POWER CORPORATION to the user. This drawing is loaned for mutual assistance and is subject to recall at any time.

BUS BAR DETAILS