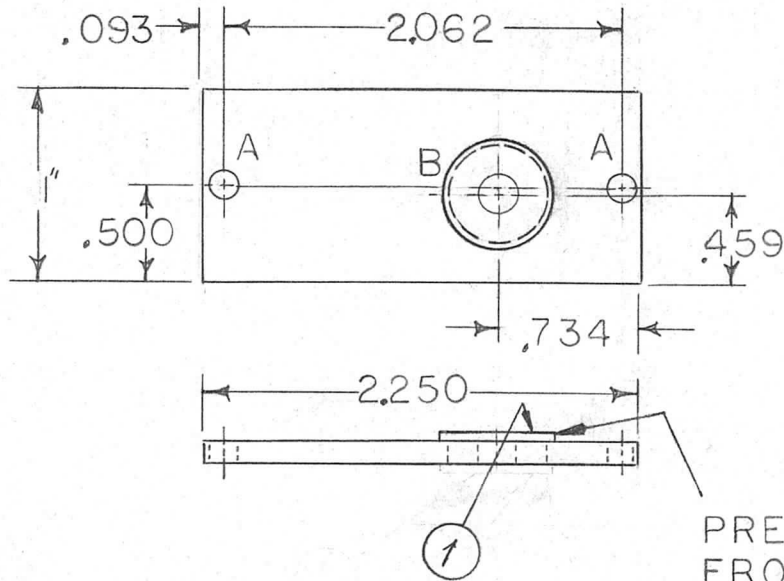


APPLICATION			REVISIONS						
QTY	MODEL USED ON	ASS'Y NO.	LTR	DESCRIPTION	DATE	E.M.N.NO	DRAFT	CHKD	APPD
1	TLAA -1K	AX5132	Ø	ORIG. RELEASE FOR PROD.	9/9/71		RG		
			A	IT. 1 WAS MTD. FRM. OPP. SIDE	4/26/72	20632	GE	Ø	Ø
			B	OBS. REPLACED BY PM1583	11/11/75	21313	CL	CL	CL
			C	REMOVE "OBSOLETE" & "S/P"	11/9/76	21484		K.P.	



PRESS FIT ITEM 1 FROM THIS SIDE

HOLE	DESCRIPTION	REQD
A	9/64 DIA	2
B	.500 DIA	1

OBSOLETE
REPLACED BY PM1583

USE FOR SPARE PARTS ONLY

REQ'D	ITEM	PART NUMBER	DESCRIPTION	SYM.
1	1	BB126-4	RACE BEARING	B
BLUETTI LIST OF MATERIAL				
UNLESS OTHERWISE SPECIFIED DIMENSIONS ARE IN INCHES AND INCLUDE CHEMICALLY APPLIED OR PLATED FINISHES DECIMALS: .X ± .05, .XX ± .01, .XXX ± .005 FRACTIONS: 1/64, ANGLES: 0°-30'			THE TECHNICAL MATERIEL CORP. MAMARONECK, NEW YORK	
MATERIAL 1/8 THK. ALUM 2024-T3 FINISH 5404 YEL IRIDITE			PLATE, REAR GEAR TUNE ASS'Y	
FINAL APPROVAL: <i>[Signature]</i> DATE: 9-9-71 MECH. DES.: A. PETROCCA DATE: 9-9-71 ELECT. DES.: DATE: CHECKED: DATE: DRAWN: <i>B. Forlano</i> DATE: 8-24-71			SIZE: A CODE IDENT. NO.: 82679 DWG NO.: PM1502 ISSUE: C	
NOTICE TO PERSONS RECEIVING THIS DRAWING THE TECHNICAL MATERIEL CORPORATION claims proprietary right in the material disclosed hereon. This drawing is issued in confidence for engineering information only and may not be reproduced or used to manufacture anything shown hereon without permission from THE TECHNICAL MATERIEL CORPORATION to the user. This drawing is loaned for mutual assistance and is subject to recall at any time.			SCALE: 1/1 SHEET: 1 OF 1	