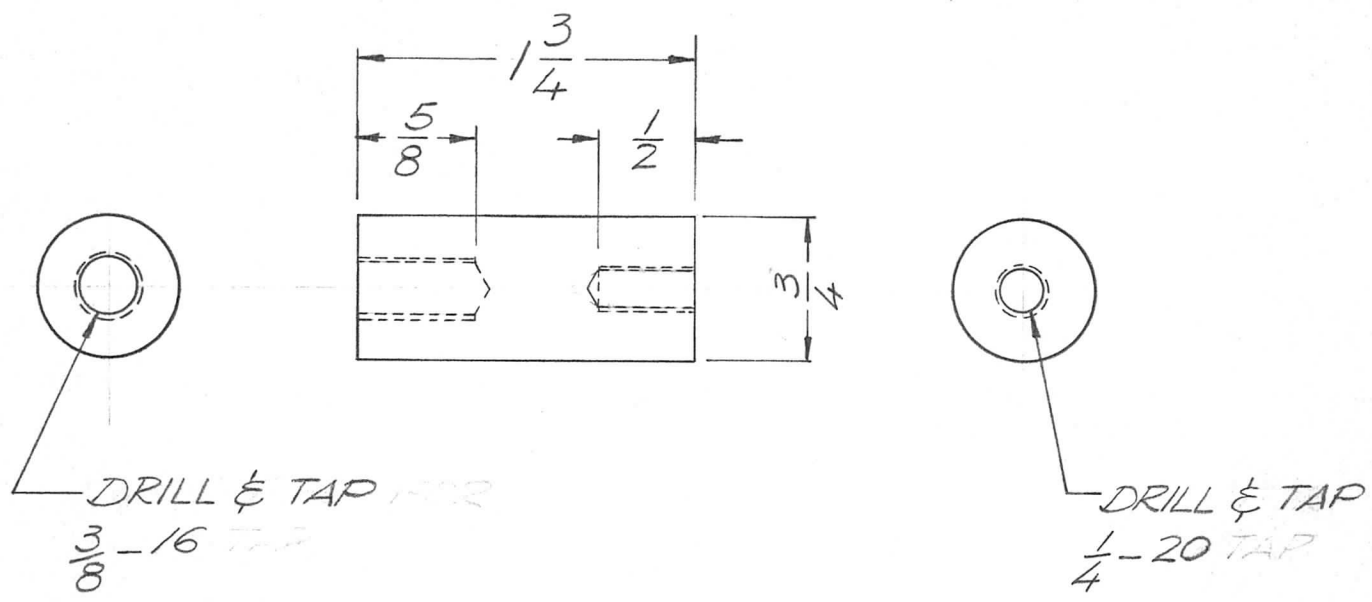


APPLICATION			REVISIONS							
QTY	MODEL USED ON	ASS'Y NO.	LTR	DESCRIPTION	DATE	E.M.N.NO	DRAFT	CHKD	APPD	
1	PALA-10K	BMA383	Ø	ORIG. RELEASE FOR PROD	10/29/69		GE	BR		
			A	ADD OBSOLETE	4/5/72	20580	GE	ES	ES	



NOTE: REMOVE ALL BURRS
& SHARP EDGES

OBSOLETE
USE FOR PALA-10K & HFLA-10K WITH 8794
FINAL AMP SPARE PARTS ONLY.

UNLESS OTHERWISE SPECIFIED DIMENSIONS ARE IN INCHES AND INCLUDE CHEMICALLY APPLIED OR PLATED FINISHES		REQ'D	ITEM	PART NUMBER	DESCRIPTION	SYM.	
DECIMALS X ± .05 .XX ± .01 .XXX ± .005		BUDETTI		LIST OF MATERIAL			
FRACTIONS 1/64 TOLS. ANGLES 0° - 30'		FINAL APPROVAL	DATE	THE TECHNICAL MATERIEL CORP.			
MATERIAL ALUM.	MECH. DES.	ALP	10/29/69	MAMARONECK, NEW YORK			
FINISH S404 - YEL. IRIDITE	ELECT. DES.			NUT, STANDOFF, SPECIAL			
	CHECKED						
	DRAWN	EVANGELIST	10/29/69				
NOTICE TO PERSONS RECEIVING THIS DRAWING THE TECHNICAL MATERIEL CORPORATION claims proprietary right in the material disclosed hereon. This drawing is issued in confidence for engineering information only and may not be reproduced or used to manufacture anything shown hereon without permission from THE TECHNICAL MATERIEL CORPORATION to the user. This drawing is loaned for mutual assistance and is subject to recall at any time.				SIZE	CODE IDENT. NO.	DWG NO.	ISSUE
				A	82679	PM1431	A
				SCALE		SHEET	OF