

5

4

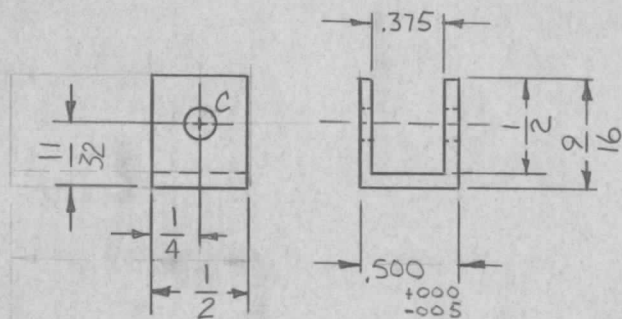
3

2

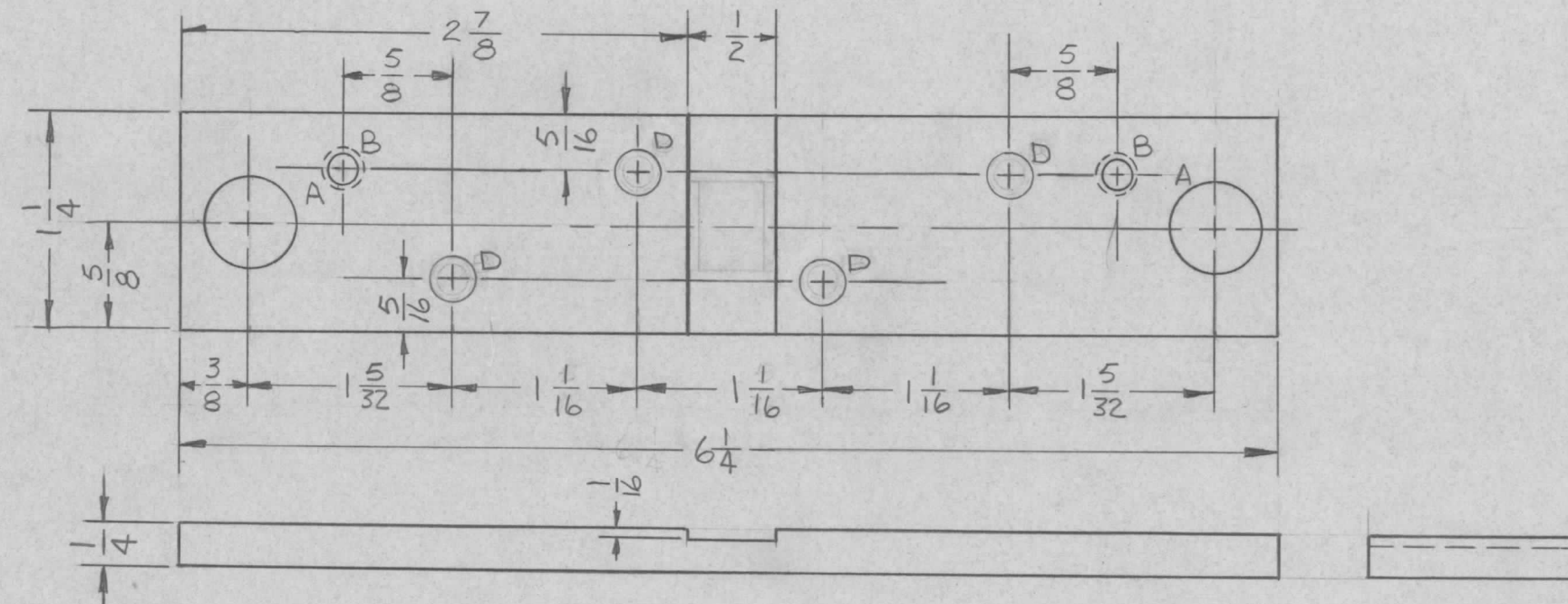
1

REVISIONS

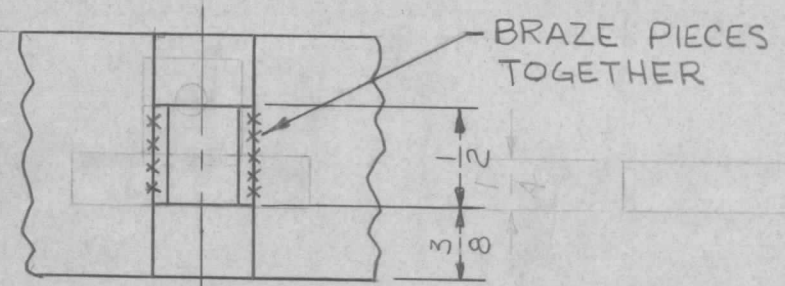
ZONE	LTR	DESCRIPTION	DATE	E.M.N.NO	DRAFT	CHKD	APPD
	Ø	ORIGINAL RELEASE FOR PRODUCTION	4/31/69			me	



DETAIL "A"



HOLE	DESCRIPTION	REQ'D
A	1/2 DIA.	2
B	DRILL & TAP FOR 1032 (THRU)	2
C	11/32 DIA (THRU BOTH SIDES)	1
D	17/64 DIA.	4



DETAIL "B"

1	PALA-10K	AP48
QTY / UNIT	MODEL USED ON	ASS'Y NO.

APPLICATION

CODE

NOTICE TO PERSONS RECEIVING THIS DRAWING
 THE TECHNICAL MATERIEL CORPORATION claims proprietary right in the material disclosed hereon. This drawing is issued in confidence for engineering information only and may not be reproduced or used to manufacture anything shown hereon without permission from THE TECHNICAL MATERIEL CORPORATION to the user. This drawing is loaned for mutual assistance and is subject to recall at any time.

UNLESS OTHERWISE SPECIFIED DIMENSIONS ARE IN INCHES AND INCLUDE CHEMICALLY APPLIED OR PLATED FINISHES

DECIMALS	FRACTIONS
.X ± .05	1/64
.XX ± .01	TOLS. ANGLES
.XXX ± .005	0° .30'

MATERIAL H-H BRASS

FINISH #135 BRIGHTNI-PL

REQ'D	ITEM	PART NUMBER	DESCRIPTION	SYM.
-------	------	-------------	-------------	------

F BUDETTI LIST OF MATERIAL

FINAL APPROVAL *[Signature]* DATE 6/27/69
 MECH. DES. *[Signature]* DATE
 ELECT. DES. DATE
 CHECKED DATE
 DRAWN *[Signature]* DATE 6.26.69

THE TECHNICAL MATERIEL CORP.
 MAMARONECK, NEW YORK

BAR, SHORTING

SIZE	CODE IDENT. NO.	DWG NO.	ISSUE
B	82679	PM 1418	Ø
SCALE NOT TO SCALE		SHEET OF	