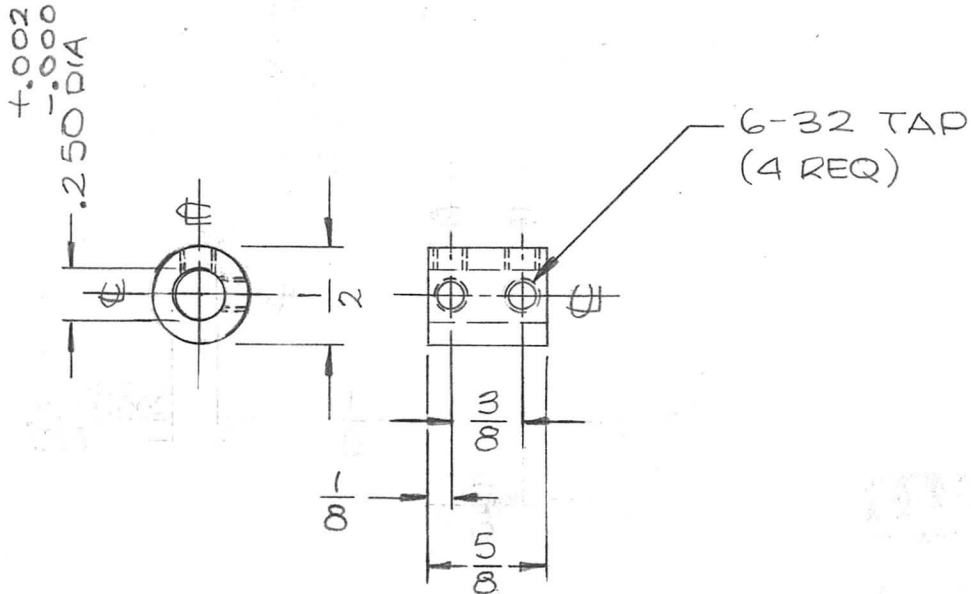


APPLICATION			REVISIONS						
QTY	MODEL USED ON	ASS'Y NO.	LTR	DESCRIPTION	DATE	E.M.N.NO	DRAFT	CHKD	APPD
7	VOX-7	BMA114	X	EXPERIMENTAL RELEASE	11/7/67				
5	MMX-()	BMA105	X1	REMOVED HFSR-4	11-10-67		H.G.		
			Ø	ORIGINAL RELEASE FOR PRODUCTION	5/9/68	Ø	H.G.		



UNLESS OTHERWISE SPECIFIED DIMENSIONS ARE IN INCHES AND INCLUDE CHEMICALLY APPLIED OR PLATED FINISHES		REQ'D	ITEM	PART NUMBER	DESCRIPTION	SYM.
DECIMALS: .X ± .05, .XX ± .01, .XXX ± .005 FRACTIONS: 1/64, ANGLES: 0°-30° TOLS.					LIST OF MATERIAL SK3213 M568	
MATERIAL BRASS, FREE MACHINING		FINAL APPROVAL		DATE	THE TECHNICAL MATERIEL CORP. MAMARONECK, NEW YORK COUPLING	
FINISH S135 NICKEL PLATE		MECH. DES.		DATE		
S401-451		ELECT. DES.		DATE		
		CHECKED		DATE		
		DRAWN		DATE		

NOTICE TO PERSONS RECEIVING THIS DRAWING THE TECHNICAL MATERIEL CORPORATION claims proprietary right in the material disclosed hereon. This drawing is issued in confidence for engineering information only and may not be reproduced or used to manufacture anything shown hereon without permission from THE TECHNICAL MATERIEL CORPORATION to the user. This drawing is loaned for mutual assistance and is subject to recall at any time.				SIZE A	CODE IDENT. NO. 82679	DWG NO. PM1333	ISSUE Ø
SCALE 1:1			SHEET		OF		