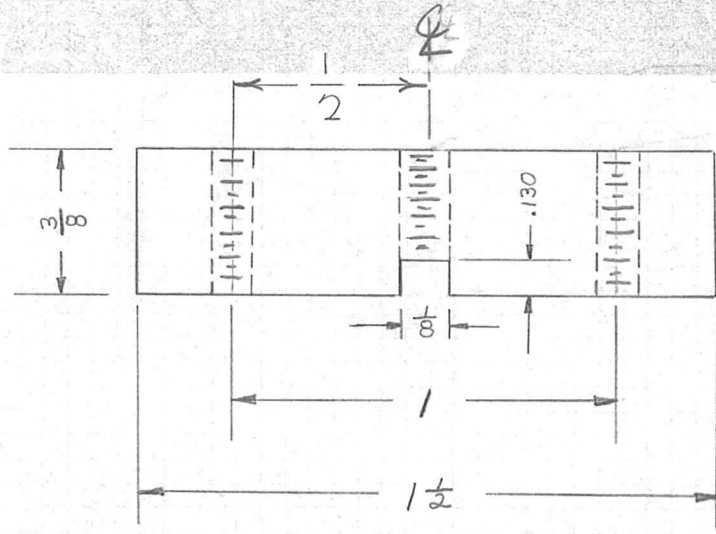
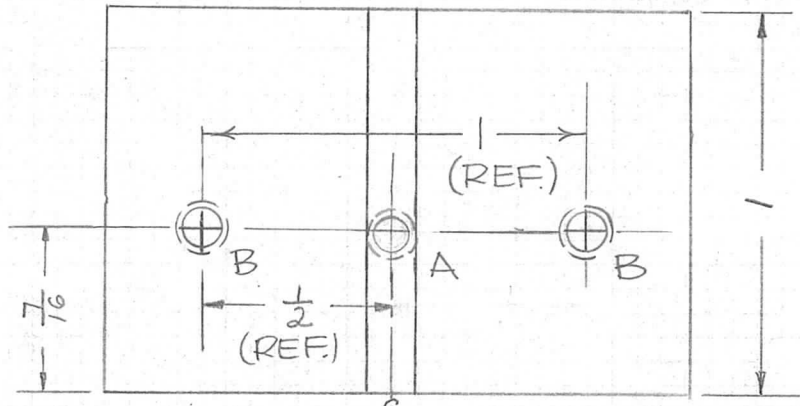


REQ. PER UNIT	USED ON			PM1328	Ø
	MODEL	ASS'Y. NO.	DATE		
1	TER3500		8-31-66		



HOLES REQ
 A-DRILL & TAP 1
 8-32 THRU
 B-DRILL & TAP 2
 10-32 THRU



Note:
 USED w/UG 352*

							REQ. ITEM	PART NO.	STURMER	DESCRIPTION	SYMBOL
							AS NOTED		THE TECHNICAL MATERIEL CORP. MAMARONECK, NEW YORK		
							STOCK SIZE		PLATE, FLAT		
Ø	ORIGINAL RELEASE FOR PRODUCTION	4/16/66	Ø	CV			ALUMINUM				
SYM	DESCRIPTION	DATE	CH. NO.	DRAFTS	CHECKER	ENG. APP.	MATERIAL				
UNLESS OTHERWISE SPECIFIED DIMENSIONS ARE IN INCHES AND INCLUDE CHEMICALLY APPLIED OR PLATED FINISHES						SCALE	2024-T4		JC	JCB	Final Approval
						CODE	TYPE & TEMPER	HEAT TREAT. SPEC.	DRAWN	CHECKED	FINAL APPROVAL
DECIMALS .X ± .05 .XX ± .01 .XXX ± .005	TOLERANCES	FRACTIONS ± 1/64 ANGLES ± 0° 30'					S404 YELLOW IRIDITE			9-2-66	PM1328 Ø
							FINISH & SPEC. NO.		ELEC. DES. APP.	MECH. DES. APP.	