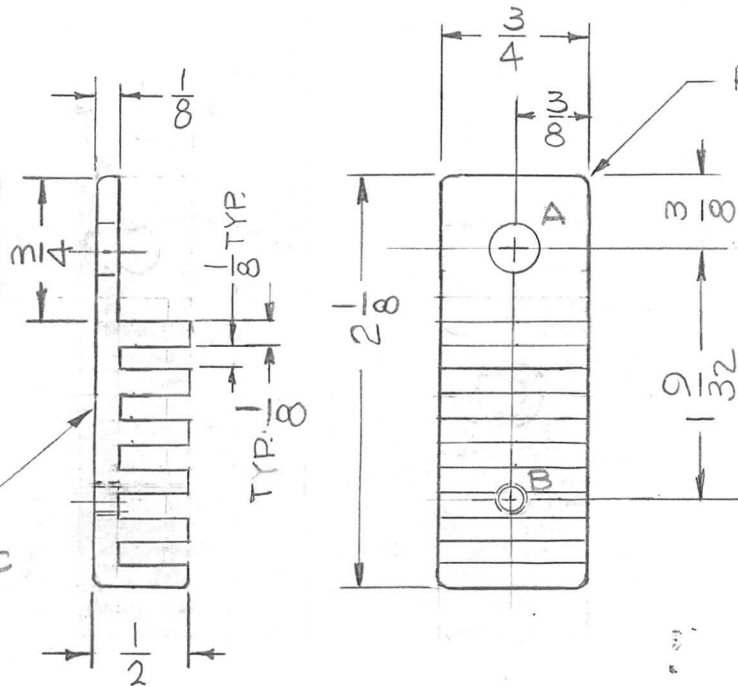


REQ. PER UNIT	USED ON			PM1322	φ
	MODEL	ASS'Y. NO.	DATE		
1	TLAA-2.5K	AS128	8-13-66		



ROUND ALL SHARP EDGES
1/32R.

HOLE	DESCRIPTION	REQ
A	1/4 DIA.	1
B	6-32 TAP	1

MARK TMC P/N 1/8 HIGH GOTHIC W/LATEST REV. LETTER

φ	ORIGINAL RELEASE FOR PRODUCTION	11-18-66	φ	RME			REQ. ITEM	PART NO.	BUDETTI DESCRIPTION	SYMBOL	
X2	2 1/8 WAS 2	8-30-66	X2	<i>SPK</i>		<i>ke</i>	AS NOTED		THE TECHNICAL MATERIEL CORP. MAMARONECK. NEW YORK		
X1	1/8 ADDED, 3/4 WAS 5/8 (DELE FIN)	8-24-66	X1	<i>SPK</i>	<i>QCB</i>	<i>QCB</i>	STOCK SIZE		WIPER, CONTACT ELECT		
X	EXP. RELEASE	8-13-66		G.D.L	<i>QCB</i>		ALUMINUM				
SYM	DESCRIPTION	DATE	CH. NO.	DRAFTS	CHECKER	ENG. APP.	MATERIAL				
UNLESS OTHERWISE SPECIFIED DIMENSIONS ARE IN INCHES AND INCLUDE CHEMICALLY APPLIED OR PLATED FINISHES		SCALE		1:1			2024-TA	8-13-66	<i>QCB</i>	<i>QCB</i>	<i>QCB</i>
DECIMALS .X ± .05 .XX ± .01 .XXX ± .005		FRACTIONS ± 1/64 ANGLES ± 0° 30'		TOLERANCES		CODE A	TYPE & TEMPER S245 SILVER PLATE S423 SILVER KOTE	HEAT TREAT. SPEC.	DRAWN <i>QCB</i>	CHECKED <i>QCB</i>	FINAL APPROVAL <i>QCB</i>
							FINISH & SPEC. NO.	ELEC. DES. APP.	MECH. DES. APP.	PM1322 φ	