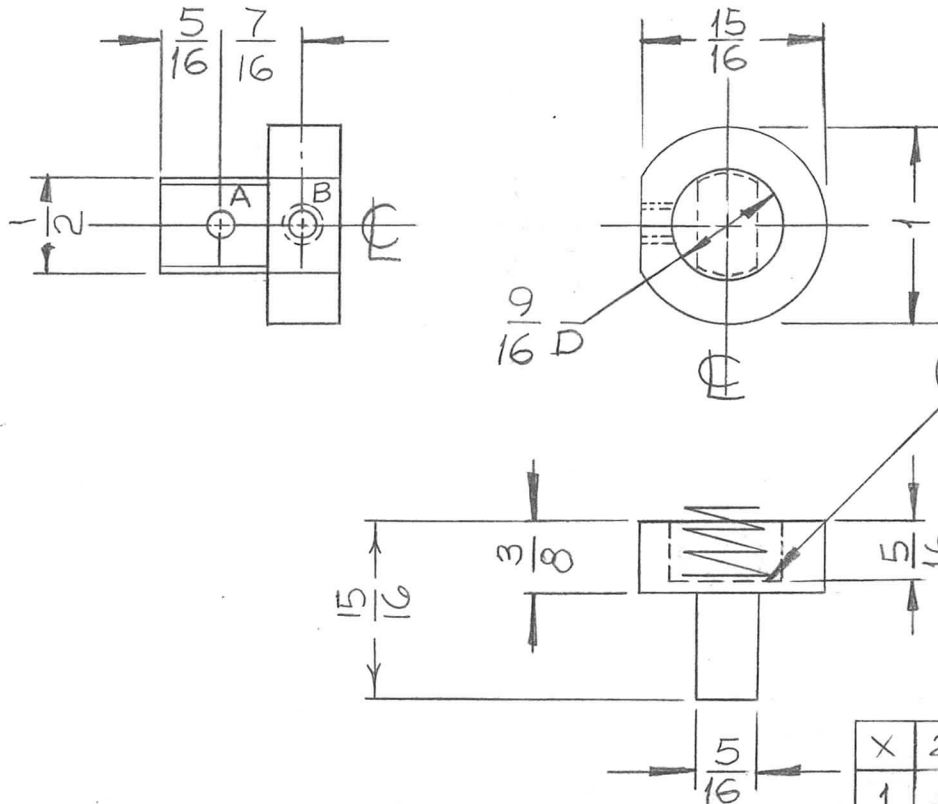


REQ. PER UNIT	USED ON			PM1300 $\emptyset$
	MODEL	ASS'Y. NO.	DATE	
1	AP129		4-11-66	

HOLE	DESCRIPTION	REQ'D
A	9/64 DIA	1
B	DRILL & TAP 8-32	1



REQ. ITEM	PART NO.	DESCRIPTION	SYMBOL
X 2	BS100	SOLDER, TIN ALLOY	
1 1	SP128-2	SPRING, FRICTION DRIVE	
1 DIA		THE TECHNICAL MATERIEL CORP. MAMARONECK, NEW YORK	
STOCK SIZE			
BRASS		CONTACT, ELEC.	
MATERIAL			
FREE MACH.		WVW	QCS
TYPE & TEMPER	HEAT TREAT. SPEC.	DRAWN	CHECKED
S135-NICKEL PL. BRIGHT			FINAL APPROVAL
FINISH & SPEC. NO.		ELEC. DES. APP.	MECH. DES. APP.

SYM	DESCRIPTION	DATE	CH. NO.	DRAFTS	CHECKER	ENG. APP.
$\emptyset$	ORIGINAL RELEASE FOR PRODUCTION	2/23/67	$\emptyset$	CV		
X <sub>1</sub>	PICTORIAL CORRECTED	5-24-66	X <sub>1</sub>	WVW		
X	EXPER. RELEASE	4/13/66		WVW	QCS	
UNLESS OTHERWISE SPECIFIED DIMENSIONS ARE IN INCHES AND INCLUDE CHEMICALLY APPLIED OR PLATED FINISHES		SCALE 1:1				
DECIMALS .X $\pm$ .05 .XX $\pm$ .01 .XXX $\pm$ .005	TOLERANCES	FRACTIONS $\pm$ 1/64 ANGLES $\pm$ 0° 30'	CODE			

PM1300  $\emptyset$