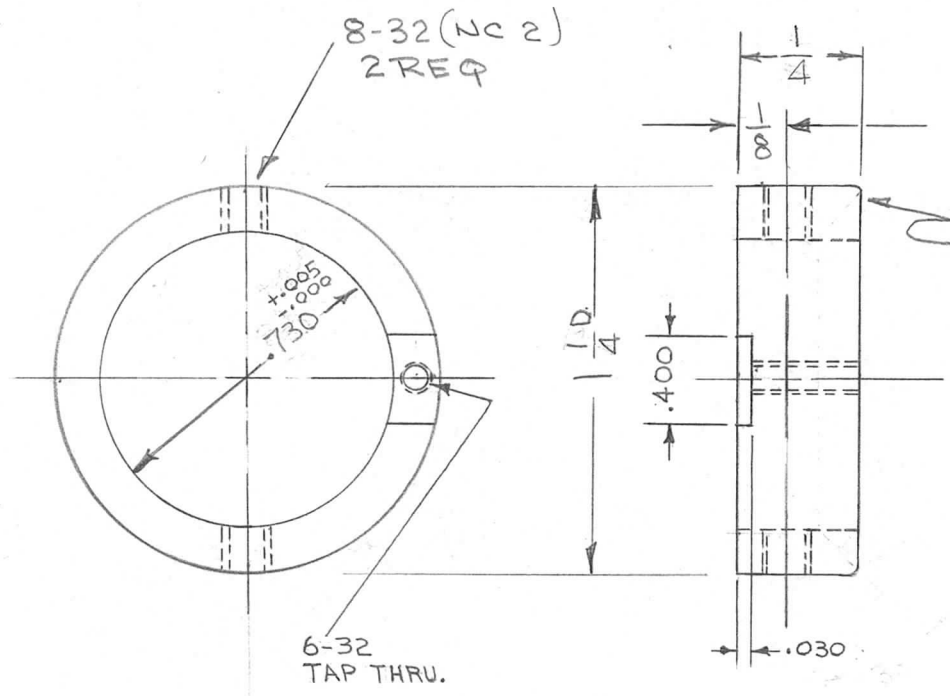


REQ. PER UNIT	USED ON			PM1295	A
	MODEL	ASS'Y. NO.	DATE		
1	TLAA-2.5K		11-23-65		



NOTE:
REMOVE SHARP EDGES

							REQ. ITEM	PART NO.	BUDETTI	DESCRIPTION	SYMBOL	
								AS NOTED	THE TECHNICAL MATERIEL CORP. MAMARONECK, NEW YORK			
A	DWG RE-INSTATED (WAS OBS) WITH CHANGES	6-29-66	16680	RME	QCB	QCB		STOCK SIZE	COLLAR, SHAFT			
Ø	ORIGINAL RELEASE FOR PRODUCTION	6-23-66	#	WTO				BRASS				
SYM		DATE	CH. NO.	DRAFTS	CHECKER	ENG. APP.		MATERIAL				
UNLESS OTHERWISE SPECIFIED DIMENSIONS ARE IN INCHES AND INCLUDE CHEMICALLY APPLIED OR PLATED FINISHES		SCALE		//				1/2 HARD	JDEG	QCB	Q.B. / [Signature]	
DECIMALS .X ± .05 .XX ± .01 .XXX ± .005		FRACTIONS ± 1/64 ANGLES ± 0° 30'		TOLERANCES				TYPE & TEMPER	HEAT TREAT. SPEC.	DRAWN	CHECKED	FINAL APPROVAL
								FINISH & SPEC. NO.	ELEC. DES. APP.	MECH. DES. APP.	PM1295 A	