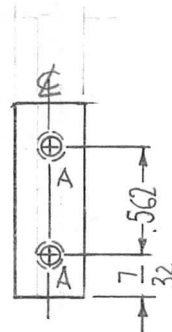
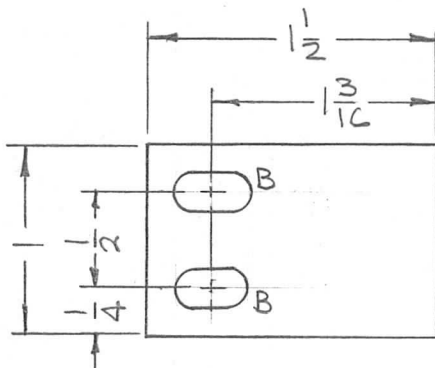


REQ. PER UNIT	USED ON			PM1282	Ø
	MODEL	ASS'Y. NO.	DATE		
1	TST-10K		8-9-65		



HOLES:

A~DR.#TAP 8-32 X 1/2 DP. 2REQ.

B~ 3/16 X 3/8 SLOT. 2REQ.

							REQ. ITEM	PART NO.	F. BUDETTI	DESCRIPTION	SYMBOL
								3/8 THICK	THE TECHNICAL MATERIEL CORP.		
								STOCK SIZE	MAMARONECK, NEW YORK		
Ø	ORIGINAL RELEASE FOR PRODUCTION	3-3-66	-A	Jc	JCB	arc		ALUMINUM	HOLDER, ELECT. CONTACT		
SYM	DESCRIPTION	DATE	CH. NO.	DRAFTS	CHECKER	ENG. APP.		MATERIAL			
UNLESS OTHERWISE SPECIFIED DIMENSIONS ARE IN INCHES AND INCLUDE CHEMICALLY APPLIED OR PLATED FINISHES		SCALE		1:1			2024-T4		JCB		M. Han
DECIMALS .X ± .05 .XX ± .01 .XXX ± .005		FRACTIONS ± 1/64 ANGLES ± 0° 30'		CODE A			TYPE & TEMPER S245 SILVER PLATE S423 SILVER POTE	HEAT TREAT. SPEC.	DRAWN	CHECKED	FINAL APPROVAL
TOLERANCES					FINISH & SPEC. NO.		ELEC. DES. APP.	MECH. DES. APP.	PM1282 Ø		