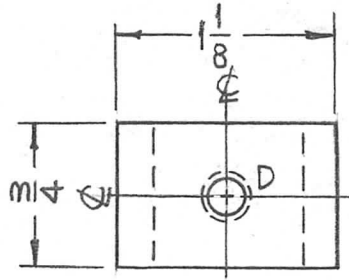
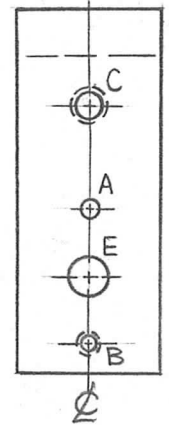
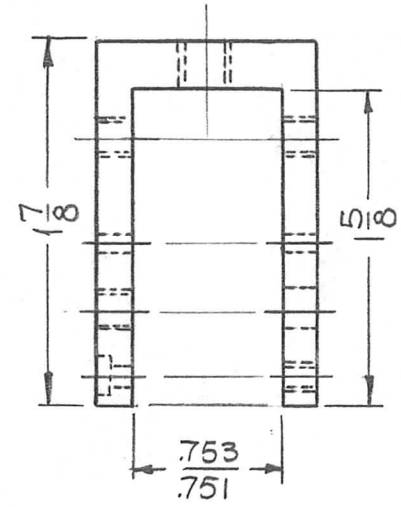
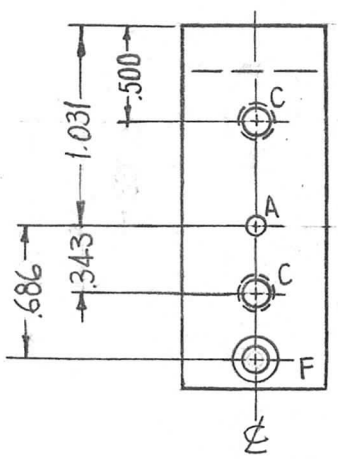


REQ. PER UNIT	USED ON			PM1216 \emptyset
	MODEL	ASS'Y. NO.	DATE	
7	TST()10K		2-13-65	



HOLES	DESCRIPTION	REQ.
A	7/64 DIA.	2
B	DRILL & TAP FOR 4-40	1
C	DRILL & TAP FOR 10-32	3
D	DRILL & TAP FOR 1/4-20	1
E	13/64 (.203) DIA.	1
F	DR. 9/64 DIA. C'BORE 1/4 DIA. X 3/32 DP.	1



DIM. SAME ON OPPOSITE SIDE

SYM	DESCRIPTION	DATE	CH. NO.	DRAFTS	CHECKER	ENG. APP.	REQ. ITEM	PART NO.	F. BUDETTI DESCRIPTION	SYMBOL		
\emptyset	ORIGINAL RELEASE FOR PRODUCTION	6/17/66	\emptyset	C.V			AS NOTED		THE TECHNICAL MATERIEL CORP. MAMARONECK, NEW YORK	U-BRKT, MTG, CONTACT		
XI	DWG. NO. WAS PM1190 (ERROR)	2/22/65		SRG			STOCK SIZE					
X	EXP. RELEASE	2-13-64	X	SRG			BRASS					
							MATERIAL					
	UNLESS OTHERWISE SPECIFIED DIMENSIONS ARE IN INCHES AND INCLUDE CHEMICALLY APPLIED OR PLATED FINISHES	SCALE	1:1					HALF HARD		SRG	6/15/66	
	DECIMALS .X \pm .05 .XX \pm .01 .XXX \pm .005	FRACTIONS \pm 1/64 ANGLES \pm 0° 30'	CODE	A								
	TOLERANCES						RHODIUM PLATE \pm .000025		00 6/16/66			PM1216
							FINISH & SPEC. NO.		ELEC. DES. APP.	MECH. DES. APP.		