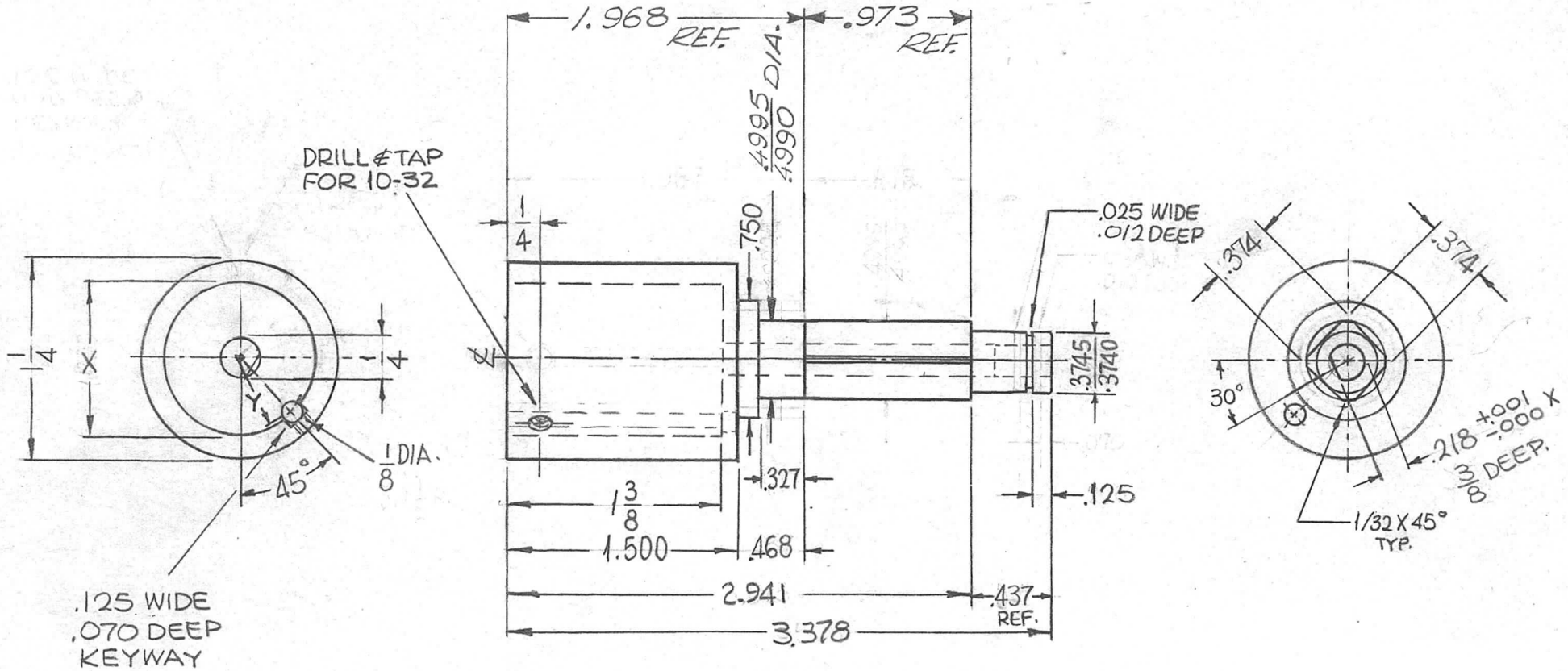


TMC P/N	X $\begin{matrix} +.002 \\ -.000 \end{matrix}$	Y RADIUS
PM1214-1	1.000	1/2
PM1214-2	.750	3/8

- B/S
- AF105

REQ. PER UNIT	USED ON		
	MODEL	ASS'Y. NO.	DATE
1 EA.	TST-10K	A4286	2-13-64
1	PALA-10K		

PM1214 A



A	.4995 DIA DIM ADD	5-27-69	19457	GE	JQ	FB	JQ
Ø	ORIGINAL RELEASE	4-21-66	Ø				
X4	3/8 DEEP ADDED TO FLAT	9-13-65	X4	SRG			
X3	PM1214-2 ADDED, 10-32 HOLE DELETED	8-12-65	X3	SRG			
X2	DIMS: 3.378, 2.941 & 1.968 WERE 3.528, 3.013 & 1.937	6-4-65	X2	Q.D.L	DA		
X1	COMPLETELY REVISED	5-17-65	X1	SRG	QB		
X	EXP. RELEASE	2-13-64	X	SRG			
SYM	DESCRIPTION	DATE	CH. NO.	DRAFTS	CHECKER	ENG. APP.	
UNLESS OTHERWISE SPECIFIED DIMENSIONS ARE IN INCHES AND INCLUDE CHEMICALLY APPLIED OR PLATED FINISHES		SCALE	1:1				
DECIMALS .X ± .05 .XX ± .01 .XXX ± .005	TOLERANCES	FRACTIONS ± 1/64 ANGLES ± 0° 30'	CODE	A			

REQ. ITEM	PART NO.	F. BUDETTI	DESCRIPTION	SYMBOL
	AS NOTED		THE TECHNICAL MATERIEL CORP. MAMARONECK, NEW YORK	
	STAINLESS STEEL		HUB, BOTTOM	
	MATERIAL			
	303	SRG	QC5 QB	
	TYPE & TEMPER	HEAT TREAT. SPEC.	DRAWN	CHECKED
	S104 PASSIVATE			
	FINISH & SPEC. NO.	ELEC. DES. APP.	MECH. DES. APP.	
				PM1214 A