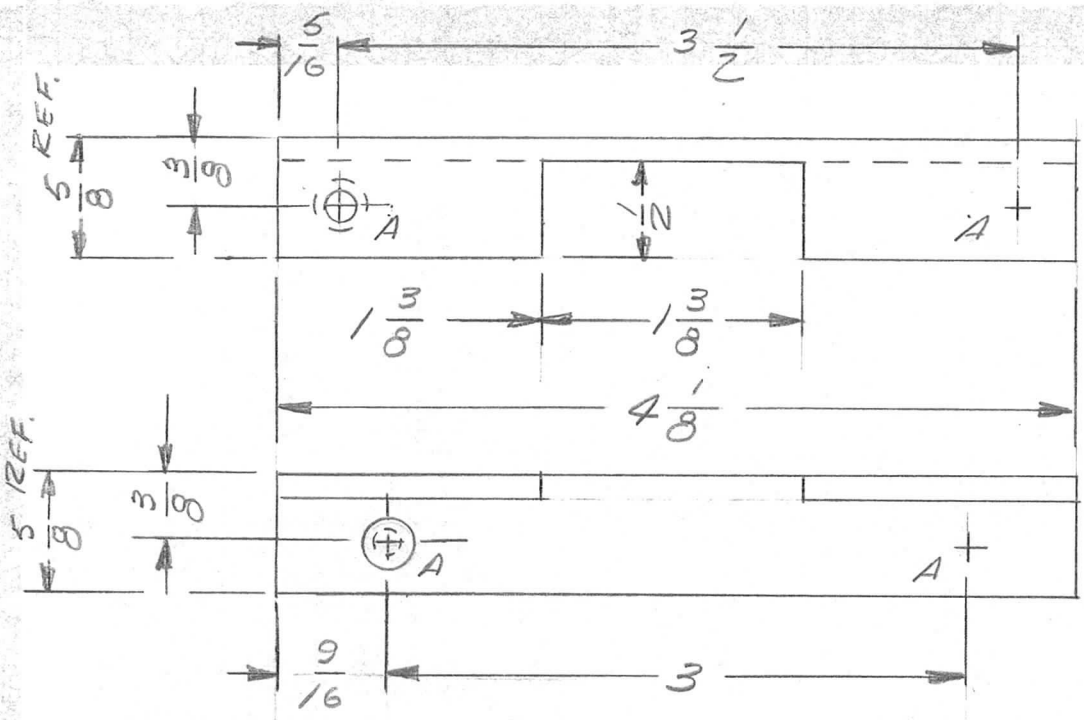
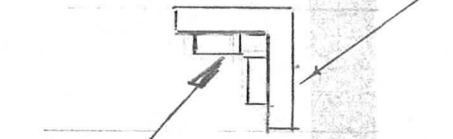


REQ. PER UNIT	USED ON			PM1127	Ø
	MODEL	ASS'Y. NO.	DATE		
2	RTIA-1	A4064	1-25-65		



METAL STAMP TMC  
 PT/NO DM1127-  
 1/8 GOTHIC W/LATEST  
 REV. LETTER ON LIP.



① MOUNT IN ALL  
 "A" HOLES  
 AFTER FINISHING

HOLE LEGEND

HOLE	DESCRIPTION	REQ'D
"A"	.221-.224 DIA.	4

4	1	NT129-832-6	NUT, PLAIN, SPLINE			A
REQ. ITEM	PART NO.		DESCRIPTION			SYMBOL
ORIGINAL RELEASE FOR PRODUCTION		2-8-65	Ø	JL.	THE TECHNICAL MATERIEL CORP. MAMARONECK, NEW YORK	
REDRAWN - NO CHANGES		1-25-65	X1	J.M.	BRACKET, SUPPORT- REAR (P.C. CARD BIN)	
SYM	DESCRIPTION	DATE	CH. NO.	DRAFTS	CHECKER	ENG. APP.
UNLESS OTHERWISE SPECIFIED DIMENSIONS ARE IN INCHES AND INCLUDE CHEMICALLY APPLIED OR PLATED FINISHES		SCALE		5052-H32		
DECIMALS .X ± .05 .XX ± .01 .XXX ± .005		FRACTIONS ± 1/64 ANGLES ± 0° 30'		TOLERANCES		CODE A
EXTRUDED ANGLE 5/8 x 5/8 x 1/8 THK STOCK SIZE		ALUMINIUM		MATERIAL		
5052-H32		#		DRAWN: [Signature] CHECKED: [Signature] FINAL APPROVAL: [Signature]		
3404 YELLOW IRIDITE		FINISH & SPEC. NO.		ELEC. DES. APP. MECH. DES. APP.		
2/8/65		W. JORDAN		2/8/65		
PM1127		Ø				