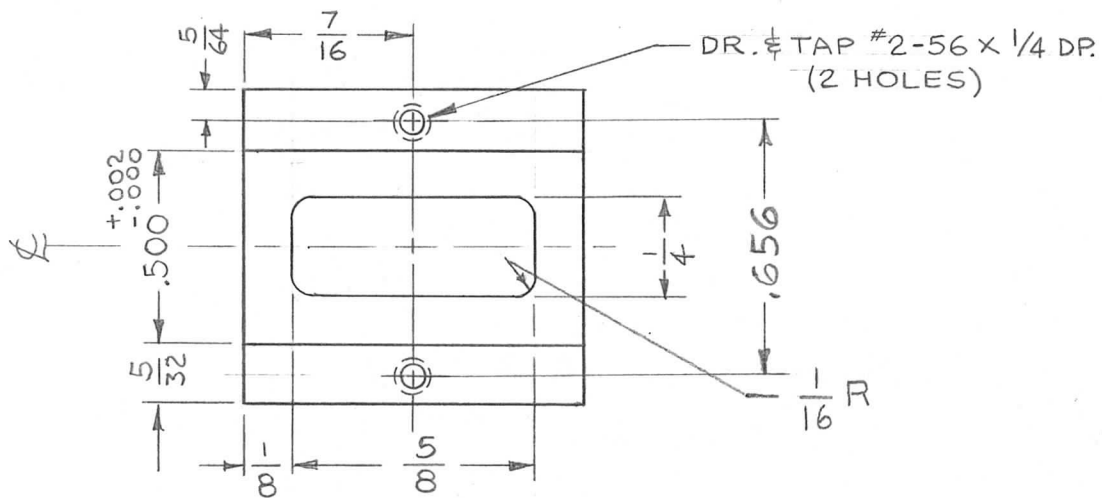
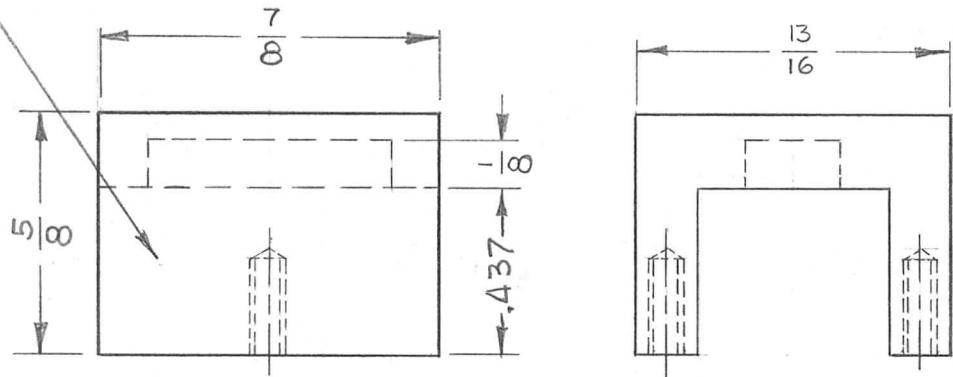


RUBBER STAMP TMC PART NO.
1/8 HIGH GOTHIC W/LATEST
REV. LETTER

REQ. PER UNIT	USED ON			PM 1106	⊗
	MODEL	ASS'Y. NO.	DATE		
1	VLRB-1		7/1/64		



REQ. ITEM	PART NO.	T. KRUY	DESCRIPTION	SYMBOL									
⊗	ORIGINAL RELEASE FOR PRODUCTION	4.9.65	⊗	⊗									
X1	DIM. .437 WAS 7/16 & RUBBER STAMP WAS METAL STAMP	12-2-64	6 D.L.										
X	EXPER. RELEASE	7/1/64	WJB										
SYM	DESCRIPTION	DATE	CH. NO.	DRAFTS	CHECKER	ENG. APP.	MATERIAL	TYPE & TEMPER	HEAT TREAT. SPEC.	DRAWN	CHECKED	FINAL APPROVAL	
	UNLESS OTHERWISE SPECIFIED DIMENSIONS ARE IN INCHES AND INCLUDE CHEMICALLY APPLIED OR PLATED FINISHES	SCALE	2:1					BRASS	1/2 HARD		WJB 7.1.64	@	⊗
DECIMALS	FRACTIONS	CODE	A					NICKEL PLATED					
.X ± .05	± 1/64							FINISH & SPEC. NO.					
.XX ± .01	ANGLES												
.XXX ± .005	± 0° 30'												
	TOLERANCES												PM 1106
													⊗