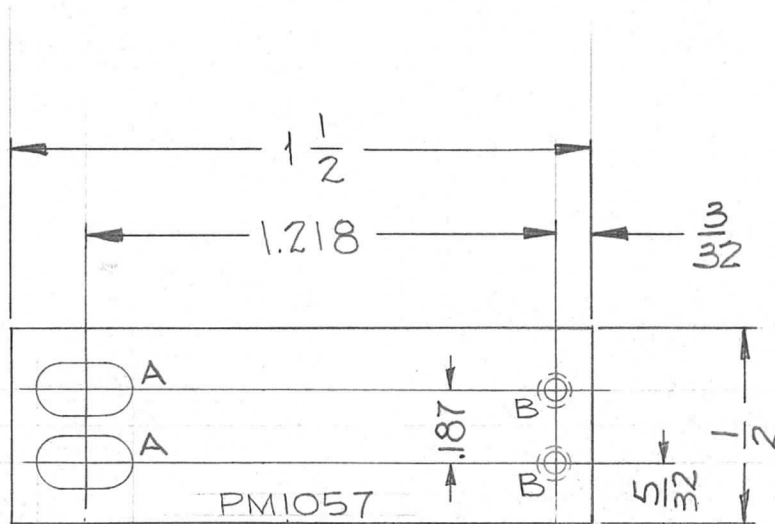


REQ. PER UNIT	USED ON			PM 1057	A
	MODEL	ASS'Y. NO.	DATE		
1	HFKR-2	A3625	4-8-64		



INK STAMP TMC PART NO. 1/8
HIGH GOTHIC WITH LATEST REV. LETTER

NOTE:
REMOVE ALL BURRS & SHARP EDGES

HOLE LEGEND		
HOLE	DESCRIPTION	REQ'D
A	1/4 X 1/8 SLOT	2
B	DR#TAP#256THRU	2

SYM	DESCRIPTION	DATE	CH. NO.	DRAFTS	CHECKER	ENG. APP.	REQ. ITEM	PART NO.	T. KRUY	DESCRIPTION	SYMBOL		
A	"INK STAMP WAS METAL"	11-7-66	17217	WHO	QC/S			.051 THK		THE TECHNICAL MATERIEL CORP. MAMARONECK, NEW YORK	A		
Ø	ORIGINAL RELEASE FOR PRODUCTION	9-14-64	Ø	EL				STOCK SIZE					
X	EXP. RELEASE	4-8-64	#	LD				BRASS				PLATE, SWITCH	
UNLESS OTHERWISE SPECIFIED DIMENSIONS ARE IN INCHES AND INCLUDE CHEMICALLY APPLIED OR PLATED FINISHES		SCALE		NONE			MATERIAL		HALF HARD	#	Drawn	@	KAC
DECIMALS .X ± .05 .XX ± .01 .XXX ± .005		FRACTIONS ± 1/64 ANGLES ± 0° 30'		TOLERANCES		CODE	TYPE & TEMPER		HEAT TREAT. SPEC.	DRAWN	CHECKED	FINAL APPROVAL	
						A	S135 NICKEL PLATE			T. Kruy		PM 1057	
							FINISH & SPEC. NO.		ELEC. DES. APP.	MECH. DES. APP.			