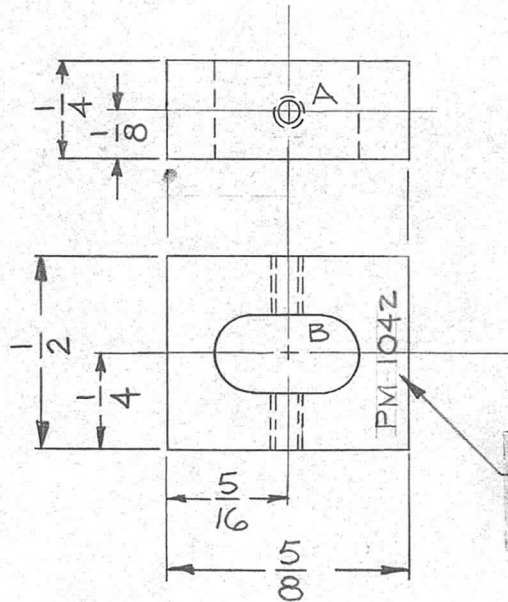


PRELIMINARY DRAWING

REQ. PER UNIT	USED ON		
	MODEL	ASS'Y. NO.	DATE
1	HFR-2A	A3624	3/6/64
1	HFRR-2	A3625	9-11-64

PM 1042 \emptyset

Not For Production



HOLE LEGEND		
HOLE	DESCRIPTION	REQD
A	DR # TAP # 2-56 THRU	1
B	3/16 X 3/8 SLOT THRU	1

METAL STAMP TMC PART NO. 1/8 NO.
HIGH GOTHIC WITH LATEST
REV LETTER

WITH LATEST REV LETTER

NOTE:
REMOVE ALL BURRS & SHARP EDGES

SYM	DESCRIPTION	DATE	CH. NO.	DRAFTS	CHECKER	ENG. APP.	REQ. ITEM	PART NO.	T. KRUY	DESCRIPTION	SYMBOL	
\emptyset	ORIGINAL RELEASE FOR PRODUCTION	9-11-64		PL						THE TECHNICAL MATERIEL CORP. MAMARONECK. NEW YORK	\emptyset	
X ₁	TITLE WAS SPACER (SLIDE YOKE)	9-10-64		PL				—	STOCK SIZE			
X	EXP. RELEASE	3/6/64	—	LD				1/2	BRASS			
										SPACER, GUIDE, BOT (SLIDE YOKE)		
	UNLESS OTHERWISE SPECIFIED DIMENSIONS ARE IN INCHES AND INCLUDE CHEMICALLY APPLIED OR PLATED FINISHES	SCALE	2:1					HALF HARD	—	Drawn	@	PL
	DECIMALS .X \pm .05 .XX \pm .01 .XXX \pm .005	FRACTIONS \pm 1/64 ANGLES \pm 0° 30'	CODE	A				TYPE & TEMPER	HEAT TREAT. SPEC.	DRAWN	CHECKED	FINAL APPROVAL
	TOLERANCES							5135 NICKLE PLATE		T. Kruy	PM 1042	\emptyset
								FINISH & SPEC. NO.		ELEC. DES. APP.	MECH. DES. APP.	