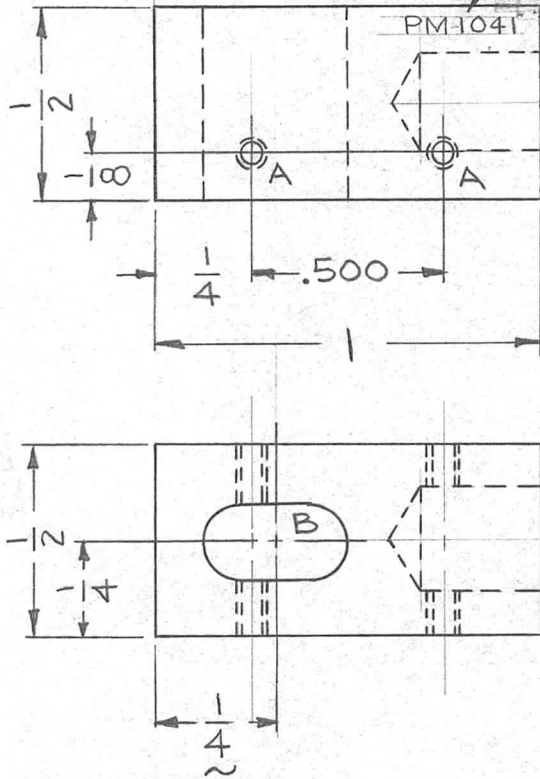


PRELIMINARY DRAWING

REQ. PER UNIT	USED ON		
	MODEL	ASS'Y. NO.	DATE
1	HFR-2A	A3624	3-6-64
1	HFRR-2	A3625	9-11-64

PM 1041 \emptyset

METAL STAMP TMC PART NO. 1/8 NO.
HIGH GOTHIC WITH LATEST
REV. LETTER



HOLE LEGEND		
HOLE	DESCRIPTION	REQD
A	DR# TAP# 2-56	2
B	3/16 X 3/8 SLOT THRU	1
C	17/64 X 5/16 DEEP	1

NOTE:
REMOVE ALL BURRS &
SHARP EDGES.

SYM	DESCRIPTION	DATE	CH. NO.	DRAFTS	CHECKER	ENG. APP.	REQ. ITEM	PART NO.	T. KRUY	DESCRIPTION	SYMBOL		
\emptyset	ORIGINAL RELEASE FOR PRODUCTION	9-11-64	\emptyset	9.R.						THE TECHNICAL MATERIEL CORP. MAMARONECK, NEW YORK	\emptyset		
X ₁	TITLE WAS SPACER (SLIDE YOKE)	9-10-64		9.R.				— # —					
X	EXP. RELEASE	3/6/64		9.R.				1/2" BRASS	SPACER, GUIDE, TOP (SLIDE YOKE)				
UNLESS OTHERWISE SPECIFIED DIMENSIONS ARE IN INCHES AND INCLUDE CHEMICALLY APPLIED OR PLATED FINISHES		SCALE		2:1			HALF HARD		— # —	HKRUY	@	RTK	
DECIMALS .X ± .05 .XX ± .01 .XXX ± .005	TOLERANCES	FRACTIONS ± 1/64 ANGLES ± 0° 30'	CODE	A			S135 NICKLE PLATE				T. Kruy	PM 1041	\emptyset
							FINISH & SPEC. NO.		ELEC. DES. APP.	MECH. DES. APP.			