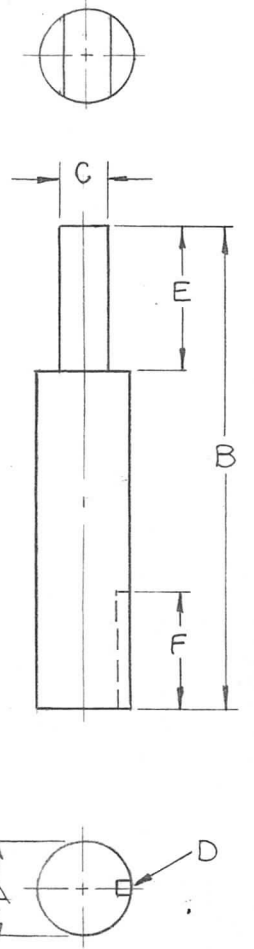


TMC NO.	A	B	C	D	E	F	REQ. PER UNIT	USED ON		
								MODEL	ASS'Y. NO.	DATE
PM-1002-1	.250 $\begin{smallmatrix} +.000 \\ -.002 \end{smallmatrix}$	3	.190 $\begin{smallmatrix} +.000 \\ -.002 \end{smallmatrix}$	1/16 x .070 DP.	.437	3/4	1	GPT-200K	AX-395	10-14-63
PM-1002-2	.250 $\begin{smallmatrix} +.000 \\ -.002 \end{smallmatrix}$	4-3/4	.190 $\begin{smallmatrix} +.000 \\ -.002 \end{smallmatrix}$	1/16 x .070 DP.	.437	3/4	1	GPT-200K	AX-395	10-14-63

PM-1002  $\emptyset$



REQ.	ITEM	PART NO.	F. BUDETTI	DESCRIPTION	SYMBOL							
				THE TECHNICAL MATERIEL CORP. MAMARONECK, NEW YORK								
		STAINLESS STEEL		SHAFT, ROUND								
0	ORIGINAL RELEASE	5.16.64	WB									
SYM	DESCRIPTION	DATE	CH. NO.	DRAFTS	CHECKER	ENG. APP.	MATERIAL					
UNLESS OTHERWISE SPECIFIED DIMENSIONS ARE IN INCHES AND INCLUDE CHEMICALLY APPLIED OR PLATED FINISHES		SCALE		303		—		SRG	qa	RTC		
DECIMALS .X ± .05 .XX ± .01 .XXX ± .005		FRACTIONS ± 1/64 ANGLES ± 0° 30'		TOLERANCES		CODE		TYPE & TEMPER	HEAT TREAT. SPEC.	DRAWN	CHECKED	FINAL APPROVAL
												PM-1002 $\emptyset$
								FINISH & SPEC. NO.	ELEC. DES. APP.	MECH. DES. APP.		