

| APPLICATION |               |           | REVISIONS |                       |         |          |       |      |      |
|-------------|---------------|-----------|-----------|-----------------------|---------|----------|-------|------|------|
| QTY         | MODEL USED ON | ASS'Y NO. | LTR       | DESCRIPTION           | DATE    | E.M.N.NO | DRAFT | CHKD | APPD |
|             | SPT3K/VHF     | AX8080    | Ø         | ORIG RELEASE FOR PROD | 4/16/69 | —        | CV    |      |      |
|             | SPT3K/VHF     | AX8081    |           |                       |         |          |       |      |      |
|             | SPT3K/VHF     | AX8089    |           |                       |         |          |       |      |      |
|             | SPT3K/VHF     | AX8090    |           |                       |         |          |       |      |      |

MFR (TMC CODE NO.): S401-494

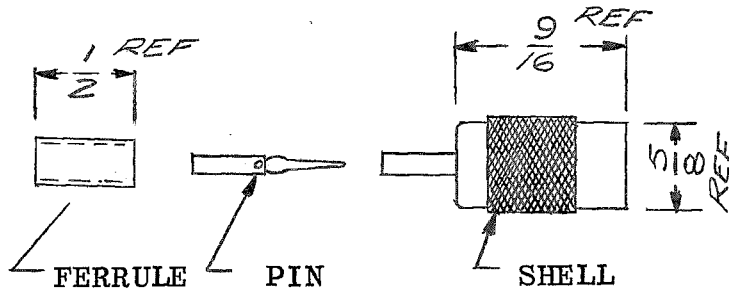
MFR CATALOG NO: KA5944

**SPECIFICATIONS:**

OPERATING VOLTAGE: 500 RMS  
 OPERATING TEMPERATURE: -65°C TO +200°C  
 IMPEDANCE: 50Ω NOMINAL

**MATERIAL & FINISH**

SHELL: BRASS, SILVER PLATED  
 CONTACTS: BERYLLIUM  
 DIELECTRIC: TEFLON  
 GASKET: SILICONE RUBBER



| UNLESS OTHERWISE SPECIFIED DIMENSIONS ARE IN INCHES AND INCLUDE CHEMICALLY APPLIED OR PLATED FINISHES   |  | REQ'D                             | ITEM | PART NUMBER     | DESCRIPTION   | SYM.                            |                           |                   |
|---|--|-----------------------------------|------|-----------------|---|---------------------------------|---------------------------|-------------------|
| <b>LIST OF MATERIAL</b>   |  |                                   |      |                 |   |                                 |                           |                   |
| DECIMALS<br>.X ± .05<br>.XX ± .01<br>.XXX ± .005  | FRACTIONS<br>1/64<br>ANGLES<br>0° .30' | FINAL APPROVAL <i>[Signature]</i> |      | DATE<br>4/17/69 | <b>THE TECHNICAL MATERIEL CORP.</b><br>MAMARONECK, NEW YORK<br><br><b>CONNECTOR, PLUG</b> |                                 |                           |                   |
| MATERIAL  |  | MECH. DES. <i>[Signature]</i>     |      | DATE<br>4/21/69 |   |                                 |                           |                   |
| FINISH  |  | ELECT. DES.                       |      | DATE            |   |                                 |                           |                   |
|   |  | CHECKED <i>[Signature]</i>        |      | DATE<br>4/21/69 |   |                                 |                           |                   |
|   |  | DRAWN <i>G EVANGELIST</i>         |      | DATE<br>4/15/69 |   |                                 |                           |                   |
| NOTICE TO PERSONS RECEIVING THIS DRAWING<br>THE TECHNICAL MATERIEL CORPORATION claims proprietary right in the material disclosed hereon. This drawing is issued in confidence for engineering information only and may not be reproduced or used to manufacture anything shown hereon without permission from THE TECHNICAL MATERIEL CORPORATION to the user. This drawing is loaned for mutual assistance and is subject to recall at any time. |  |                                   |      |                 | SIZE<br><b>A</b>  | CODE IDENT. NO.<br><b>82679</b> | DWG NO.<br><b>PL 8012</b> | ISSUE<br><b>Ø</b> |
| SCALE   |  |                                   |      | SHEET           |   | OF                              |                           |                   |