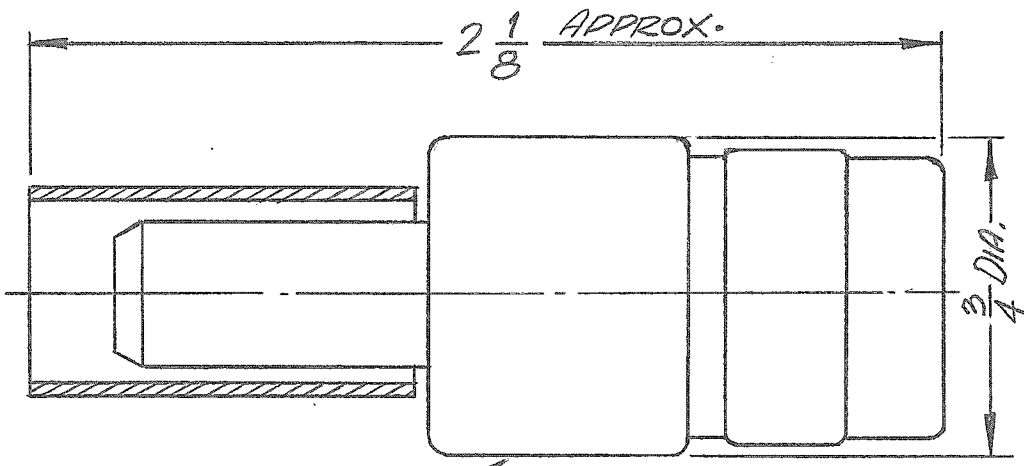
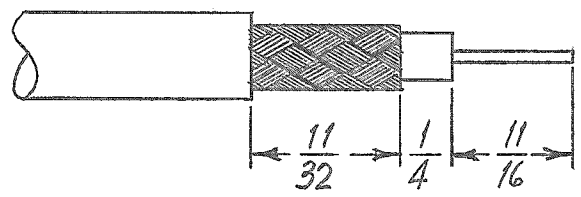


REQ. PER UNIT	USED ON			PL 201	Ø
	MODEL	ASS'Y. NO.	DATE		



STAMP TMC P/N PL201

CABLE STRIP DIMENSIONS



REF: TOOL (S401-35 #WT203)

SPECIFICATIONS

SERIES: "C"

NO. OF CONTACTS: ONE (1)

TYPE OF CONTACT: MALE

DIELECTRIC: TEFLON

ELECTRICAL DATA:

MAX. PEAK OPR. VOLT: 1,500 VOLTS

FREQ. LIMIT: 10,000 MHz

NOMINAL IMPEDANCE: 50 OHM

CABLE ACCOMODATIONS:

TYPE: RG-216/U

MATERIAL:

EXTERNAL PARTS: BRASS

CONTACTS: BERYLLIUM COPPER

GASKET: NONE

FINISH:

EXTERNAL PARTS: SILVER PLATE & RHODIUM FLASH

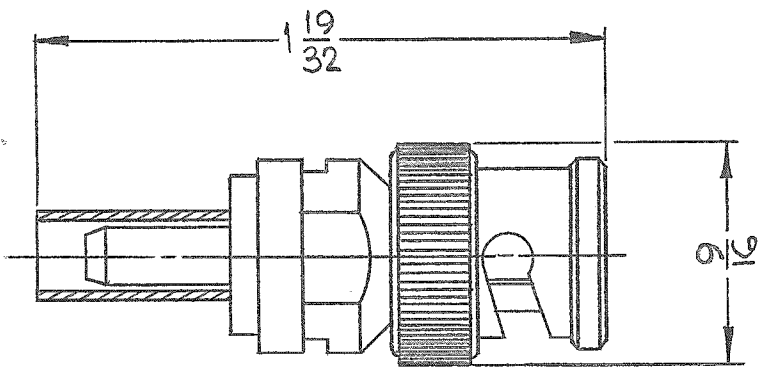
CONTACTS: SILVER PLATE & GOLD FLASH

MATING CONNECTOR:

NOTE: CRIMP CLAMP TYPE

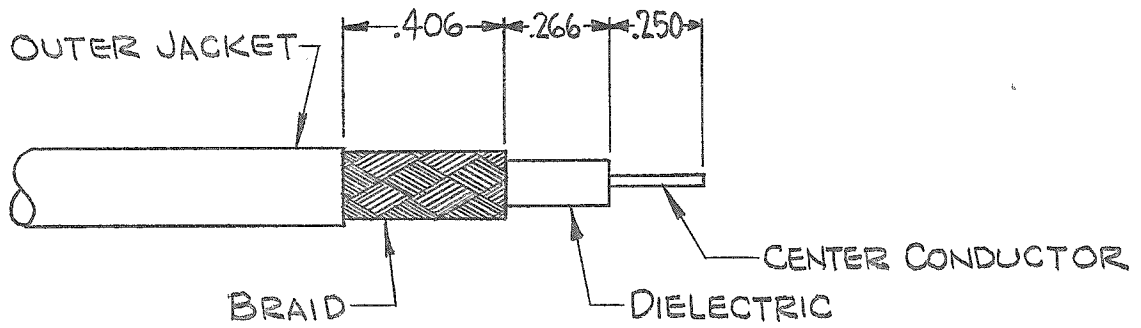
REQ. ITEM	PART NO.	MARTINENGO DESCRIPTION	SYMBOL
Ø	ORIG. RELEASE FOR PROD. 9.21.67	Ø RG.	Ø
X2	S401-35 ADDED, UPDATED MFG.	ENJ	
X1	"TOOL THOMAS & BETTS # WT-203" 2.2067	WHD	
SYM	DESCRIPTION	DATE	CH. NO. DRAFTS CHECKER ENG. APP.
UNLESS OTHERWISE SPECIFIED DIMENSIONS ARE IN INCHES AND INCLUDE CHEMICALLY APPLIED OR PLATED FINISHES		SCALE	
DECIMALS .X ± .05 .XX ± .01 .XXX ± .005	TOLERANCES	FRACTIONS ± 1/64 ANGLES ± 0° 30'	CODE C
		S401-70(2275)	
SEE SPECS.		SEE SPECS.	
MATERIAL		H. AUSTIN 3.23.66	
TYPE & TEMPER	HEAT TREAT. SPEC.	DRAWN	CHECKED
FINISH & SPEC. NO.		ELEC. DES. APP.	MECH. DES. APP.
		PL 201 Ø	

REQ. PER UNIT	USED ON			PL 202	Ø
	MODEL	ASS'Y. NO.	DATE		



STAMP TMC PT. NO. "PL202-"

CABLE CUTTING DIMENSIONS



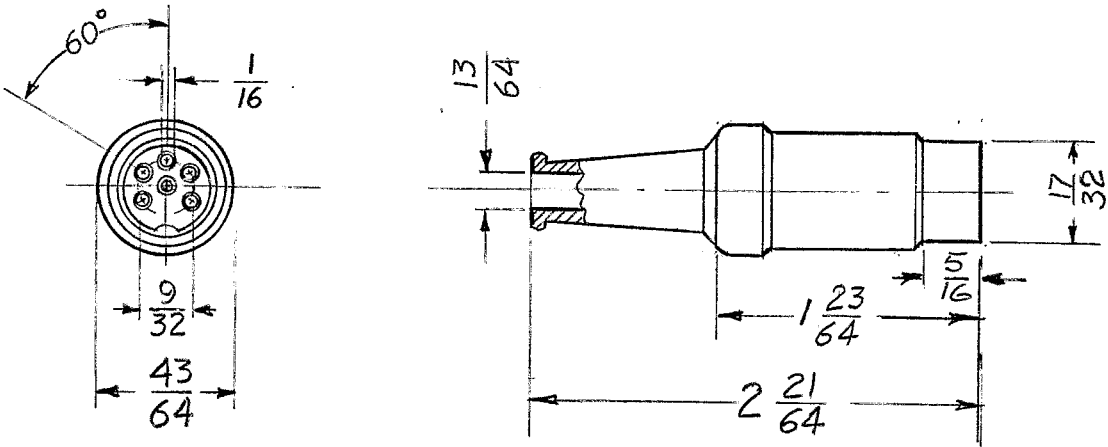
SPECIFICATIONS

SERIES: BNC  
 NO. OF CONTACTS: ONE (1)  
 TYPE OF CONTACT: MALE  
 DIELECTRIC: TEFLON  
ELECTRICAL DATA:  
 MAX. PEAK OPR. VOLTS: 500V  
 FREQ. LIMIT: 10,000 MHZ  
 NOMINAL IMPEDANCE: 50 OHMS  
CABLE ACCOMODATIONS:

TYPES: RG 122, 180A & 195/U  
MATERIAL:  
 EXTERNAL PARTS: BRASS  
 CONTACT: BERYLLIUM COPPER  
 GASKET: SILICONE RUBBER  
FINISH:  
 EXTERNAL PARTS: SILVER PLATE & RHODIUM FLASH  
 CONTACT: SILVER PLATE & GOLD FLASH  
MATING CONNECTOR: UG 625/U  
 NOTE: CRIMP CLAMP TYPE  
 REF: TOOL (S401-35 \*WT 203)

REQ. ITEM	PART NO.	MARTINENGO	DESCRIPTION	SYMBOL						
Ø	ORIG. RELEASE FOR PROD. 9-21-67	Ø	R.G.	<i>FAO</i>						
X2	ELECT & FINISH DATA: UPDATED 9-20-67	Ø	ENU	<i>APV</i>						
X1	"TOOL THOMAS & BETTS # WT-203" ADDED. 2.20.67	Ø	W40							
SYM	DESCRIPTION	DATE	CH. NO.	DRAFTS	CHECKER	ENG. APP.				
UNLESS OTHERWISE SPECIFIED DIMENSIONS ARE IN INCHES AND INCLUDE CHEMICALLY APPLIED OR PLATED FINISHES							SCALE	<i>1/1</i>		
DECIMALS .X ± .05 .XX ± .01 .XXX ± .005		TOLERANCES		FRACTIONS ± 1/64 ANGLES ± 0° 30'		CODE C	S 401 70 (2276)	SEE SPECS.		
TYPE & TEMPER		HEAT TREAT. SPEC.		DRAWN		CHECKED		FINAL APPROVAL		
SEE SPECS.		SEE SPECS.		3-22-66 H. AUSTIN		<i>APV</i>		<i>SN</i>		
FINISH & SPEC. NO.		ELEC. DES. APP.		MECH. DES. APP.		PL 202		Ø		

REQ. PER. UNIT	USED ON			PL-208
	MODEL	ASS'Y. NO.	DATE	
1	GPE-1		6-30-61	



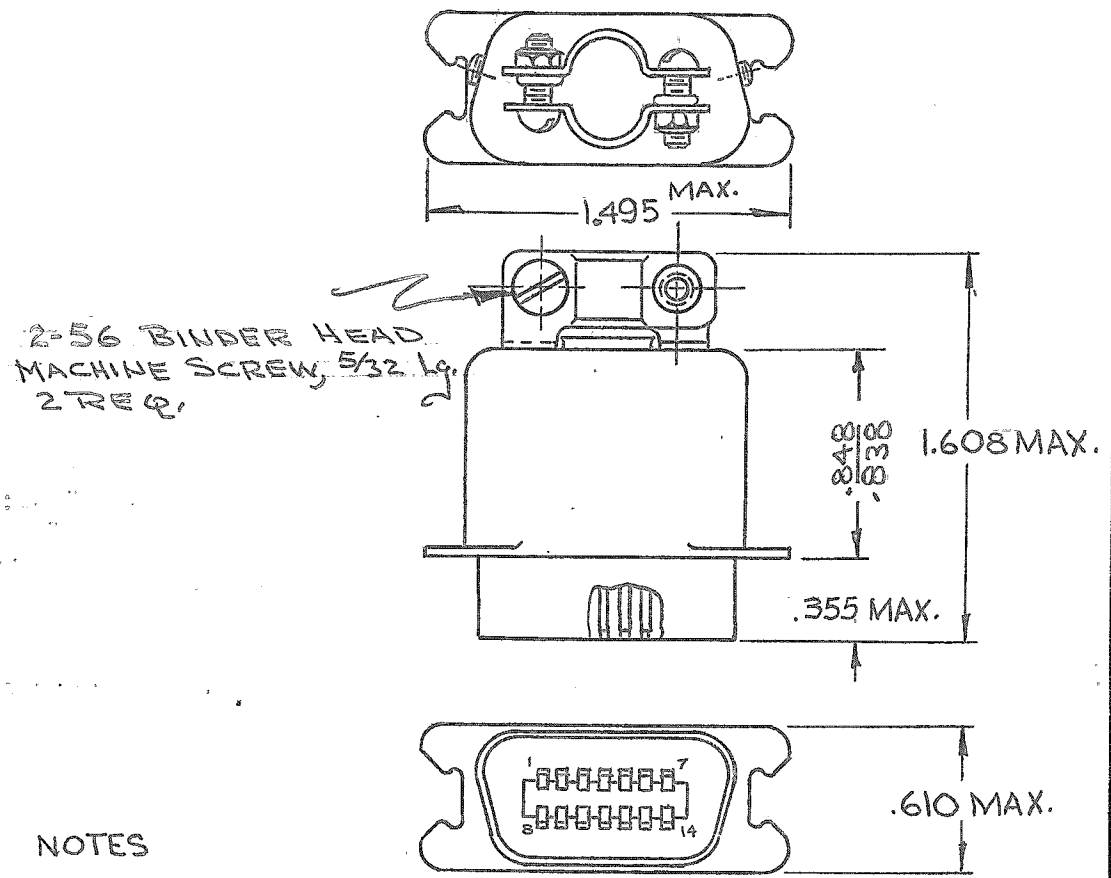
REF. ~ HIRSCHMAN # MAS-6

								REQ.	ITEM	PART NO.	DESCRIPTION		SYMBOL
										THE TECHNICAL MATERIEL CORP.			
										MAMARONECK, NEW YORK			
										STEEL		PLUG, CONNECTOR	
										MATERIAL			
ISSUE	ITEM	CHANGED FROM	DATE	CH. NO.	DRAFTS	CHECKER	ENG. APP.			<i>G. De Luca</i>	<i>H. De Luca</i>	<i>[Signature]</i>	
TOLERANCES			SCALE:							DRAWN	CHECKED	FINAL APPROVAL	
DEC. DIM. ±			MAXIMUM ALLOWABLE TOLERANCES HAVE BEEN DETERMINED AND ANY DEVIATIONS WILL BE CAUSE FOR REJECTION. REMOVE ALL BURRS AND SHARP EDGES					TYPE & TEMPER		HEATTREAT. SPEC.		ELEC. DES. APP	
FRAC. DIM. ±								NICKEL PLATE					
ANGULAR DIM. ±								FINISH & SPEC. NO.		MECH. DES. APP		PL-208	

TMC NO.	MFR. NO.	# OF CONTACTS	MAX. CABLE
PL-213-14	57-30140	14	.422 DIA.

REQ. PER UNIT	USED ON		PL-213
	MODEL	ASS'Y. NO.	
	DVC-1		

**CONTACT DATA:**  
 TYPE: MALE  
 STYLE: RIBBON  
 CURRENT RATING: 5A  
 DCWV: 700V  
 MATERIAL: SILVER  
 FINISH: GOLD PLATE  
 MAXIMUM WIRE SIZE: #20 (AWG)  
 DIELECTRIC MATERIAL: DIALLYL PHTHALATE  
**SHELL DATA:**  
 TYPE: ENCLOSING  
 MATERIAL: BRASS  
 FINISH: CADMIUM PLATED



**NOTES**  
 1. TO BE USED ONLY IN CONJUNCTION WITH "TELE-SIG" EQUIP.  
 2. MATES WITH JJ-248

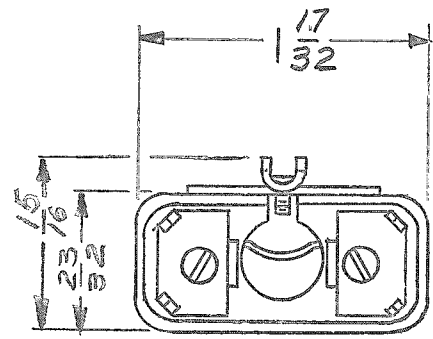
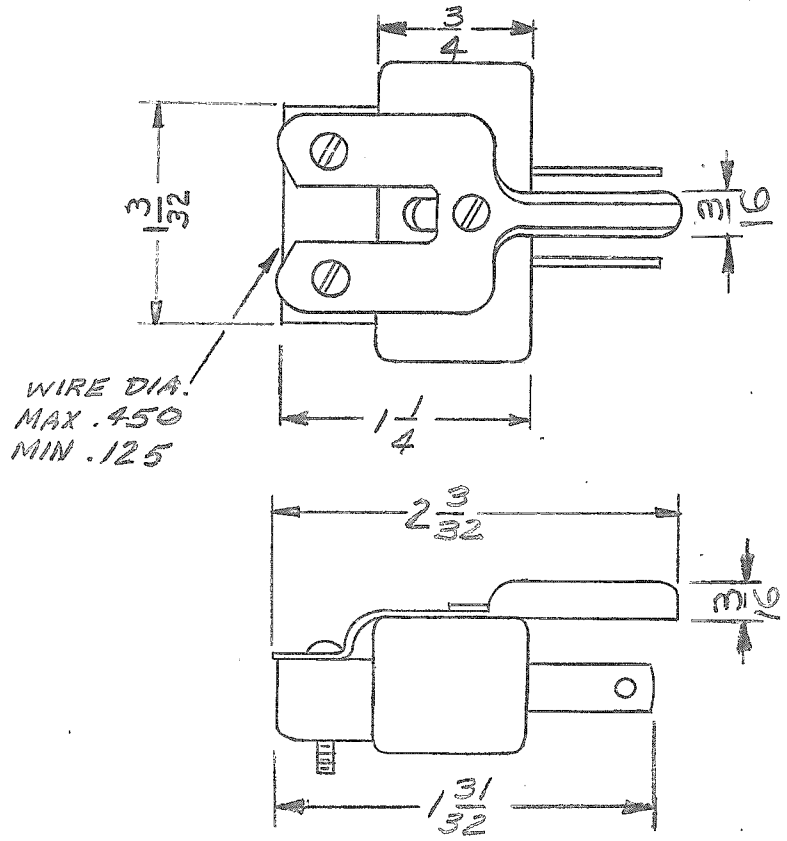
REQ. ITEM	PART NO.	I. JOHNSON DESCRIPTION		SYMBOL
		THE TECHNICAL MATERIEL CORP. MAMARONECK, NEW YORK		
	STOCK SIZE	CONNECTOR, PLUG, ELECTRICAL		
		W/HOOD		
SYM	DESCRIPTION	DATE	CH. NO.	DRAFTS
	UNLESS OTHERWISE SPECIFIED DIMENSIONS ARE IN INCHES AND INCLUDE CHEMICALLY APPLIED OR PLATED FINISHES	SCALE	S401-71	CHECKER
				ENG. APP.
DECIMALS	TOLERANCES	FRACTIONS	CODE	TYPE & TEMPER
.X ± .05		± 1/64		HEAT TREAT. SPEC.
.XX ± .01		ANGLES		FINISH & SPEC. NO.
.XXX ± .005		± 0° 30'		
				ELEC. DES. APP.
				MECH. DES. APP.
				PL-213

THE CONTENTS OF THIS DRAWING ARE THE EXCLUSIVE PROPERTY OF THE TECHNICAL MATERIEL CORP. ITS UNAUTHORIZED USE OR REPRODUCTION IN WHOLE OR IN PART IS STRICTLY FORBIDDEN.

REQ. PER UNIT	USED ON		
	MODEL	ASS'Y. NO.	DATE
1	GPT 10K		12-1-61

PL-218

B



3 PRONG POLARIZED PLUG WITH REMOVABLE GROUND CONNECTION.

REF. MIL C3767/4

REQ.	ITEM	PART NO.	DESCRIPTION			SYMBOL
			THE TECHNICAL MATERIEL CORP. MAMARONECK, NEW YORK			
B			COMPLETELY REDIMENSIONED MIL REF. ADDED.			
A			DRAWING WAS PL-172			CONNECTOR, PLUG, 3 PRONG, AC
SYM	DESCRIPTION	DATE	CH. NO.	DRAFTS	CHECKER	ENG. APP.
UNLESS OTHERWISE SPECIFIED: DIMENSIONS ARE IN INCHES TOLERANCES ON FRAC. ± 1/64 DEC. ± .005 ANGLES ± 1/2°		SCALE: S401-413 (UP-121-M)				
MAXIMUM ALLOWABLE TOLERANCES HAVE BEEN DETERMINED AND ANY DEVIATIONS WILL BE CAUSE FOR REJECTION. REMOVE ALL BURRS AND SHARP EDGES				TYPE & TEMPER	HEAT TREAT. SPEC.	DRAWN
						CHECKED
				FINISH & SPEC. NO.	ELEC. DES. APP.	MECH. DES. APP.
						FINAL APPROVAL
						PL-218
						B

THE CONTENTS OF THIS DRAWING ARE THE EXCLUSIVE PROPERTY OF THE TECHNICAL MATERIEL CORP. ITS UNAUTHORIZED USE OR REPRODUCTION IN WHOLE OR IN PART IS STRICTLY FORBIDDEN.

REQ. PER UNIT

USED ON

MODEL

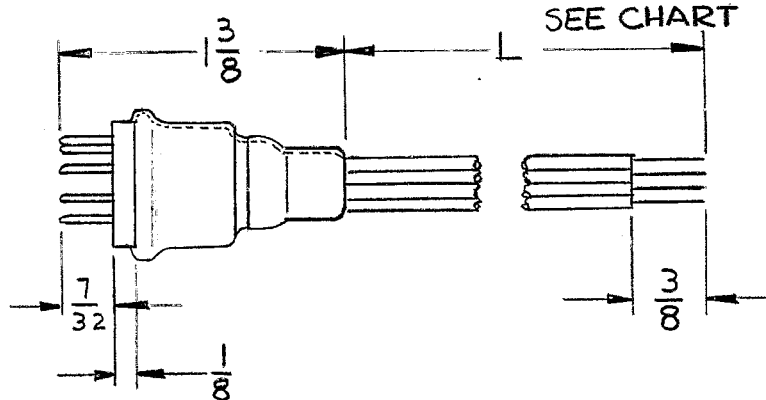
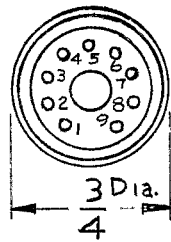
ASS'Y. NO.

DATE

PL-219

A

TMC PART NO.	MFG. CAT. NO.	NUMBER OF LEADS	CONNECT WIRE COLOR SHOWN TO PIN NO.									WIRE LENGTH "L"
			Pin 1	Pin 2	Pin 3	Pin 4	Pin 5	Pin 6	Pin 7	Pin 8	Pin 9	
PL-219-1	909	NONE	NC	NC	NC	NC	NC	NC	NC	NC	NC	0"
PL-219-2	909C	8	Black	Yellow	Green	White	Red	Orange	Brown	Grey	NC	5"
PL-219-3												
PL-219-4												
PL-219-5												



NC = No Connection  
 All Leads will be Std. 22 Ga. Stranded Insulated Wire (Mil Type MWC22(7)U\_\_  
 Free End will be Stripped & Tinned  $\frac{3}{16}$ "

REQ.	ITEM	PART NO.	DESCRIPTION				SYMBOL	
			THE TECHNICAL MATERIEL CORP. MAMARONECK, NEW YORK					
			PLUG, 9 PIN MINIATURE CONNECTOR					
A	DRAWING WAS PL-184	11-30-61	5955	GG	<del>SK</del>	<del>WMC</del>		
SYM	DESCRIPTION	DATE	CH. NO.	DRAFTS	CHECKER	ENG. APP.		
UNLESS OTHERWISE SPECIFIED: DIMENSIONS ARE IN INCHES TOLERANCES ON FRAC. ± 1/64 DEC. ± .005 ANGLES ± 1/2°		SCALE: S401-163		MAXIMUM ALLOWABLE TOLERANCES HAVE BEEN DETERMINED AND ANY DEVIATIONS WILL BE CAUSE FOR REJECTION. REMOVE ALL BURRS AND SHARP EDGES				
				TYPE & TEMPER		HEAT TREAT. SPEC.	DRAWN	
							CHECKED	
				FINISH & SPEC. NO.		ELEC. DES. APP.	MECH. DES. APP.	
							FINAL APPROVAL	
							PL-219	
							A	

THE CONTENTS OF THIS DRAWING ARE THE EXCLUSIVE PROPERTY OF THE TECHNICAL MATERIEL CORP. ITS UNAUTHORIZED USE OR REPRODUCTION IN WHOLE OR IN PART IS STRICTLY FORBIDDEN.

REQ. PER UNIT

USED ON

MODEL

ASS'Y. NO.

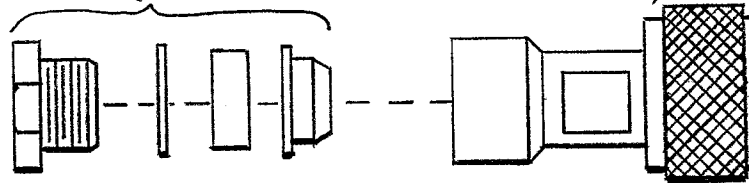
DATE

3-23-62

PL-222

SLEEVE TYPE  
INSERTS

BODY TYPE  
UG-59 /



SPECIFICATIONS

SERIES ~ "HN"

NO OF CONTACTS ~ ONE

TYPE OF CONTACT ~ MALE

DIELECTRIC ~ TEFLON

ELECTRICAL DATA

MAX. PEAK OPER. VOLT ~ 5,000V

NOM. IMPEDANCE ~ 50Ω

CABLE ACCOMODATIONS

TYPE ~ RG-165/U

MAX. O.D ~ .410"

MATERIAL

EXTERNAL PARTS ~ BRASS

CONTACT ~ BRASS

INSULATION ~ TEFLON

FINISH

EXT. PARTS ~ SILVER PLATE

CONTACT ~ SILVER PLATE

REQ.	ITEM	PART NO.	DESCRIPTION				SYMBOL
			THE TECHNICAL MATERIEL CORP. MAMARONECK, NEW YORK				
			STOCK SIZE				
			MATERIAL				
			CONNECTOR, PLUG, RF FOR - RG-165/U				
SYM	DESCRIPTION	DATE	CH. NO.	DRAFTS	CHECKER	ENG. APP.	
UNLESS OTHERWISE SPECIFIED:		SCALE: S401-70-(2478)					
DIMENSIONS ARE IN INCHES		MAXIMUM ALLOWABLE TOLERANCES HAVE BEEN DETERMINED AND ANY DEVIATIONS WILL BE CAUSE FOR REJECTION.					
TOLERANCES ON		REMOVE ALL BURRS AND SHARP EDGES					
FRAC. ± 1/64 DEC. ± .005 ANGLES ± 1/2°							
		TYPE & TEMPER		HEAT TREAT. SPEC.		DRAWN	CHECKED
		FINISH & SPEC. NO.		ELEC. DES. APP.		MECH. DES. APP.	
						PL-222	

THE CONTENTS OF THIS DRAWING ARE THE EXCLUSIVE PROPERTY OF THE TECHNICAL MATERIEL CORP. ITS UNAUTHORIZED USE FOR REPRODUCTION IN WHOLE OR IN PART IS STRICTLY FORBIDDEN.

REQ. PER UNIT

USED ON

MODEL

ASS'Y. NO.

DATE

1-17-63

PL-223

A

**SPECIFICATIONS:**

Series - QDM  
 No. of Contacts - ONE  
 Type of Contact - MALE  
 Dielectric - TEFLON

**ELECTRICAL DATA:**

Max. Peak Opr. Volt - 500 VOLTS  
 Freq. Limit - 10,000 MCS  
 Nominal Impedance - 50 OHMS

**CABLE ACCOMMODATIONS:**

Type - RG-59/U, RG-62/U

**MATING ACCOMMODATIONS:**

Type - QDM

**MATERIAL:**

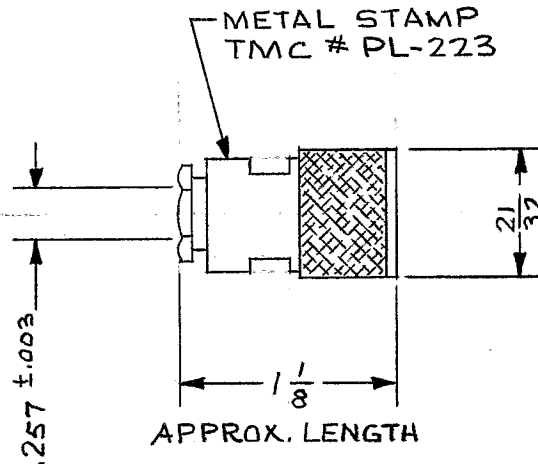
External Parts - BRASS  
 Contact - BERYLLIUM COPPER  
 Gasket - SILICONE RUBBER

**FINISH:**

External Parts - SILVER PLATE,  
 RHODIUM FINISH  
 Contact - SILVER PLATE,  
 GOLD FLASH

**PANEL:**

Max. Thickness - NONE

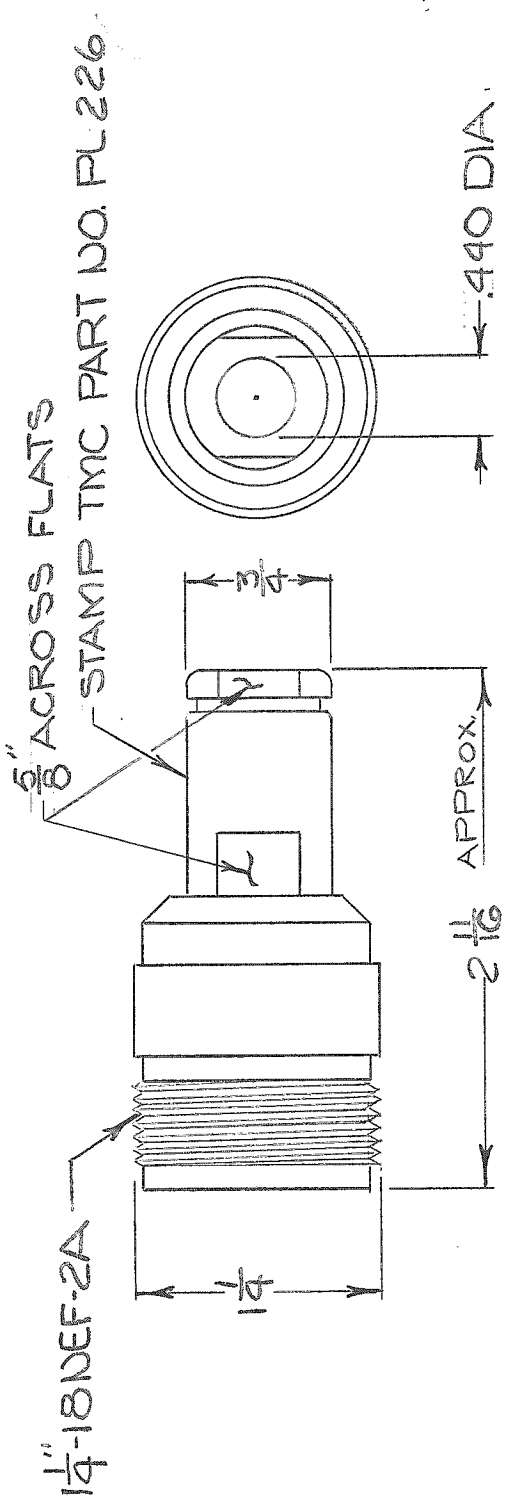


REQ.	ITEM	PART NO.	MARTINENGO DESCRIPTION				SYMBOL
			THE TECHNICAL MATERIEL CORP. MAMARONECK. NEW YORK				
			CONNECTOR, PLUG				
			QDM TO RG-59/U, RG-62/U				
A	TYPE OF CONTACT WAS FEMALE	12.5.66	17402	RME	QC	QC	
SYM	DESCRIPTION	DATE	CH. NO.	DRAFTS	CHECKER	ENG. APP.	
UNLESS OTHERWISE SPECIFIED DIMENSIONS ARE IN INCHES AND INCLUDE CHEMICALLY APPLIED OR PLATED FINISHES		SCALE		M. TANTILLO			
				TYPE & TEMPER	HEAT TREAT. SPEC.	DRAWN	CHECKED
				SEE NOTES		FINAL APPROVAL	
				FINISH & SPEC. NO.		ELEC. DES. APP.	MECH. DES. APP.
DECIMALS .X ± .05 .XX ± .01 .XXX ± .005		FRACTIONS ± 1/64 ANGLES ± 0° 30'		CODE S401-70-3051		PL-223	
TOLERANCES						A	



REVISIONS

APPLICATION		REVISIONS							
QTY	MODEL USED ON	ASSY NO.	LTR	DESCRIPTION	DATE	E.M.N.NO	DRAFT	CHKD	APPD
			X1	COMPLETELY REV. & REDRAWN	10-3-67		R.G.		
			0	ORIG. RELEASE FOR PROD.	10-23-67	0	R.G.		



SPECIFICATIONS  
 SERIES: LC  
 NO. OF CONTACTS: ONE (1)  
 TYPE OF CONTACT: FEMALE (CAPTIVATED)  
 DIELECTRIC: TEFLON

ELECTRICAL DATA  
 MAX. PEAK OPR. VOLT: 5000 V  
 FREQ. LIMIT: 10,000 MHZ  
 NOMINAL IMPEDANCE: 50 OHMS  
CABLE ACCOMODATIONS  
 TYPES: RG 8, 9, 213, 214, 216/U  
MATERIAL:

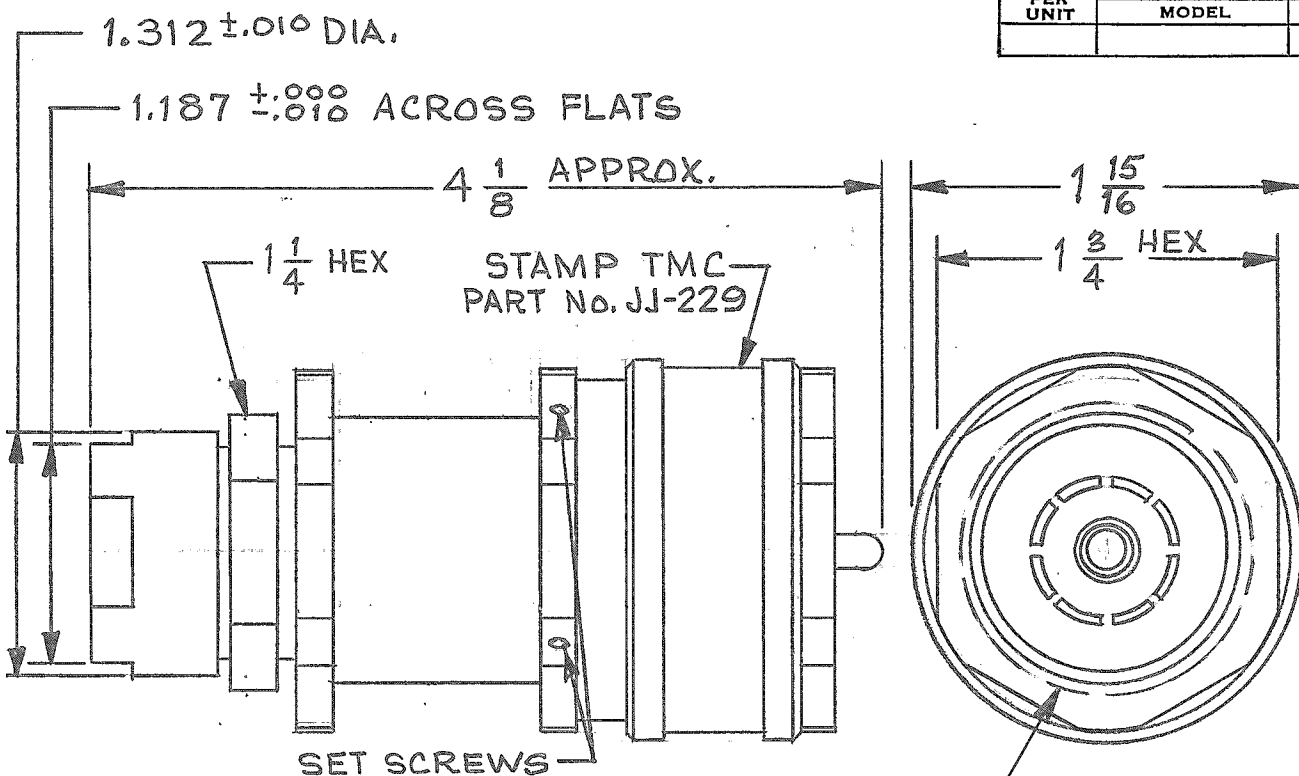
EXTERNAL PARTS: BRASS  
 MALE CONTACT: BRASS  
 FEMALE CONTACT: BERYLLIUM COPPER  
 GASKET: SILICONE RUBBER

FINISH  
 EXTERNAL PARTS: SILVER PLATE  
 CONTACT: SILVER PLATE  
 MATING CONNECTOR: UG-154 A/U

REQ'D	ITEM	PART NUMBER	DESCRIPTION	SYM.
LIST OF MATERIAL				
THE TECHNICAL MATERIEL CORP. MAMARONECK, NEW YORK				
RECEPTACLE, CONNECTOR LC(F) TO CABLE RG/U				
SIZE	CODE IDENT. NO.	DWG NO.	ISSUE	
A	82679	PL 226	0	

NOTICE TO PERSONS RECEIVING THIS DRAWING  
 THE TECHNICAL MATERIEL CORPORATION claims proprietary right in the material disclosed hereon. This drawing is issued in confidence for engineering information only and may not be reproduced or used to manufacture anything shown hereon without permission from THE TECHNICAL MATERIEL CORPORATION to the user. This drawing is loaned for mutual assistance and is subject to recall at any time.

REQ. PER UNIT	USED ON			PL-229
	MODEL	ASS'Y. NO.	DATE	



**SPECIFICATIONS:**  
 Series - QDL  
 No. of Contacts - ONE (1)  
 Type of Contacts - MALE (SEMI-) CAPTIVE  
 Dielectric - TEFLON

**ELECTRICAL DATA:**  
 Max. Peak Opr. Volt -  
 Freq. Limit - 1000 MCS  
 Nominal Impedance - 50 OHMS

**CABLE ACCOMMODATIONS:**  
 Type - RG-17, 18, 164, 217, 218, 219/U

**MATING ACCOMMODATIONS:**  
 Type - QDL

**MATERIAL:**  
 External Parts - BRASS  
 Contact - BERYLLIUM COPPER  
 Gasket - SILICONE RUBBER

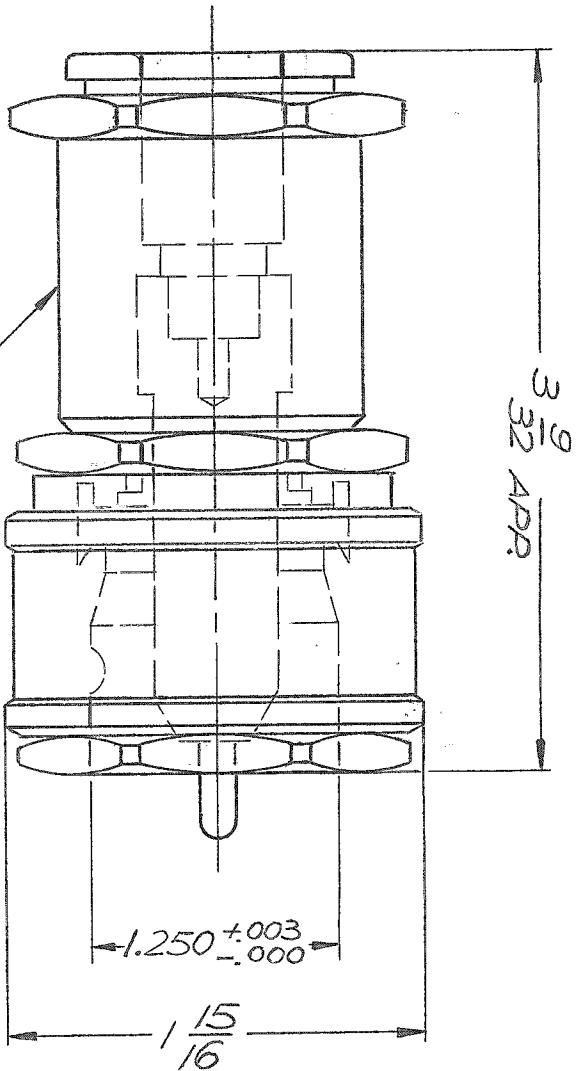
**FINISH:**  
 External Parts - RHODIUM  
 Contact - GOLD FLASH

**NOTES:**  
 1- CENTER CONDUCTOR SEMI-CAPTIVATED,  
 2- SAFETY LOCK; TMC PART NBR-CU-137.  
 3- REPLACEMENT FOR PL-136.  
 4- TOOLS REQUIRED FOR INSTALLATION TO CABLE:  
 THOMAS & BETTS  
 #21 DISC ON POWER TOOL T2B-13642  
 #21 DISC ON HAND TOOL WT-117  
 HAND TOOL TBM-2

1	3	ID-291	INSTALLATION INSTRUCTION
1	2	TP-120	DIELECTRIC DRESSING TOOL
1	1	WR-100-1	WRENCH, HEX

SYM	DESCRIPTION	DATE	CH. NO.	DRAFTS	CHECKER	ENG. APP.	REQ. ITEM	PART NO.	MARTINENGO DESCRIPTION	SYMBOL	
UNLESS OTHERWISE SPECIFIED DIMENSIONS ARE IN INCHES AND INCLUDE CHEMICALLY APPLIED OR PLATED FINISHES							THE TECHNICAL MATERIEL CORP. MAMARONECK, NEW YORK				
SCALE							STOCK SIZE				
MATERIAL							PLUG CONNECTOR				
TYPE & TEMPER							QDL (M) TO CABLE				
HEAT TREAT. SPEC.							M TANTILLO 10-5-63				
DRAWN							Jde 10/13				
CHECKED							BP				
FINAL APPROVAL							PL-229				
FINISH & SPEC. NO.							ELEC. DES. APP. MECH. DES. APP.				
DECIMALS X ± .05 TOLERANCES .XX ± .01 .XXX ± .005							FRACTIONS ± 1/64 ANGLES ± 0° 30'				
CODE							S401-70-2947				

APPLICATION			REVISIONS						
QTY	MODEL USED ON	ASSY NO.	LTR	DESCRIPTION	DATE	E.M.N.NO	DRAFT	CHKD	APPD
			X	EXPERIMENTAL RELEASE	11.5.68		K.H.		<i>[Signature]</i>
			Q	ORIG. RELEASE	12.3.68			S.D.	<i>[Signature]</i>



DIELECTRIC: TEFLON

UNLESS OTHERWISE SPECIFIED DIMENSIONS ARE IN INCHES AND INCLUDE CHEMICALLY APPLIED OR PLATED FINISHES		REQ'D ITEM	PART NUMBER	DESCRIPTION	SYM.
DECIMALS FRACTIONS		LIST OF MATERIAL			
X ± .03	1/64	FINAL APPROV	DATE	THE TECHNICAL MATERIEL CORP.	
.XX ± .01	ANGLES	MECH. DES.	DATE	MAMARONECK, NEW YORK	
.XXX ± .005	0° - 30°	ELECT. DES.	DATE	CONNECTOR, PLUG QDL	
FINISH		CHECKED	DATE	CABLE 421-103	
SA01-70(2706)		DRAWN	DATE	SIZE	CODE IDENT. NO.
NOTICE TO PERSONS RECEIVING THIS DRAWING THE TECHNICAL MATERIEL CORPORATION claims proprietary right in the material disclosed hereon. This drawing is issued in confidence for engineering information only and may not be reproduced or used to manufacture anything shown hereon without permission from THE TECHNICAL MATERIEL CORPORATION to the user. This drawing is loaned for mutual assistance and is subject to recall at any time.		SCALE		DWG NO.	ISSUE
				A	82679
					PL - 232
					OF

THE CONTENTS OF THIS DRAWING ARE THE EXCLUSIVE PROPERTY OF THE TECHNICAL MATERIEL CORP. ITS UNAUTHORIZED USE FOR REPRODUCTION IN WHOLE OR IN PART IS STRICTLY FORBIDDEN.

REQ. PER UNIT

USED ON

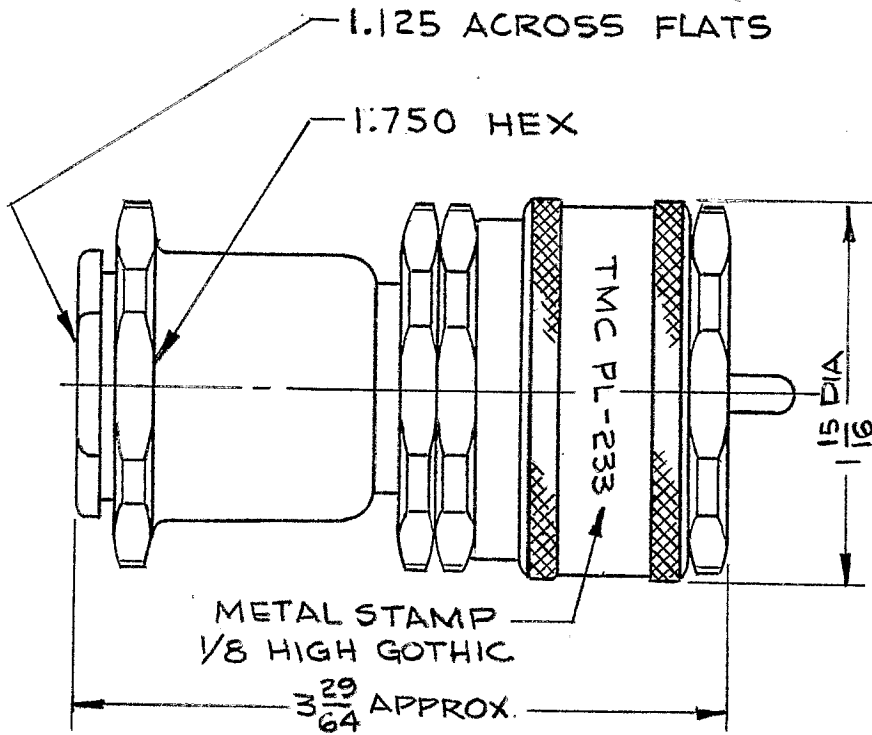
MODEL

ASS'Y. NO.

DATE

6-7-63

PL-233



**SPECIFICATIONS:**

Series - QDL  
 No. of Contacts - One (1)  
 Type of Contact - Male  
 Dielectric - Teflon

**ELECTRICAL DATA:**

Max. Peak Opr. Volt - 10,000 V.  
 Freq. Limit - 1,000 MC  
 Nominal Impedance - 50 Ohms

**CABLE ACCOMMODATIONS:**

Type - RG-211/U

**MATERIAL:**

External Parts - Brass  
 Contact - Brass  
 Gaskets - Silicone Rubber  
 Contact Fingers - Beryllium Copper

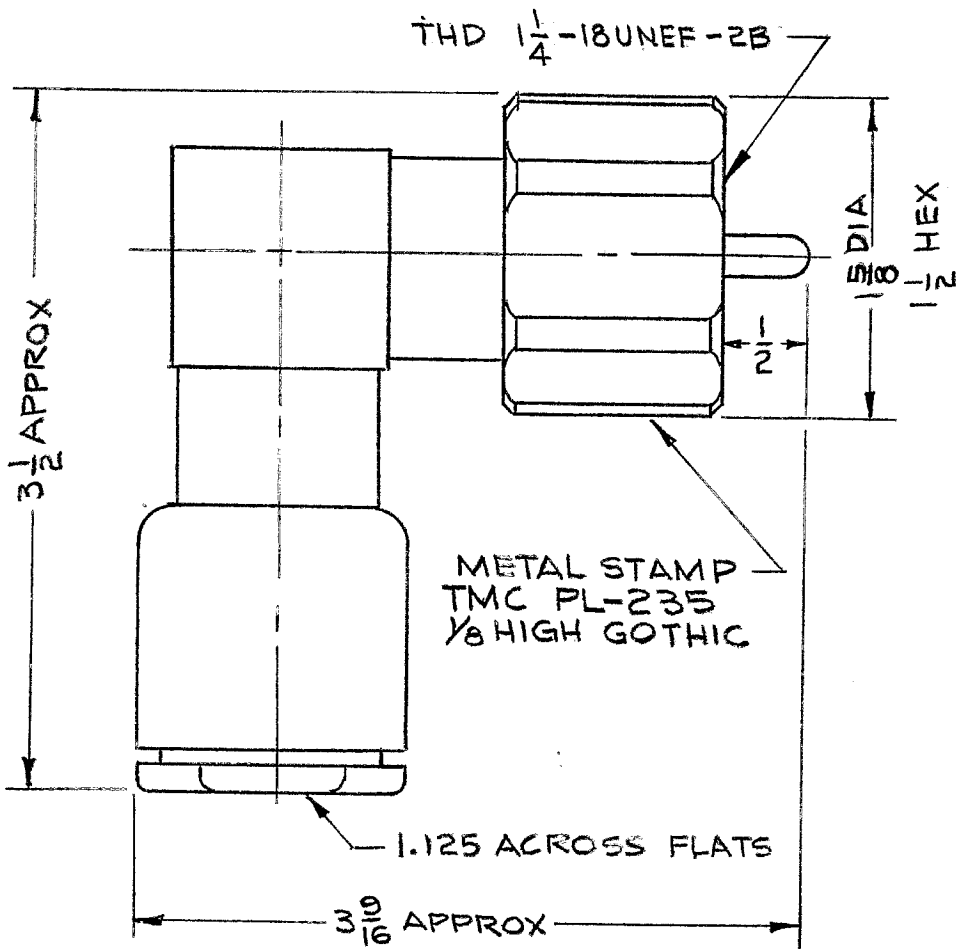
**FINISH:**

External Parts - Silver Plate and Rhodium Flash  
 Contact, Fingers - Silver Plate and Gold Flash

SYM	DESCRIPTION	DATE	CH. NO.	DRAFTS	CHECKER	ENG. APP.	REQ. ITEM	PART NO.	MATERIAL	DESCRIPTION	SYMBOL
										THE TECHNICAL MATERIEL CORP. MAMARONECK, NEW YORK CONNECTOR, PLUG QDL, CABLE RG-211/U	
								STOCK SIZE			
UNLESS OTHERWISE SPECIFIED DIMENSIONS ARE IN INCHES AND INCLUDE CHEMICALLY APPLIED OR PLATED FINISHES							SCALE	NONE			
DECIMALS .X ± .05 .XX ± .01 .XXX ± .005							TOLERANCES	FRACTIONS ± 1/64 ANGLES ± 0° 30'		CODE	S401-70(2952)
							TYPE & TEMPER	HEAT TREAT. SPEC.	DRAWN	CHECKED	FINAL APPROVAL
							FINISH & SPEC. NO.	ELEC. DES. APP.	MECH. DES. APP.		PL-233

THE CONTENTS OF THIS DRAWING ARE THE EXCLUSIVE PROPERTY OF THE TECHNICAL MATERIEL CORP. ITS UNAUTHORIZED USE FOR REPRODUCTION IN WHOLE OR IN PART IS STRICTLY FORBIDDEN.

REQ. PER UNIT	USED ON			PL-235
	MODEL	ASS'Y. NO.	DATE	
			6-7-63	



**SPECIFICATIONS:**  
 Series - LC (10)  
 No. of Contacts - One (1)  
 Type of Contact - Male  
 Dielectric - Teflon

**ELECTRICAL DATA:**  
 Max. Peak Opr. Volt - 10,000 V.  
 Freq. Limit - 1,000 MC  
 Nominal Impedance - 50 Ohms

**CABLE ACCOMMODATIONS:**  
 Type - RG-211/U

**MATERIAL:**  
 External Parts - Brass  
 Contact - Brass  
 Gaskets - Silicone Rubber  
 Contact Fingers - Beryllium  
 Copper

**FINISH:**  
 External Parts - Silver Plate  
 and Rhodium Flash  
 Contact, Fingers - Silver Plate  
 and Gold Flash

SYM	DESCRIPTION	DATE	CH. NO.	DRAFTS	CHECKER	ENG. APP.	REQ. ITEM	PART NO.	DESCRIPTION	SYMBOL
									THE TECHNICAL MATERIEL CORP. MAMARONECK, NEW YORK	
									CONNECTOR, PLUG, LC 10, RIGHT ANGLE, RG-211/U	
UNLESS OTHERWISE SPECIFIED DIMENSIONS ARE IN INCHES AND INCLUDE CHEMICALLY APPLIED OR PLATED FINISHES							SCALE			
							NONE			
TOLERANCES		FRACTIONS		CODE			TYPE & TEMPER		HEAT TREAT. SPEC.	
.X ± .05 .XX ± .01 .XXX ± .005		± 1/64 ANGLES ± 0° 30'		3401-70 (2957)						
							FINISH & SPEC. NO.		ELEC. DES. APP. MECH. DES. APP.	
									DRAWN CHECKED FINAL APPROVAL	
									6/12/63 6-19-63	
									PL-235	

THE CONTENTS OF THIS DRAWING ARE THE EXCLUSIVE PROPERTY OF THE TECHNICAL MATERIEL CORP. ITS UNAUTHORIZED USE FOR REPRODUCTION IN WHOLE OR IN PART IS STRICTLY FORBIDDEN.

REQ. PER UNIT

USED ON

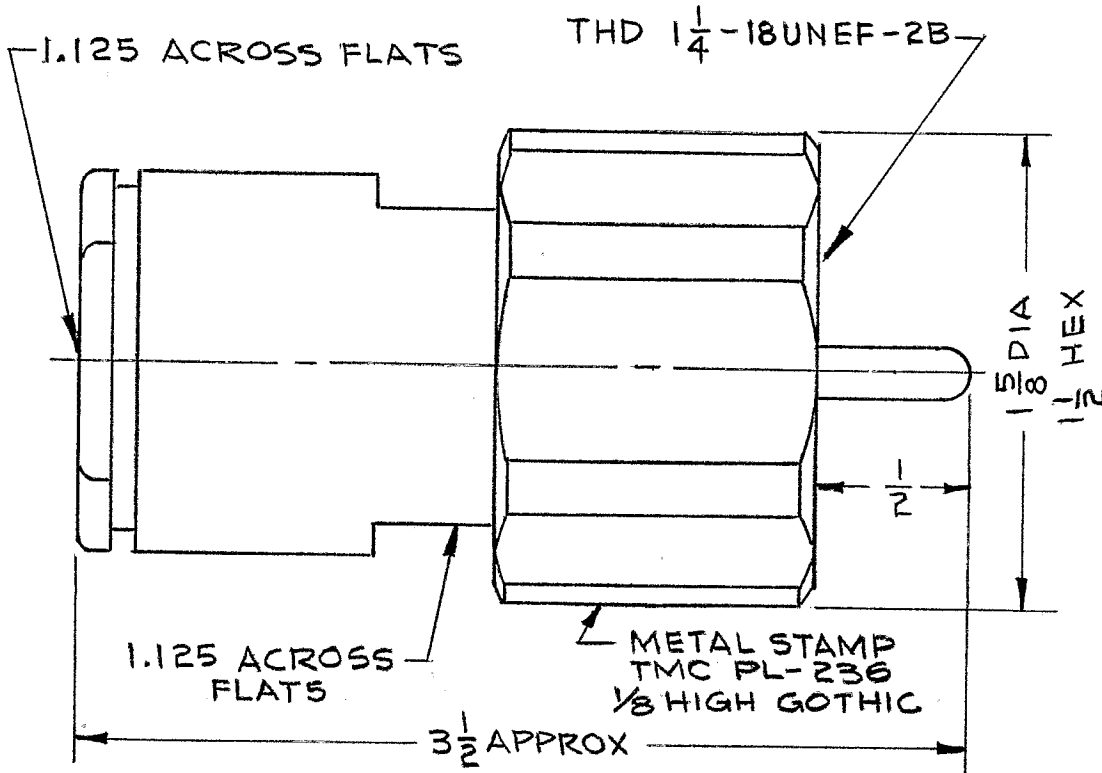
MODEL

ASS'Y. NO.

DATE

6-7-63

PL-236



**SPECIFICATIONS:**

Series - LC (10)  
No. of Contacts - One (1)  
Type of Contact - Male  
Dielectric - Teflon

**ELECTRICAL DATA:**

Max. Peak Opr. Volt - 10,000 V.  
Freq. Limit - 1,000 MC  
Nominal Impedance - 50 Ohms

**CABLE ACCOMMODATIONS:**

Type - RG-211/U

**MATING ACCOMMODATIONS:**

Type -

**MATERIAL:**

External Parts - Brass  
Contact - Brass  
Gaskets - Silicone Rubber  
Contact Fingers - Beryllium Copper

**FINISH:**

External Parts - Silver Plate and Rhodium Flash  
Contact, Fingers - Silver Plate and Gold Flash

SYM	DESCRIPTION	DATE	CH. NO.	DRAFTS	CHECKER	ENG. APP.	REQ. ITEM	PART NO.	MARTINENGO DESCRIPTION	SYMBOL
									THE TECHNICAL MATERIEL CORP. MAMARONECK, NEW YORK	
									CONNECTOR, PLUG	
									LC 10 TO CABLE RG-211/U	
									6.14.63	
									CHECKED	
									MECH. DES. APP.	
									PL-236	

THE CONTENTS OF THIS DRAWING ARE THE EXCLUSIVE PROPERTY OF THE TECHNICAL MATERIEL CORP. ITS UNAUTHORIZED USE FOR REPRODUCTION IN WHOLE OR IN PART IS STRICTLY FORBIDDEN.

REQ. PER UNIT

USED ON

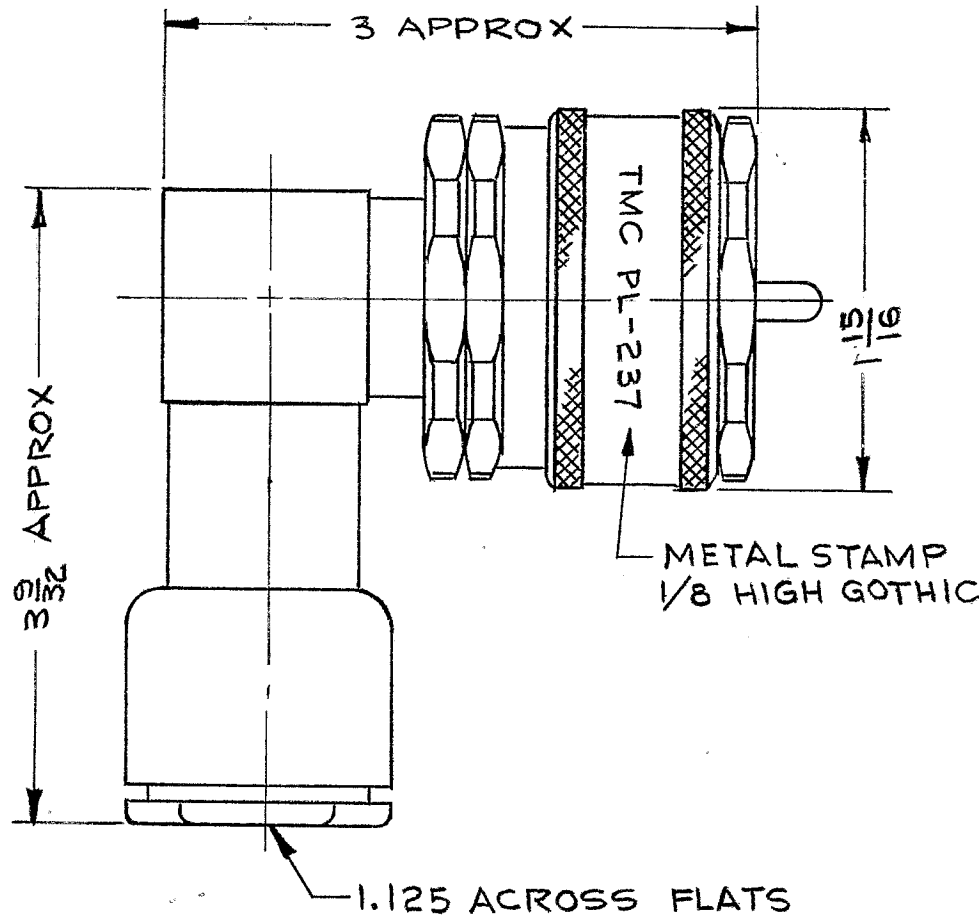
MODEL

ASSY. NO.

DATE

6-7-63

PL-237



**SPECIFICATIONS:**

Series - QDL  
 No. of Contacts - One (1)  
 Type of Contact - Male  
 Dielectric - Teflon

**ELECTRICAL DATA:**

Max. Peak Opr. Volt - 10,000 V.  
 Freq. Limit - 1,000 MC  
 Nominal Impedance - 50 Ohms

**CABLE ACCOMMODATIONS:**

Type - RG-211/U

**MATERIAL:**

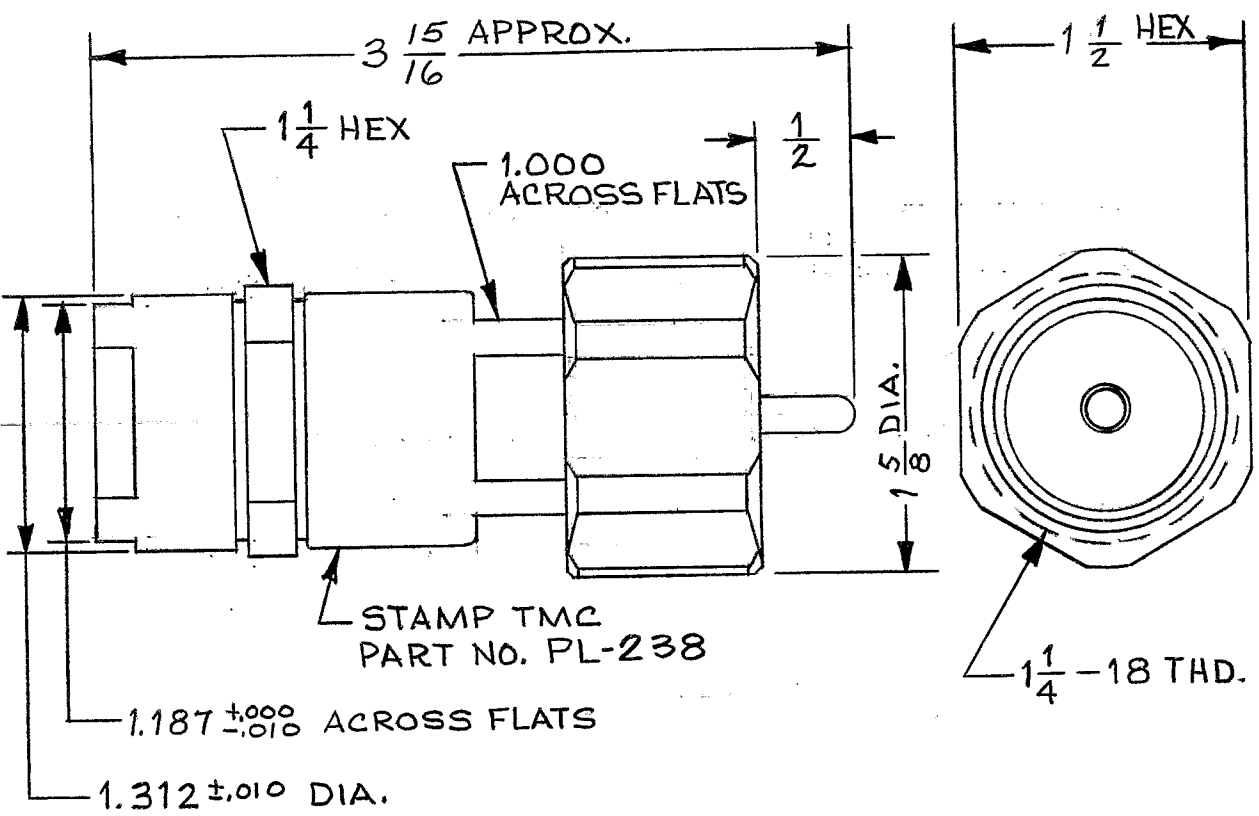
External Parts - Brass  
 Contact - Brass  
 Gasket - Silicone Rubber  
 Contact Fingers - Beryllium Copper

**FINISH:**

External Parts - Silver Plate and Rhodium Flash  
 Contact, Fingers - Silver Plate and Gold Flash

							REQ. ITEM	PART NO.	MATERIAL	DESCRIPTION	SYMBOL	
										MAR 29 63		
							STOCK SIZE		THE TECHNICAL MATERIEL CORP. MAMARONECK, NEW YORK			
									CONNECTOR, PLUG, RIGHT ANGLE			
									QDL TO CABLE RG-211AU			
SYM	DESCRIPTION	DATE	CH. NO.	DRAFTS	CHECKER	ENG. APP.	MATERIAL					
UNLESS OTHERWISE SPECIFIED DIMENSIONS ARE IN INCHES AND INCLUDE CHEMICALLY APPLIED OR PLATED FINISHES		SCALE		NONE								
DECIMALS .X ± .05 .XX ± .01 .XXX ± .005		FRACTIONS ± 1/64 ANGLES ± 0° 30'		CODE			TYPE & TEMPER		HEAT TREAT. SPEC.	DRAWN	CHECKED	FINAL APPROVAL
TOLERANCES		S 401-70 (2953)									6-14-63	
							FINISH & SPEC. NO.		ELEC. DES. APP.	MECH. DES. APP.	PL-237	

REQ. PER UNIT	USED ON		
	MODEL	ASS'Y. NO.	DATE
			PL-238



**SPECIFICATIONS:**

Series - LC  
 No. of Contacts - ONE (1)  
 Type of Contact - MALE (CAPTIVE)  
 Dielectric - TEFLON

**ELECTRICAL DATA:**

Max. Peak Opr. Volt - 5,000 V  
 Freq. Limit - 1,000 MCS  
 Nominal Impedance - 50 OHMS

**CABLE ACCOMMODATIONS:**

Type - RG-17, 18, 218, 219/U

**MATING ACCOMMODATIONS:**

Type -

**MATERIAL:**

External Parts - BRASS  
 Contact - BERYLLIUM COPPER  
 Gasket - SILICONE RUBBER

**FINISH:**

External Parts - RHODIUM  
 Contact - GOLD FLASH

**PANEL:**

Max. Thickness NONE

**NOTE:**

- 1-REPLACEMENT FOR UG-154/U.
- 2-CENTER CONDUCTOR CAPTIVATED.

REQ.	ITEM	PART NO.	MARTINENG'D	DESCRIPTION	SYMBOL
				THE TECHNICAL MATERIEL CORP. MAMARONECK, NEW YORK	
				STOCK SIZE	
				MATERIAL	
				PLUG, CONNECTOR LC (M) TO CABLE	
			M. TANTILLO 10-4-63	10/4/63	BP
			TYPE & TEMPER	HEAT TREAT. SPEC.	DRAWN
					CHECKED
					FINAL APPROVAL
					10-5-63
					PL-238
				FINISH & SPEC. NO.	ELEC. DES. APP. MECH. DES. APP.

UNLESS OTHERWISE SPECIFIED  
 DIMENSIONS ARE IN INCHES AND INCLUDE  
 CHEMICALLY APPLIED OR PLATED FINISHES

DECIMALS  
 .X ± .05  
 .XX ± .01  
 .XXX ± .005

FRACTIONS  
 ± 1/64  
 ANGLES  
 ± 0° 30'

TOLERANCES

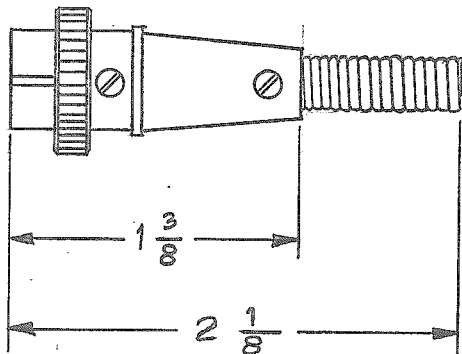
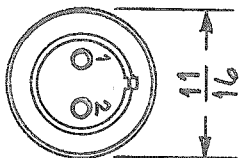
CODE S401-70-



TMC PART NO.	MFG. NO.	CONTACT	MATING CONN.	MATING PLUG	REQ. PER UNIT	USED ON		
						MODEL	ASS'Y. NO.	DATE
PL-239-1	80 M	1	—	—				PL-239
PL-239-2	80MC2M	2	JJ-10004	—				

**SPECIFICATIONS**

1. Quantity of Connector Mating Ends: 1
2. Contact Data
  - A. Type: Male
  - B. Style: Round
  - C. Current Rating: 3 amps
  - D. Volt. Rating: 600 V RMS
  - E. Contact Connected to Shell: No
  - F. Contact Ext. Grounding: No
  - G. Material: Brass
  - H. Finish: Silver Plate
3. Dielectric: Black Phenolic, Grade CFG
4. Shell Data
  - A. Inclosing: Inclosing Shell
  - B. Material: Brass
  - C. Finish: Chrome
5. Polarization: Key
6. Locking Data
  - A. Type: Coupling Nut
  - B. Threads: 5/8-27 thd., internal
7. Cable Data
  - A. Maximum Cable Size Accommodation: 1/4"
  - B. Cable Clamp: None
  - C. Cord Protector: Spring Guard
8. Mates With: JJ10004



SYM	DESCRIPTION	DATE	CH. NO.	DRAFTS	CHECKER	ENG. APP.	REQ. ITEM	PART NO.	MARTINENGO DESCRIPTION	SYMBOL			
									THE TECHNICAL MATERIEL CORP. MAMARONECK, NEW YORK				
								STOCK SIZE					
								SEE NOTE	CONNECTOR, PLUG, ELECTRICAL				
								MATERIAL					
	UNLESS OTHERWISE SPECIFIED DIMENSIONS ARE IN INCHES AND INCLUDE CHEMICALLY APPLIED OR PLATED FINISHES	SCALE	NTS						MTANTILLO 11-13-63	<i>BP</i>			
	DECIMALS .X ± .05 .XX ± .01 .XXX ± .005	FRACTIONS ± 1/64 ANGLES ± 0° 30'	CODE	S401-71					TYPE & TEMPER	HEAT TREAT. SPEC.	DRAWN	CHECKED	FINAL APPROVAL
	TOLERANCES							SEE NOTE		QC 11/26/63	<i>BP</i>	PL-239	
								FINISH & SPEC. NO.		ELEC. DES. APP.	MECH. DES. APP.		

# STANDARD DRAWING

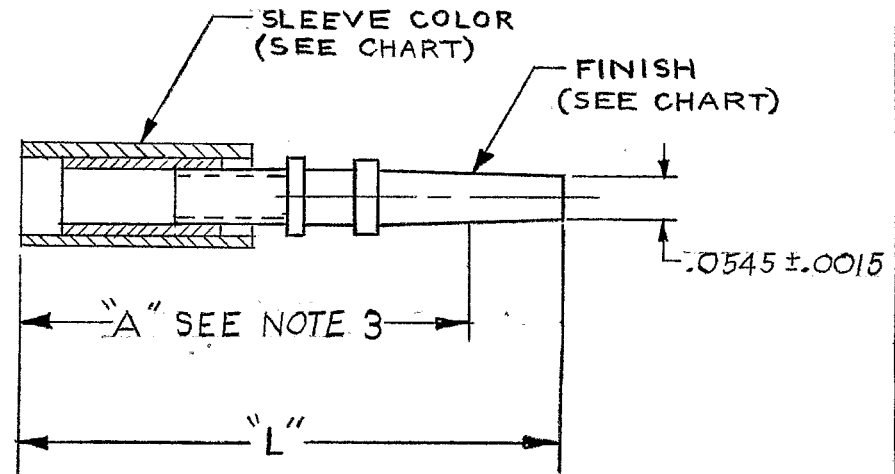
PL-242 B

TMC PART NO.	MFRS PART NO.	"A"	"L" ±.030	SLEEVE COLOR	FINISH	WIRE SIZE
PL 242-1	42574-3	.580	.720	YELLOW	GOLD	24-22
PL 242-2	42927-3	.580	.720	BLUE	GOLD	26
PL 242-3	42575-3	.580	.715	NATURAL	GOLD	20-18
PL 242-4	42637-3	.580	.715	BLACK	GOLD	16

REQ. PER UNIT	USED ON		
	MODEL	ASS'Y. NO.	DATE
	LPP-4	CA-855	3/13/64
		CA-856	
		CA-875	
		CA-883	
	VLRB-1	CA-935	10/9/64
	VLRB-1	CA-937	10-9-64
	DDRR506		3-10-65
	TSTE10K		3-10-65

**NOTES:**

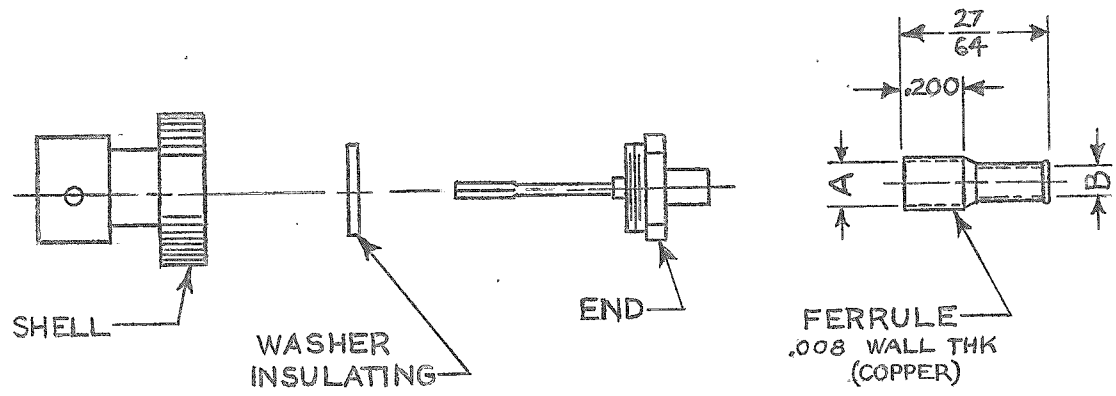
- 1-MATERIAL - PIN (BRASS)  
SLEEVING (NYLON)
- 2-CRIMPING TOOL-MFG. P/N-90015
- 3-MAX. INSTALLED EXTENSION, SEE CHART.
- 4-USED WITH TM 126, TM128 TERMINAL BOARDS.



SYM	DESCRIPTION	DATE	CH. NO.	DRAFTS	CHECKER	ENG. APP.	REQ. ITEM	PART NO.	I. JOHNSON DESCRIPTION	SYMBOL	
B	-3, -4, & WIRE SIZE COL. ADD. TO CHART; U/O: "DDRR506" & "TSTE10K" ADD.	3-12-65	13694	2 P.	JOB				THE TECHNICAL MATERIEL CORP. MAMARONECK, NEW YORK CONNECTOR PLUG TAPER PIN	PL-242 B	
A	PL 242-2 ADDED TO CHART, U/O UPDATED, ON PICT. IT4 ADDED.	10-12-64	12615	2 P.							
O	ORIGINAL RELEASE FOR PRODUCTION	4-10-64		A.M.	@						
X	EXPERIMENTAL RELEASE	3/25		NP	@						
UNLESS OTHERWISE SPECIFIED DIMENSIONS ARE IN INCHES AND INCLUDE CHEMICALLY APPLIED OR PLATED FINISHES		SCALE		---			---	---	DRAWN: <i>N. Peterson</i> @ 4-10-64 CHECKED: <i>R. [unclear]</i> FINAL APPROVAL:		
DECIMALS .X ± .05 .XX ± .01 .XXX ± .005	TOLERANCES	FRACTIONS ± 1/64 ANGLES ± 0° 30'	CODE C	S401-279			TYPE & TEMPER	HEAT TREAT. SPEC.	FINISH & SPEC. NO.	ELEC. DES. APP.	MECH. DES. APP.

PL 243-1	MFRS PART NO. 2-330059-1	FERRULE				REQ. PER UNIT	USED ON			PL 243	Ø
		"A" I.D.	"B" I.D.	COLOR	CABLE ACCOMMODATED		MODEL STD	ASS'Y. NO.	DATE 3-16-64		

- SPECIFICATIONS**
- QUANTITY OF CONTACTS: ONE
  - QUANTITY OF MATING ENDS: ONE
  - CONTACT DATA
    - IDENTICAL CONTACTS: 1
    - TYPE: MALE
    - STYLE: PIN
    - CURRENT RATING:
    - DCWV:
    - ACWV:
    - IMPEDANCE IN OHMS:
    - CONTACT CONNECTED TO SHELL: NO
    - CONTACT WIRED FOR EXTERNAL GRD: NO
    - MATERIAL: BERRILIUM COPPER
    - FINISH: GOLD PLATE OVER SILVER PLATE
  - DIELECTRIC: POLYPROPYLENE
  - SHELL
    - TYPE: INCLOSING
    - MATERIAL: BRASS
    - FINISH: NICKEL PLATE
  - POLARIZATION: BAYONET
  - LOCKING TYPE: TWIST
  - CABLE ACCOMMODATION DATA
    - COAX CABLE (SEE CHART)
    - CABLE CLAMP: CRIMP
  - MATES WITH: BNC RECEPTACLES
  - TOOL NO. 69245-2



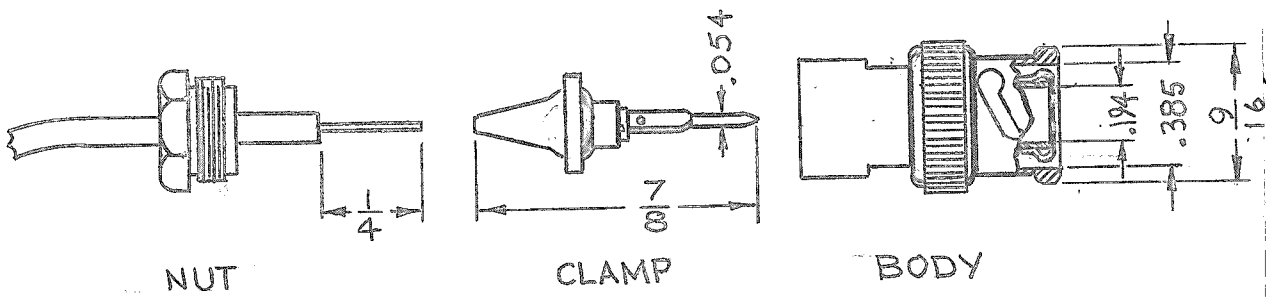
STANDARD DRAWING

Ø ORIGINAL RELEASE FOR PRODUCTION	9/10/64	Ø	PL	REQ. ITEM	PART NO.	I. JOHNSON DESCRIPTION			SYMBOL		
X1 MFR WAS S401-71 CONT MAT. WAS BRASS COAT FINISH WAS SILVER MFR P/N WAS 2-330060-1	6/25/64	X1	AM	STOCK SIZE		THE TECHNICAL MATERIEL CORP. MAMARONECK. NEW YORK					
X EXPERIMENTAL RELEASE	3/16/64		NP	MATERIAL		CONNECTOR, BNC PLUG, CRIMP KIT					
SYMBOL	DESCRIPTION	DATE	CH. NO.	DRAFTS	CHECKER	ENG. APP.					
UNLESS OTHERWISE SPECIFIED DIMENSIONS ARE IN INCHES AND INCLUDE CHEMICALLY APPLIED OR PLATED FINISHES		SCALE	—//—			TYPE & TEMPER		HEAT TREAT. SPEC.	DRAWN	CHECKED	FINAL APPROVAL
DECIMALS .X ± .05 .XX ± .01 .XXX ± .005	TOLERANCES	FRACTIONS ± 1/64 ANGLES ± 0° 30'	CODE	S401-279			FINISH & SPEC. NO.		ELEC. DES. APP.	MECH. DES. APP.	PL 243

# STANDARD DRAWING

REQ. PER UNIT	USED ON			PL-244 B
	MODEL	ASS'Y. NO.	DATE	
—	STANDARD	—	4-2-64	

TMC P/N	MFG P/N	CABLE ACCOMMODATED	REPLACES
PL244-1	30220-13	RG174/U	PL240 PL169

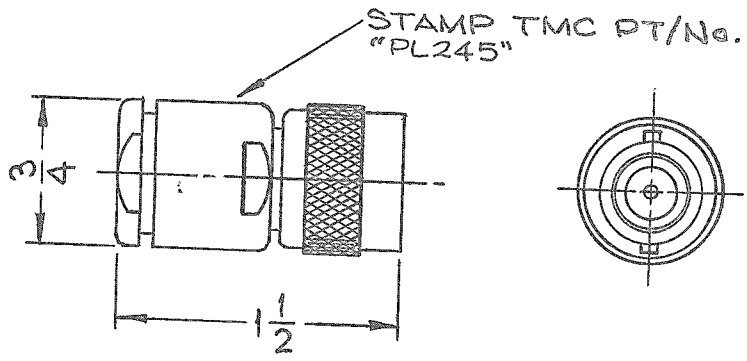
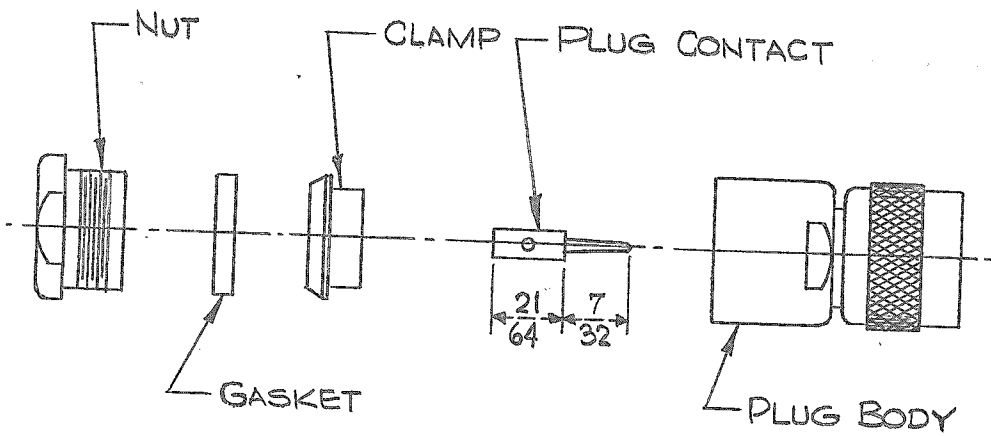


**NOTE:**  
APPROXIMATE ASSEMBLED LENGTH 1 1/16

- ### SPECIFICATIONS
- QUANTITY OF CONTACTS: ONE
  - QUANTITY OF MATING CONTACTS: ONE
  - CONTACT DATA
    - (A) TYPE: MALE
    - (B) STYLE: PIN
    - (C) VOLTAGE RATING: 500V PEAK
    - (D) MATERIAL: BRASS
    - (E) FINISH: GOLD OR SILVER PLATE
  - DIELECTRIC: POLYTETRAFLUOROETHYLENE
  - SHELL DATA
    - (A) TYPE: INCLOSING
    - (B) MATERIAL: BRASS
    - (C) FINISH: SILVER PLATE
  - IMPEDANCE: 50 OHMS NOMINAL
  - POLORIZATION; BAYONET
  - LOCKING: TWIST
  - CABLE ACCOMMODATION DATA:
    - (A) COAX CABLE: SEE CHART
  - MATES WITH BNC RECEPTACLE.

B	COMPLETELY REVISED PER EMM, 14019	5.7.65	14019	dr.	ACB	REQ.	ITEM	PART NO.	CARMARZDA	DESCRIPTION	SYMBOL
A	"REPLACES" COLUMN ADDED	9.16.64	12370	WB	a	—			THE TECHNICAL MATERIEL CORP. MAMARONECK, NEW YORK		
O	ORIGINAL RELEASE FOR PRODUCTION	4-10-64		A.M.	Q	SEE SPEC.			CONNECTOR, PLUG, BNC, CRIMP TYPE		
X	EXPER. RELEASE	4-2-64	1	G. Jensen	Q	MATERIAL					
SYM	DESCRIPTION	DATE	CH. NO.	DRAFTS	CHECKER	ENG. APP.	UNLESS OTHERWISE SPECIFIED DIMENSIONS ARE IN INCHES AND INCLUDE CHEMICALLY APPLIED OR PLATED FINISHES			SCALE	
							TYPE & TEMPER	HEAT TREAT. SPEC.	DRAWN	CHECKED	FINAL APPROVAL
							SEE SPEC.	SEE SPEC.	G. Jensen @ 4-10-64	RC	
							FINISH & SPEC. NO.	ELEC. DES. APP.	MECH. DES. APP.	PL-244	B
DECIMALS		FRACTIONS		TOLERANCES		CODE					
.X ± .05		± 1/64		± .01		C		5401-133			
.XXX ± .005		ANGLES ± 0° 30'									

REQ. PER UNIT	USED ON			PL 245	Ø
	MODEL	ASS'Y. NO.	DATE		



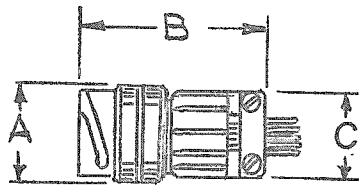
SPECIFICATIONS

SERIES : "C"  
 NO. OF CONTACTS : ONE (1)  
 TYPE OF CONTACT : MALE  
 DIELECTRIC : TEFLON  
ELECTRICAL DATA :  
 MAX. PEAK OPR. VOLT : 1,500 V  
 FREQ. LIMIT : 10,000 MHZ  
 NOMINAL IMPEDANCE : CONSTANT FOR 50 OHMS  
CABLE ACCOMODATIONS :  
 TYPE : RG-8/U , RG-9/U  
MATERIAL :  
 EXTERNAL PARTS : BRASS  
 CONTACT : BERYLLIUM COPPER  
 GASKET : SILICONE  
FINISH :  
 EXTERNAL PARTS : SILVER PLATE, RHODIUM FLASH.  
 CONTACT : SILVER PLATE, GOLD FLASH  
MATING CONNECTOR : JJ 309  
 (FOR STANDARD "C" SERIES USE UG 573/U)

Ø	ORIGINAL RELEASE	8/26/69					REQ. ITEM	PART NO.	MARTINENGO DESCRIPTION	SYMBOL		
X2	SPEC & ELECT. DATA UPDATED	9.20.67		ENJ					THE TECHNICAL MATERIEL CORP. MAMARONECK, NEW YORK			
X1	"PT/No Note added	2.20.67	4	WV					PLUG, CONNECTOR			
SYM	DESCRIPTION	DATE	CH. NO.	DRAFTS	CHECKER	ENG. APP.			"C" SERIES SPECIAL			
UNLESS OTHERWISE SPECIFIED DIMENSIONS ARE IN INCHES AND INCLUDE CHEMICALLY APPLIED OR PLATED FINISHES							SCALE					
DECIMALS .X ± .05 .XX ± .01 .XXX ± .005	TOLERANCES	FRACTIONS ± 1/64 ANGLES ± 0° 30'	CODE C	S401-70( )								
							SEE SPECS.					
							TYPE & TEMPER	HEAT TREAT. SPEC.	3-23-66 H.AUSTIN	DRAWN	CHECKED	
							FINISH & SPEC. NO.				FINAL APPROVAL	
											PL 245	Ø
										ELEC. DES. APP.	MECH. DES. APP.	

STANDARD DRAWING

					REQ. PER UNIT	USED ON			PL248	Ø
						MODEL	ASS'Y. NO.	DATE		
						RAK-51		1-4-65		
TMC P/N	MFG. P/N	CONTACTS		WIRE SIZE	A MAX.	B MAX.	C MAX.	CONSTRUCTION	MATES WITH	
		TYPE	QUAN.							
PL248-1	67-01C18-24S	SOCKET	24	20	1.232	1.870	1.185	C		PL212-3
PL248-2	67-01C18-64S	SOCKET	14	16	1.232	1.870	1.185	C		PL212-1



"C" CONSTRUCTION-WITH STANDARD CABLE CLAMP FOR UNJACKETED INDIVIDUAL WIRE LEADS.

SPECIFICATIONS

OPERATING TEMP: -55°C TO +125°C  
 VOLTAGE RATING: 500V RMS  
 CURRENT RATING  
 NO. 16 CONTACTS: 17.0 AMPS  
 NO. 20 CONTACTS: 7.5 AMPS

TO MEET REQUIREMENTS OF MIL-C5015

STANDARD DRAWING

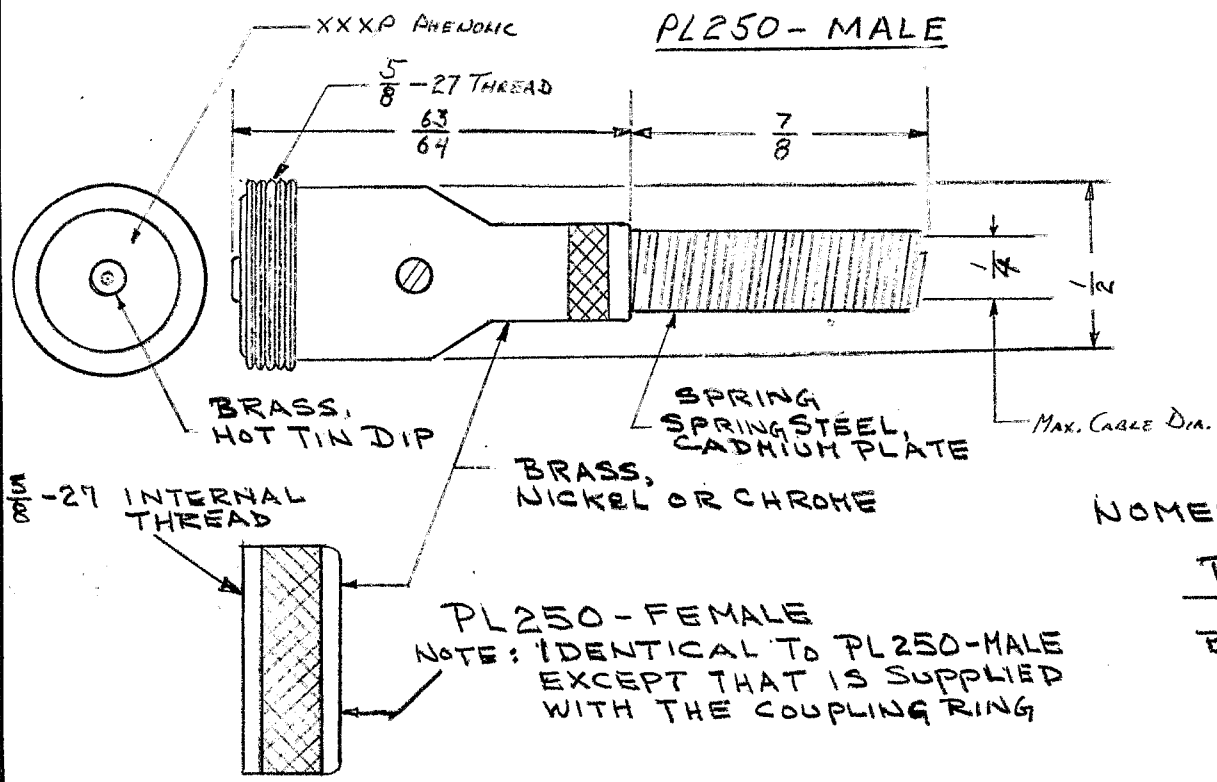
								REQ. ITEM	PART NO.	DESCRIPTION	SYMBOL		
Ø	ORIGINAL RELEASE FOR PRODUCTION	1-13-65	Ø	Ø				*	STOCK SIZE	THE TECHNICAL MATERIEL CORP. MAMARONECK, NEW YORK			
X	EXPER. RELEASE	1-5-65		G.D.L.				*		CONNECTOR, PLUG			
SYM	DESCRIPTION	DATE	CH. NO.	DRAFTS	CHECKER	ENG. APP.			MATERIAL	CABLE TO CABLE			
UNLESS OTHERWISE SPECIFIED DIMENSIONS ARE IN INCHES AND INCLUDE CHEMICALLY APPLIED OR PLATED FINISHES						SCALE DO NOT SCALE				G.D.L	@		
DECIMALS .X ± .05 .XX ± .01 .XXX ± .005	TOLERANCES	FRACTIONS ± 1/64 ANGLES ± 0° 30'	CODE C	S401-71				TYPE & TEMPER	HEAT TREAT, SPEC.	DRAWN	CHECKED	FINAL APPROVAL	
												PL248	Ø
								FINISH & SPEC. NO.		ELEC. DES. APP.	MECH. DES. APP.		

REQ. PER UNIT 1	USED ON		PL250	Ø
	MODEL MK102	ASSY. NO. A1190		

# STANDARD DRAWING

## SPECIFICATIONS

QUAN. OF CONTACTS: ONE  
 SEX: NONE  
 STYLE: BUTTON  
 POLARIZATION: NONE  
 ENVIRONMENTAL: NOT RATED  
 WORKING VOLTAGE & CURRENT: NOT RATED  
 IMPEDANCE: HIGH



NOTE: KNURL DESIGN OPTIONAL

NOMENCLATURE TO BE IN FOLLOWING FORM

PL250      M  
 BASIC NO      INDICATES  
                          M = MALE  
                          F = FEMALE

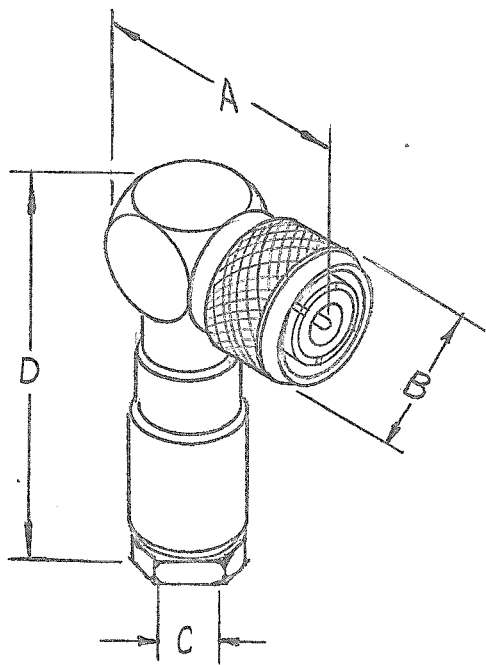
REQ. ITEM	PART NO.	DESCRIPTION	SYMBOL
		THE TECHNICAL MATERIEL CORP. MAMARONECK. NEW YORK	
		CONNECTOR, PLUG, MICROPHONE	
Ø		ORIGINAL RELEASE FOR PRODUCTION 12/14/65	
ISSUE	ITEM	CHANGED FROM	DATE CH. NO. DRAFTS CHECKER ENG. APP.
TOLERANCES		SCALE: NONE	
DEC. DIM. ± FOR REF.		MAXIMUM ALLOWABLE TOLERANCES HAVE BEEN DETERMINED AND ANY DEVIATIONS WILL BE CAUSE FOR REJECTION.	
FRAC. DIM. ± ONLY		REMOVE ALL BURRS AND SHARP EDGES	
ANGULAR DIM. ±			
TYPE & TEMPER		HEAT TREAT. SPEC.	DRAWN
FINISH & SPEC. NO.		ELEC. DES. APP.	MECH. DES. APP.
			PL250
			Ø

STANDARD DRAWING

TMC P/N	MFR P/N	A	B	C	D	WT LBS	USED WITH RG-U CABLE	REQ. PER UNIT	USED ON			PL253	Ø
								MODEL	ASS'Y. NO.	DATE			
PL253-1	82-856	1 1/2	7/8	.444	2.5/16	.172	8,9,9A,10	TST( )2.5K			10-20-66		

**SPECIFICATIONS**

TYPE: HN 90° ANGLE  
 NO. OF CONTACTS: 1 WITH SHELL GROUND  
 NO. OF MATING ENDS: 1  
 CABLE USED WITH: RG 8\*/U, RG9\*/U, RG10\*/U  
 CONTACT DATA:  
     TYPE OF CONTACT: MALE  
     STYLE: ROUND PIN  
     MATERIAL & FINISH: BRASS SILVER PLATE  
 DIELECTRIC: TEFLON  
 IMPEDANCE: 50 OHMS  
 FREQ RANGE: 0-10 GHz  
 VOLTAGE RATING: 1500 V PEAK  
 HI POTENTIAL: 5000 VRMS  
 TEMPERATURE: -60°C TO 200°C  
 SEALING: SILICONE RUBBER GASKETS  
 TYPE LOCKING: INTERNAL SCREW THREAD  
 THREAD SIZE: 3/4 - 20  
 BODY MATERIAL & FINISH: BRASS, SILVER PLATE



REQ. ITEM	PART NO.	F. BUDETTI DESCRIPTION	SYMBOL
		THE TECHNICAL MATERIEL CORP. MAMARONECK, NEW YORK	
Ø	ORIG RELEASE PROD. 12/6/66	PLUG, RIGHT ANGLE - HN	Ø
X	EXP. RELEASE 10-20-66		X
FORM	DESCRIPTION	DATE	CH. NO.
UNLESS OTHERWISE SPECIFIED DIMENSIONS ARE IN INCHES AND INCLUDE FINISHES		SCALE	
TOLERANCES	FRACTIONS ± 1/64 ANGLES ± 0° 30'	CODE C	S401-71(82856)
	TYPE & TEMPER	HEAT TREAT. SPEC.	DRAWN
			CHECKED
			FINAL APPROVAL
	FINISH & SPEC. NO.	ELEC. DES. APP.	MECH. DES. APP.
			PL253

UNLESS OTHERWISE SPECIFIED  
 DIMENSIONS ARE IN INCHES AND INCLUDE  
 FINISHES  
 TOLERANCES

DRAWN: [Signature] 12/1/66  
 CHECKED: [Signature] 1/29/66  
 FINAL APPROVAL: [Signature]



## APPLICATION

QTY MODEL USED ON ASSY NO.

STANDARD

LTR

DESCRIPTION

REVISIONS

DATE

E.M.N.NO

DRAFT

CHKD

APPD

X EXPERIMENTAL RELEASE

B ORIGINAL RELEASE

C.V.

CV

## SPECIFICATIONS:

SERIES: QDM  
 NO OF CONTACTS: ONE  
 TYPE OF CONTACT: MALE  
 DIELECTRIC: TEFLON

ELECTRICAL DATA:  
 MAX PEAK OPR. VOLT: 500 VOLTS  
 FREQ. LIMIT: 10,000 MHZ  
 NOMINAL IMPEDANCE: 70 OHMS

CABLE ACCOMMODATIONS:  
 TYPE: RG59/U, RG62/U

MATING ACCOMMODATIONS:  
 TYPE: QDM

MATERIAL:  
 EXTERNAL PARTS: BRASS  
 CONTACT: BERYLLIUM COPPER  
 GASKET: SILICONE RUBBER

FINISH:  
 EXTERNAL PARTS: SILVER PLATE, RHODIUM FINISH  
 CONTACT: SILVER PLATE, GOLD FLASH

PANEL:  
 MAX THICKNESS: NONE

**PURCHASING NOTE:** VENDOR MUST INCLUDE THE FOLLOWING INFORMATION WHEN SHIPPING THIS ITEM TO TMC

1. AN OUTLINE DRAWING OR ILLUSTRATION FROM CATALOG SHOWING ALL PERTINENT DIMENSIONS AND TOLERANCES.

2. ELECTRICAL AND/OR MECHANICAL SPECIFICATIONS AS SHOWN IN THEIR CATALOGS

UNLESS OTHERWISE SPECIFIED  
 DIMENSIONS ARE IN INCHES  
 AND INCLUDE CHEMICALLY APPLIED  
 OR PLATED FINISHES

DECIMALS FRACTIONS  
 .X ± .05 TOLS. 1/64  
 .XX ± .01 ANGLES  
 .XXX ± .005 0°-30°

MATERIAL

FINISH

S401-70 (3942)

REQ'D ITEM PART NUMBER DESCRIPTION SYM.

A. MARTINENGO LIST OF MATERIAL

FINAL APPROVAL DATE

MECH. DES DATE

ELECT. DES. DATE

CHECKED DATE

DRAWN DATE

THE TECHNICAL MATERIEL CORP.

MAMARONECK, NEW YORK

CONNECTOR, PLUG

**NOTICE TO PERSONS RECEIVING THIS DRAWING**  
 THE TECHNICAL MATERIEL CORPORATION claims proprietary right in the material disclosed hereon. This drawing is issued in confidence for engineering information only and may not be reproduced or used to manufacture anything shown hereon without permission from THE TECHNICAL MATERIEL CORPORATION to the user. This drawing is loaned for mutual assistance and is subject to recall at any time.

SIZE

A

CODE IDENT. NO.

82679

DWG NO.

PL 255

ISSUE

SCALE

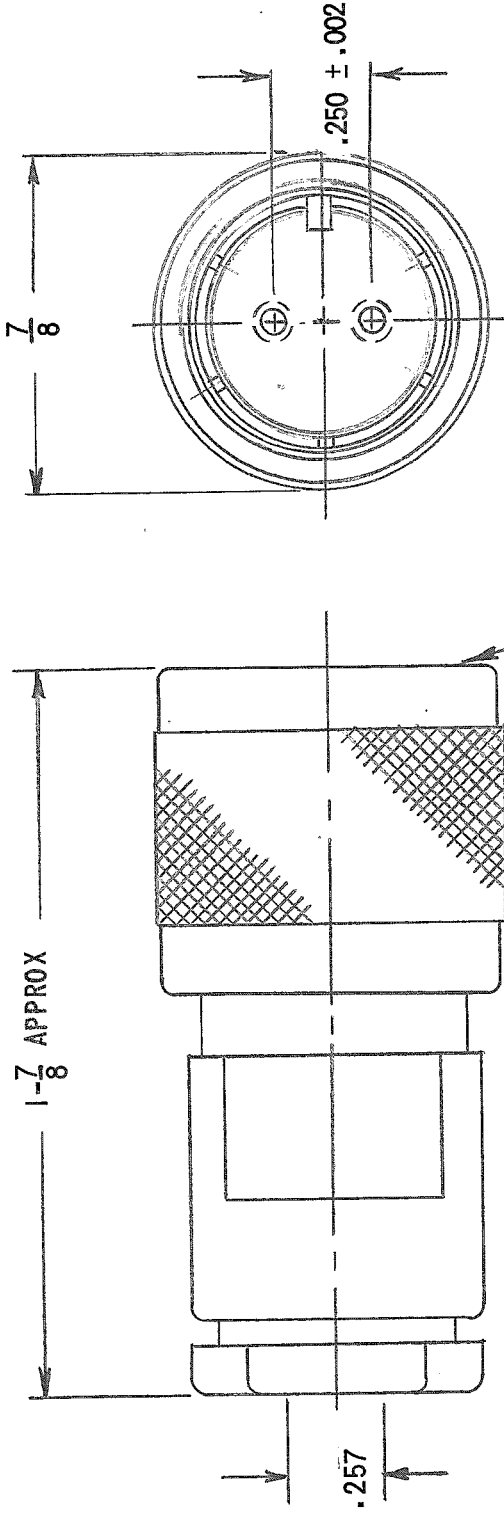
SHEET

OF

APPLICATION

REVISIONS

QTY	MODEL USED ON	ASSY NO.	LTR	DESCRIPTION	DATE	E.M.N.NO	DRAFT	CHKD	APPD
	STD		X	EXP. RELEASE	1.17.68	+	ASG.		
			Ø	ORIGINAL RELEASE	8/26/69		W		

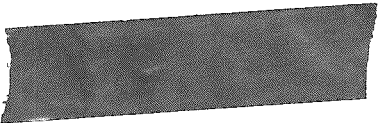


**CABLE:** RG108/U & RG108A/U  
**MATERIAL:** ALL METAL PARTS: BRASS  
 GASKETS: SILICONE OR SYNTHETIC RUBBER  
 DIELECTRIC: REXOLITE  
**FINISH:** ALL METAL PARTS: 0.0002" - 0.0003"  
 SILVER PLATING

UNLESS OTHERWISE SPECIFIED DIMENSIONS ARE IN INCHES AND INCLUDE CHEMICALLY APPLIED OR PLATED FINISHES		REQ'D	ITEM	PART NUMBER	DESCRIPTION	SYM.
DECIMALS		A. MARTINENGO LIST OF MATERIAL				
FRACTIONS		THE TECHNICAL MATERIEL CORP.				
1/64		MAMARONECK, NEW YORK				
X ± .05	TOLS.	MATERIAL		PLUG, CONNECTOR TWIN UHF		
.XX ± .01	ANGLES	FINISH		SIZE CODE IDENT. NO. DWG NO.		
.XXX ± .005	Ø° - .30°	S401-70 (3410)		A 82679		
MATERIAL		FINAL APPROVAL		SCALE 2:1		
FINISH		MECH. DES		OF SHEET		
		ELECT. DES.		OF		
		CHECKED		ISSUE		
		DRAWN		Ø		

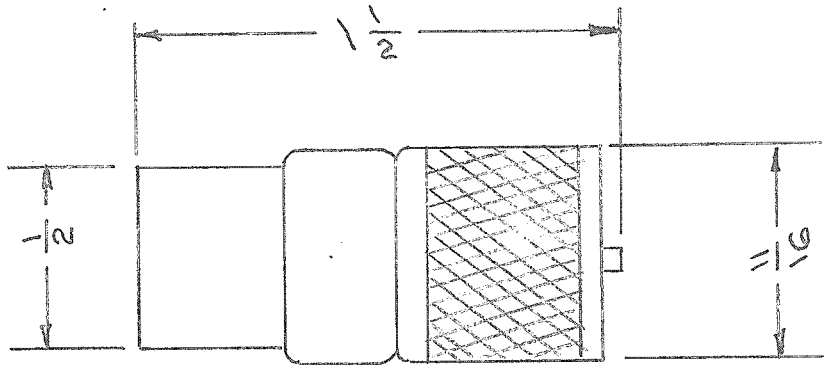
**NOTICE TO PERSONS RECEIVING THIS DRAWING**  
 THE TECHNICAL MATERIEL CORPORATION claims proprietary right in the material disclosed hereon. This drawing is issued in confidence for engineering information only and may not be reproduced or used to manufacture anything shown hereon without permission from THE TECHNICAL MATERIEL CORPORATION to the user. This drawing is loaned for mutual assistance and is subject to recall at any time.

# STANDARD DRAWING



REQ. PER UNIT	USED ON			PL-259
	MODEL	ASS'Y. NO.	DATE	

FOR USE WITH CABLES  
RG-8, 9, 10, 11, 12, 13/U, 63, 65



INSULATION: MICA FILLED BAKELITE

MATING JACK - 50-239

REF: AMPHENOL 83-15P

ISSUE	ITEM	CHANGED FROM	DATE	CH. NO.	DRAFTS	CHECKER	ENG. APP.	REQ.	ITEM	PART NO.	DESCRIPTION	SYMBOL	
											THE TECHNICAL MATERIEL CORP. MAMARONECK. NEW YORK		
										STOCK SIZE	PLUG - NAVY TYPE - 49190		
										BASS	SIGNAL CORP TYPE - PL-259		
										MATERIAL			
											<div style="display: flex; justify-content: space-between;"> <span>JA</span> <span>W</span> <span>A. J. J.</span> </div>		
TOLERANCES								SCALE:					
DEC. DIM. ± FRAC. DIM. ± ANGULAR DIM. ±								MAXIMUM ALLOWABLE TOLERANCES HAVE BEEN DETERMINED AND ANY DEVIATIONS WILL BE CAUSE FOR REJECTION. REMOVE ALL BURRS AND SHARP EDGES					
								TYPE & TEMPER		HEAT TREAT. SPEC.	DRAWN	CHECKED	FINAL APPROVAL
								SILVER PLATED			AMB		PL-259
								FINISH & SPEC. NO.		ELEC. DES. APP.	MECH. DES. APP.		

IF IT IS FOUND DESIRABLE TO CHANGE ANY TOLERANCE OR OTHER DETAIL SPECIFIED ON THIS DRAWING NOTIFY THE PURCHASER PROMPTLY.

# STANDARD DRAWING

PL-274 B  
(UG-363/U)

MAXIMUM ALLOWABLE TOLERANCES HAVE BEEN DETERMINED AND DEVIATIONS WILL BE CAUSE FOR REJECTION.  
REMOVE ALL BURRS AND SHARP EDGES

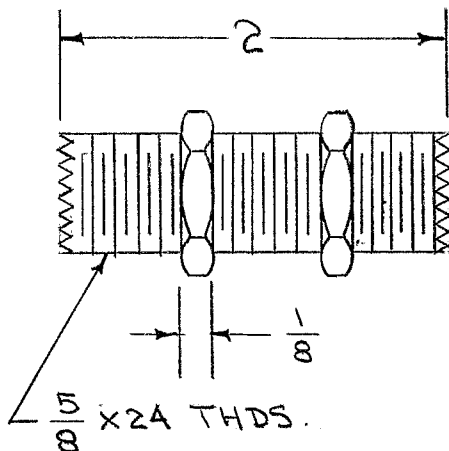
USED ON

MODEL

PROJECT NO.

ASS'Y. NO.

DATE



DOUBLE END BRONZE SLEEVE CONTACT.  
BRASS SHELL. SLEEVE & SHELL  
SILVER PLATED.  
POLYSTYRENE INSERT  
NUTS ARE ALUMINUM.

NOTE - PL-274 & UG-363/U  
ARE IDENTICAL. USE  
EITHER NUMBER

REF: AMERICAN PHENOLIC CORP. No. 83-1F

REQ.	ITEM	PART NO.	DESCRIPTION			SYMBOL
		#	THE TECHNICAL MATERIEL CORP.			
		STOCK SIZE	MAMARONECK, NEW YORK			
		#	ADAPTER, BULK HEAD			
		MATERIAL	WEIGHT PER PC.			
B	1	INSERT WAS TEFLON	6/11/6	2	QRP	A.J.J.
A	1	INSERT WAS POLYSTYRENE	9/1/54	1	C.D.D.	A.J.J.
ISSUE	ITEM	CHANGED FROM	DATE	CN. NO.	DRAFTS CHECKER	ENG. APP.
TOLERANCES			SCALE #			
ALL OTHERS	DEC. DIM. ± FRAC. DIM. ± ANGULAR DIM. ±		DRILL, PUNCH, COMMERCIAL STOCK SIZES AND MANUFACTURERS TOLERANCES ARE NOT INCLUDED.			
		TYPE & TEMPER	DRAWN		ELE& DES. APP.	MECH. DES. APP.
		HEAT TREAT. SPEC.	CHECKED		FINAL APPROVAL	
		FINISH & SPEC. NO.			PL-274 B (UG-363/U)	

APPLICATION

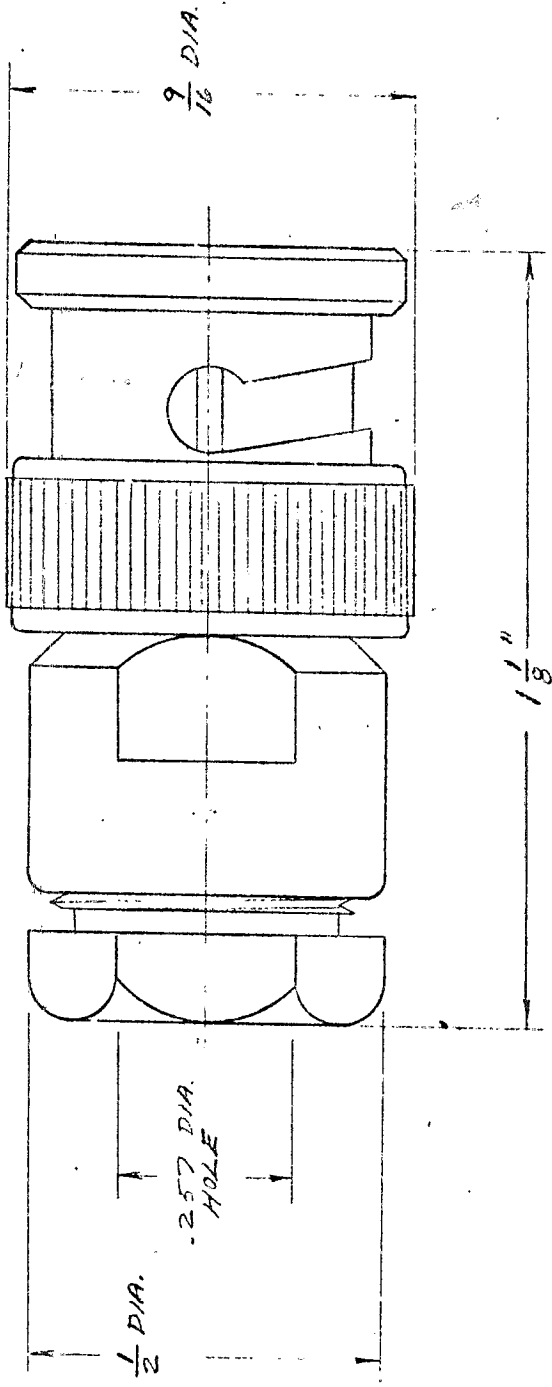
REVISIONS

QTY	MODEL USED ON	ASS'Y NO.	LTR	DESCRIPTION	DATE	E.M.N.NO	DRAFT	CHKD	APPD
	SW477	A5600	Ø	ORIGINAL RELEASE	6-20-74		DV		

Series: BNC 70  
 No. of Contacts: one  
 Type of Contacts: male  
 Dielectric: Teflon  
 Cable accomodation: RG-59, 59A, 59B/U  
 Max. peak Opr. Voltage: 500 volts  
 Nominal impedance: 70 ohms

Material: All metal parts: brass, silver plated and rhodium flashed  
 Contact: Brass, silver plated and gold flashed  
 Gaskets: Silicone rubber  
 Insulator: Teflon

MATES WITH JJ354



UNLESS OTHERWISE SPECIFIED DIMENSIONS ARE IN INCHES AND INCLUDE CHEMICALLY APPLIED OR PLATED FINISHES

DECIMALS FRACTIONS  
 .X ± .05 TOLS. 1/64  
 .XX ± .01 ANGLES  
 .XXX ± .005 0° - 30'

MATERIAL

FINISH

S401-70 (#4162)

REQ'D ITEM	PART NUMBER	DESCRIPTION	SYM.
LIST OF MATERIAL			
FINAL APPROVAL	DATE	<b>THE TECHNICAL MATERIEL CORP.</b> MAMARONECK, NEW YORK  PLUG, BNC 70 OHM	
MECH. DES.	DATE		
ELECT. DES.	DATE		
CHECKED	DATE		
DRAWN	DATE		

NOTICE TO PERSONS RECEIVING THIS DRAWING  
 THE TECHNICAL MATERIEL CORPORATION claims proprietary right in the material disclosed hereon. This drawing is issued in confidence for engineering information only and may not be reproduced or used to manufacture anything shown hereon without permission from THE TECHNICAL MATERIEL CORPORATION to the user. This drawing is loaned for mutual assistance and is subject to recall at any time.

SIZE <b>A</b>	CODE IDENT. NO. <b>82679</b>	DWG NO. PL 289	ISSUE 
SCALE	SHEET	OF	

REQ. PER UNIT	USED ON			PL 290	Ø
	MODEL	ASS'Y. NO.	DATE		

SPECIFICATIONS

SERIES : LC

NO. OF CONTACTS : ONE (1)

TYPE OF CONTACT : FEMALE (CAPTIVATED)

DIELECTRIC : TEFLON

ELECTRICAL DATA

MAX. PEAK OPR. VOLT : 5000V

FREQ. LIMIT : 10,000 MHZ

NOMINAL IMPEDANCE : 75 OHMS

CABLE ACCOMODATIONS

TYPES : RG 11

MATERIAL

EXTERNAL PARTS : BRASS

MALE CONTACT : BRASS

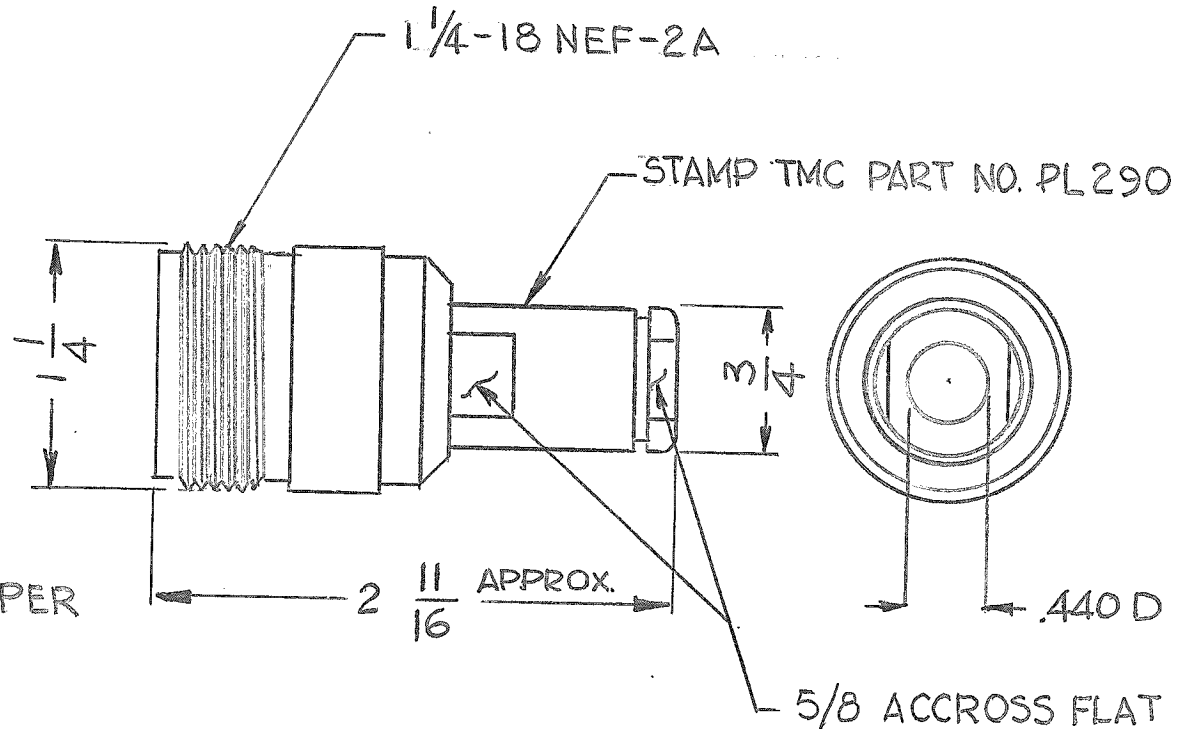
FEMALE CONTACT : BERYLLIUM COPPER

GASKET : SILICONE RUBBER

FINISH

EXTERNAL PARTS : SILVER PLATE

CONTACT : SILVER PLATE



REQ.	ITEM	PART NO.	DESCRIPTION			SYMBOL	
			TMC INDUSTRIAL CORP. MAMARONECK, NEW YORK				
			RECEPTACLE, CONNECTOR				
			LC (F) TO CABLE RG / U				
Ø	ORIGINAL RELEASE!	9/2/75					
ISSUE	ITEM	CHANGED FROM	DATE	CH. NO.	DRAFTS	CHECKER	ENG. APP.
TOLERANCES			SCALE: S401-70				
DEC. DIM. ±			MAXIMUM ALLOWABLE TOLERANCES HAVE BEEN DETERMINED AND ANY DEVIATIONS WILL BE CAUSE FOR REJECTION. REMOVE ALL BURRS AND SHARP EDGES				
FRAC. DIM. ±							
ANGULAR DIM. ±							
FINISH & SPEC. NO.		ELEC. DES. APP.	MECH. DES. APP.	PL 290			Ø

APPLICATION

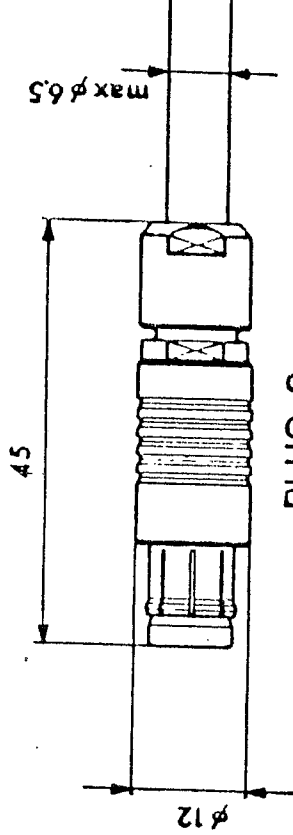
REVISIONS

QTY	MODEL USED ON	ASSY NO.	LTR	DESCRIPTION	DATE	E.M.N.NO	DRAFT	CHKD	APPD
-----	---------------	----------	-----	-------------	------	----------	-------	------	------

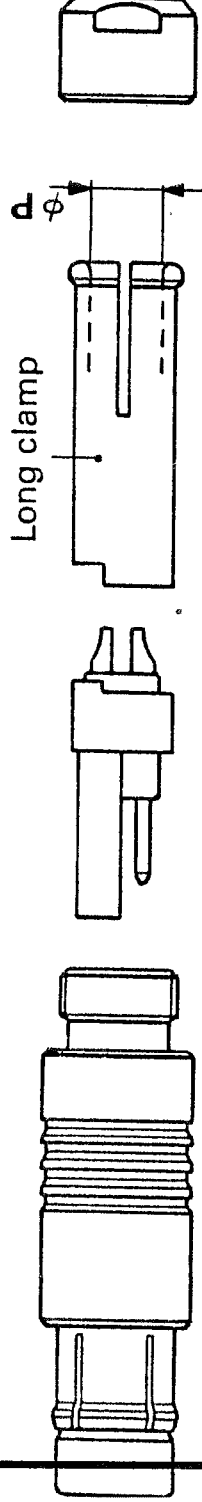
1 MMX 4 BMA 568

MATES / JJ-366

RUBBER SLEVE MFG PN  
103,00,665.



PLUG S



Long clamp

MFG PN S103A054U5.2

S401-536

REQ'D ITEM	PART NUMBER	DESCRIPTION	SYM.
LIST OF MATERIAL			
THE TECHNICAL MATERIEL CORP. MAMARONECK, NEW YORK			
FINAL APPROVAL	DATE		
MECH. DES.	DATE		
ELECT. DES.	DATE		
CHECKED	DATE		
DRAWN	DATE		

PLUG, RECP.

SIZE	CODE IDENT. NO.	DWG NO.	ISSUE
A	82679	PL-292	

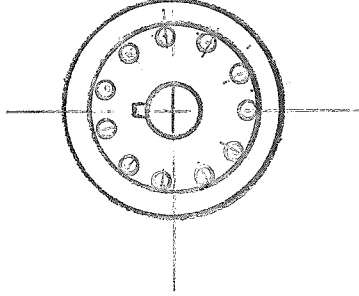
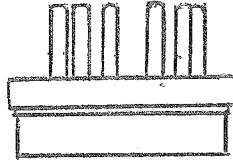
NOTICE TO PERSONS RECEIVING THIS DRAWING  
THE TECHNICAL MATERIEL CORPORATION claims proprietary right in the material disclosed hereon. This drawing is issued in confidence for engineering information only and may not be reproduced or used to manufacture anything shown hereon without permission from THE TECHNICAL MATERIEL CORPORATION to the user. This drawing is loaned for mutual assistance and is subject to recall at any time.

SCALE	SHEET	OF
-------	-------	----

APPLICATION

REVISIONS

QTY	MODEL USED ON	ASS'Y NO.	LTR	DESCRIPTION	DATE	E.M.N.NO	DRAFT	CHKD	APPD
	574415020								



MFG:  
AMPHENOL 86-CP-11

UNLESS OTHERWISE SPECIFIED  
DIMENSIONS ARE IN INCHES  
AND INCLUDE CHEMICALLY APPLIED  
OR PLATED FINISHES

DECIMALS FRACTIONS  
.X ± .05 1/64  
.XX ± .01 TOLS. ANGLES  
.XXX ± .005 0°-30'

MATERIAL

FINISH

REQ'D	ITEM	PART NUMBER	DESCRIPTION	SYM.
LIST OF MATERIAL				
FINAL APPROVAL			DATE	
MECH. DES.			DATE	
ELECT. DES.			DATE	
CHECKED			DATE	
DRAWN	C.D.L.		DATE 3-22-70	
THE TECHNICAL MATERIEL CORP. MAMARONECK, NEW YORK			ISSUE	
CONNECTOR RECEPTACLE MALE 11 CONTACT			SIZE	
			CODE IDENT. NO.	
			A	82679
			DWG NO.	PL 293
			SCALE	1:1
			SHEET	OF

NOTICE TO PERSONS RECEIVING THIS DRAWING  
THE TECHNICAL MATERIEL CORPORATION claims proprietary right in the material disclosed hereon. This drawing is issued in confidence for engineering information only and may not be reproduced or used to manufacture anything shown hereon without permission from THE TECHNICAL MATERIEL CORPORATION to the user. This drawing is loaned for mutual assistance and is subject to recall at any time.