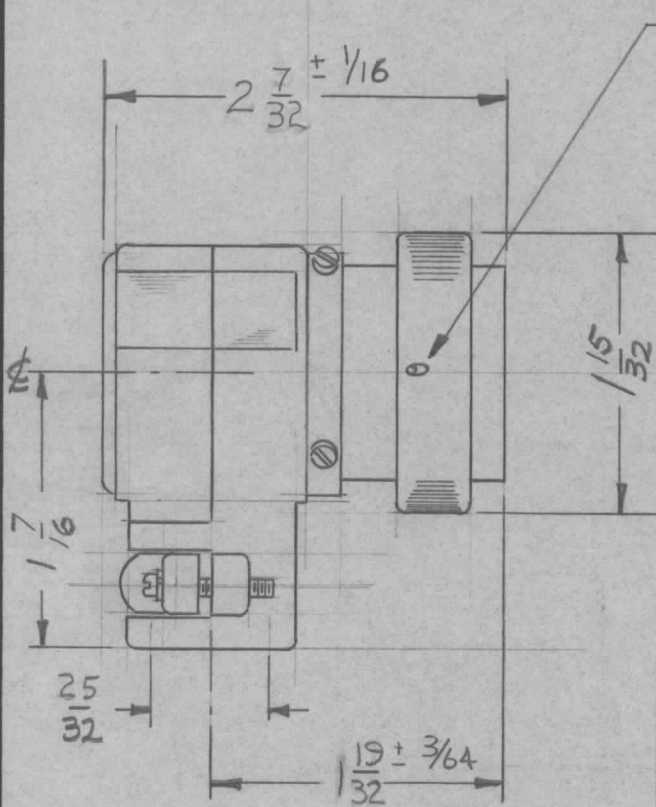
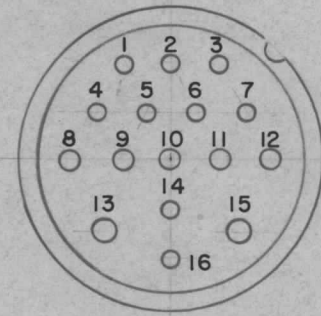
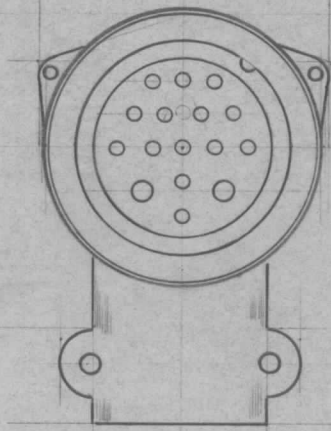


REQ. PER UNIT	USED ON			PL-186	B
	MODEL	ASS'Y. NO.	DATE		
3	RAK 11		4-15-60		



COUPLING NUT DRILLED AT 4 POINTS FOR SAFETY WIRE



INSERT ARRANGEMENT

SHELL ALUMINUM ALLOY CAD. PLATE  
 TEST VOLT - 1300 VRMS - 60 CPS  
 CONTACTS - 14 - #16 WIRE  
 1-12 INCL + 14 & 16  
 2 - #10 WIRE 13 & 15  
 CONTACT CURRENT RATING  
 #10 - 30 AMP  
 #16 - 10 AMP  
 CONTACTS - BRASS SILVER PLATED

REF: JJ-183 - 17 - TING

REQ.	ITEM	PART NO.	DESCRIPTION				SYMBOL
			<b>THE TECHNICAL MATERIEL CORP.</b>				
			MAMARONECK, NEW YORK				
			CONNECTOR, PLUG FEMALE				
			16 CONTACTS				
B			DIM. WERE $2 \frac{3}{32}, 2 \frac{1}{32}, 1 \frac{17}{32}$				7-2766 16647 RME <i>CB</i> <i>JC</i>
A	1		MFG. PART NO. WAS SK-C16-23C-5/8				11-4-60 3400 <i>MF</i> <i>DF</i>
ISSUE	ITEM	CHANGED FROM	DATE	CH. NO.	DRAFTS	CHECKER	ENG. APP.
TOLERANCES			SCALE: S401-91 (SK-C16-23C-3/4)				
DEC. DIM. ± FRAC. DIM. ± ANGULAR DIM. ±			MAXIMUM ALLOWABLE TOLERANCES HAVE BEEN DETERMINED AND ANY DEVIATIONS WILL BE CAUSE FOR REJECTION. REMOVE ALL BURRS AND SHARP EDGES				
TYPE & TEMPER		HEAT TREAT. SPEC.	DRAWN	CHECKED	FINAL APPROVAL		
FINISH & SPEC. NO.		ELEC. DES. APP.	MECH. DES. APP.		PL-186 B		