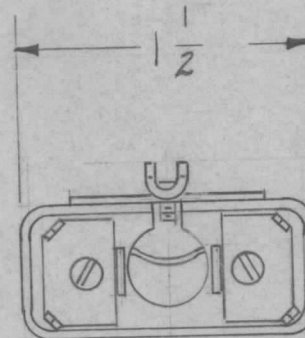
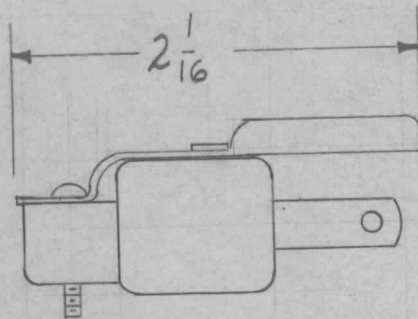
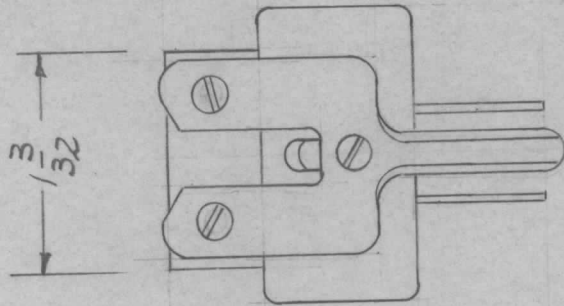


REQ. PER. UNIT	USED ON			PL-172	A
	MODEL	ASS'Y. NO.	DATE		
1	GPT 101C		4/9/59		



**NOT TO BE RELEASED
W/O AUTHORIZATION**

REDRAWN

For the following reasons:

1. TMC part drawing no. PL-172 was in direct conflict w/ Penta Lab part# PL-172.
2. Therefore, to avoid conflict w/ Penta Lab part nos. & TMC part nos. the dwg # PL-172 was changed to PL-218.

98074

REF. ARM # UP-121-M (GRAY BAR)

3 PRONG POLARIZED PLUG WITH REMOVEABLE GROUND CONNECTION.

								REQ.	ITEM	PART NO.	DESCRIPTION		SYMBOL				
											THE TECHNICAL MATERIEL CORP. MAMARONECK, NEW YORK						
											POLARIZED AC PLUG						
A	1	REDRAWN NOTE ADDED	11-30-61	5955	RLU												
ISSUE	ITEM	CHANGED FROM	DATE	CH. NO.	DRAFTS	CHECKER	ENG. APP.	MATERIAL									
TOLERANCES			SCALE:					TYPE & TEMPER		HEATTREAT.SPEC.	DRAWN	CHECKED	FINAL APPROVAL				
DEC. DIM. ±			MAXIMUM ALLOWABLE TOLERANCES HAVE BEEN DETERMINED AND ANY DEVIATIONS WILL BE CAUSE FOR REJECTION. REMOVE ALL BURRS AND SHARP EDGES										PL-172				
AC. DIM. ±																A	
ANGULAR DIM. ±																	
								FINISH & SPEC. NO.		ELEC. DES. APP	MECH. DES. APP						