

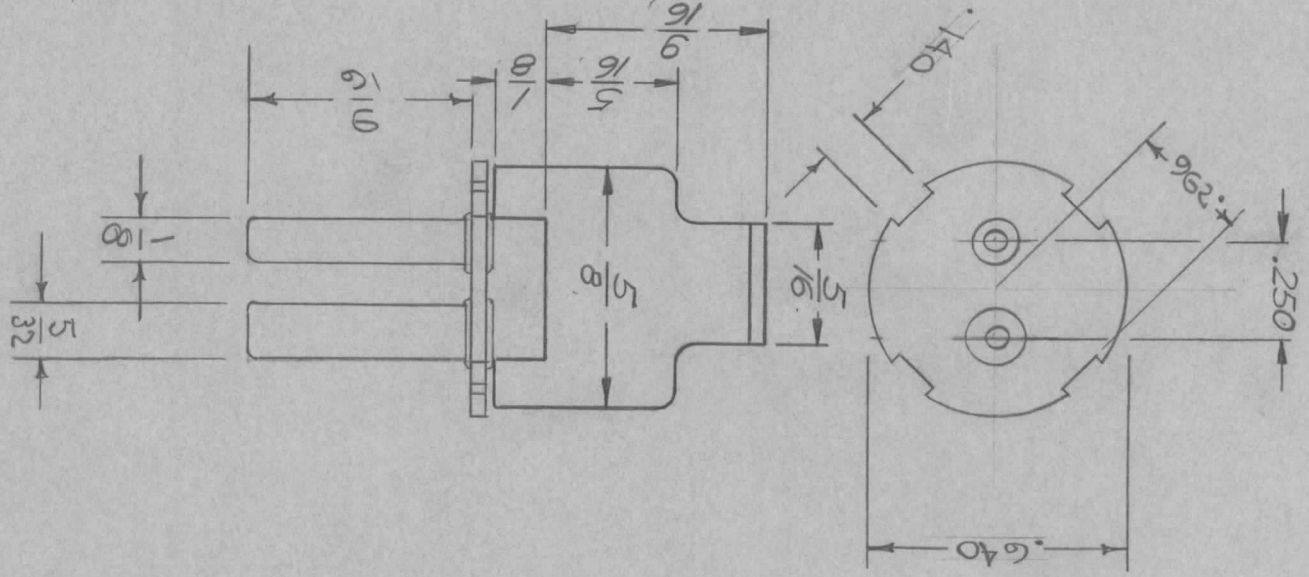
IF IT IS FOUND DESIRABLE TO CHANGE ANY TOLERANCE OR OTHER DETAIL SPECIFIED ON THIS DRAWING NOTIFY THE PURCHASER PROMPTLY.

MAXIMUM ALLOWABLE TOLERANCES HAVE BEEN DETERMINED AND DEVIATIONS WILL BE CAUSE FOR REJECTION. REMOVE ALL BURRS AND SHARP EDGES

STANDARD DRAWING

REQ. PER UNIT	MODEL	PROJECT NO.	ASS'Y. NO.	DATE
---------------	-------	-------------	------------	------

USED ON
 PL-123 A



DIM. FOR REF. ONLY

SHELL REF. PL 124

REF: CINCH MFG. CO. CAT. NO. 2724, 11631

REQ. ITEM	PART NO.	DESCRIPTION	SYMBOL
-----------	----------	-------------	--------

THE TECHNICAL MATERIEL CORP.
 MAMARONECK, NEW YORK

STOCK SIZE
 MATERIAL
 WEIGHT PER PC.

TYPE & TEMPER
 DRAWN
 ELEC. DES. APP.
 MECH. DES. APP.

HEAT TREAT. SPEC.
 CHECKED
 FINAL APPROVAL

FINISH & SPEC. NO.
 PL-123 A

ISSUE ITEM	CHANGED FROM	DATE	CN. NO.	DRAFTS CHECKER	ENG. APP.
A	REV. TO INCL. PL 124	12/26/53	19151	K.H. FLO	F.B. J

TOLERANCES

DEC. DIM. ±
 FRAC. DIM. ±
 ANGULAR DIM. ±

TOLERANCES ARE NOT INCLUDED.
 SIZES AND MANUFACTURERS
 DRILL, PUNCH, COMMERCIAL STOCK