

IF IT IS FOUND DESIRABLE TO CHANGE ANY TOLERANCE OR OTHER DETAIL SPECIFIED ON THIS DRAWING NOTIFY THE PURCHASER PROMPTLY.

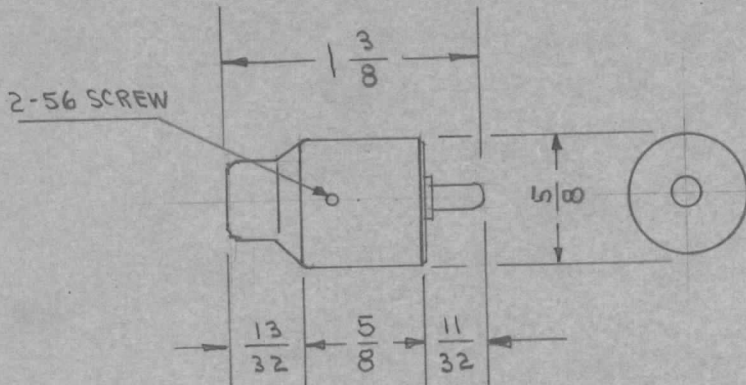
STANDARD DRAWING

PL-103

MAXIMUM ALLOWABLE TOLERANCES HAVE BEEN DETERMINED AND DEVIATIONS WILL BE CAUSE FOR REJECTION. REMOVE ALL BURRS AND SHARP EDGES

USED ON

MODEL	PROJECT NO.	ASS'Y. NO.	DATE
TMC NO.	CAT. NO.	NUMBER PRONGS	PRONG ARRANGEMENT
PL-103-1	801 PS	1	
PL-103-2	802 PS	2	
PL-103-3	803 PS	3	
PL-103-4	804 PS	4	
PL-103-5	805 PS	5	



DIMENSIONS FOR REFERENCE ONLY

NOTE: FOR MATING RECEPTACLE SEE JJ-102.

REF.: ALDEN PRODUCTS CO.

REQ.	ITEM	PART NO.	DESCRIPTION	SYMBOL
//			THE TECHNICAL MATERIEL CORP. MAMARONECK, NEW YORK	
STOCK SIZE			CONNECTOR, SHIELDED	
//		//		
MATERIAL		WEIGHT PER PC.		
//		//		
TYPE & TEMPER			C.D.D. 8-18-52	MB 8/21/52
//			DRAWN	ELEC. DES. APP.
//			HEAT TREAT. SPEC.	MECH. DES. APP.
//			FINISH & SPEC. NO.	
			CHECKED	FINAL APPROVAL
				PL-103

ISSUE	ITEM	CHANGED FROM	DATE	CN. NO.	DRAFTS	CHECKER	ENG. APP.
TOLERANCES <td colspan="2">SCALE</td> <td colspan="4">FULL</td>		SCALE		FULL			
ALL OTHERS	DEC. DIM. ± FRAC. DIM. ± ANGULAR DIM. ±	DRILL, PUNCH, COMMERCIAL STOCK SIZES AND MANUFACTURERS TOLERANCES ARE NOT INCLUDED.					