

IF IT IS FOUND DESIRABLE TO CHANGE ANY TOLERANCE OR OTHER DETAIL SPECIFIED ON THIS DRAWING NOTIFY THE PURCHASER PROMPTLY.

STANDARD DRAWING

PL-10005

MAXIMUM ALLOWABLE TOLERANCES HAVE BEEN DETERMINED AND DEVIATIONS WILL BE CAUSE FOR REJECTION. REMOVE ALL BURRS AND SHARP EDGES

USED ON

MODEL

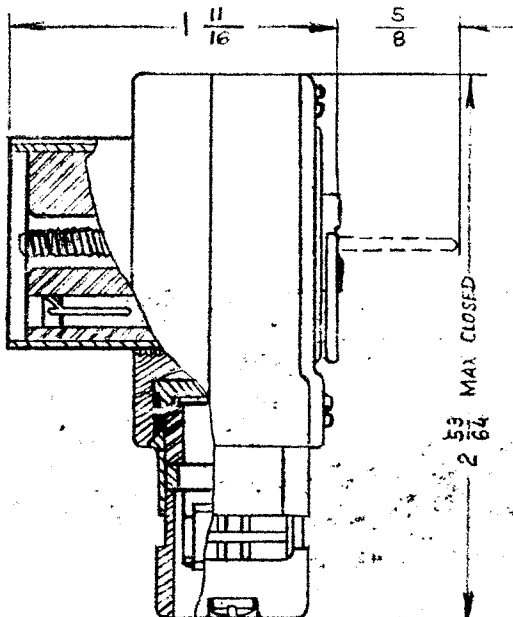
PROJECT NO.

ASS'Y. NO.

DATE

FEB 22/60

TMC PART NO.	MFR NO.	SHELL SIZE	NO. OF CONTACTS	CURRENT RATING	VOLTAGE RATING	TYPE	MATING RECEPTACLE
PL-10005-1	164-201-2P (15)	SMALL NO. 20	2 NO. 12	35 AMP	1000 V RMS	MALE	JJ-10002-2
PL-10005-2	164-201-2S (15)	SMALL NO. 20	2 NO. 12	35 AMP	1000 V RMS	FEMALE	JJ-10002-1



TMC PART NO.	CABLE CLAMP NO.	WILL TAKE CABLE OD OF	CABLE TYPE
PL-10005-1	15	.386 TO .468	RG-8/U TO RG-11/U
PL-10005-2	15	.386 TO .468	RG-8/U TO RG-11/U

AMPHENOL

REQ.	ITEM	PART NO.	DESCRIPTION	SYMBOL
			TMC (Canada) LIMITED OTTAWA ONTARIO	
		STOCK SIZE	CONNECTOR, PLUG	
		MATERIAL WEIGHT PER PC.	WATERPROOF, POWER	
		TYPE & TEMPER	MK	
		HEAT TREAT. SPEC.	JPC <i>et</i>	
		FINISH & SPEC. NO.	CHECKED	
			FINAL APPROVAL	
			PL-10005	

ISSUE	ITEM	CHANGED FROM	DATE	CN. NO.	DRAFTS	CHECKER	ENG. APP.
TOLERANCES			SCALE 1:1				
ALL OTHERS	DEC. DIM. ±	_____	DIMENSIONS IN INCHES UNLESS OTHERWISE SPECIFIED				
	FRAC. DIM. ±	_____	DRILL, PUNCH, COMMERCIAL STOCK SIZES AND MANUFACTURERS TOLERANCES ARE NOT INCLUDED.				
	ANGULAR DIM. ±	_____					