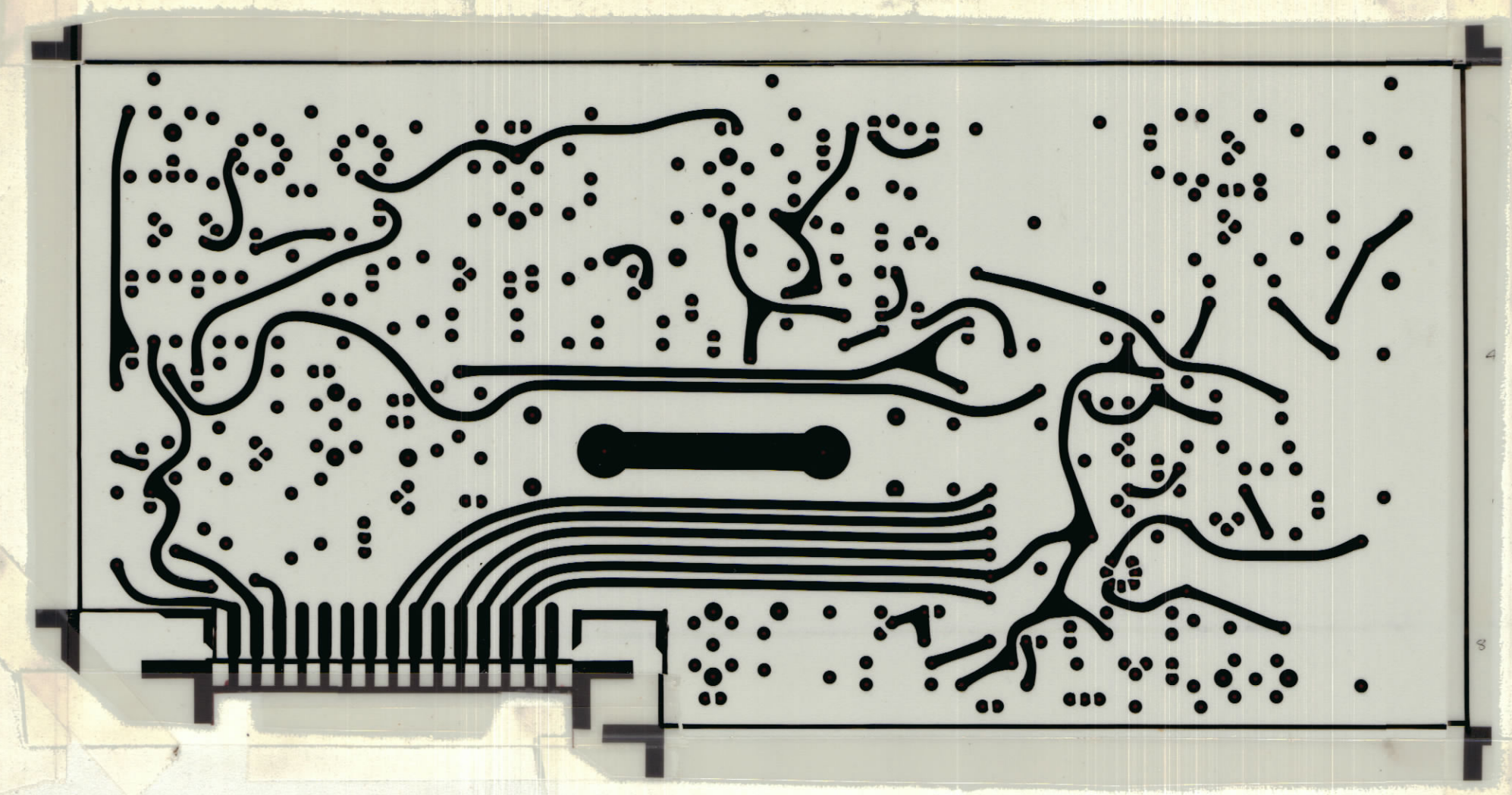


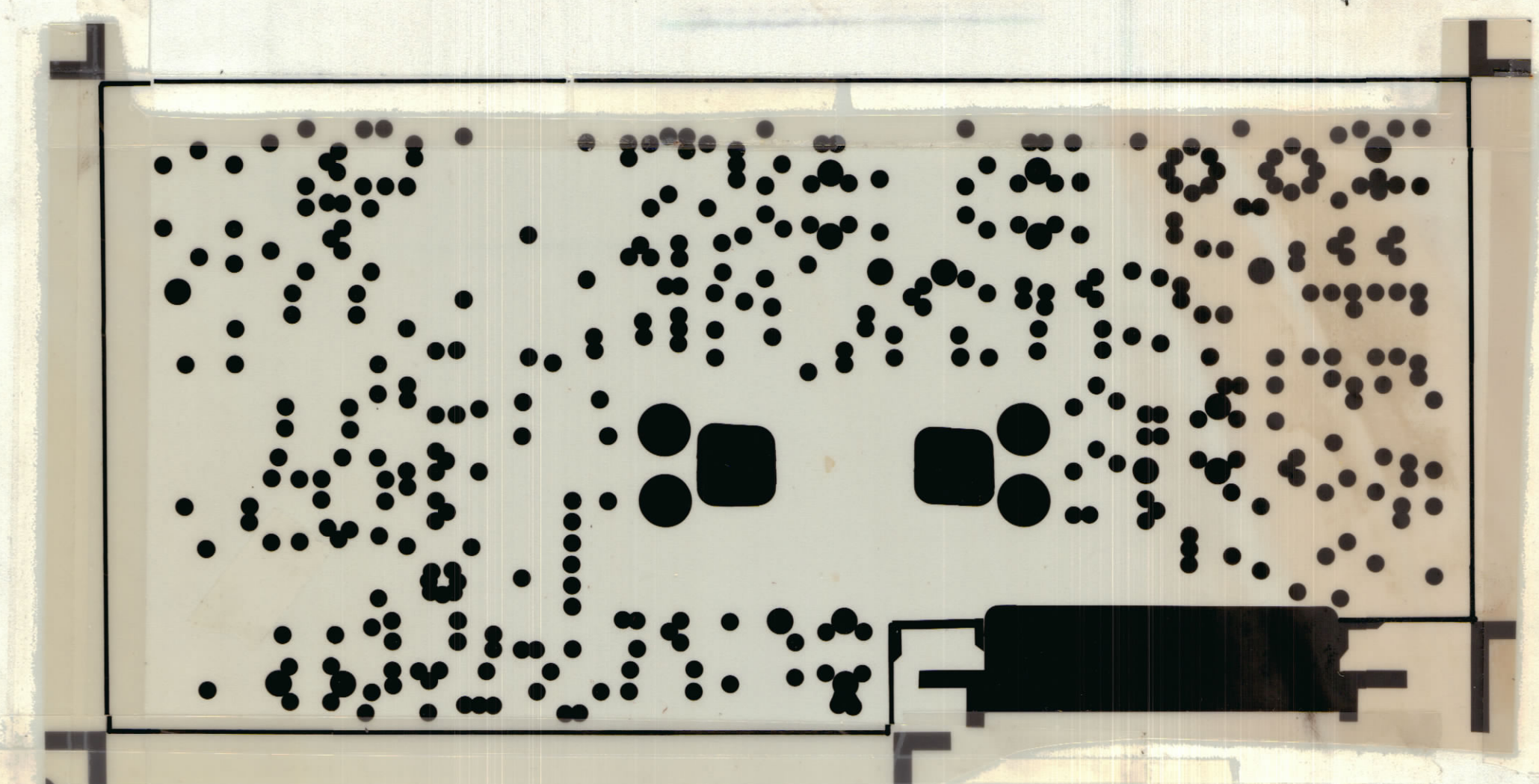
REVISIONS				DATE	APPROVED
E.M.N.O.	DRAFT	CHKD	ZONE	LTR	DESCRIPTION



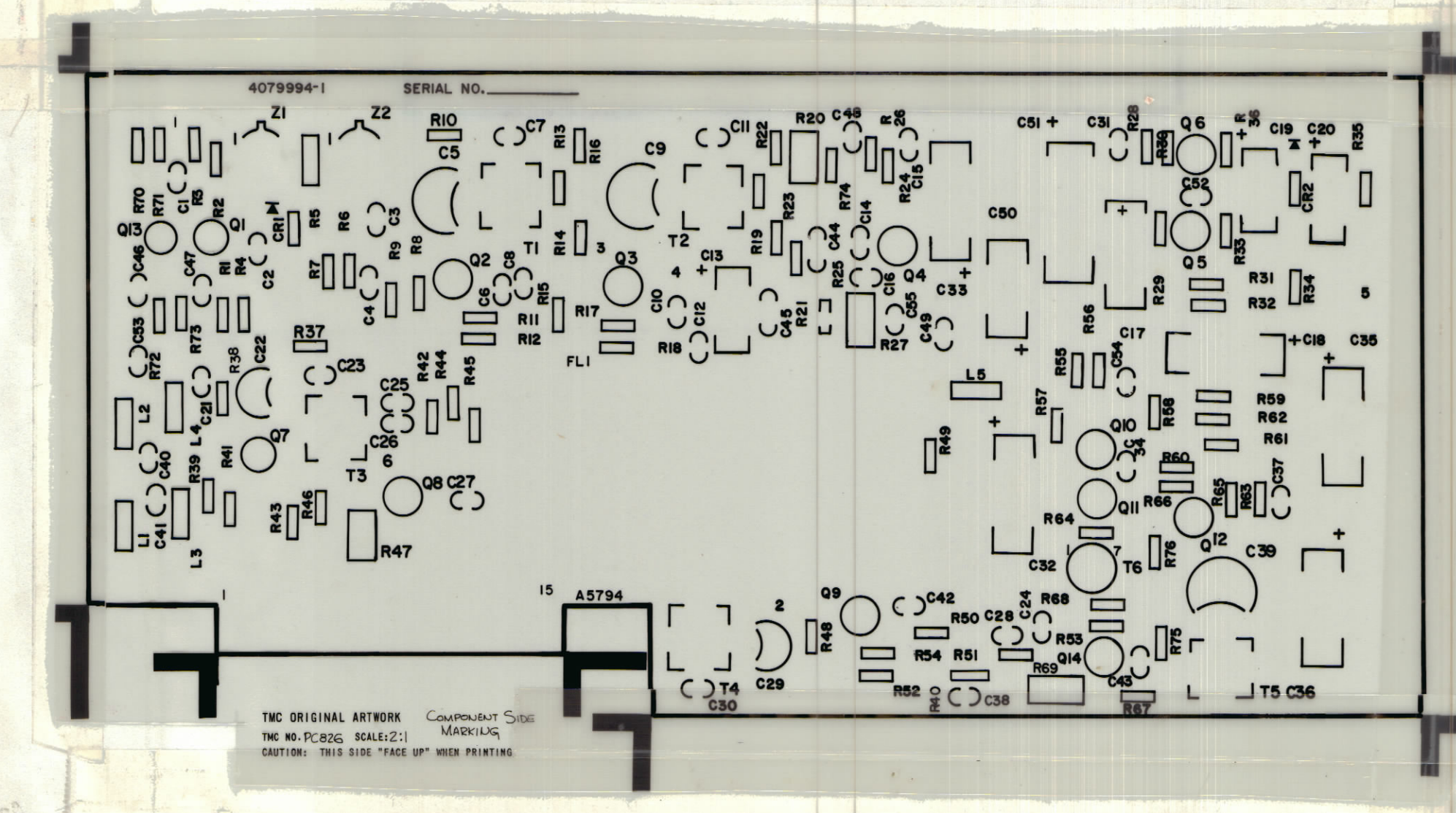
COMPONENT SIDE PC826-2



CIRCUIT SIDE PC826-3



SOLDER MASK PC826-5
(CIRCUIT SIDE)



MARKING PC826-4
(COMPONENT SIDE)

LOCKHEED SPECIAL		A5794
QTY / UNIT	MODEL USED ON	ASS'Y NO.
APPLICATION		
CODE		
<small>NOTICE TO PERSONS RECEIVING THIS DRAWING</small> <small>THE TECHNICAL MATERIEL CORPORATION claims proprietary right in the material disclosed hereon. This drawing is issued in confidence for engineering information only and may not be reproduced or used to manufacture anything shown hereon without permission from THE TECHNICAL MATERIEL CORPORATION to the user. This drawing is loaned for mutual assistance and is subject to recall at any time.</small>		

UNLESS OTHERWISE SPECIFIED DIMENSIONS ARE IN INCHES AND INCLUDE CHEMICALLY APPLIED OR PLATED FINISHES	
TOLERANCES ON	
DECIMALS	FRACTIONS
.X ± .05	± 1/64
.XX ± .01	ANGLES
.XXX ± .005	± 0° -30'

QTY. REQ.	ITEM	PART NO.	DESCRIPTION	SYMBOL
LIST OF MATERIAL				
FINAL APPROVAL		DATE		
MECH. DES.		DATE 11-25-81		
ELECT. DES.		DATE		
CHECKED		DATE		
DRAWN		DATE 11-25-81		
MATERIAL		SIZE CODE IDENT NO. DWG NO.		
FINISH		D 82679 PC826		
SCALE		SHEET 2 OF 2		

THE TECHNICAL MATERIEL CORP.
MAMARONECK, NEW YORK

CARRIER GENERATOR
PRINTED WIRING BOARD
REFERENCE NO. 4079994-1