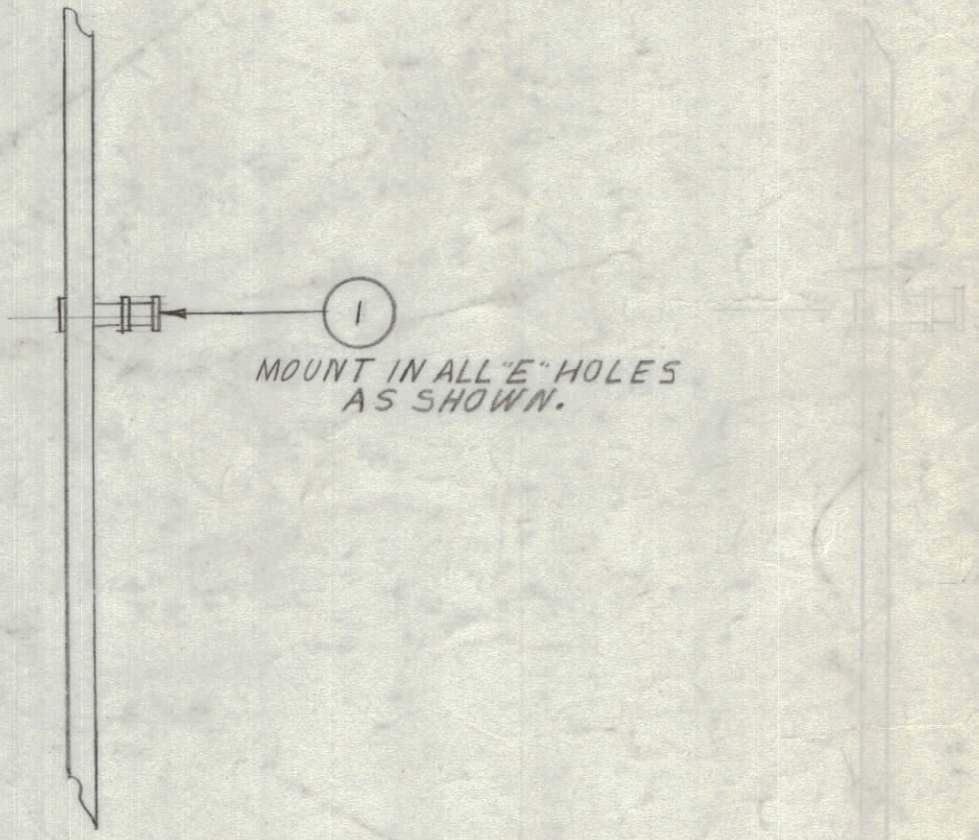
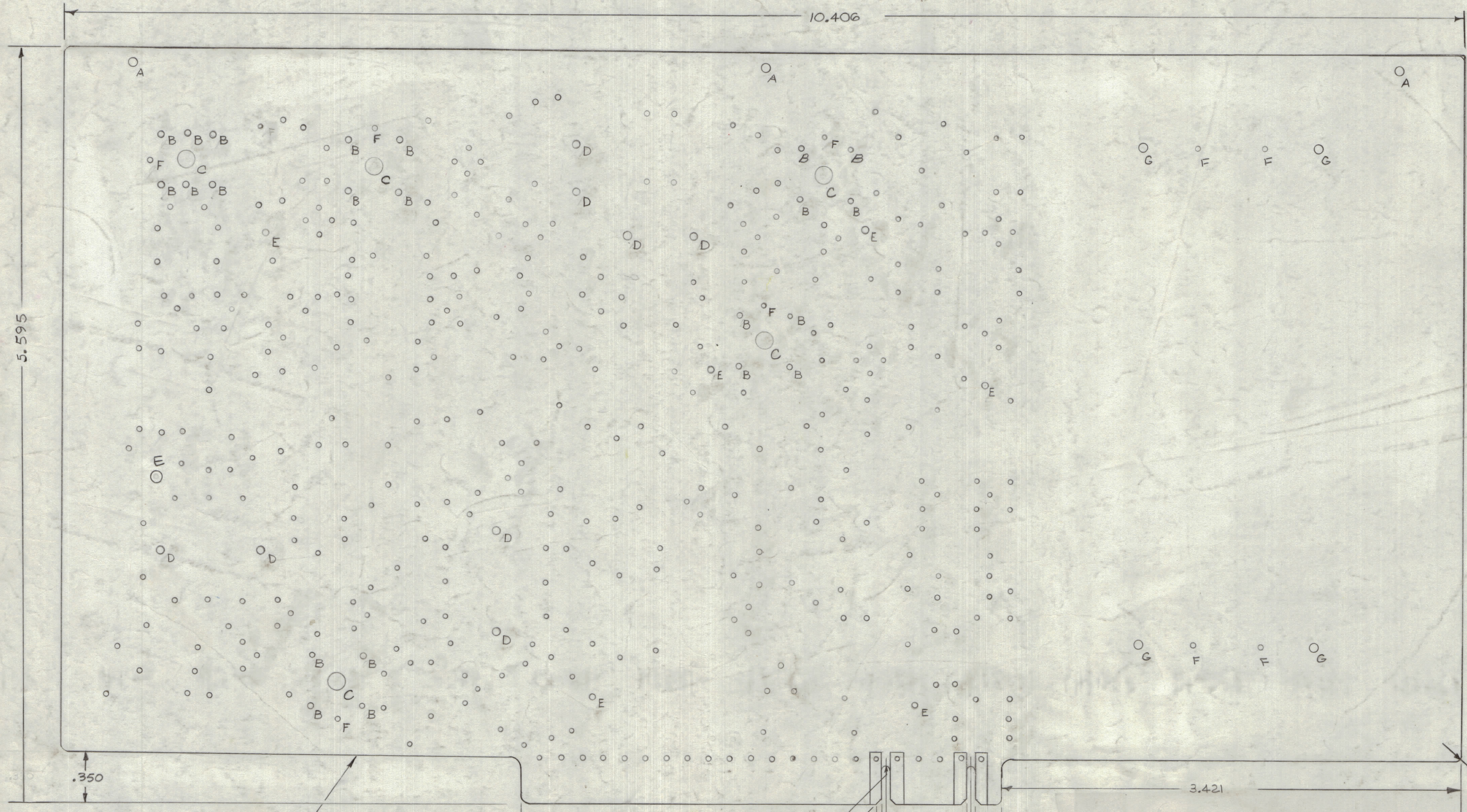


REVISIONS						
ZONE	SYM	DESCRIPTION	DATE	E.M.N. NO.	DRAFT	CHKD
	X	EXP RELEASE	5-13-65			
	Ø	ORIGINAL RELEASE FOR PRODUCTION	5-13-65			
A		4 F HOLES ADDED, FABRICATION NOTE REVISED	6-10-65	14226		
B		SEE SHEET ①, SIDE VIEW ADDED	7-14-65	14617		
C		SEE SHEET 1 OF 3	8-24-65	CC		
D		UNMARKED HOLES DELETED (SEE SHEET 3)	8-10-66	16238	C.D.L.	
E		SEE SHEETS 1 & 2	8-20-67	17895	C.D.L.	
F		1 (E) Hole Added (TE127-2)	11-28-71	20742		
G		ADD CHART INCL. .062 THICKNESS	5-10-78	21647	W.P.B.	



HOLE LEGEND		
HOLE	DESCRIPTION	REQ'D
A	9/64 DR. (.146 DIA.)	3
B	#53 DR. (.059 DIA.)	22
C	17/64 DR. (.265 DIA.)	5
D	7/64 DR. (.109 DIA.)	8
E	#46 DR. (.081 DIA.)	7
F	1/16 DR. (.062 DIA.)	9
G	3/16 DR. (.187 DIA.)	4
	UNMARKED #60 DR. .040 DIA	368

TMC PART No.	THICKNESS
PC209	.093 ± .0075
PC209-1	.062 ± .0062

**FABRICATION NOTE:**  
 TO BE MANUFACTURED IN ACCORDANCE WITH TMC SPEC. S-735, EXCEPT AS NOTED.  
 1. MATERIAL G-10 EPOXY GLASS LAMINATED 2 OUNCE COPPER CLAD BOTH SIDES. (SEE CHART FOR THICKNESS)  
 2. CONDUCTOR PATTERN SHALL BE SOLDER COATED AS PER PP.13.2.1  
 3. PLATING TO BE TIN-LEAD AS PER PP.13.2.2  
 4. HOLES TO BE PLATED THROUGH AS PER PP.11.4 EXCEPT FOR 3"A" HOLES.  
 5. EDGE BOARD CONNECTORS (FINGERS) SHALL BE GOLD PLATED AS PER PP.10.1.  
 6. KEY SLOTS TO BE DEBURRED.

REQ'D.	ITEM	PART NUMBER	DESCRIPTION	SYMBOL
7	1	TE-127-2	TERMINAL STUD	E

LIST OF MATERIAL	
MATERIAL	SEE NOTE
FINISH	THE TECHNICAL MATERIEL CORP. MAMARONECK, NEW YORK
TITLE	PRINTED CIRCUIT BOARD IF AMP
DRAWN	UNLESS OTHERWISE SPECIFIED DIMENSIONS ARE IN INCHES AND INCLUDE CHEMICALLY APPLIED OR PLATED FINISHES
CHECKED	DATE
DATE	DATE
ELECT. DES.	DATE
MECH. DES.	DATE
DATE	DATE
SHEET	3 OF 3
REV./LTR.	

QTY./UNIT	MODEL USED ON	ASSY. NO.
4	CMRA-1	A4240
SCALE	CODE	
2:1	A	

**NOTES**  
 THE CONTENTS OF THIS DRAWING ARE THE EXCLUSIVE PROPERTY OF THE TECHNICAL MATERIEL CORP. ITS UNAUTHORIZED USE OR REPRODUCTION IN WHOLE OR IN PART IS STRICTLY FORBIDDEN.

PC209 G