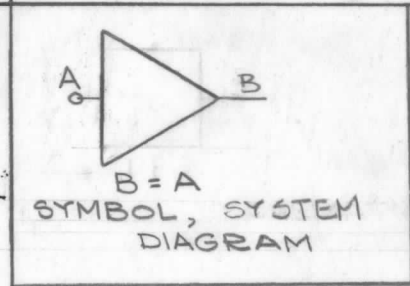


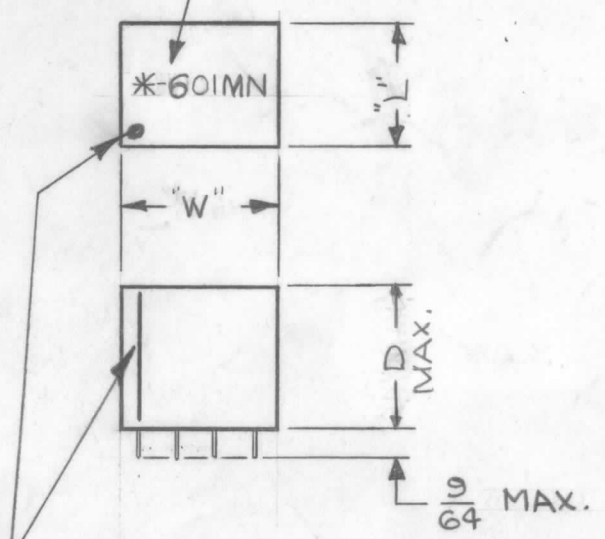
TMC PART NUMBER	MFG PART NUMBER	MFG TYPE NUMBER	RANGE	SIZE			SWITCHING CHARACTERISTICS	OPERATING TEMPERATURE
				"W"	"L"	"D"		
NW109	730B0056	BA11-1	100KC	.800	.630	.770	A or B	-35°C TO +65°C
NW109-11	730B0056	BA11-1-A	100KC	.800	.630	.770	A OR B	-35°C TO +85°C
NW109-21	730B0056	BA11-1-B	100KC	.800	.630	.460	A OR B	-35°C TO +85°C

REVISIONS						
SYM	DESCRIPTION	DATE	E.M.N. NO.	DRAFT	CHKD	APPD
X	EXPER. RELEASE	12-15-64	X			
XI	A & B INPUT UPDATED (CHART)	12-65	XI			
Ø	ORIGINAL RELEASE FOR PRODUCTION	1-14-65	Ø	ØL		
A	ON P/N CHART NW109 - WAS NW109-1	6/1/65	14145			
B	NW109-11/21 ADDED NOTE - DELETED (OPER. TEMP.)	6/29/65	14367	RV.V.		
C	REVISED PICTORIAL, NOTE ADDED	5/2/66	16184	HLA		
D	ON TITLE CHG "BUFFER" TO "NON-INVERTING"	7-26-66	16631	RME		
E	460 DIM. WAS .375 & MAX. ADDED TO "D" DIM	9-11-67	18484	H.G.		

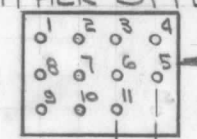
NW109



STAMP TMC PART NO. 3/32 HIGH BLACK GOTHIC.



PIN #1, IDENTIFICATION (EITHER STYLE OPTIONAL)



NOTE: PIN NO.'S. OPTIONAL WHEN IDENTITY OF PIN #1 IS INDICATED.

.200 GRID ON PINS

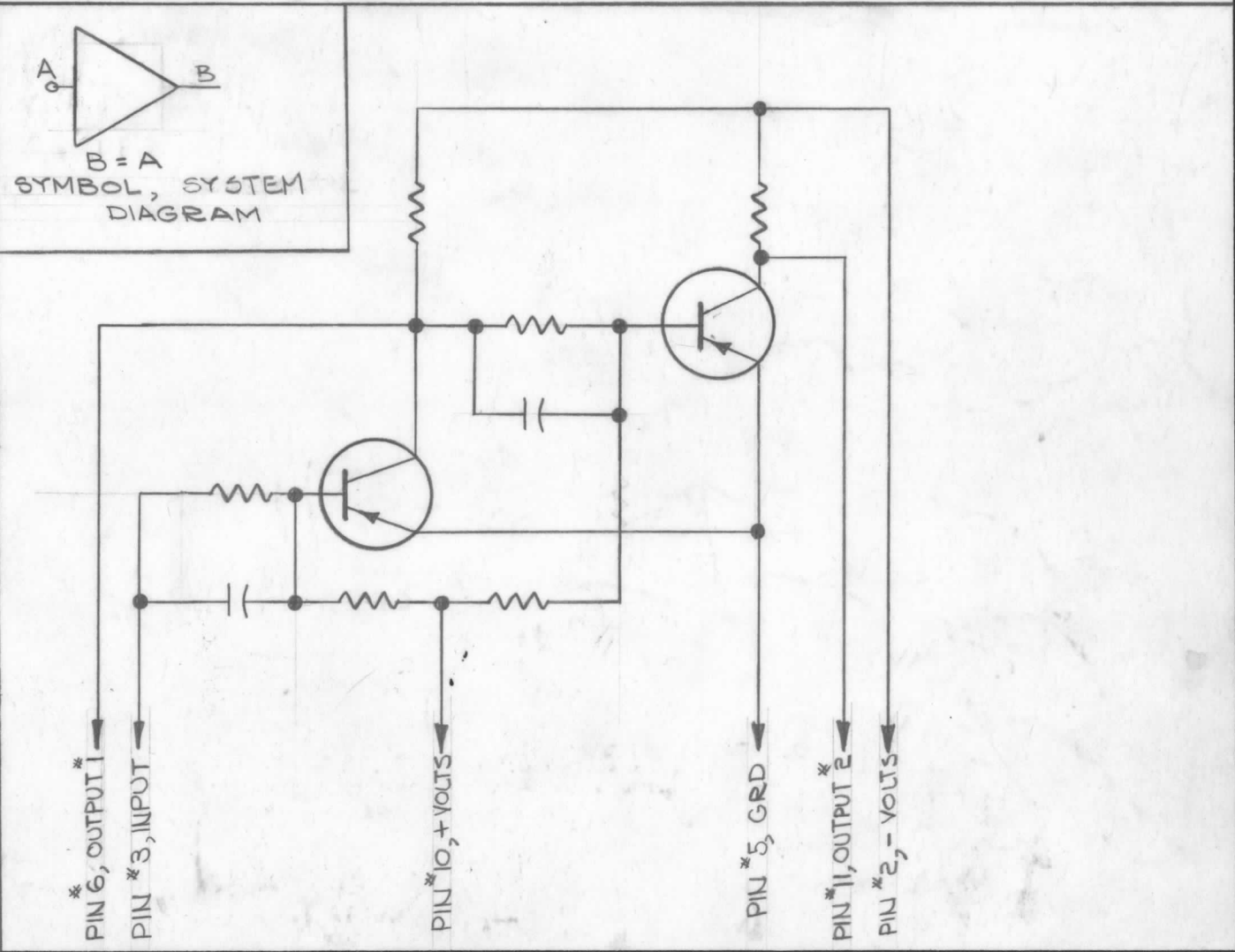
NOTES

SWITCHING CHARACTERISTICS	
A- 6VOLTS LOGIC	B- 12VOLTS LOGIC
INPUT: AMPLITUDE, -3.5V MIN. TR UP TO 1/4 SEC. TF LIMITED ONLY BY THE REP. RATE.	INPUT: AMPLITUDE, -6V MIN. TR UP TO 1µ SEC. TF LIMITED ONLY BY THE REP. RATE.
OUTPUT AMPLITUDE, -6V TR LESS THAN .1/4 SEC TF LESS THAN .3/4 SEC	OUTPUT AMPLITUDE, -12V TR LESS THAN .1µ SEC. TF LESS THAN .3µ SEC.

NOTE: POLARIZING PIN IS PIN #12.

Q'TY./UNIT	MODEL USED ON	ASS'Y. NO.
SCALE 1:1	CODE C	S401-167

THE CONTENTS OF THIS DRAWING ARE THE EXCLUSIVE PROPERTY OF THE TECHNICAL MATERIEL CORP. ITS UNAUTHORIZED USE OR REPRODUCTION IN WHOLE OR IN PART IS STRICTLY FORBIDDEN.



REQ'D.	ITEM	PART NUMBER	DESCRIPTION	SYMBOL
EATON LIST OF MATERIAL				
MATERIAL			THE TECHNICAL MATERIEL CORP.	
EPOXY (GRAY)			MAMARONECK, NEW YORK	
FINISH			TITLE	
GRAY			NETWORK, DIGITAL NON-INVERTING AMPLIFIER	
UNLESS OTHERWISE SPECIFIED DIMENSIONS ARE IN INCHES AND INCLUDE CHEMICALLY APPLIED OR PLATED FINISHES			DRAWN	DATE
			G. Jensen	12-15-64
			CHECKED	DATE
			@	1-13-65
			ELECT. DES.	DATE
			MECH. DES.	DATE
DECIMALS			FRACTIONS	
.X ± .05			± 1/64	
.XX ± .01			ANGLES ± 0° 30'	
.XXX ± .005				
			FINAL APPROVAL	DATE
			RDC	
			SHEET	
			NW109	
			REV. LTR.	
			E	