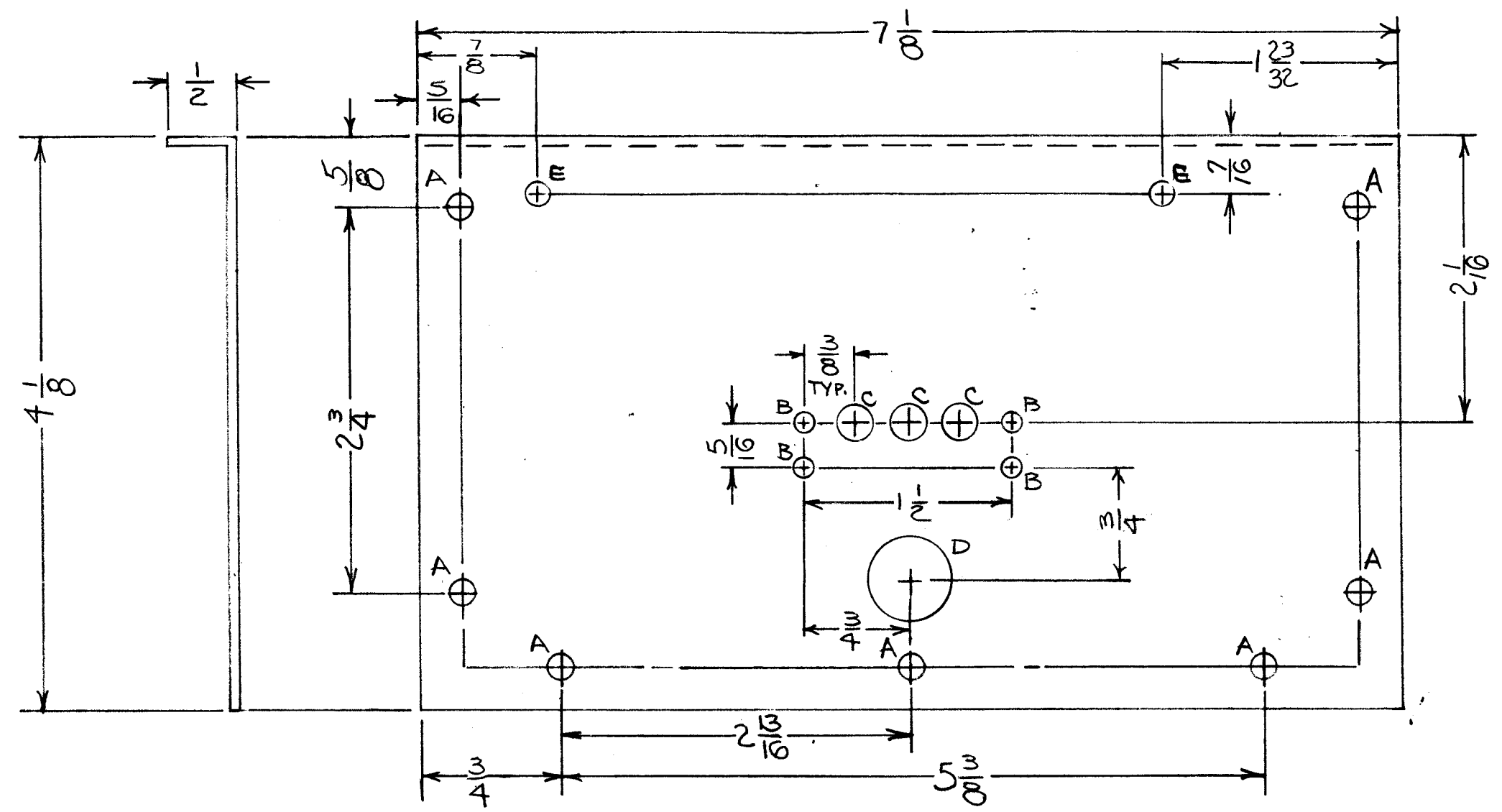


REVISIONS						
ZONE	LTR	DESCRIPTION	DATE	E.M.N.NO	DRAFT	CHKD APPD
	Ø	ORIGINAL RELEASE	8/5/69		GE	



HOLE	DESCRIPTION	REQ
A	11/64 DIA.	7
B	9/64 DIA.	4
C	1/4 DIA.	3
D	5/8 DIA.	1
E	13/64 DIA.	2

1 SPT 3KVHF AP141

QTY / UNIT	MODEL USED ON	ASS'Y NO.
	APPLICATION	
	CODE	

NOTICE TO PERSONS RECEIVING THIS DRAWING  
 THE TECHNICAL MATERIEL CORPORATION claims proprietary right in the material disclosed hereon. This drawing is issued in confidence for engineering information only and may not be reproduced or used to manufacture anything shown hereon without permission from THE TECHNICAL MATERIEL CORPORATION to the user. This drawing is loaned for mutual assistance and is subject to recall at any time.

UNLESS OTHERWISE SPECIFIED DIMENSIONS ARE IN INCHES AND INCLUDE CHEMICALLY APPLIED OR PLATED FINISHES

DECIMALS	FRACTIONS
.X ± .05	1/64
.XX ± .01	TOLS. ANGLES
.XXX ± .005	0° - 30'

MATERIAL 5052-H32  
 .064 ALUM.  
 FINISH S404-YEL.IRIDITE

REQ'D	ITEM	PART NUMBER	DESCRIPTION	SYM.
F. BUDETTI				
LIST OF MATERIAL				
THE TECHNICAL MATERIEL CORP. MAMARONECK, NEW YORK				
PANEL, REAR				
SIZE	CODE IDENT. NO.	DWG NO.	ISSUE	
B	82679	MS8459	Ø	
SCALE ~ NO ~			SHEET 1 OF 1	