

5

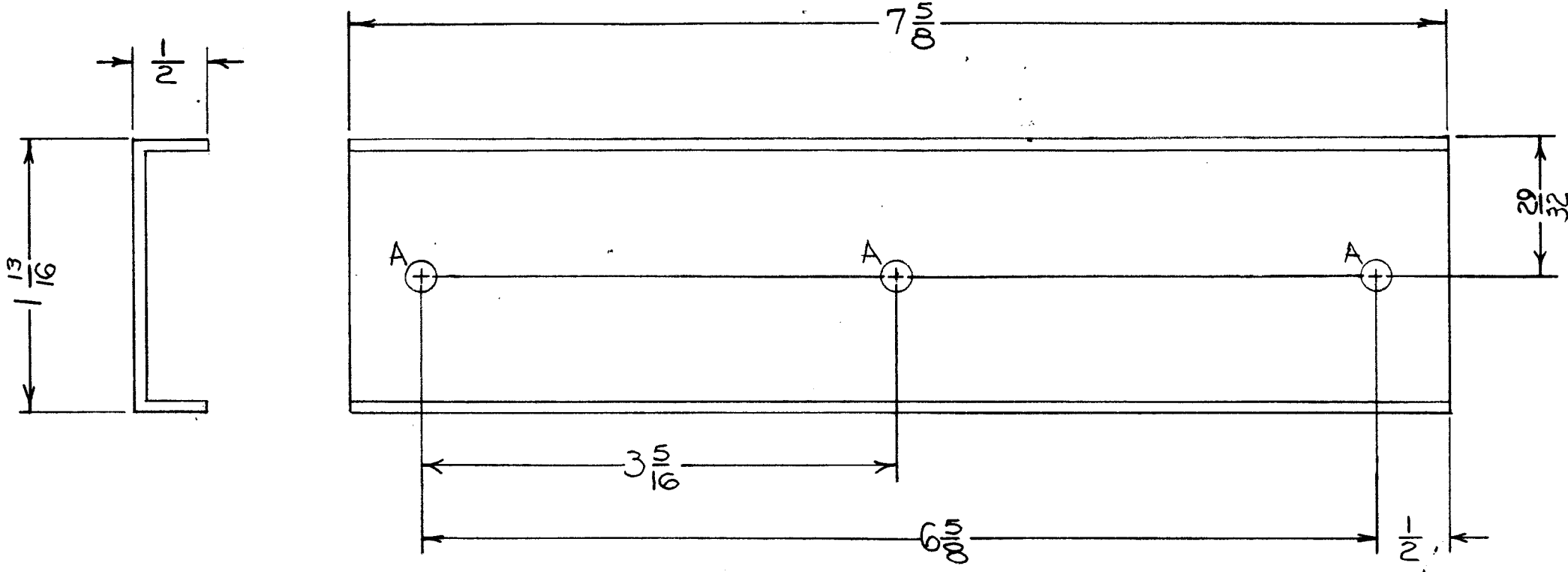
4

3

2

1

REVISIONS							
ZONE	LTR	DESCRIPTION	DATE	E.M.N.NO	DRAFT	CHKD	APPD
	Ø	ORIGINAL RELEASE	8/5/69		GE		



HOLE	DESCRIPTION	REQ.
A	11/64 DIA.	3

REQ'D	ITEM	PART NUMBER	DESCRIPTION	SYM.
			F. BUDETTI	
LIST OF MATERIAL				
THE TECHNICAL MATERIEL CORP. MAMARONECK, NEW YORK				
GUIDE TRACK, MOD.				
SIZE	CODE IDENT. NO.	DWG NO.	ISSUE	
B	82679	MS8458	Ø	
SCALE			SHEET 1 OF 1	

QTY / UNIT	MODEL USED ON	ASS'Y NO.
1	SPT 3KVHF	AP141
APPLICATION		
	CODE	

DECIMALS	FRACTIONS	TOLS.	ANGLES
.X ± .05	1/64		
.XX ± .01			0° - 30'
.XXX ± .005			

UNLESS OTHERWISE SPECIFIED DIMENSIONS ARE IN INCHES AND INCLUDE CHEMICALLY APPLIED OR PLATED FINISHES

MATERIAL 5052-H32
Ø64 ALUM.
FINISH S404-YEL. IRIDITE

FINAL APPROVAL: [Signature] DATE: 8-11-69
MECH. DES. [Signature] DATE: []
ELECT. DES. [Signature] DATE: []
CHECKED [Signature] DATE: []
DRAWN: A. PETROCCA DATE: 11-7

NOTICE TO PERSONS RECEIVING THIS DRAWING
THE TECHNICAL MATERIEL CORPORATION claims proprietary right in the material disclosed hereon. This drawing is issued in confidence for engineering information only and may not be reproduced or used to manufacture anything shown hereon without permission from THE TECHNICAL MATERIEL CORPORATION to the user. This drawing is loaned for mutual assistance and is subject to recall at any time.