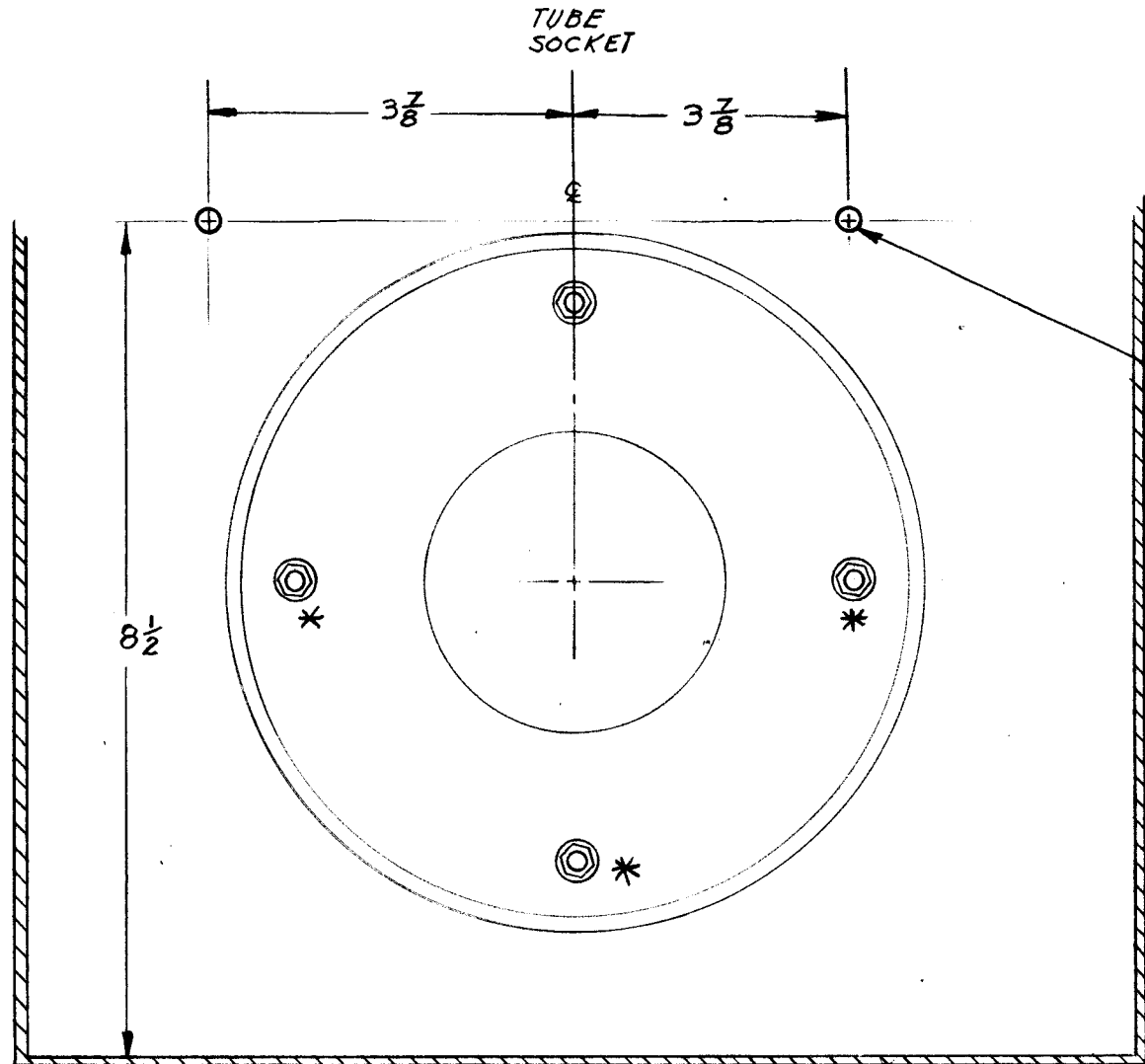


| REVISIONS |     |                   |        |          |       |           |
|-----------|-----|-------------------|--------|----------|-------|-----------|
| ZONE      | LTR | DESCRIPTION       | DATE   | E.M.N.NO | DRAFT | CHKD APPD |
|           | Ø   | ORIG REL FOR PROD | 4.3.69 | —        | GE    | <i>fw</i> |



TAP 1/4-20  
(2 PLACES)

NOTE:

1. REMOVE SCREEN PLATE (TOP)
2. REMOVE POLY STY SPACERS FROM PLATE
3. REPLACE SCREEN PLATE \* PLACING SCREWS FROM BOTTOM UP.

TOP VIEW

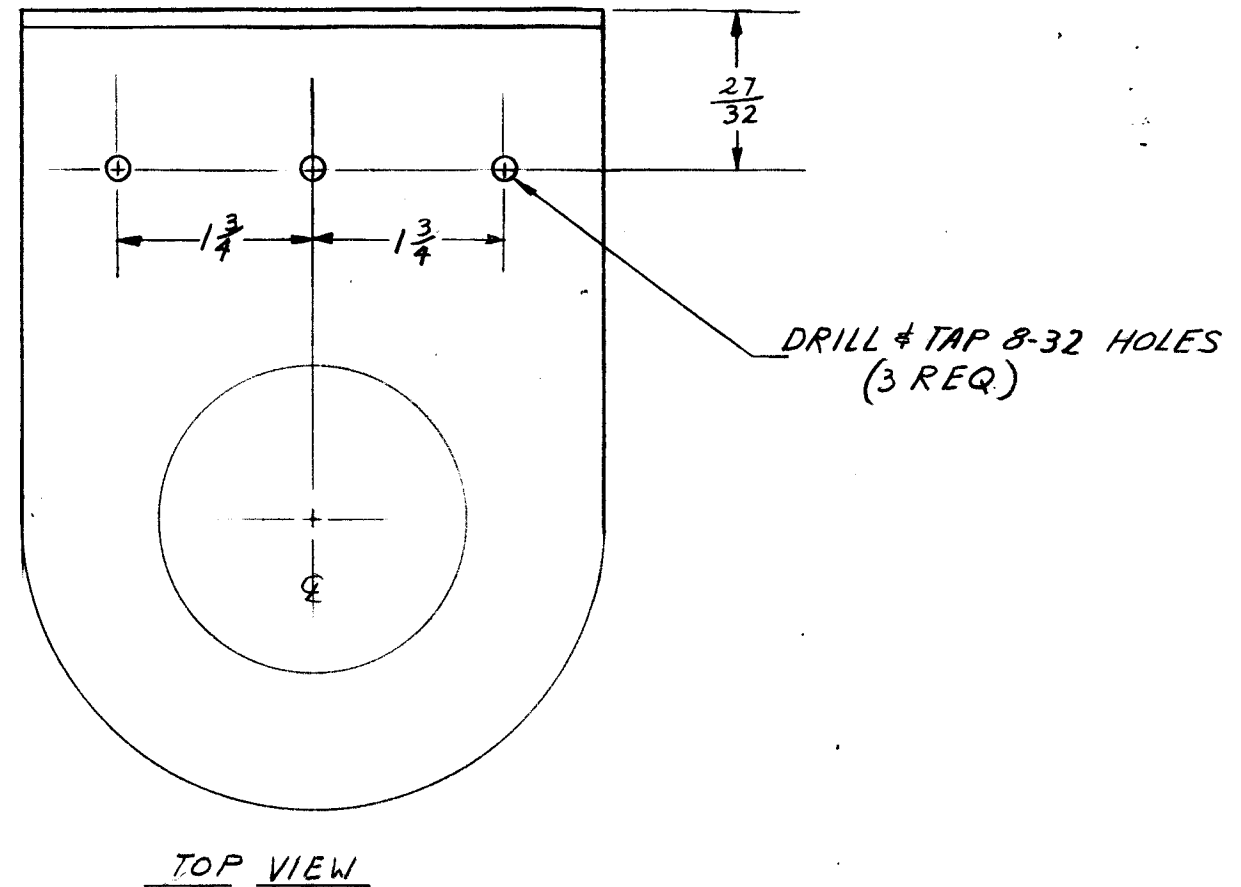
|             |               |           |
|-------------|---------------|-----------|
| QTY / UNIT  | SPT3K/VHF     | AX80B1    |
|             | MODEL USED ON | ASS'Y NO. |
| APPLICATION |               |           |
|             | CODE          |           |

**NOTICE TO PERSONS RECEIVING THIS DRAWING**  
 THE TECHNICAL MATERIEL CORPORATION claims proprietary right in the material disclosed hereon. This drawing is issued in confidence for engineering information only and may not be reproduced or used to manufacture anything shown hereon without permission from THE TECHNICAL MATERIEL CORPORATION to the user. This drawing is loaned for mutual assistance and is subject to recall at any time.

|   |                                       |
|---|---------------------------------------|
| UNLESS OTHERWISE SPECIFIED DIMENSIONS ARE IN INCHES AND INCLUDE CHEMICALLY APPLIED OR PLATED FINISHES |                                       |
| DECIMALS<br>.X ± .05<br>.XX ± .01<br>.XXX ± .005  | FRACTIONS<br>1/64<br>ANGLES<br>0°-30' |
| MATERIAL PURCHASE<br>MCL MODEL 11063  |                                       |
| FINISH  |                                       |

| REQ'D  | ITEM            | PART NUMBER | DESCRIPTION  | SYM. |
|--|-----------------|-------------|--------------|------|
| LIST OF MATERIAL                                     |                 |             |              |      |
| THE TECHNICAL MATERIEL CORP.<br>MAMARONECK, NEW YORK |                 |             |              |      |
| MODIFICATION OF AZ8007                               |                 |             |              |      |
| SIZE   | CODE IDENT. NO. | DWG NO.     | ISSUE        |      |
| B  | 82679           | MS 8425     | Ø            |      |
| SCALE  |                 |             | SHEET 1 OF 2 |      |
| X  |                 |             |              |      |

| REVISIONS |     |                   |        |          |       |      |             |
|-----------|-----|-------------------|--------|----------|-------|------|-------------|
| ZONE      | LTR | DESCRIPTION       | DATE   | E.M.N.NO | DRAFT | CHKD | APPD        |
|           | Ø   | ORIG REL FOR PROD | 4-3-69 | #        | GE    |      | <i>Jide</i> |



|  |               |           |
|--|---------------|-----------|
| 1  | SPT-3KVHF     | AXB081    |
| QTY / UNIT   | MODEL USED ON | ASS'Y NO. |
| APPLICATION  |               |           |
|  | CODE          |           |
| <p style="font-size: small;">NOTICE TO PERSONS RECEIVING THIS DRAWING<br/>         THE TECHNICAL MATERIEL CORPORATION claims proprietary right in the material disclosed hereon. This drawing is issued in confidence for engineering information only and may not be reproduced or used to manufacture anything shown hereon without permission from THE TECHNICAL MATERIEL CORPORATION to the user. This drawing is loaned for mutual assistance and is subject to recall at any time.</p> |               |           |

|   |   |
|---|---|
| UNLESS OTHERWISE SPECIFIED DIMENSIONS ARE IN INCHES AND INCLUDE CHEMICALLY APPLIED OR PLATED FINISHES |   |
| DECIMALS<br>.X ± .05<br>.XX ± .01<br>.XXX ± .005  | FRACTIONS<br>1/64<br>ANGLES<br>0° - 30' |
| MATERIAL PURCHASE<br>MCL MODEL 11063  |   |
| FINISH  |   |

| REQ'D  | ITEM            | PART NUMBER | DESCRIPTION  | SYM. |
|--|-----------------|-------------|--------------|------|
| LIST OF MATERIAL                                     |                 |             |              |      |
| THE TECHNICAL MATERIEL CORP.<br>MAMARONECK, NEW YORK |                 |             |              |      |
| MODIFICATION OF AZ8007                               |                 |             |              |      |
| SIZE   | CODE IDENT. NO. | DWG NO.     | ISSUE        |      |
| B  | 82679           | MS 8425     | Ø            |      |
| SCALE  |                 |             | SHEET 2 OF 2 |      |