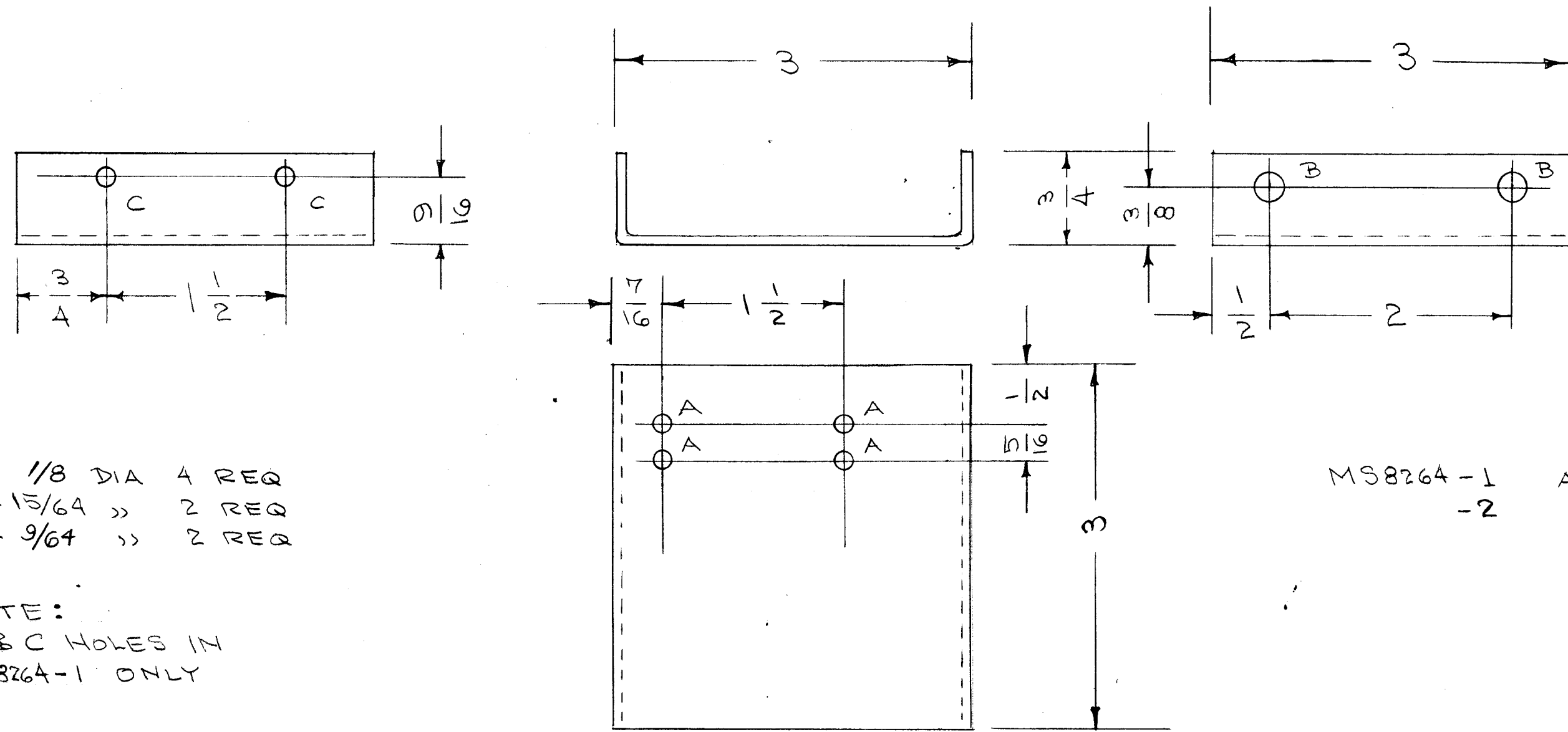


REVISIONS						
ZONE	LTR	DESCRIPTION	DATE	E.M.N.NO	DRAFT	CHKD APPD
	\emptyset	ORIGINAL RELEASE	8/12/69	\emptyset		
A		ADDED C HOLES 9/64, A HOLE WAS 9/64		20468	CV	cf cf



- A - 1/8 DIA 4 REQ
- B - 15/64 » 2 REQ
- C - 9/64 » 2 REQ

NOTE:
A & C HOLES IN
MS8264-1 ONLY

MS8264 - 1
- 2
A, B, C HOLES
B HOLES ONLY

REQ'D	ITEM	PART NUMBER	DESCRIPTION	SYM.
LIST OF MATERIAL				
THE TECHNICAL MATERIEL CORP. MAMARONECK, NEW YORK				
BRACKET, M TG, TERMINAL BOARD				
SIZE	CODE IDENT. NO.	DWG NO.	ISSUE	
B	82679	MS8264	A	
SCALE 1:1			SHEET 1 OF 1	

QTY / UNIT	MODEL USED ON	ASS'Y NO.
1	SPT-3KVHF	AV1080
APPLICATION		
CODE		
NOTICE TO PERSONS RECEIVING THIS DRAWING THE TECHNICAL MATERIEL CORPORATION claims proprietary right in the material disclosed hereon. This drawing is issued in confidence for engineering information only and may not be reproduced or used to manufacture anything shown hereon without permission from THE TECHNICAL MATERIEL CORPORATION to the user. This drawing is loaned for mutual assistance and is subject to recall at any time.		

UNLESS OTHERWISE SPECIFIED DIMENSIONS ARE IN INCHES AND INCLUDE CHEMICALLY APPLIED OR PLATED FINISHES	FINAL APPROVAL	DATE
DECIMALS .X ± .05 FRACTIONS 1/64	<i>[Signature]</i>	8-12-69
.XX ± .01 TOLS. ANGLES	MECH. DES.	DATE
.XXX ± .005 0°-30'	ELECT. DES.	8-12-69
MATERIAL 064	CHECKED	DATE
5052 H32 ALUM	DRAWN C.D. DEAN	5-27-68
FINISH SA04 IRIDITE		