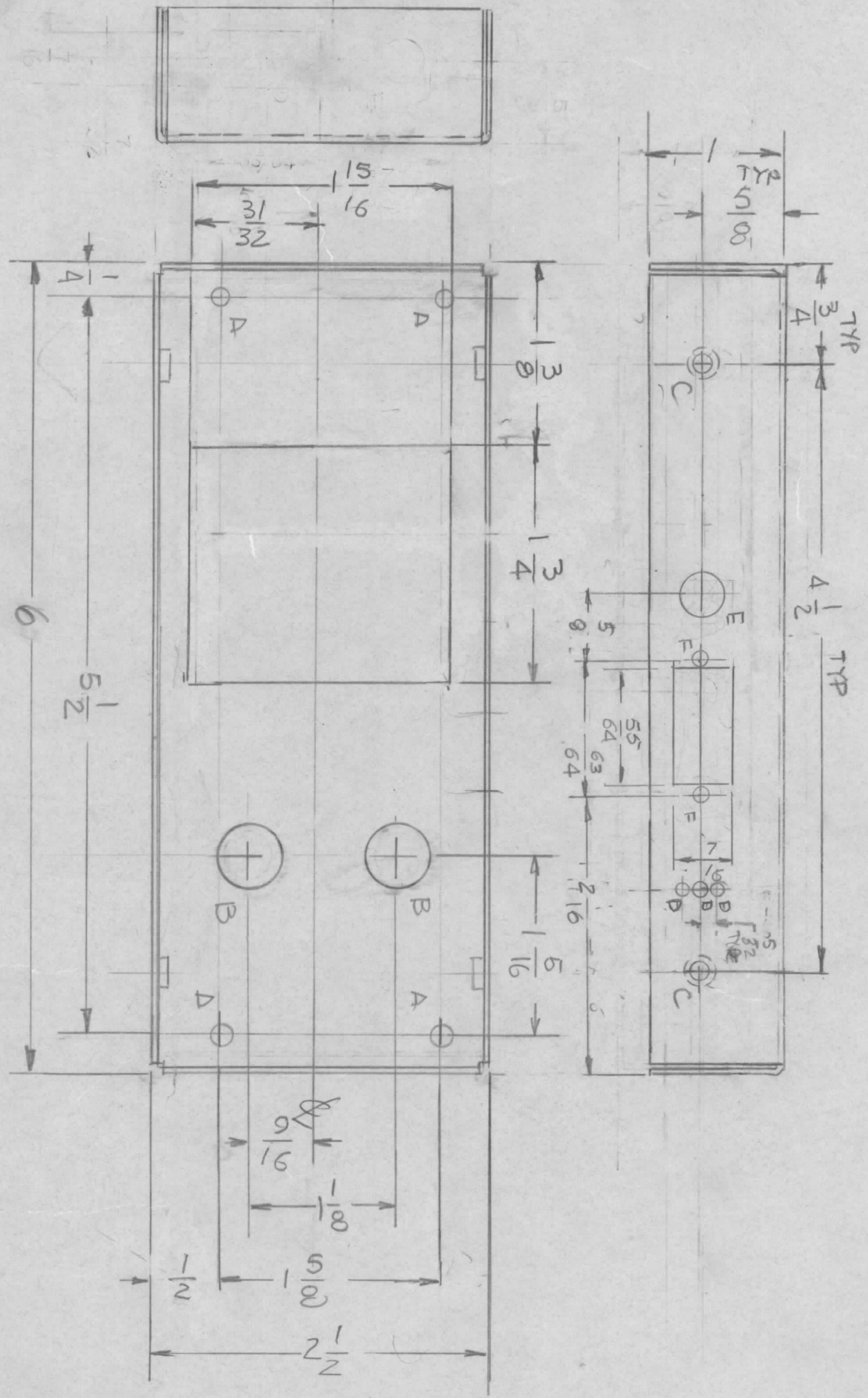


REVISIONS			DATE	APPROVED	
EM/N NO.	DRAFT	CHKD	ZONE	LTR	DESCRIPTION
				X1	CUT OUT FOR CONNECTOR ADD.
				X2	THRO FACES ADD
					1-9-85
					4.24.87



- HOLES -
- A - 3/16 DIA 4 REQ'D
  - B - 1/2 DIA 2 REQ'D
  - C - .161 - 164 DIA 4 REQ'D
  - D - .116 DIA 3 REQ'D
  - E - 11/32 DIA 1 REQ'D
  - F - 1/8 DIA 1 REQ'D

REQ'D ITEM	PART NUMBER	DESCRIPTION	SYM.
LIST OF MATERIAL			

**THE TECHNICAL MATERIEL CORP.**  
MAMARONECK, NEW YORK

SHIELD PCB BDP  
CUT OUT

QTY / UNIT		MODEL USED ON		ASS'Y NO.	
1		MMX-4			
APPLICATION				CODE	
1					

UNLESS OTHERWISE SPECIFIED DIMENSIONS ARE IN INCHES AND INCLUDE CHEMICALLY APPLIED OR PLATED FINISHES			
DECIMALS	TOLS.	FRACTIONS	ANGLES
.X ± .05	.XX ± .01	1/64	0° - 30'
XXX ± .005			
MATERIAL		FINISH	
ALUM .051 THK		S404	
		VEL. IRIDITE	
ALUM 5052-H32			

FINAL APPROVAL		DATE	
MECH. DES.			
ELECT. DES.			
CHECKED	DATE	CHECKED	DATE
DRAWN	DATE	DRAWN	DATE
G.D.L.	10-384		

SIZE	CODE IDENT. NO.	DWG NO.	ISSUE
B	82679	MS 7160	X2
SCALE	1:1	SHEET	OF

**NOTICE TO PERSONS RECEIVING THIS DRAWING**  
THE TECHNICAL MATERIEL CORPORATION claims proprietary right in the material disclosed hereon. This drawing is issued in confidence for engineering information only and may not be reproduced or used to manufacture anything shown hereon without permission from THE TECHNICAL MATERIEL CORPORATION to the user. This drawing is loaned for use only and is subject to recall at any time.