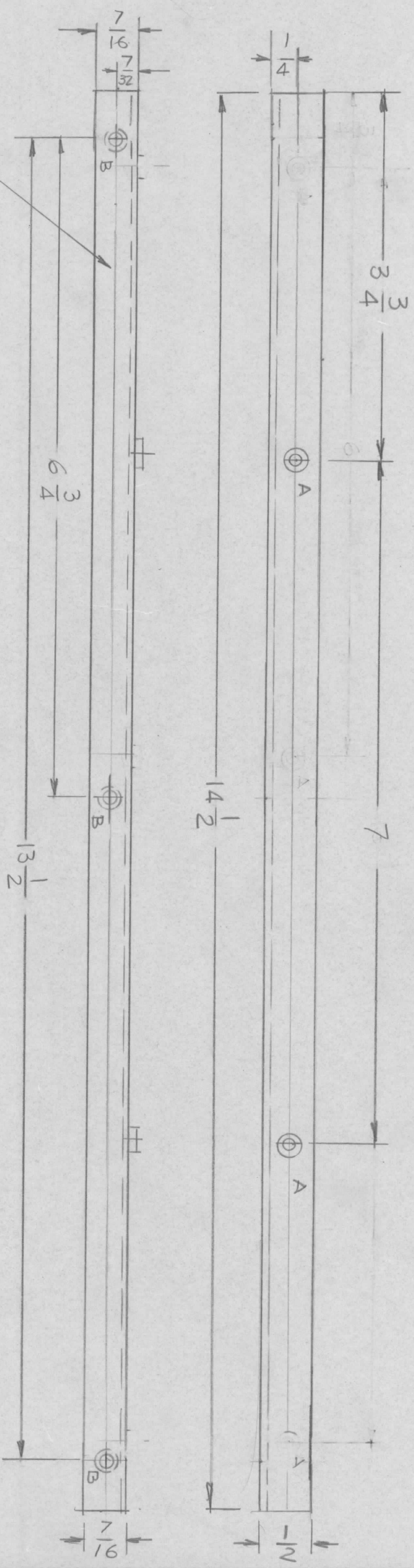


REVISIONS				DATE	APPROVED
E.M.N. NO.	DRAFT	CHKD	ZONE	LTR	DESCRIPTION
	GDL				ORIGINAL RELEASE FOR PROD.
					1-11-83



MARK TMC P/NO. 1/8 HEIGHT
 GOTHIC WITH LATEST REV.
 LETTER.

HOLES:
 A - .189 DIA 3 REQ'D
 B - .191 - .194 DIA 3 REQ'D

REQ'D ITEM	PART NUMBER	DESCRIPTION	SYM.
3	2	NT129 0632-4 NUT, ROUND	B
3	1	TE108-B STANDOFF RIVET	A

QTY / UNIT	ΔX 5256	MODEL USED ON	ASS'Y NO.
1	ΔX 5255	APPLICATION	
		CODE	

UNLESS OTHERWISE SPECIFIED DIMENSIONS ARE IN INCHES AND INCLUDE CHEMICALLY APPLIED OR PLATED FINISHES	FINAL APPROVAL	DATE
MECH. DES.	<i>G.D.L.</i>	2-2-83
ELECT. DES.	<i>G.D.L.</i>	1-11-83
CHECKED		DATE
DRAWN	<i>G.D.L.</i>	8-4-82

LIST OF MATERIAL

THE TECHNICAL MATERIEL CORP.
 MAMARONECK, NEW YORK

BRACKET PC BOARD
 (FRONT)

- UNLESS OTHERWISE SPECIFIED:
1. USE MATERIAL THICKNESS FOR MAXIMUM RADIUS ON ALL BENDS.
 2. ALL ANGULAR BENDS 90 DEGREES.
 3. REMOVE ALL BURRS AND SHARP EDGES.
 4. MOUNT INSERTS AFTER FINISHING.

NOTICE TO PERSONS RECEIVING THIS DRAWING

THE TECHNICAL MATERIEL CORPORATION claims proprietary right in the material disclosed hereon. This drawing is issued in confidence for engineering information only and may not be reproduced or used to manufacture anything shown hereon without permission from THE TECHNICAL MATERIEL CORPORATION to the user. This drawing is loaned for mutual assistance and is subject to recall at any time.

SIZE B

CODE IDENT. NO. 82679

DWG NO. MS 7102

SCALE 1:1

SHEET OF

ISSUE