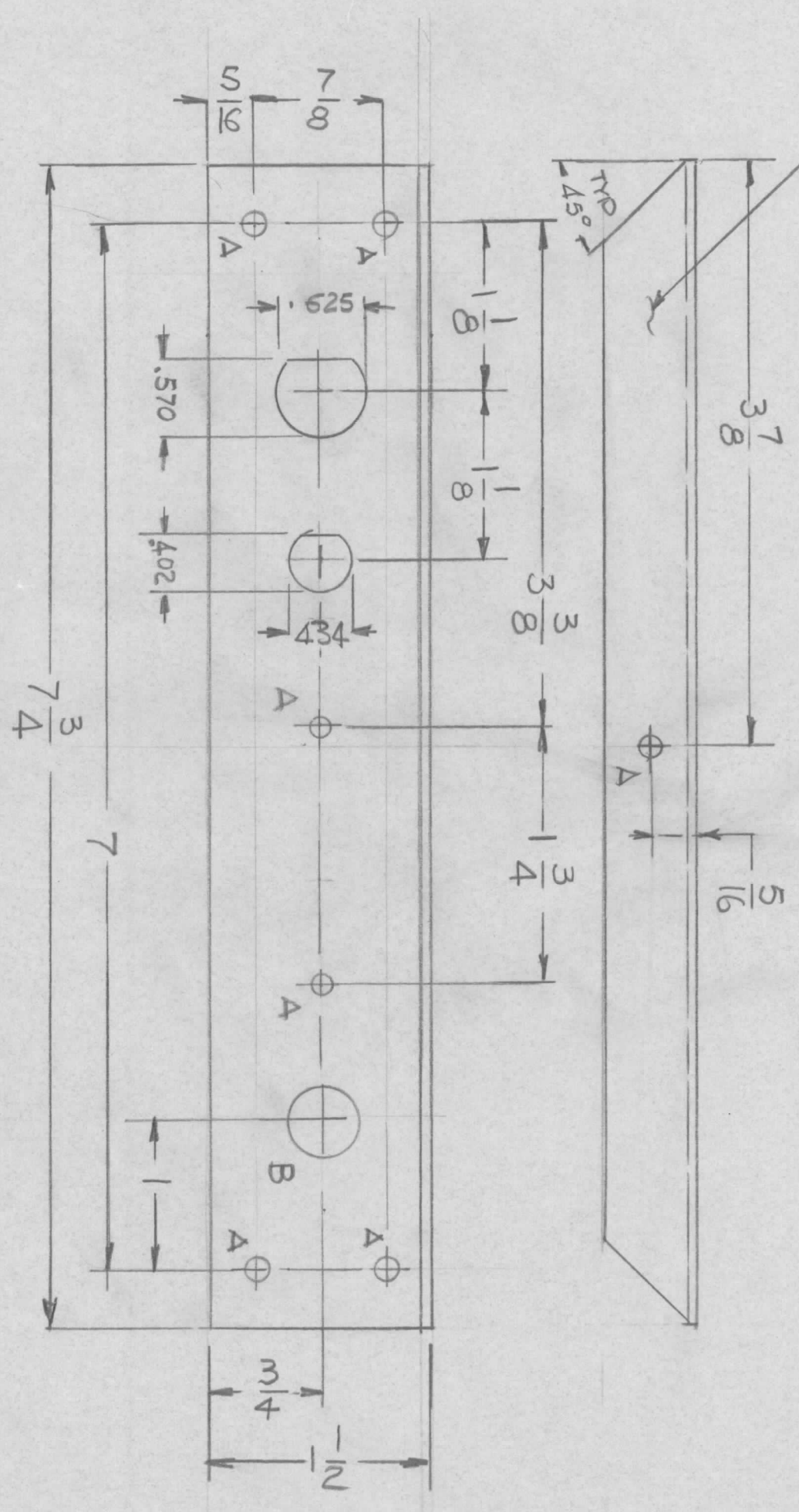


REVISIONS				DATE	APPROVED
EMN NO.	DRAFT	CHKD	ZONE	LTR	DESCRIPTION

MARK TMC P/NO. 1/8 HIGH GOTHIC WITH LATEST REV. LETTER.



HOLE -
A - 3/16 DIA 7 REQ'D
B - 1/2 DIA 1 REQ'D

UNLESS OTHERWISE SPECIFIED:

1. USE MATERIAL THICKNESS FOR MAXIMUM RADIUS ON ALL BENDS.
2. ALL ANGULAR BENDS 90 DEGREES.
3. REMOVE ALL BURRS AND SHARP EDGES.
4. MOUNT INSERTS AFTER FINISHING.

REF: LD 3122

UNLESS OTHERWISE SPECIFIED DIMENSIONS ARE IN INCHES AND INCLUDE CHEMICALLY APPLIED OR PLATED FINISHES

DECIMALS FRACTIONS
.X ± .05 TOLS. 1/64
.XX ± .01 ANGLES
.XXX ± .005 ° ± .30'

MATERIAL: .063TH ALUM 5052-H32
FINISH: S404 YEL. IRIDITE

REQ'D	ITEM	PART NUMBER	DESCRIPTION	SYM.
			THE TECHNICAL MATERIEL CORP. MAMARONECK, NEW YORK	

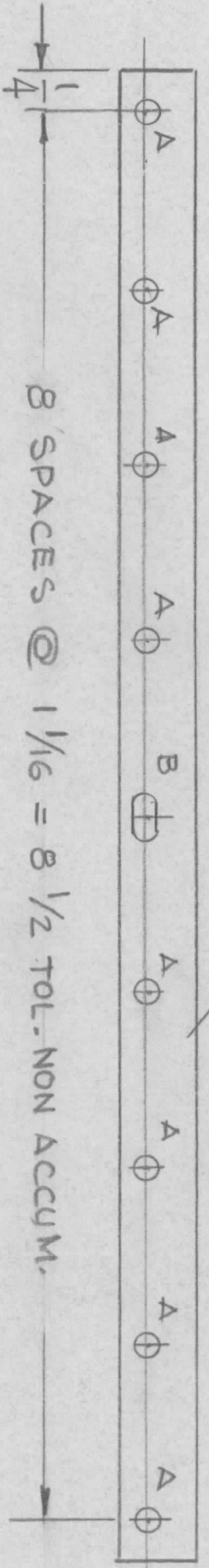
FINAL APPROVAL	MECH. DES.	DATE	ELECT. DES.	DATE

QTY / UNIT	MODEL USED ON	ASSY NO.	SCALE	SHEET	OF	ISSUE
1	FCU-1		B	82679	MS 7011	X

NOTICE TO PERSONS RECEIVING THIS DRAWING
THE TECHNICAL MATERIEL CORPORATION claims proprietary right in the material disclosed hereon. This drawing is issued in confidence for engineering information only and may not be reproduced or used to manufacture anything shown hereon without permission from THE TECHNICAL MATERIEL CORPORATION to the user. This drawing is loaned for mutual assistance and is subject to recall at any time.

REVISIONS							
EMN NO.	DRAFT	CHKD	ZONE	LTR	DESCRIPTION	DATE	APPROVED

MARK TMC P/NO 1/8 HIGH GOTHIC
W/LATEST REV. LETTER



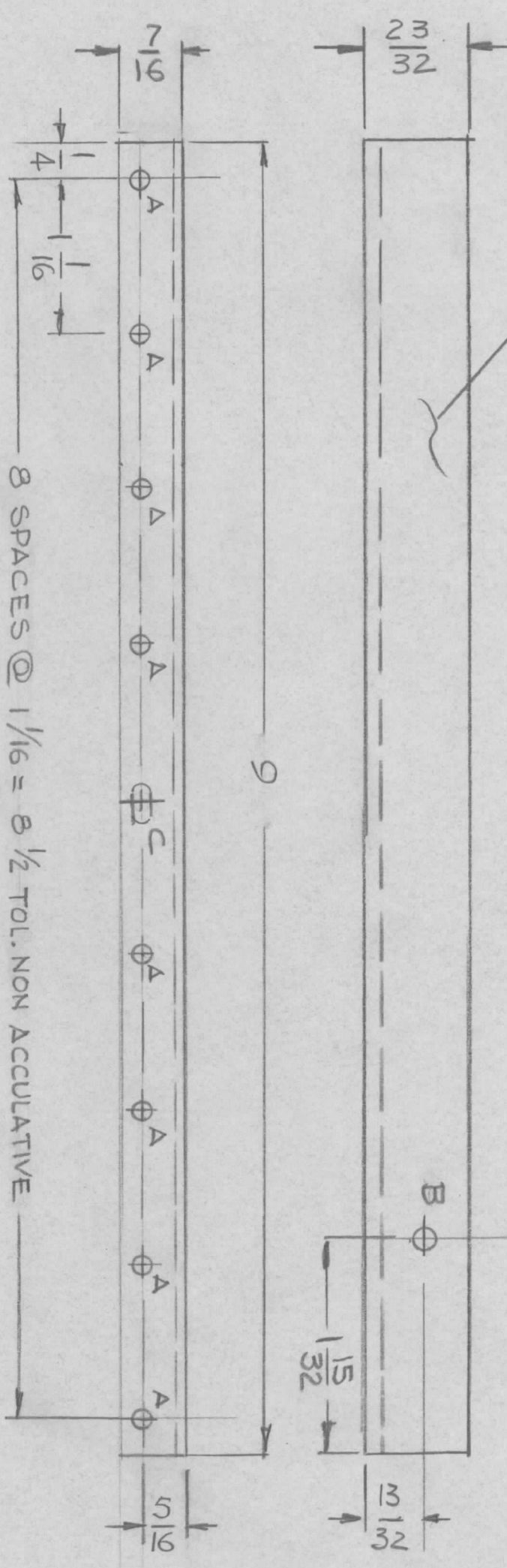
HOLES
A - 9/64 DIA 9 REQ'D
B - 11/64 X 11/32 SLOT 1 REQ'D

QTY / UNIT	1	MODEL USED ON	MFO	ASS'Y NO.	
APPLICATION					
CODE					
<p>UNLESS OTHERWISE SPECIFIED DIMENSIONS ARE IN INCHES AND INCLUDE CHEMICALLY APPLIED OR PLATED FINISHES</p> <p>DECIMALS FRACTIONS</p> <p>.X ± .05 1/64</p> <p>.XX ± .01 TOLS. ANGLES</p> <p>.XXX ± .005 0° - 30'</p>					
MATERIAL		ALUM 5052-H32			
FINISH		S404			
YEL. IRIDITE					
REQ'D	ITEM	PART NUMBER	DESCRIPTION	SYM.	
LIST OF MATERIAL					
THE TECHNICAL MATERIEL CORP.					
MAMARONECK, NEW YORK					
PLATE, STIFFENER					
SIZE	CODE IDENT. NO.	DWG NO.	ISSUE		
B	82679	MS 7013	X		
SCALE	1:1	SHEET	OF		

NOTICE TO PERSONS RECEIVING THIS DRAWING
THE TECHNICAL MATERIEL CORPORATION claims proprietary right in the material disclosed hereon. This drawing is issued in confidence for engineering information only and may not be reproduced or used to manufacture anything shown hereon without permission from THE TECHNICAL MATERIEL CORPORATION to the user. This drawing is loaned for mutual assistance and is subject to recall at any time.

REVISIONS				DATE	APPROVED
EMN. NO.	DRAFT	CHKD	ZONE	LTR	DESCRIPTION

MARK TMC P/NO. 1/8 HIGH GOTHIC
W/LATEST REV. LETTER



HOLES

- A - 9/64 DIA 9 REQ'D
- B - 3/16 DIA 1 REQ'D
- C - 11/64 x 11/32 SLOT 1 REQ'D

UNLESS OTHERWISE SPECIFIED:

1. USE MATERIAL THICKNESS FOR MAXIMUM RADIUS ON ALL BENDS.
2. ALL ANGULAR BENDS 90 DEGREES.
3. REMOVE ALL BURRS AND SHARP EDGES.
4. MOUNT INSERTS AFTER FINISHING.

QTY / UNIT	1	MODEL USED ON	MFO	ASSY NO.	
		APPLICATION			
		CODE			

NOTICE TO PERSONS RECEIVING THIS DRAWING
THE TECHNICAL MATERIEL CORPORATION claims proprietary right in the material disclosed hereon. This drawing is issued in confidence for engineering information only and may not be reproduced or used to manufacture anything shown hereon without permission from THE TECHNICAL MATERIEL CORPORATION to the user. This drawing is loaned for mutual assistance and is subject to recall at any time.

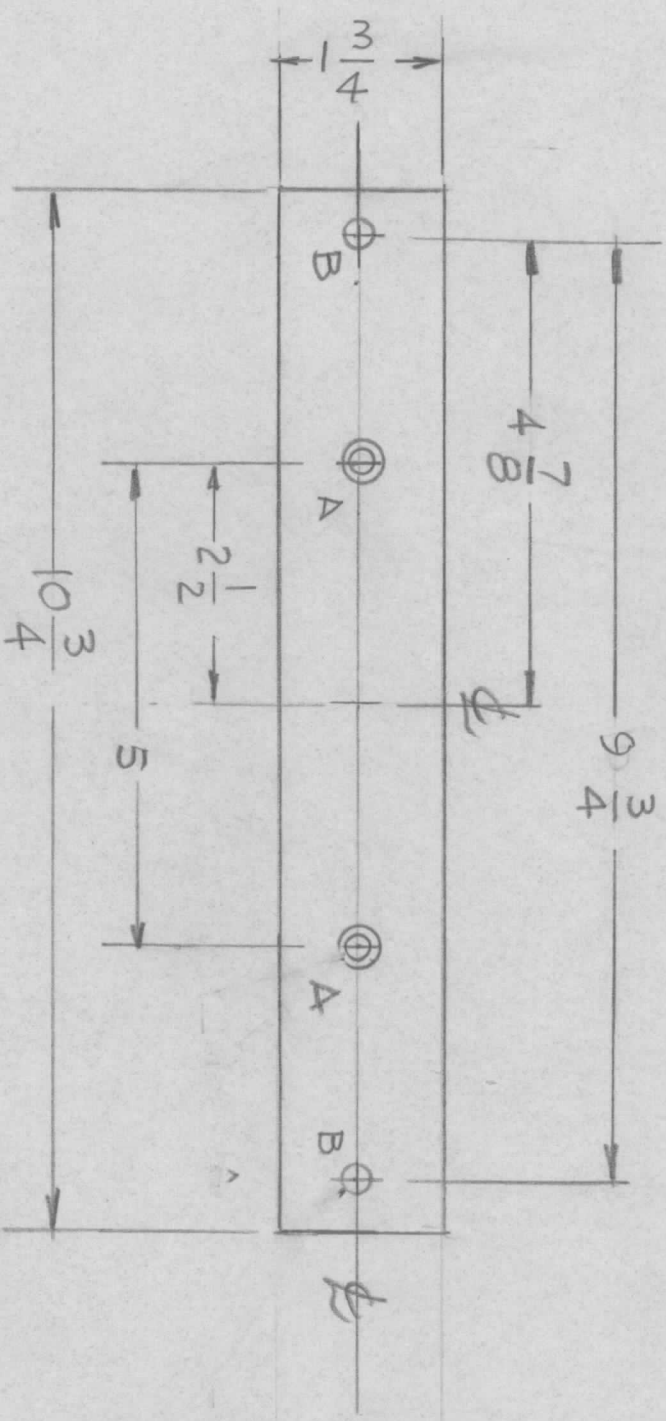
REQ'D	ITEM	PART NUMBER	DESCRIPTION	SYM.
			LIST OF MATERIAL	

FINAL APPROVAL		DATE	THE TECHNICAL MATERIEL CORP.	
MECH. DES.		DATE	MAMARONECK, NEW YORK	
ELECT. DES.		DATE		
CHECKED		DATE		
DRAWN	GDL	DATE		


UNLESS OTHERWISE SPECIFIED DIMENSIONS ARE IN INCHES AND INCLUDE CHEMICALLY APPLIED OR PLATED FINISHES	DECIMALS	FRACTIONS	ANGLES
	.X ± .05 TOLS.	1/64	0° - 30'
	.XX ± .01		
	.XXX ± .005		
MATERIAL	ALUM 5052-H32	FINISH	S404
			YEL. IRIDITE
SIZE	B	CODE IDENT. NO.	82679
SCALE		DWG NO.	MS 7014
		SHEET	

ANGLE, STIFFENER

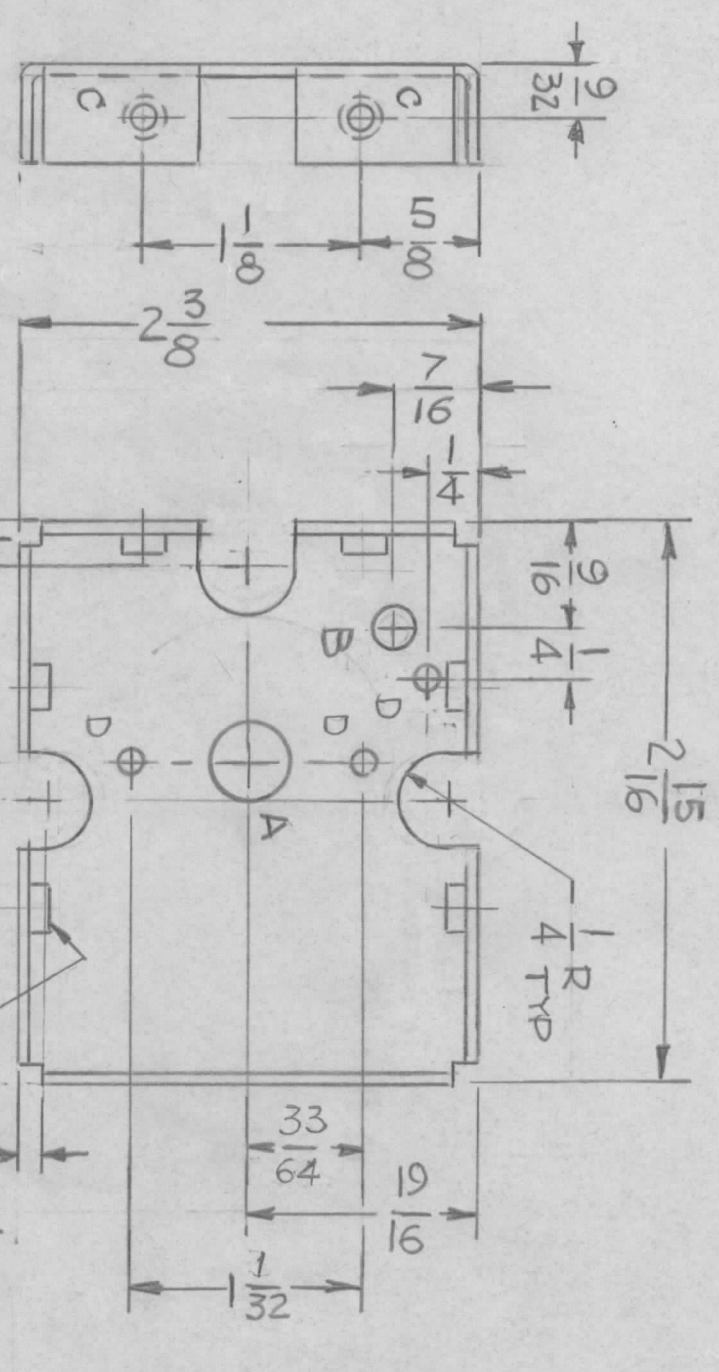
REVISIONS							
E.M.N. NO.	DRAFT	CHKD	ZONE	LTR	DESCRIPTION	DATE	APPROVED
	das			Ø	ORIGINAL RELEASE	7-7-80	



HOLES:
 A - .169 DIA C/SHK 82° TO .337 DIA 2 REQ
 B - 9/32 DIA 2 REQ

REQ'D	ITEM	PART NUMBER	DESCRIPTION	SYM.
			LIST OF MATERIAL	
<p style="text-align: center;">THE TECHNICAL MATERIEL CORP. MAMARONECK, NEW YORK</p> <p style="text-align: center;">MTG. BRACKET CASE</p>				
FINAL APPROVAL 		DATE	SIZE CODE IDENT. NO. DWG NO. ISSUE B 82679 MS7024 Ø	
MECH. DES.		DATE	SCALE 1/2	
ELECT. DES.		DATE		
CHECKED		DATE		
DRAWN		DATE		
G.D.L.		5-7-80		
UNLESS OTHERWISE SPECIFIED DIMENSIONS ARE IN INCHES AND INCLUDE CHEMICALLY APPLIED OR PLATED FINISHES DECIMALS FRACTIONS .X ± .05 TOLS. 1/64 .XX ± .01 ANGLES 0° - 30' .XXX ± .005 MATERIAL 3/16THK AL. 2024-T3 FINISH S404 YEL. IRIDITE				
QTY / UNIT MODEL USED ON ASS'Y NO. 1 ATU-350A				
APPLICATION CODE				
NOTICE TO PERSONS RECEIVING THIS DRAWING THE TECHNICAL MATERIEL CORPORATION claims proprietary right in the material disclosed hereon. This drawing is issued in confidence for engineering information only and may not be reproduced or used to manufacture anything shown hereon without permission from THE TECHNICAL MATERIEL CORPORATION to the user. This drawing is loaned for mutual assistance and is subject to recall at any time.				

REVISIONS				DATE	APPROVED
EMN. NO.	DRAFT	CHKD	ZONE	LTR	DESCRIPTION
				X1	THREE NOTCHES 1/4" D.D.D.
				Ø	ORIGINAL RELEASE
	G.D.L.		A		DIMS. LOCATIONS 'D' HOLES WAS 19/32 & 13/16
	G.D.L.		B		QTY. 'C' HOLE WAS 6
	G.D.L.		C		ON RIGHT SIDE WAS INDICATED 'D' HOLE
					8-28-90



OPPOSITE SIDE TYP.

REF: LD 3126
LD 3127

MS 7026 -1 MIRROR IMAGE REQ'D 1
MS 7026 -2 AS SHOWN (FRONT) REQ'D 1

HOLE - REQ'D

A -	7/16 DIA	1
B -	1/4 DIA	1
C -	.161-.164 DIA	8
D -	9/64 DIA	3

QTY / UNIT	1	AMC-21C	MODEL USED ON	ASSY NO.
APPLICATION				
CODE				

NOTICE TO PERSONS RECEIVING THIS DRAWING
THE TECHNICAL MATERIEL CORPORATION claims proprietary right in the material disclosed hereon. This drawing is issued in confidence for engineering information only and may not be reproduced or used to manufacture anything shown hereon without permission from THE TECHNICAL MATERIEL CORPORATION to the user. This drawing is loaned for mutual assistance and is subject to recall at any time.

REQ'D	ITEM	PART NUMBER	DESCRIPTION	SYM.
8	1	NT129-0440-A	NUT, SWAGE	C

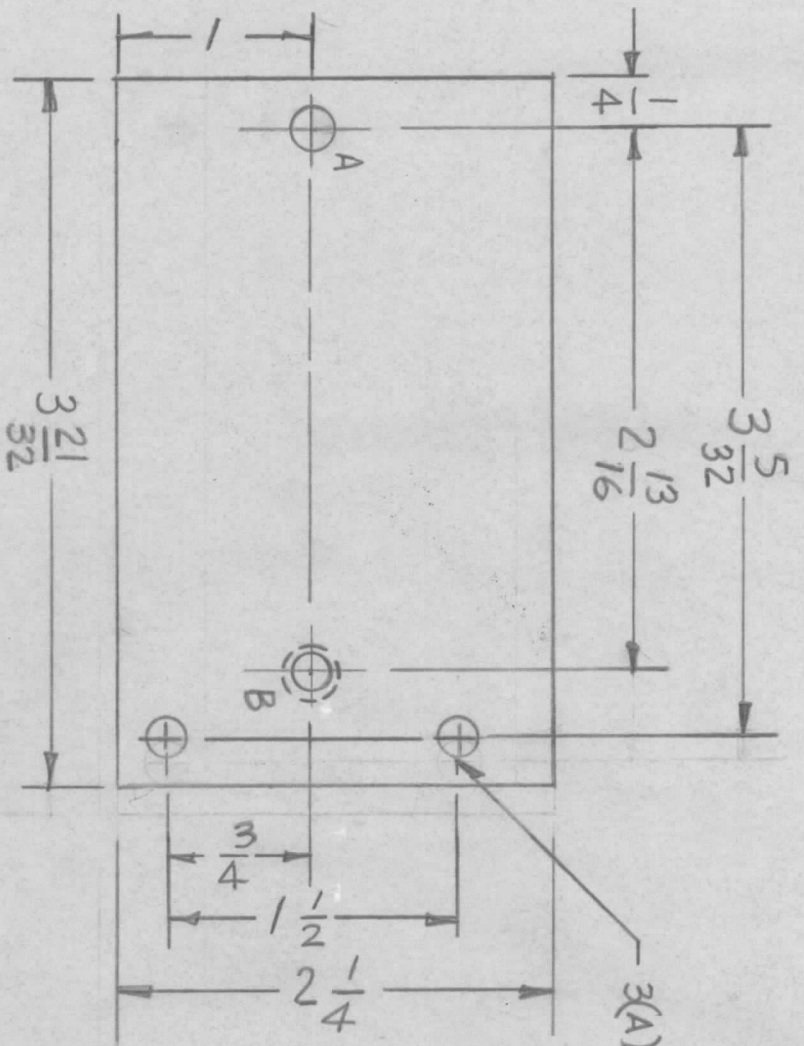
FINAL APPROVAL		DATE	DATE
MECH. DES.	<i>[Signature]</i>		
ELECT. DES.			
CHECKED		DATE	DATE
DRAWN	G.D.L.	5-19-80	

UNLESS OTHERWISE SPECIFIED DIMENSIONS ARE IN INCHES AND INCLUDE CHEMICALLY APPLIED OR PLATED FINISHES	DECIMALS	FRACTIONS	ANGLES
	.X ± .05	1/64	0° - 30°
	.XX ± .01		
	.XXX ± .005		
MATERIAL, 063 THK ALUM 5052-H32			
FINISH 5404			
YEL. IRIDITE			

LIST OF MATERIAL
THE TECHNICAL MATERIEL CORP.
MAMARONECK, NEW YORK
BRACKET, SWITCH

SIZE	B	CODE IDENT. NO.	82679	DWG NO.	MS 7026	ISSUE	C
SCALE	1:1	SHEET		OF			

REVISIONS							
EM.N. NO.	DRAFT	CHKD	ZONE	LTR	DESCRIPTION	DATE	APPROVED
—	dw			Ø	ORIGINAL RELEASE	9-11-80	



UNLESS OTHERWISE SPECIFIED:

1. USE MATERIAL THICKNESS FOR MAXIMUM RADIUS ON ALL BENDS.
2. ALL ANGULAR BENDS 90 DEGREES.
3. REMOVE ALL BURRS AND SHARP EDGES.
4. MOUNT INSERTS AFTER FINISHING.

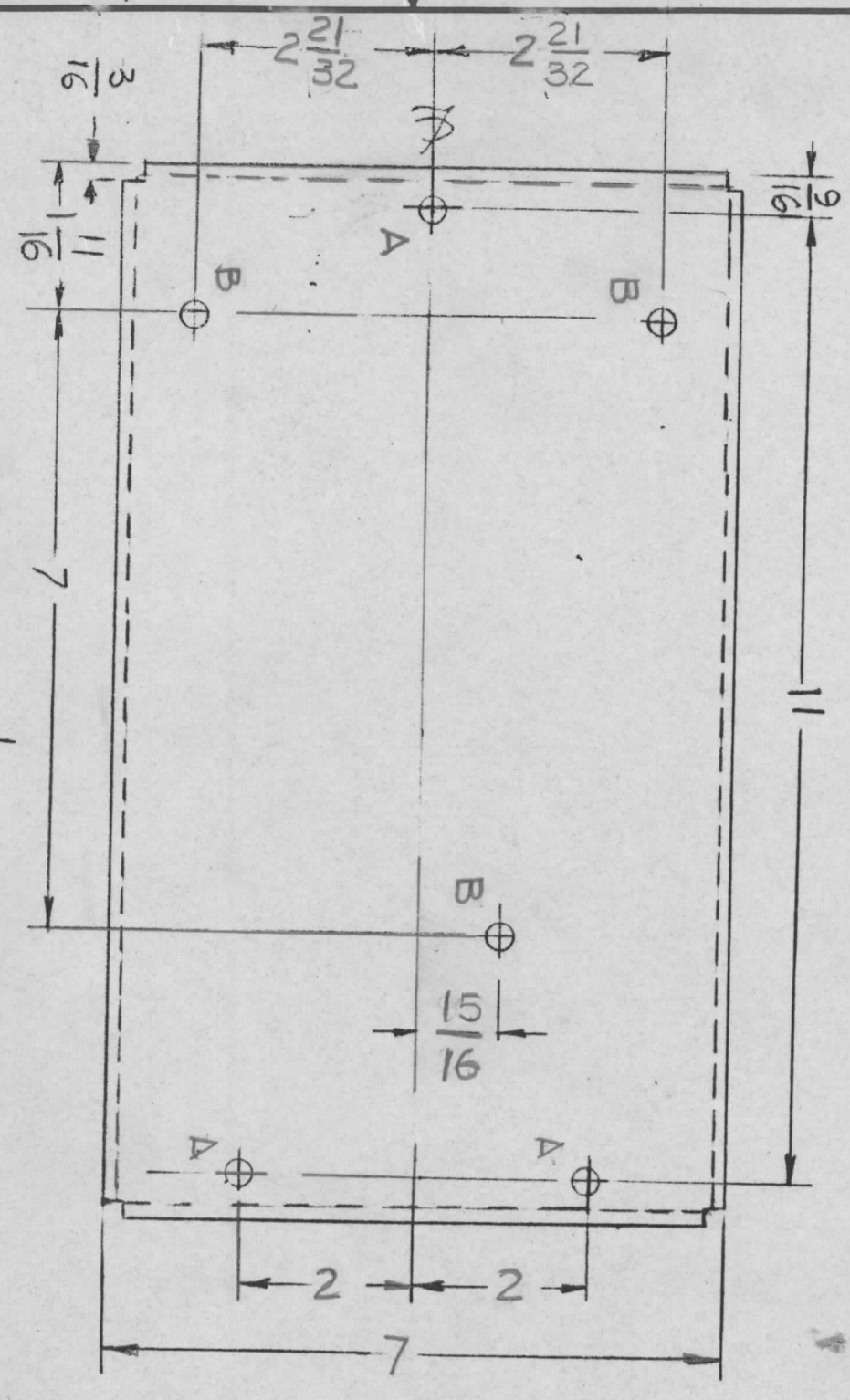
REQ'D	ITEM	PART NUMBER	DESCRIPTION	SYM.
			LIST OF MATERIAL	
<p align="center">THE TECHNICAL MATERIEL CORP. MAMARONECK, NEW YORK</p> <p align="center"><i>PLATE, MOUNTING for TIMER</i></p>				
FINAL APPROVAL		DATE	SIZE	
MECH. DES.		9-11-80	B	
ELECT. DES.			CODE IDENT. NO.	DWG NO.
CHECKED			82679	M57031
DRAWN		8-21-80	SCALE	SHEET
				OF
MATERIAL		DATE	ISSUE	
ALUM AL 5052-H32		8-21-80	Ø	
FINISH				
YEL IRIDITE				

QTY / UNIT	MODEL USED ON	ASS'Y NO.
1	A5783	
APPLICATION		
CODE		

NOTICE TO PERSONS RECEIVING THIS DRAWING
 THE TECHNICAL MATERIEL CORPORATION claims proprietary right in the material disclosed hereon. This drawing is issued in confidence for engineering information only and may not be reproduced or used to manufacture anything shown hereon without permission from THE TECHNICAL MATERIEL CORPORATION to the user. This drawing is loaned for mutual assistance and is subject to recall at any time.

REVISIONS							
EMN NO.	DRAFT	CHKD	ZONE	LTR	DESCRIPTION	DATE	APPROVED
	5.0.			Ø	ORIGINAL RELEASE FOR PRODUCTION	12-8-80	

HOLES:
 A - 7/16 DIA 3 HOLES
 B - 3/8 DIA 3 HOLES



MARK TMC P/NO. 1/8 HIGH
 GOTHIC W/LATEST REV.
 LETTER.

QTY / UNIT	1	MODEL USED ON	GPT-40K	ASSY NO.	A584
APPLICATION					
CODE					

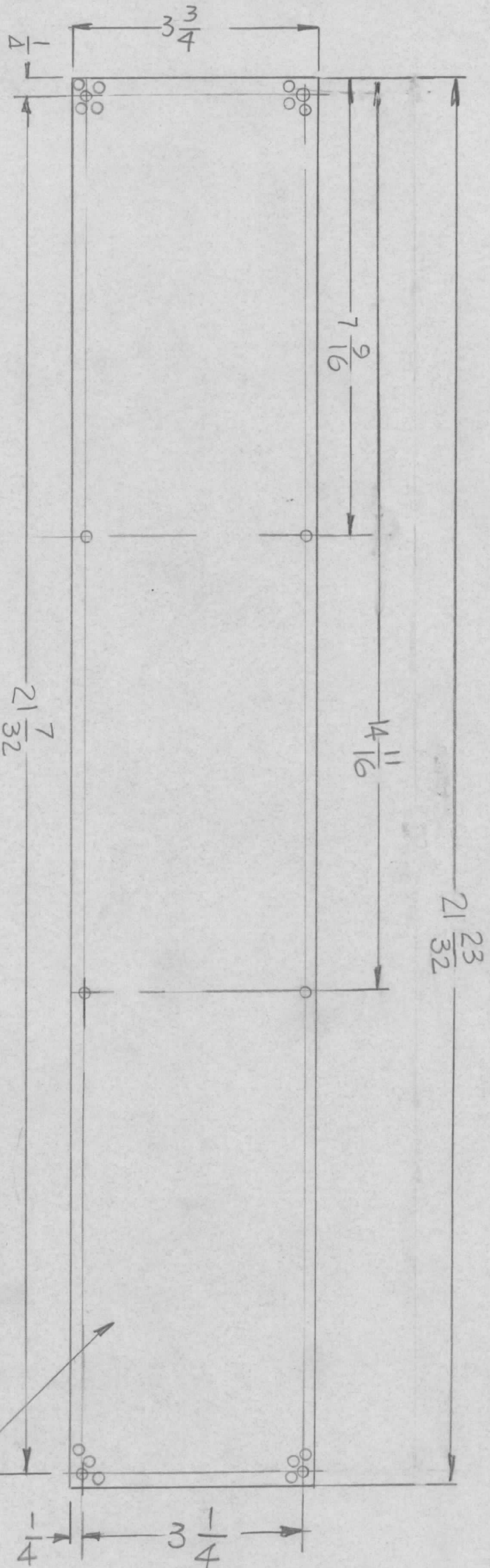
NOTICE TO PERSONS RECEIVING THIS DRAWING
 THE TECHNICAL MATERIEL CORPORATION claims proprietary right in the material disclosed hereon. This drawing is issued in confidence for engineering information only and may not be reproduced or used to manufacture anything shown hereon without permission from THE TECHNICAL MATERIEL CORPORATION to the user. This drawing is loaned for mutual assistance and is subject to recall at any time.

REQ'D	ITEM	PART NUMBER	DESCRIPTION	SYM.
			THE TECHNICAL MATERIEL CORP. MAMARONECK, NEW YORK	

UNLESS OTHERWISE SPECIFIED DIMENSIONS ARE IN INCHES AND INCLUDE CHEMICALLY APPLIED OR PLATED FINISHES		FINAL APPROVAL		DATE	
DECIMALS	TOLS.	MECH. DES.	DATE	ELECT. DES.	DATE
.X ± .05	1/64	CHECKED			
.XX ± .01	ANGLES	DRAWN			
.XXX ± .005	0° - 30'				
MATERIAL 1/8THK ALUM 5052-H32		DRAWN G.D.L.		DATE 12-8-80	
FINISH 5404 YEL. IRIDITE					

LIST OF MATERIAL	DESCRIPTION	SYM.
THE TECHNICAL MATERIEL CORP. MAMARONECK, NEW YORK	PLATE, MTG RELAY PL 138-3	
SIZE B	CODE IDENT. NO. 82679	DWG NO. MS7058
SCALE 1/2		ISSUE

REVISIONS							
EMN. NO.	DRAFT	CHKD	ZONE	LTR	DESCRIPTION	DATE	APPROVED
				X2	DIM 21 23/32 WAS 21 29/32 & 21 7/32 WAS 22 1/16	11-23-81	
2110	AB			Ø	ORIGINAL RELEASE FOR PRODUCTION	3/19/83	



PERFORATE AREA 5/32 DIA
HOLES ON 3/16 CENTERS
STAGGERED

REQ'D	ITEM	PART NUMBER	DESCRIPTION	SYM.
			LIST OF MATERIAL	

THE TECHNICAL MATERIEL CORP.
MAMARONECK, NEW YORK

PLATE, COVER

QTY / UNIT	1	MODEL USED ON	LPPFA-20K	ASSY. NO.	
APPLICATION		CODE			

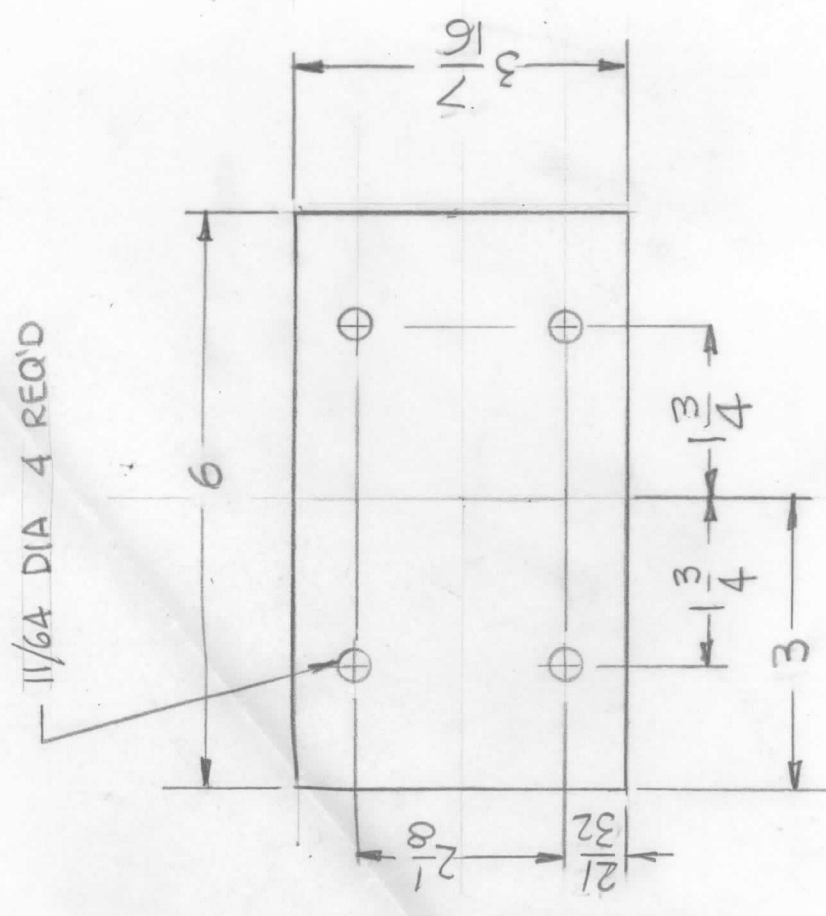
DECIMALS	TOLS.	FRACTIONS	ANGLES	MECH. DES.	DATE
.X ± .05	.XX ± .01	1/64	0° - 30'		
.XXX ± .005				CHECKED	DATE
				DRAWN	DATE
MATERIAL 064THK		PERFORATE PLATE		G.D.L.	
ALUM 5052H32		FINISH S 520		11-3-81	
TEX. PAINT					

SIZE	CODE IDENT. NO.	DWG NO.	SHEET	OF
B	82679	MS 7068		
SCALE	1/2			
ISSUE				

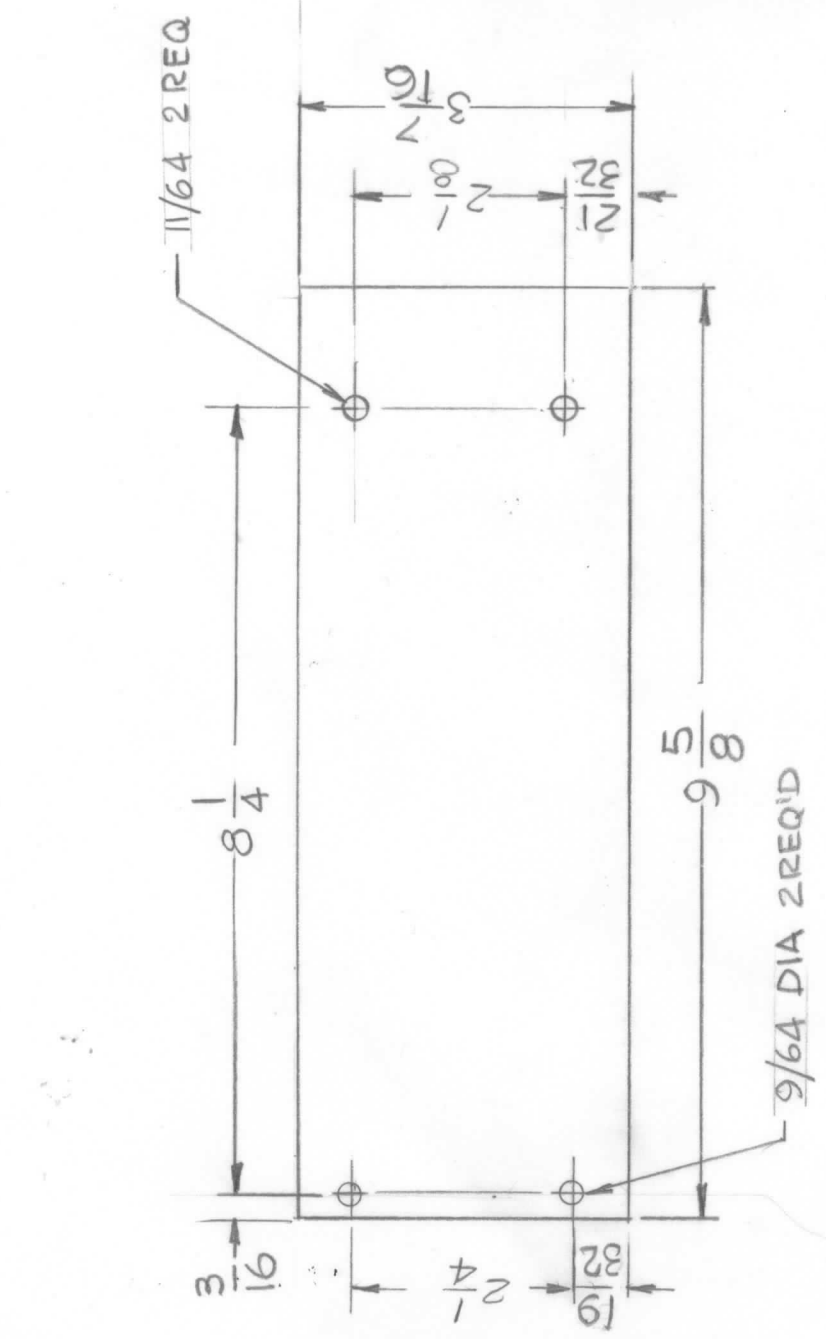
NOTICE TO PERSONS RECEIVING THIS DRAWING
THE TECHNICAL MATERIEL CORPORATION claims proprietary right in the material disclosed hereon. This drawing is issued in confidence for engineering information only and may not be reproduced or used to manufacture anything shown hereon without permission from THE TECHNICAL MATERIEL CORPORATION to the user. This drawing is loaned for mutual assistance and is subject to recall at any time.

1 2 3 4 5

REVISIONS		DATE		APPROVED	
E.M.N. NO.	DRAFT	CHKD	ZONE	LTR	DESCRIPTION



MS - 1 (1 REQ)



MS - 2 (1 REQ)

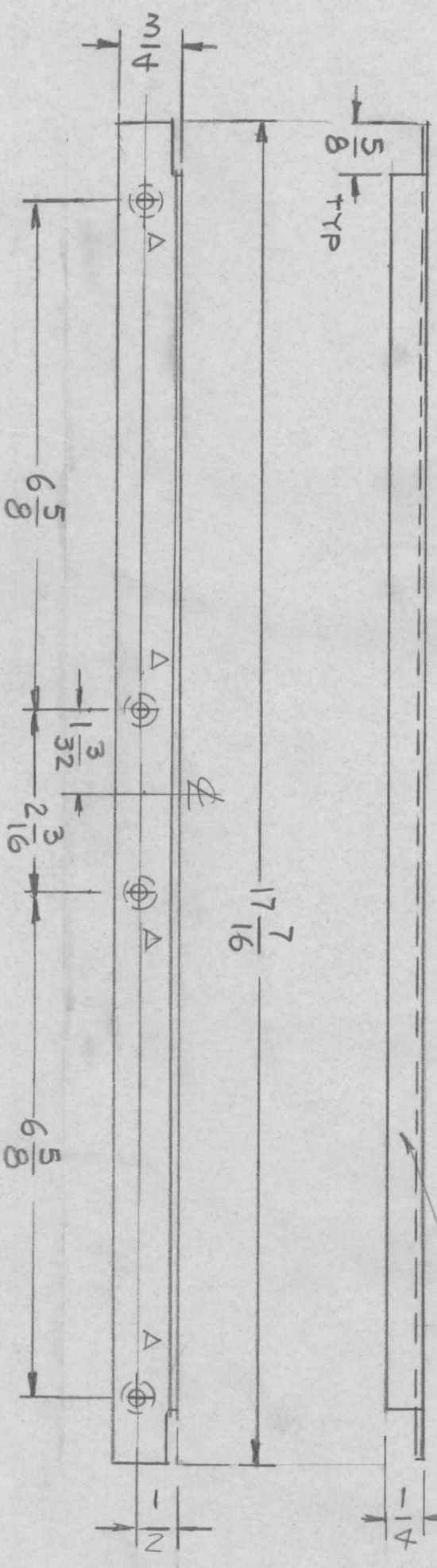
FINISH NOTE:

- 1. S404 - IRIDITE 14-2 AL-COAT.
 - 2. S114 - ZINC CHROMATE PRIMER
 - 3. S115 - SMOOTH GRAY ENAMEL
- FRONT AND EDGES ONLY
- OR
- PRIME AND PAINT PER CUSTOMER'S SPECIFICATIONS

NOTICE TO PERSONS RECEIVING THIS DRAWING
 THE TECHNICAL MATERIEL CORPORATION claims proprietary right in the material disclosed hereon. This drawing is issued in confidence for engineering information only and may not be reproduced or used to manufacture anything shown hereon without permission from THE TECHNICAL MATERIEL CORPORATION to the user. This drawing is loaned for mutual assistance and is subject to recall at any time.

REQ'D ITEM	PART NUMBER	DESCRIPTION	SYM.
LIST OF MATERIAL			
THE TECHNICAL MATERIEL CORP. MAMARONECK, NEW YORK			
FINAL APPROVAL	DATE	DATE	DATE
MECH. DES.	DATE	DATE	DATE
ELECT. DES.	DATE	DATE	DATE
CHECKED	DATE	DATE	DATE
DRAWN	G.D.L.	DATE	12-11-80
UNLESS OTHERWISE SPECIFIED DIMENSIONS ARE IN INCHES AND INCLUDE CHEMICALLY APPLIED OR PLATED FINISHES	DECIMALS .X ± .05 .XX ± .01 .XXX ± .005		
FRACTIONS 1/64 ANGLES 0°-30'			
MATERIAL .051 THK			
ALUM - 5052 -H32			
FINISH SEE NOTF			
SIZE	CODE IDENT. NO.	DWG NO.	ISSUE
B	82679	MS 7070	X
SCALE	1/2	SHEET	OF
		1	1

REVISIONS				DATE	APPROVED
E.M.N. NO.	DRAFT	CHKD	ZONE	LTR	DESCRIPTION
	GDL				ORIGINAL RELEASE FOR PROD. 1-11-83



MARK TMC P/NO. 1/B HIGH GOTTHIC WITH LATEST REV. LETTER.

HOLE -
A. .144 DIA C/SNK 82° TO .284
AREQID

FINISH -
FINISH AS PER TMC SPECIFICATIONS S1366
SEMI-GLOSS LIGHT GRAY BAKING ENAMEL
MIL-E-15090 REV. B TYPE 3 CLASSE 2

QTY / UNIT	8	SYM-5211	SURVIVANCE
MODEL USED ON	APPLICATION		
ASS'Y NO.	CODE		

UNLESS OTHERWISE SPECIFIED DIMENSIONS ARE IN INCHES AND INCLUDE CHEMICALLY APPLIED OR PLATED FINISHES	DECIMALS	FRACTIONS
X ± .05	1/64	
XX ± .01	TOLS.	ANGLES
.XXX ± .005		0° - 30'

MATERIAL	.064 THK ALUM. 5052-H32
FINISH	SEE NOTE

REQ'D	ITEM	PART NUMBER	DESCRIPTION	SYM.
			BRACKET, Unit Divider	

LIST OF MATERIAL

THE TECHNICAL MATERIEL CORP.
MAMARONECK, NEW YORK

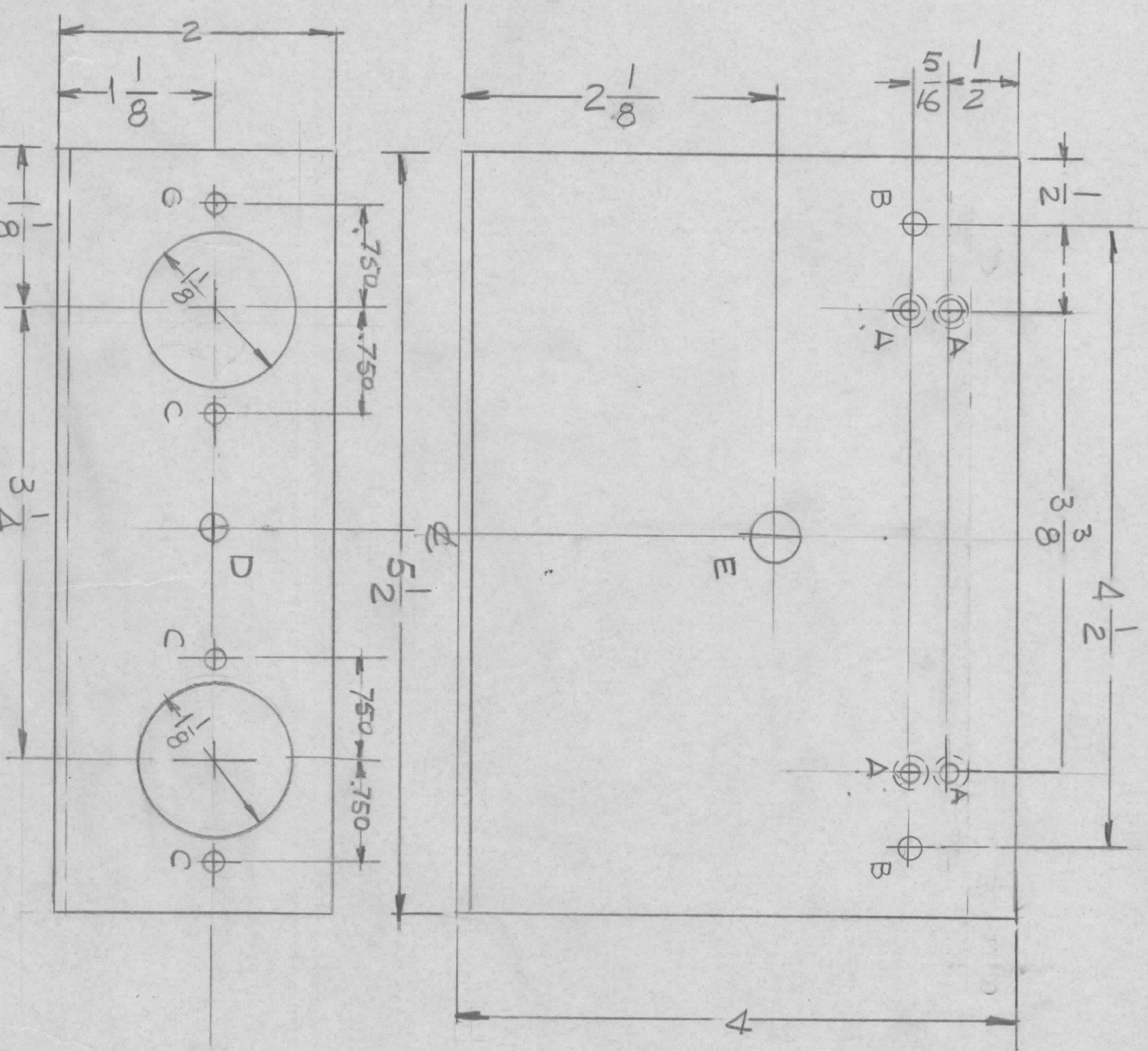
NOTICE TO PERSONS RECEIVING THIS DRAWING
THE TECHNICAL MATERIEL CORPORATION claims proprietary right in the material disclosed hereon. This drawing is issued in confidence for engineering information only and may not be reproduced or used to manufacture anything shown hereon without permission from THE TECHNICAL MATERIEL CORPORATION to the user. This drawing is loaned for mutual assistance and is subject to recall at any time.

SCALE 1/2

DATE 7-31-82

SIZE B
CODE IDENT. NO. 82679
DWG NO. MS 7089
SHEET OF

REVISIONS			DATE	APPROVED	
E.M.N. NO.	DRAFT	CHKD	ZONE	LTR	DESCRIPTION



- HOLE LIST
- A - .120 C/SINK 82° TO .230 DIA 4 REQ'D
 - B - 11/64 DIA 2 REQ'D
 - C - 5/32 DIA 4 REQ'D
 - D - 13/64 DIA -
 - E - 3/8 DIA -

REQ'D ITEM	PART NUMBER	DESCRIPTION	SYM.
LIST OF MATERIAL			

THE TECHNICAL MATERIEL CORP.
MAMARONECK, NEW YORK

BRACKET MTG RELAY

FINAL APPROVAL	MECH. DES.	DATE	DATE	DATE	DATE	DATE	DATE	DATE	DATE

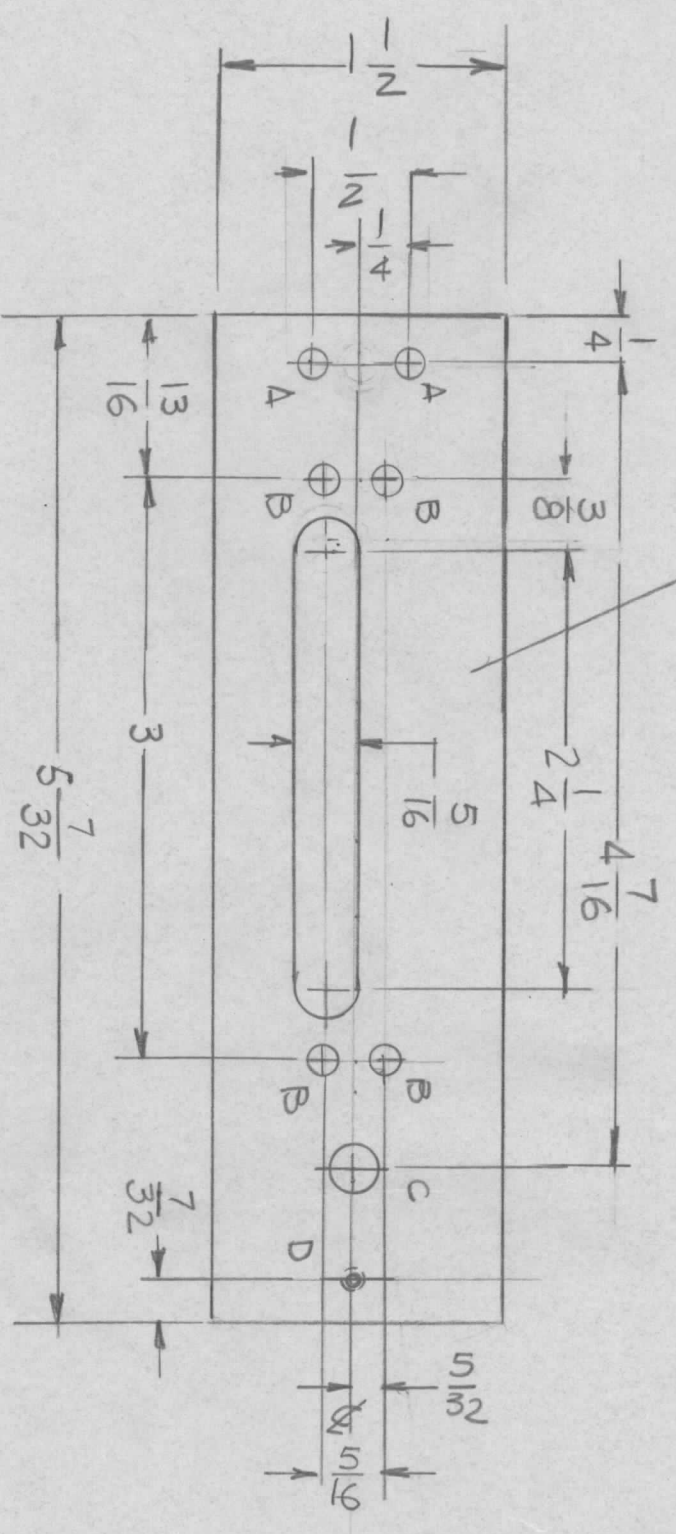
DECIMALS	FRACTIONS	TOLS.	ANGLES
.X ± .05	1/64		0° .30'
.XX ± .01			
.XXX ± .005			

QTY / UNIT	MODEL USED ON	ASS'Y NO.
1	GPT-10K	

UNLESS OTHERWISE SPECIFIED:
 1. USE MATERIAL THICKNESS FOR MAXIMUM RADIUS ON ALL BENDS.
 2. ALL ANGULAR BENDS 90 DEGREES.
 3. REMOVE ALL BURRS AND SHARP EDGES.
 4. MOUNT INSERTS AFTER FINISHING.

REVISIONS				DATE	APPROVED
E.M.N. NO.	DRAFT	CHKD	ZONE	LTR	DESCRIPTION
	G.D.L.			Ø	ORIG. RELEASE FOR PROD.

MARK TMC P/NO 1/8 HIGH WITH LATEST REV. LETTER ON REAR



- HOLES
- A - 9/64 DIA 2 REQ'D
 - B - 11/64 DIA 4 REQ'D
 - C - 3/8 DIA 1 REQ'D
 - D - DRILL & TAP FOR 6-32 THD

- FINISH NOTES:
- 1- S404 - IRIDITE 14-2 AL-COAT
 - 2- ASTM SPECIFICATIONS S1365 SEMI GLASS LIGHT GREY BECKING ENAMEL

(REF)
LD3144 USED ON AX5257
LD3145 USED ON AX5254

QTY / UNIT	1	AX 5257	RCST-2
MODEL USED ON	AX 5254	RCST-2	
APPLICATION			
CODE			

UNLESS OTHERWISE SPECIFIED DIMENSIONS ARE IN INCHES AND INCLUDE CHEMICALLY APPLIED OR PLATED FINISHES	
DECIMALS	FRACTIONS
.X ± .05	1/64
.XX ± .01	TOLS. ANGLES
.XXX ± .005	0° - 30°
MATERIAL	OBTRK
ALUM. 6052-H32	
FINISH	SEE NOTE

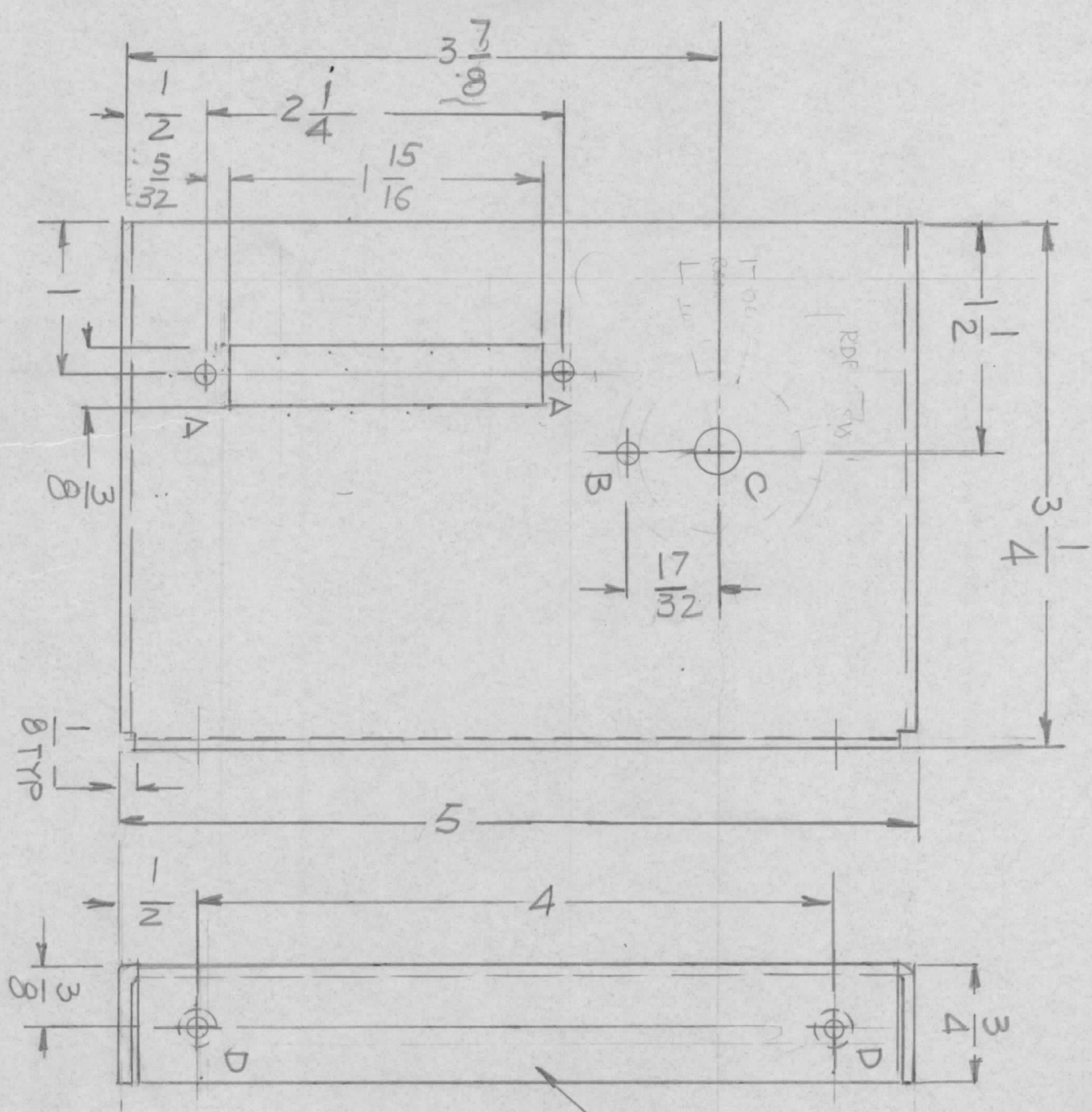
REQ'D ITEM	PART NUMBER	DESCRIPTION	SYM.
ENG. S. DEMARCO		LIST OF MATERIAL	

THE TECHNICAL MATERIEL CORP.
MAMARONECK, NEW YORK

FINAL APPROVAL	DATE		
MECH. DES.	DATE		
ELECT. DES.	DATE		
CHECKED	DATE		
DRAWN	DATE		
SIZE	CODE IDENT. NO.	DWG NO.	ISSUE
B	82679	MS 7092	Ø
SCALE	1"=1"	SHEET	OF

PLATE, ADAPTER

REVISIONS				DATE	APPROVED
EMN NO.	DRAFT	CHKD	ZONE	LTR	DESCRIPTION
	GDL				ORIGINAL RELEASE FOR PRODUCTION
					1-5-83



- UNLESS OTHERWISE SPECIFIED:
1. USE MATERIAL THICKNESS FOR MAXIMUM RADIUS ON ALL BENDS.
 2. ALL ANGULAR BENDS 90 DEGREES.
 3. REMOVE ALL BURRS AND SHARP EDGES.
 4. MOUNT INSERTS AFTER FINISHING.

QTY / UNIT	1	MODEL USED ON	AX5255	ASS'Y NO.	
APPLICATION		CODE			

NOTICE TO PERSONS RECEIVING THIS DRAWING
 THE TECHNICAL MATERIEL CORPORATION claims proprietary right in the material disclosed hereon. This drawing is issued in confidence for engineering information only and may not be reproduced or used to manufacture anything shown hereon without permission from THE TECHNICAL MATERIEL CORPORATION to the user. This drawing is loaned for mutual assistance and is subject to recall at any time.

UNLESS OTHERWISE SPECIFIED DIMENSIONS ARE IN INCHES AND INCLUDE CHEMICALLY APPLIED OR PLATED FINISHES	DECIMALS	FRACTIONS
.X ± .05	1/64	
.XX ± .01		ANGLES
.XXX ± .005		0° - 30'
MATERIAL	ALUM. 6052-H32	FINISH
	081THK	S404
		YEL. IRIDITE

REQ'D	ITEM	PART NUMBER	DESCRIPTION	SYM.
2	1	NT129-06324	NUT ROUND	

ENG. S. DE MARCO	DATE	1-5-83
MECH. DES.	DATE	8-9-82
ELECT. DES.	DATE	
CHECKED	DATE	
DRAWN	DATE	

THE TECHNICAL MATERIEL CORP.	SIZE	CODE IDENT. NO.	DWG NO.	ISSUE
MAMARONECK, NEW YORK	B	82679	MS 7096	
BRACKET MTG. SW	SCALE	1:1	SHEET	OF

- HOLES
- A - 11/64 DIA 2 REQ'D
 - B - 9/64 DIA
 - C - 13/32 DIA
 - D - .191-.194 DIA 2 REQ'D