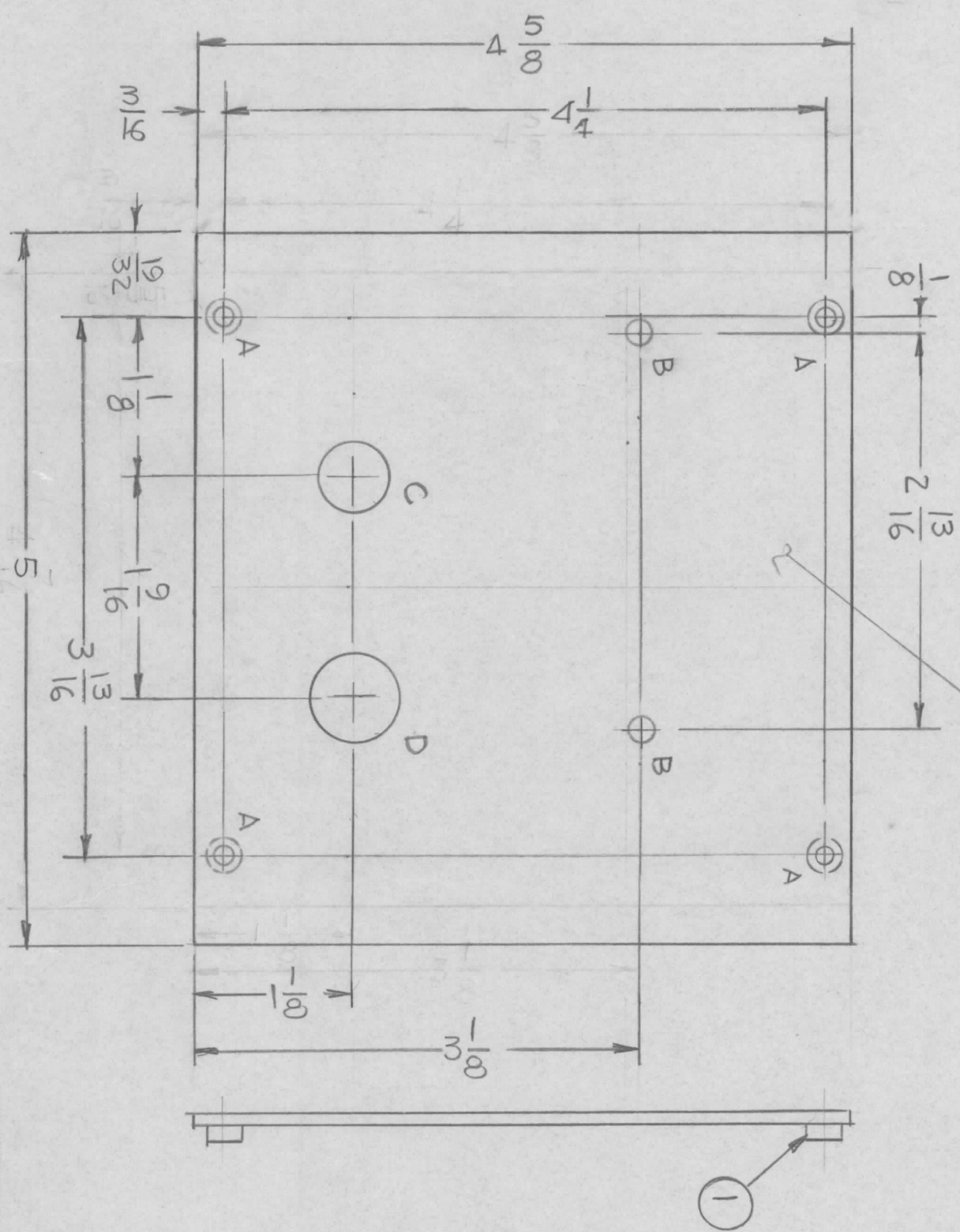


REVISIONS				DATE	APPROVED
EM.N. NO.	DRAFT	CHKD	ZONE	LTR	DESCRIPTION

MARK TMC PART NUMBER
1/8 HIGH GOTHIC WITH LATE^o
REVISION LETTER ON REAR



- HOLES:
- A - .191 - .194 DIA 4REQ
 - B - 3/16 DIA 2REQ
 - C - 1/2 DIA
 - D - 5/8 DIA

REQ'D	ITEM	PART NUMBER	DESCRIPTION	SYM.
4	1	NT129-0632-4	NUT, ROUND	A

LIST OF MATERIAL

THE TECHNICAL MATERIEL CORP.
MAMARONECK, NEW YORK

PLATE, MTG XMFR

QTY / UNIT	1	MODEL USED ON	CFS-4	ASS'Y NO.	
APPLICATION		CODE			

UNLESS OTHERWISE SPECIFIED DIMENSIONS ARE IN INCHES AND INCLUDE CHEMICALLY APPLIED OR PLATED FINISHES	FINAL APPROVAL	DATE
MECH. DES.		
ELECT. DES.		
CHECKED		
DRAWN	G.D.L.	DATE 7-25-78

DECIMALS	FRACTIONS	ANGLES
.X ± .05	1/64	0° - 30'
.XX ± .01		
.XXX ± .005		
MATERIAL		
ALUM 5052-H32		
FINISH		
5404 YEL/DI/DTE		
SIZE	CODE IDENT. NO.	DWG. NO.
B	82679	MS 6929
SCALE	1:1	SHEET
		OF
		ISSUE
		X

NOTICE TO PERSONS RECEIVING THIS DRAWING
THE TECHNICAL MATERIEL CORPORATION claims proprietary right in the material disclosed hereon. This drawing is issued in confidence for engineering information only and may not be reproduced or used to manufacture anything shown hereon without permission from THE TECHNICAL MATERIEL CORPORATION to the user. This drawing is loaned for mutual assistance and is subject to recall at any time.