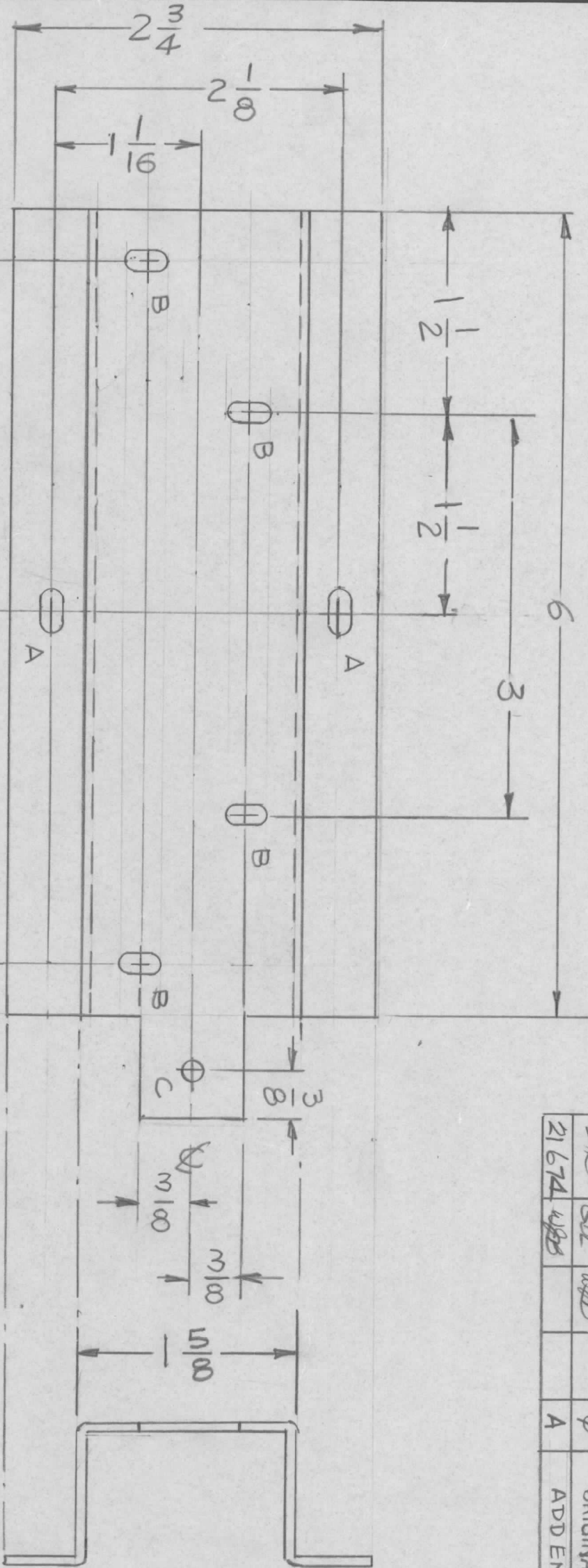


| REVISIONS  |       |      |      | DATE | APPROVED                        |
|------------|-------|------|------|------|---------------------------------|
| E.M.N. NO. | DRAFT | CHKD | ZONE | LTR  | DESCRIPTION                     |
| 21674      | WBS   | WBS  |      | Ø    | ORIGINAL RELEASE FOR PRODUCTION |
|            |       |      |      | A    | ADD END VIEW $\frac{1}{8}$ DIM. |
|            |       |      |      |      | 8-16-78                         |
|            |       |      |      |      | 8-18-78                         |



HOLES:  
 A - 11/64 X 11/32 2 REQ'D  
 B - 5/32 X 5/16 4 REQ'D  
 C - 11/64 DIA

UNLESS OTHERWISE SPECIFIED:  
 1. USE MATERIAL THICKNESS FOR MAXIMUM RADIUS ON ALL BENDS.  
 2. ALL ANGULAR BENDS 90 DEGREES.  
 3. REMOVE ALL BURRS AND SHARP EDGES.  
 4. MOUNT INSERTS AFTER FINISHING.

MARK TMC PART NUMBER  
 1/8 HIGH GOTHIC WITH 14TEST  
 REVISION LETTER

|             |               |           |
|-------------|---------------|-----------|
| QTY / UNIT  | MODEL USED ON | ASS'Y NO. |
| 1           | DPC-10        |           |
| APPLICATION |               |           |
| CODE        |               |           |

NOTICE TO PERSONS RECEIVING THIS DRAWING  
 THE TECHNICAL MATERIEL CORPORATION claims proprietary right in the material disclosed hereon. This drawing is issued in confidence for engineering information only and may not be reproduced or used to manufacture anything shown hereon without permission from THE TECHNICAL MATERIEL CORPORATION to the user. This drawing is loaned for mutual assistance and is subject to recall at any time.

|   |               |       |           |          |
|---|---------------|-------|-----------|----------|
| UNLESS OTHERWISE SPECIFIED DIMENSIONS ARE IN INCHES AND INCLUDE CHEMICALLY APPLIED OR PLATED FINISHES | DECIMALS      | TOLS. | FRACTIONS | ANGLES   |
|   | .X ± .05      |       | 1/64      |          |
|   | .XX ± .01     |       |           | 90° .30' |
|   | .XXX ± .005   |       |           |          |
| MATERIAL  | .063THK       |       |           |          |
| FINISH  | ALUM 5052-H32 |       |           |          |
| FINISH  | S404          |       |           |          |
| YEL   | IBIDITE       |       |           |          |

| REQ'D ITEM       | PART NUMBER | DESCRIPTION | SYM. |
|------------------|-------------|-------------|------|
| LIST OF MATERIAL |             |             |      |

THE TECHNICAL MATERIEL CORP.  
 MAMARONECK, NEW YORK  
 PLUG, CONNECTOR BRKT

|                |      |       |                 |         |       |
|----------------|------|-------|-----------------|---------|-------|
| FINAL APPROVAL | DATE | SIZE  | CODE IDENT. NO. | DWG NO. | ISSUE |
| MECH. DES.     | DATE | B     | 82679           | MS 6926 | A     |
| ELECT. DES.    | DATE | SCALE | 1:1             | SHEET   | OF    |
| CHECKED        | DATE |       |                 |         |       |
| DRAWN          | DATE |       |                 |         |       |