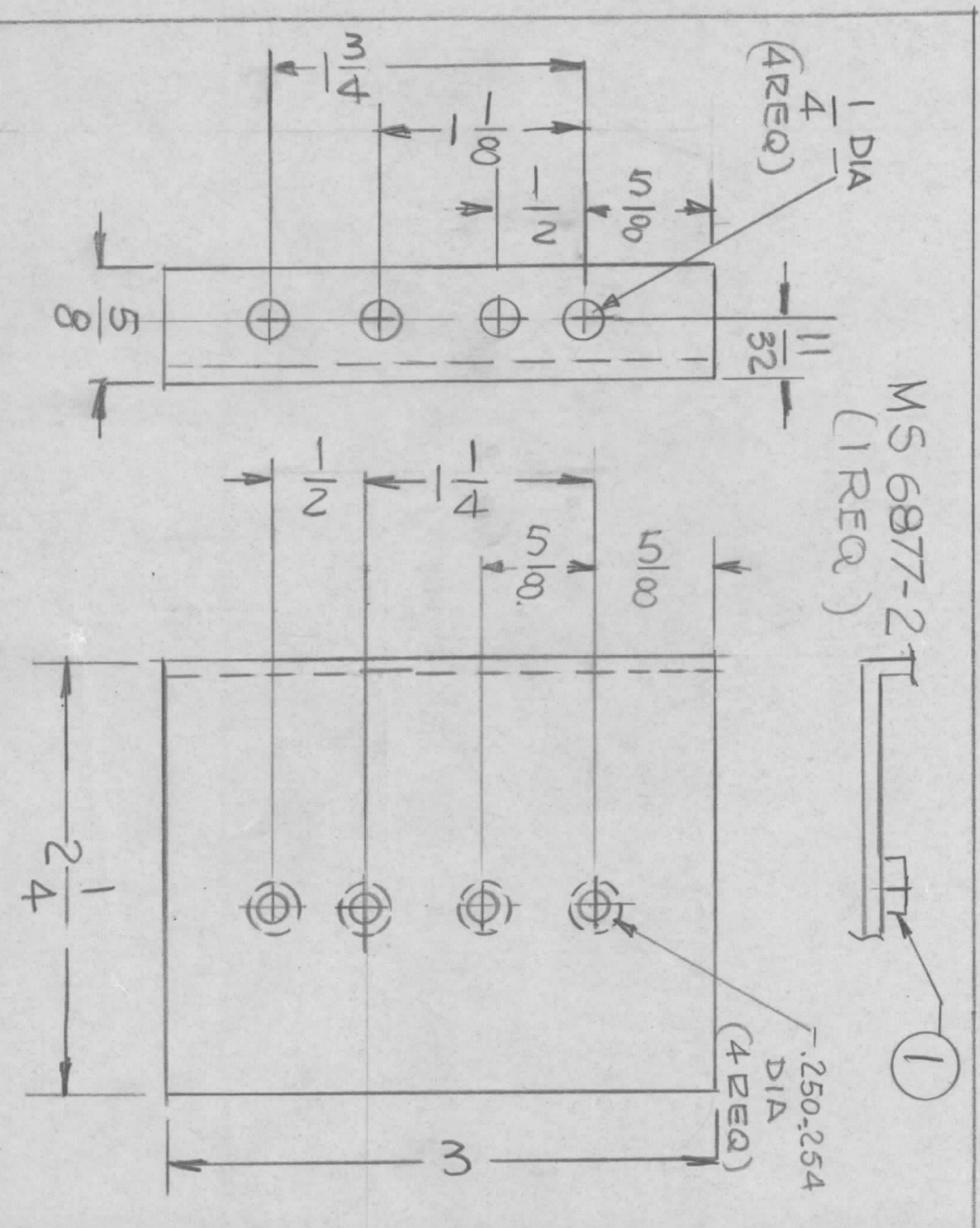
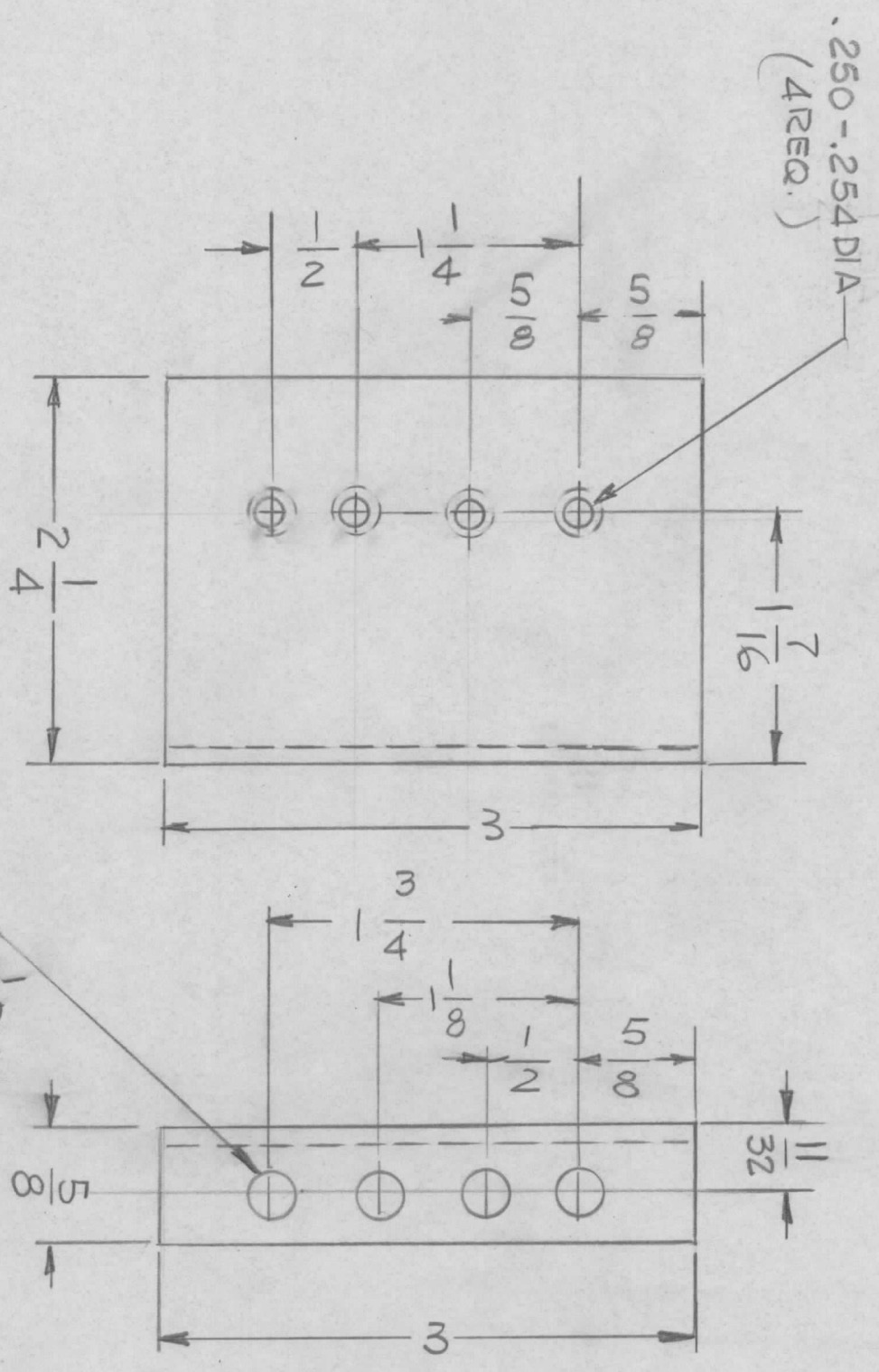
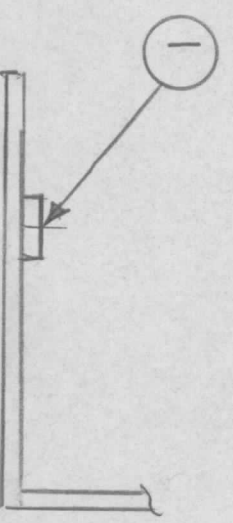


REVISIONS				DATE	APPROVED
EMN. NO.	DRAFT	CHKD	ZONE	LTR	DESCRIPTION
~	GPL	OFFS		Ø	ORIGINAL RELEASE FOR PRODUCTION
					APR 24 1978



MS 6877-1
(1 REQ.)

1/4 DIA
(4 REQ.)

MS 6877-2
(1 REQ.)

UNLESS OTHERWISE SPECIFIED:

- USE MATERIAL THICKNESS FOR MAXIMUM RADIUS ON ALL BENDS.
- ALL ANGULAR BENDS 90 DEGREES.
- REMOVE ALL BURRS AND SHARP EDGES.
- MOUNT INSERTS AFTER FINISHING.

QTY / UNIT	MODEL USED ON	ASS'Y NO.
	TT2-1000J	
APPLICATION		
CODE		

NOTICE TO PERSONS RECEIVING THIS DRAWING
THE TECHNICAL MATERIEL CORPORATION claims proprietary right in the material disclosed hereon. This drawing is issued in confidence for engineering information only and may not be reproduced or used to manufacture anything shown hereon without permission from THE TECHNICAL MATERIEL CORPORATION to the user. This drawing is loaned for mutual assistance and is subject to recall at any time.

UNLESS OTHERWISE SPECIFIED
DIMENSIONS ARE IN INCHES
AND INCLUDE CHEMICALLY APPLIED
OR PLATED FINISHES

DECIMALS	FRACTIONS
X ± .05	1/64
.XX ± .01	ANGLES
.XXX ± .005	0° - 30'

FINISH S404
VELURIDITE

FINAL APPROVAL	DATE
MECH. DES.	DATE
ELECT. DES.	DATE
CHECKED	DATE
DRAWN	DATE

THE TECHNICAL MATERIEL CORP.
MAMARONECK, NEW YORK

LIST OF MATERIAL

REQ'D ITEM	PART NUMBER	DESCRIPTION	SYM.
4	1	NT129-06324 NUT, ROUND	

SIZE	CODE IDENT. NO.	DWG NO.	ISSUE
B	82679	MS 6877	Ø
SCALE	1:1	SHEET	OF