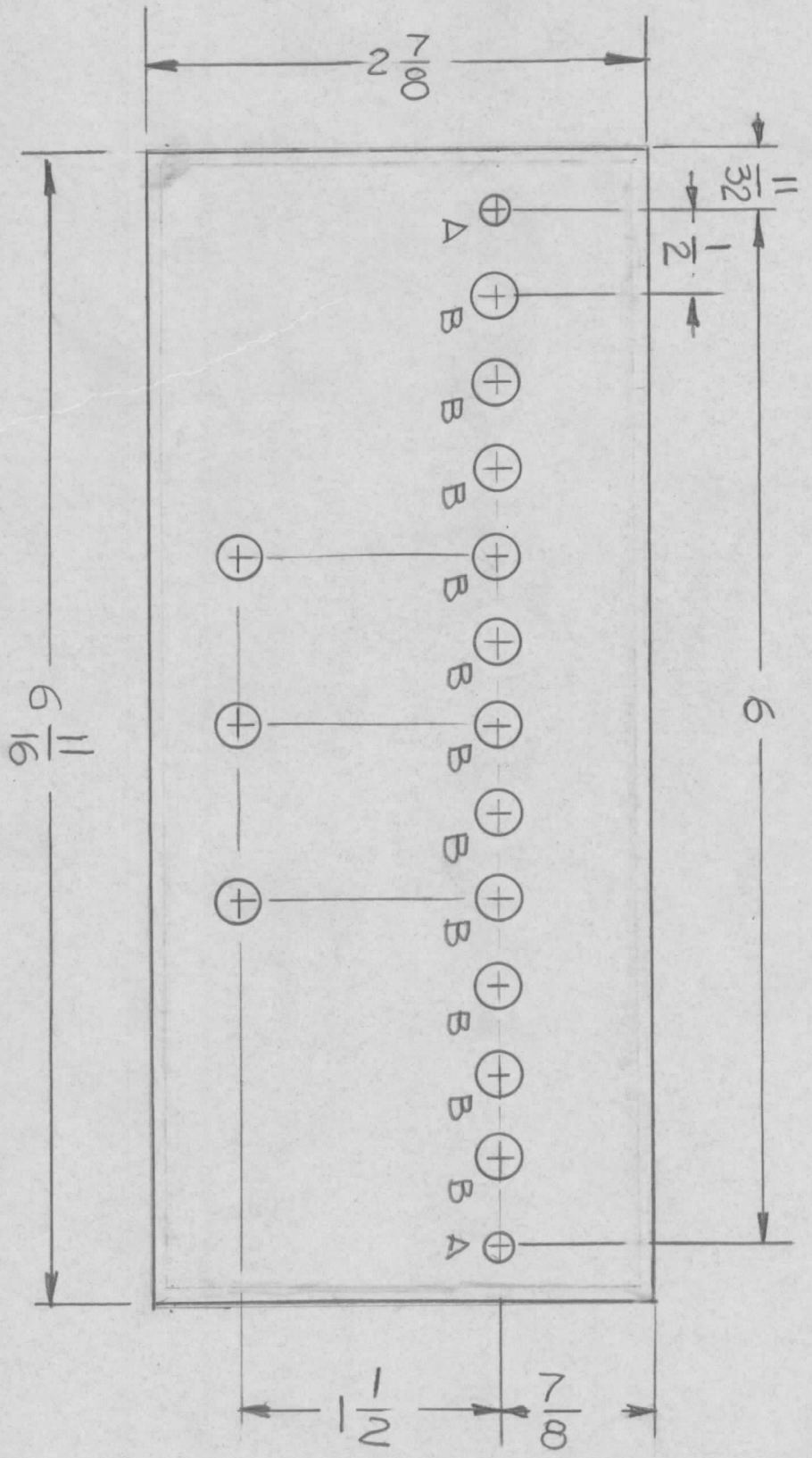


**MACHINING:**

1. MILL ALL EDGES.
2. HOLES MUST BE DRILLED, UNLESS OTHERWISE SPECIFIED.
3. LATERAL BOW OF PANEL MUST BE KEPT TO .031 TOLERANCE.
4. PANEL MUST BE FREE OF ALL MACHINING MARKS, GOUGES AND SCRATCHES. IF NECESSARY, SAND FRONT OF PANEL WITH NO. 120 GRIT SANDPAPER.



**HOLES**  
 A - 11/64 DIA 2 REQ  
 B - 1/4 DIA 11 REQ

REVISIONS				DATE	APPROVED
EM.N. NO.	DRAFT	CHKD	ZONE	LTR	DESCRIPTION
					ORIGINAL RELEASE FOR PRODUCTION
					1-13-78

REQ'D ITEM	PART NUMBER	DESCRIPTION	SYM.
LIST OF MATERIAL			

**THE TECHNICAL MATERIEL CORP.**  
 MAMARONECK, NEW YORK

**PLATE FRONT PANEL ADAPTER**

FINAL APPROVAL	DATE	1-13-77
MECH. DES.	DATE	
ELECT. DES.	DATE	
CHECKED	DATE	
DRAWN	DATE	10-21-76
G.D.L.		
SIZE	CODE IDENT. NO.	DWG NO.
B	82679	MS 6751
SCALE	SHEET	OF

UNLESS OTHERWISE SPECIFIED DIMENSIONS ARE IN INCHES AND INCLUDE CHEMICALLY APPLIED OR PLATED FINISHES

DECIMALS FRACTIONS  
 X ± .05 1/64  
 .XX ± .01 TOLS. ANGLES  
 .XXX ± .005 0° - 30'

MATERIAL .051 THK  
 ALUM 5052-H32

FINISH SEE NOTE

QTY / UNIT	MODEL USED ON	ASSY NO.
	TMA-1KC	
APPLICATION CODE		

*SPECIAL*  
**TMA-1KC**

FINISH NOTES:

1. S404 - IRIDITE 14-2 AL-COAT.
2. S114 - ZINC CHROMATE PRIMER
3. PAINT BLACK MATTE

**NOTICE TO PERSONS RECEIVING THIS DRAWING**  
 THE TECHNICAL MATERIEL CORPORATION claims proprietary right in the material disclosed hereon. This drawing is issued in confidence for engineering information only and may not be reproduced or used to manufacture anything shown hereon without permission from THE TECHNICAL MATERIEL CORPORATION. This drawing is loaned for mutual assistance and is subject to return.