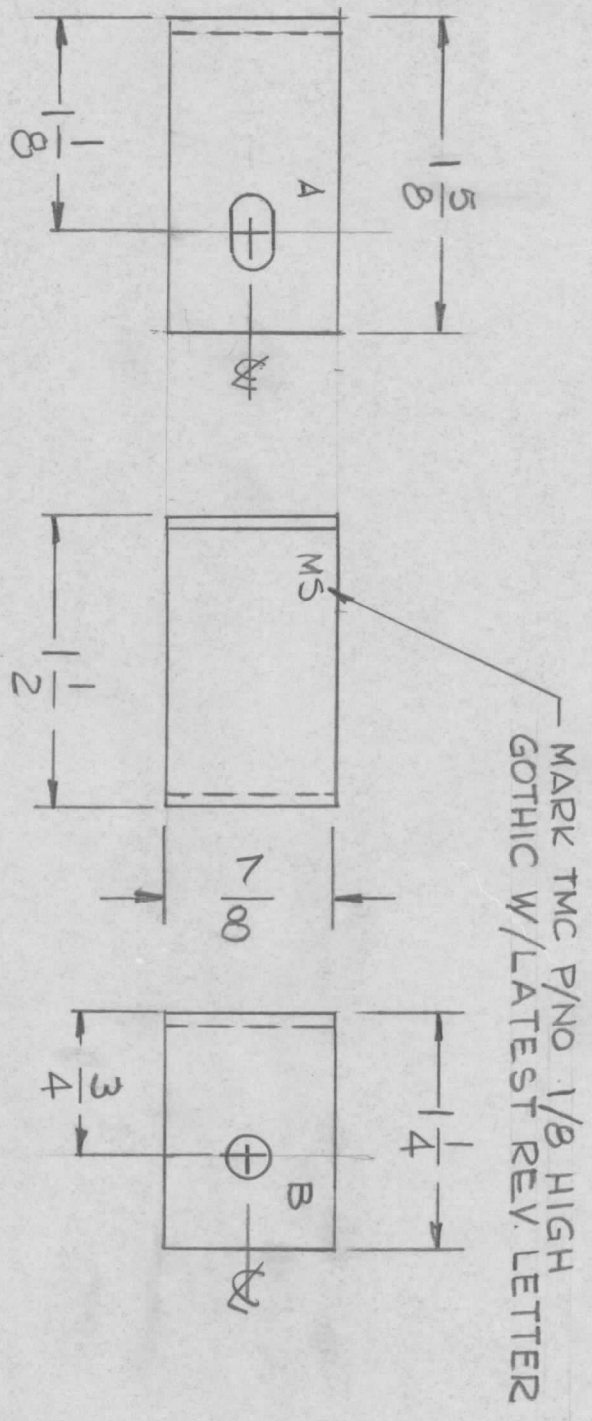


REVISIONS				DATE	APPROVED
EMN. NO.	DRAFT	CHKD	ZONE	LTR	DESCRIPTION
					X EXP RELEASE



UNLESS OTHERWISE SPECIFIED:

1. USE MATERIAL THICKNESS FOR MAXIMUM RADIUS ON ALL BENDS.
2. ALL ANGULAR BENDS 90 DEGREES.
3. REMOVE ALL BURRS AND SHARP EDGES.

HOLES -
A - 7/32 X 3/8 1 REQ
B - 15/64 DIA 1 REQ

QTY / UNIT	2	MODEL USED ON	TOC-3	ASSY NO.	
APPLICATION					
CODE					

NOTICE TO PERSONS RECEIVING THIS DRAWING
THE TECHNICAL MATERIEL CORPORATION claims proprietary right in the material disclosed hereon. This drawing is issued in confidence for engineering information only and may not be reproduced or used to manufacture anything shown hereon without permission from THE TECHNICAL MATERIEL CORPORATION to the user. This drawing is loaned for mutual assistance and is subject to recall at any time.

DECIMALS	.X ± .05	TOLS.	FRACTIONS	1/64
.XX ± .01		ANGLES		0° - 30'
.XXX ± .005				
MATERIAL	AL 5052-H32			
FINISH	S404 YEL IRIDITE			

REQ'D ITEM	PART NUMBER	DESCRIPTION	SYM.
LIST OF MATERIAL			
THE TECHNICAL MATERIEL CORP. MAMARONECK, NEW YORK			
FINAL APPROVAL	DATE		
MECH. DES.	DATE		
ELECT. DES.	DATE		
CHECKED	DATE		
DRAWN	DATE		
DRAWN		GDL 6-27-75	
SIZE	CODE IDENT. NO.	DWG NO.	ISSUE
B	82679	MS 6630	X
SCALE	1:1	SHEET	OF

BRACKET, RETAINER
(GPR-110)