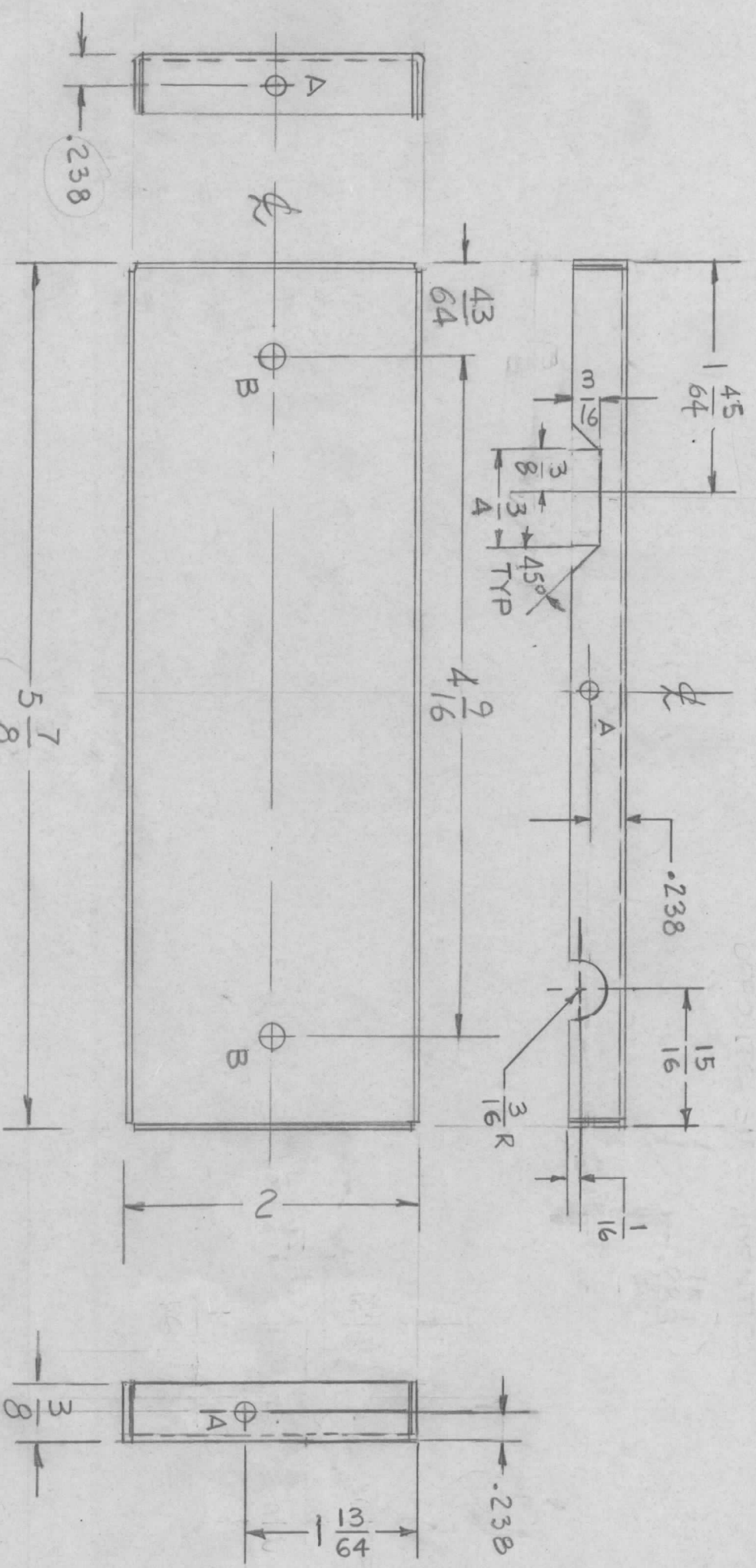


REVISIONS							
EMN. NO.	DRAFT	CHKD	ZONE	LTR	DESCRIPTION	DATE	APPROVED
	GDL			X	EXP. RELEASE		
	W.B.			X1	DIMS. 2" WAS 1 31/32, 5 7/8 WAS 5 27/32	5-23-75	
	G.D.L.			X2	RELOCATE 3/16 R. NOTCH	11-18-76	
				Ø	ORIGINAL RELEASE FOR PRODUCTION	1-25-77	*



UNLESS OTHERWISE SPECIFIED:
 1. USE MATERIAL THICKNESS FOR MAXIMUM RADIUS ON ALL BENDS.
 2. ALL ANGULAR BENDS 90 DEGREES.
 3. REMOVE ALL BURRS AND SHARP EDGES.

HOLE
 A - 9/64 DIA 4 REQ
 B - 11/64 DIA 2 REQ

QTY / UNIT	1	MODEL USED ON	GPR 110	ASS'Y NO.	
APPLICATION		CODE			

NOTICE TO PERSONS RECEIVING THIS DRAWING
 THE TECHNICAL MATERIEL CORPORATION claims proprietary right in the material disclosed hereon. This drawing is issued in confidence for engineering information only and may not be reproduced or used to manufacture anything shown hereon without permission from THE TECHNICAL MATERIEL CORPORATION to the user. This drawing is loaned for mutual assistance and is subject to recall at any time.

REQ'D ITEM	PART NUMBER	DESCRIPTION	SYM.
		LIST OF MATERIAL	

THE TECHNICAL MATERIEL CORP.
 MAMARONECK, NEW YORK
 COVER, SHIELD ANTENNA

UNLESS OTHERWISE SPECIFIED DIMENSIONS ARE IN INCHES AND INCLUDE CHEMICALLY APPLIED OR PLATED FINISHES	FINAL APPROVAL	DATE
DECIMALS .X ± .05	G.D.L.	11/07/77
.XX ± .01	CHECKED	DATE
.XXX ± .005	DRAWN	DATE
FRACTIONS 1/64		4-7-75
ANGLES 0° - 30°		
MATERIAL ALUM 5052-H32		
FINISH YEL IRIDITE		
SIZE B	CODE IDENT. NO. 82679	DWG NO. MS 6614
SCALE 1:1		ISSUE Ø