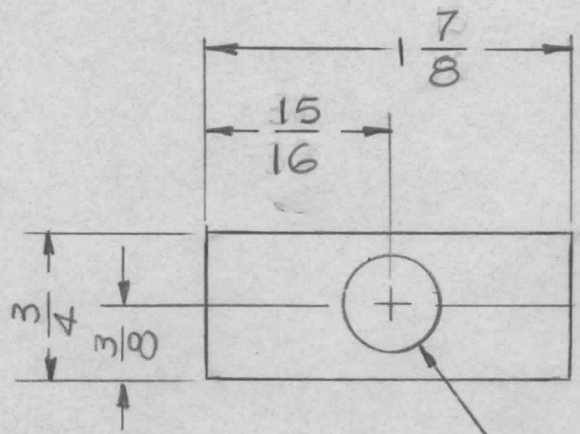
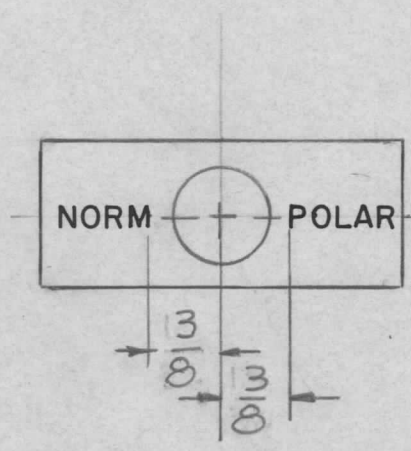


REQ. PER UNIT	USED ON			MS 6604	Ø
	MODEL	ASS'Y. NO.	DATE		
1	KIT-403		2-6-75		

MARKING PROCESS: AS PER TMC SPECIFICATION S727  
 LETTERING: 1/8 HIGH BLACK GOTHIC, LOCATED AS SHOWN



FINISH NOTES 1/2 DIA  
 1-S404- IRIDITE 14-2 AL COAT  
 2-S114 - ZINC CHROMATE PRIMER } FRONT AND  
 3-S115 - SMOOTH GRAY ENAMEL } EDGES ONLY

REQ.	ITEM	PART NO.	DESCRIPTION	SYMBOL						
		051 THK	THE TECHNICAL MATERIEL CORP. MAMARONECK, NEW YORK							
		STOCK SIZE								
Ø	ORIG. REL. FOR PROD	3/4/75	ALUM	PLATE, SW						
X	EXP. RELEASE									
SYM	DESCRIPTION	DATE	CH. NO.	DRAFTS	CHECKER	ENG. APP.	MATERIAL			
UNLESS OTHERWISE SPECIFIED DIMENSIONS ARE IN INCHES AND INCLUDE CHEMICALLY APPLIED OR PLATED FINISHES		SCALE		1:1		5052-H32		G.D.L.	<i>[Signature]</i>	<i>[Signature]</i>
DECIMALS .X ± .05 .XX ± .01 .XXX ± .005	TOLERANCES	FRACTIONS ± 1/64 ANGLES ± 0° 30'	CODE	TYPE & TEMPER		HEAT TREAT. SPEC.		DRAWN	CHECKED	FINAL APPROVAL
				SEE NOTE						MS 6604 Ø
				FINISH & SPEC. NO.		ELEC. DES. APP.		MECH. DES. APP.		