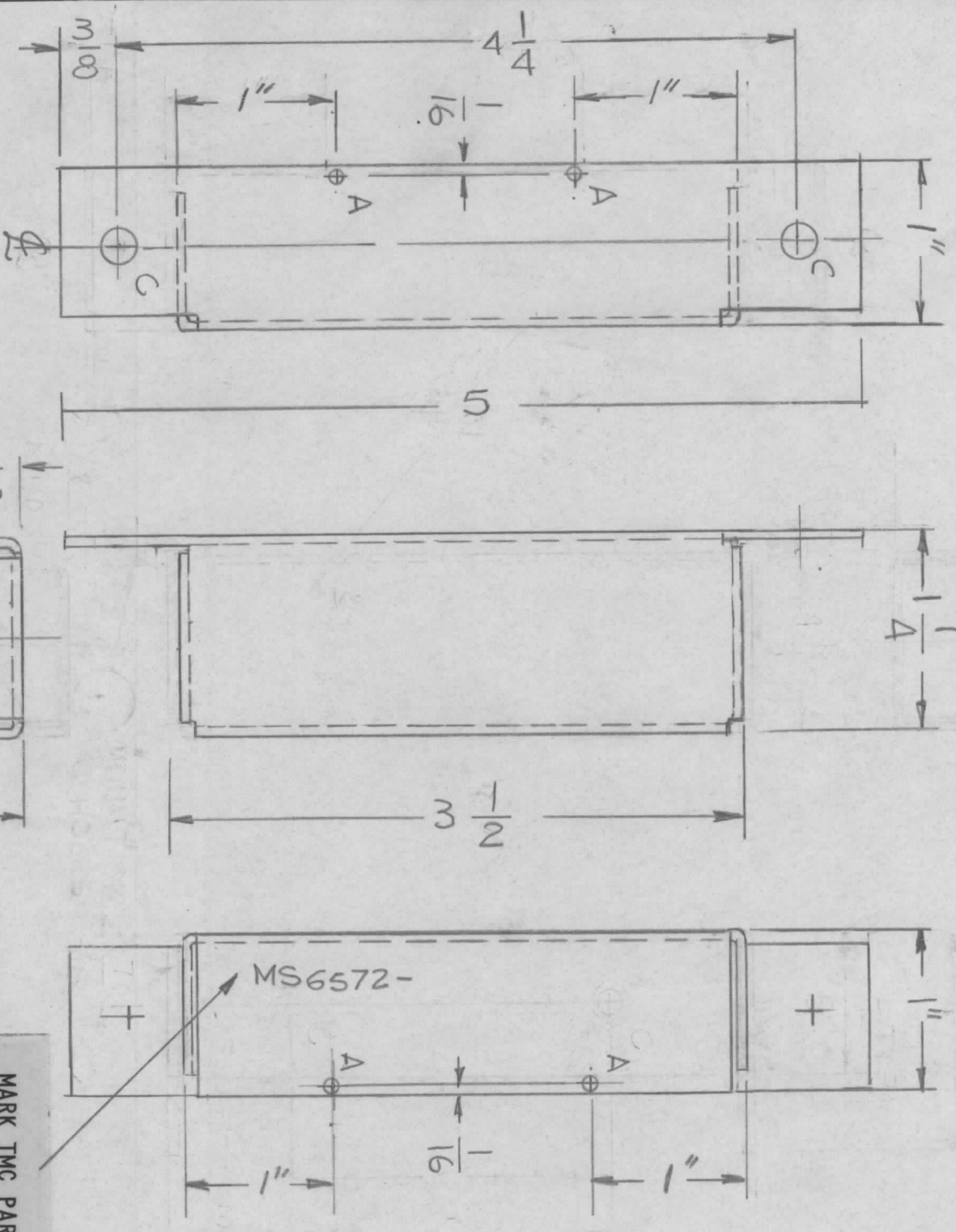
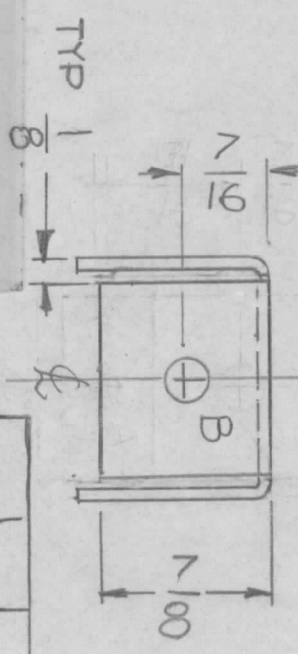


REVISIONS							
E.M.N. NO.	DRAFT	CHKD	ZONE	LTR	DESCRIPTION	DATE	APPROVED
				X1	REDRAWN W/CHANGES	12-2-74	
	CL			Ø	ORIGINAL RELEASE FOR PRODUCTION	3-13-75	



HOLE
 A - .7/64 DIA 2 REQ.
 B - 1/4 DIA 1 REQ.
 C - 15/64 DIA 2 REQ

MARK TMC PART NUMBER
 1/8 HIGH GOTHIC WITH LATEST
 REVISION LETTER



UNLESS OTHERWISE SPECIFIED:

1. USE MATERIAL THICKNESS FOR MAXIMUM RADIUS ON ALL BENDS.
2. ALL ANGULAR BENDS 90 DEGREES.
3. REMOVE ALL BURRS AND SHARP EDGES.
4. MOUNT INSERTS AFTER FINISHING.

QTY / UNIT	1	MODEL USED ON	A5611	ASS'Y NO.	
APPLICATION		CODE			

NOTICE TO PERSONS RECEIVING THIS DRAWING
 THE TECHNICAL MATERIEL CORPORATION claims proprietary right in the material disclosed hereon. This drawing is issued in confidence for engineering information only and may not be reproduced or used to manufacture anything shown hereon without permission from THE TECHNICAL MATERIEL CORPORATION to the user. This drawing is loaned for mutual assistance and is subject to recall at any time.

DECIMALS	X ± .05	TOLS.	FRACTIONS	1/64
	.XX ± .01		ANGLES	0° - 30'
	.XXX ± .005			
MATERIAL	.064 THK AL ALY 5052-H32			
FINISH	SA04			
VEL	IRIDITE			

FINAL APPROVAL	<i>[Signature]</i>	DATE	2/13/75
MECH. DES	F. HANNON	DATE	12-1-74
ELECT. DES.		DATE	
CHECKED	E. JANNUZZI	DATE	12-14-74
DRAWN	G. D.L.	DATE	12-2-74

REQ'D ITEM	PART NUMBER	DESCRIPTION	SYM.
LIST OF MATERIAL			
THE TECHNICAL MATERIEL CORP. MAMARONECK, NEW YORK			
BOTTOM COVER			
OUTPUT COUPLER			

SIZE	CODE IDENT. NO.	DWG NO.	ISSUE
B	82679	MS6572	Ø
SCALE	1:1	SHEET	OF