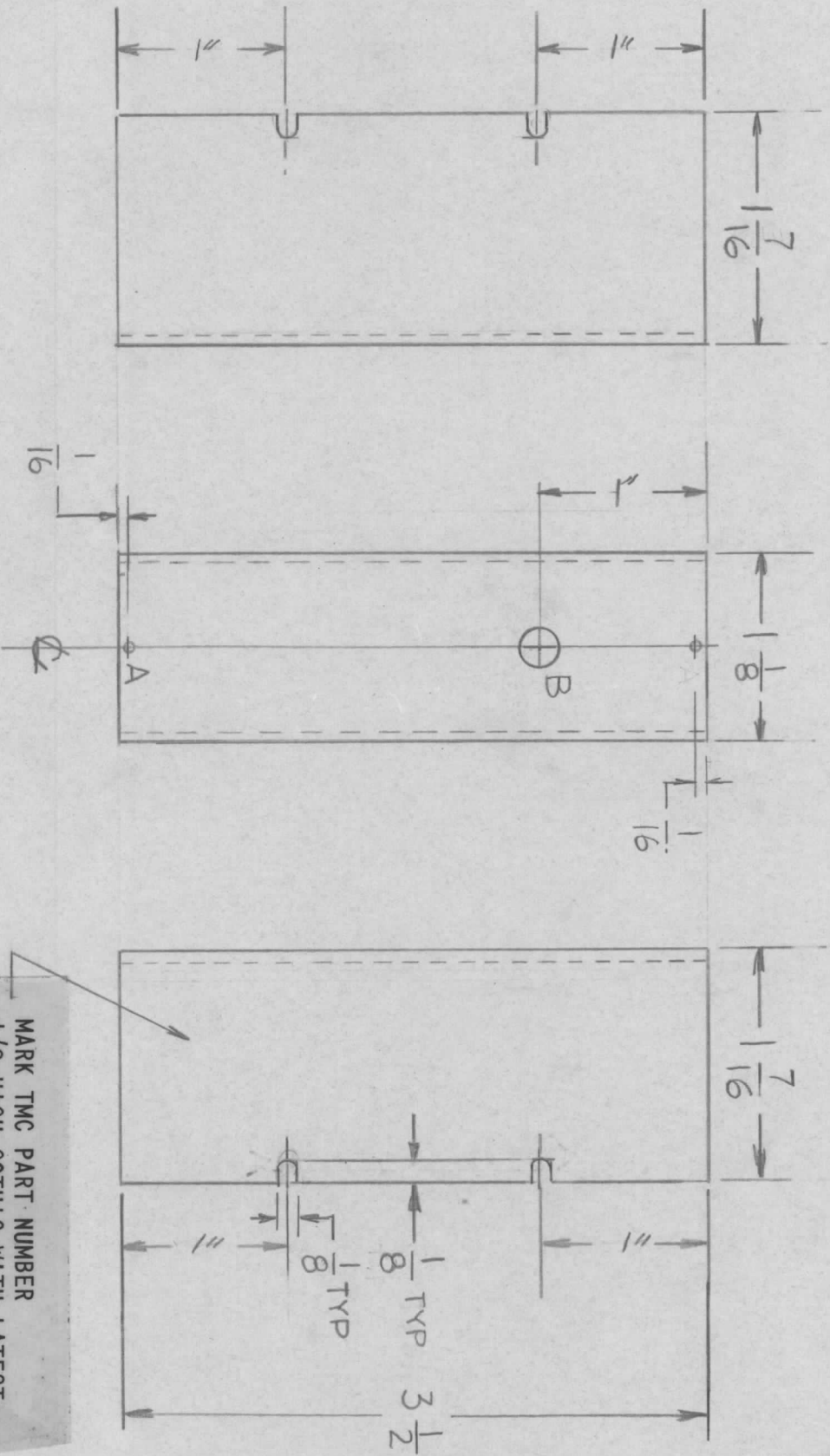


REVISIONS				DATE	APPROVED
EM.N. NO.	DRAFT	CHKD	ZONE	LTR	DESCRIPTION
				X	EXP. RELEASE
				X1	1 7/16 WAS 1 3/8
				Ø	ORIGINAL RELEASE FOR PRODUCTION
					3-13-75



HOLE
 A = 7/64 2REQ
 B = 1/4 DIA 1REQ

MARK TMC PART NUMBER
 1/8 HIGH GOTHIC WITH LATEST
 REVISION LETTER

- UNLESS OTHERWISE SPECIFIED:
1. USE MATERIAL THICKNESS FOR MAXIMUM RADIUS ON ALL BENDS.
 2. ALL ANGULAR BENDS 90 DEGREES.
 3. REMOVE ALL BURRS AND SHARP EDGES.

QTY / UNIT	1	MODEL USED ON	A5611	ASS'Y NO.	
APPLICATION					
CODE					

DECIMALS	X ± .05	TOLS.	FRACTIONS	1/64
	.XX ± .01		ANGLES	0° .30'
	.XXX ± .005			

UNLESS OTHERWISE SPECIFIED DIMENSIONS ARE IN INCHES AND INCLUDE CHEMICALLY APPLIED OR PLATED FINISHES	FINAL APPROVAL	DATE
	<i>[Signature]</i>	6/17/74
MECH. DES.	E. IANNUZZI	DATE
ELECT. DES.		DATE
CHECKED	F. IANNUZZI	DATE
DATE	12-11-74	
DRAWN	F. IANNUZZI	DATE
DATE	6/19/74	

LIST OF MATERIAL	DESCRIPTION	SYM.
	THE TECHNICAL MATERIEL CORP.	
	MAMARONECK, NEW YORK	
	COVER (TOP)	
	OUTPUT COUPLER	

NOTICE TO PERSONS RECEIVING THIS DRAWING
 THE TECHNICAL MATERIEL CORPORATION claims proprietary right in the material disclosed hereon. This drawing is issued in confidence for engineering information only and may not be reproduced or used to manufacture anything shown hereon without permission from THE TECHNICAL MATERIEL CORPORATION to the user. This drawing is loaned for mutual assistance and is subject to recall at any time.

FINISH S404
 YEL IRIDITE

SCALE 1:1

SIZE CODE IDENT. NO. DWG NO. ISSUE
 B 82679 MS 6571 Ø