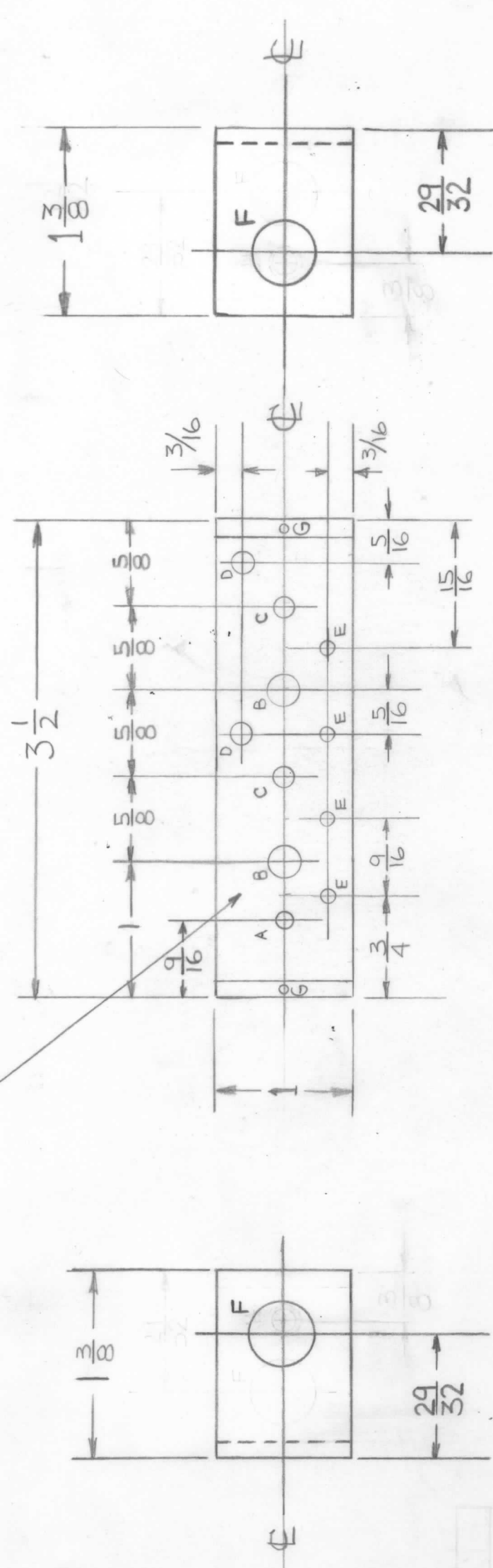


MARK TMC PART NUMBER
1/8 HIGH-GOTHIC WITH LATEST
REVISION LETTER

E.M.N. NO.	DRAFT	CHKD	ZONE	LTR	DESCRIPTION	DATE	APPROVED
				X	EXP. RELEASE	10-2-74	
				X1	MATERIAL WAS 5052-32 ALUM	2-13-75	
				X2	SIDE VIEWS CLARIFIED	2-28-75	
				Ø	ORIGINAL RELEASE FOR PRODUCTION	3/13/75	



UNLESS OTHERWISE SPECIFIED:

1. USE MATERIAL THICKNESS FOR MAXIMUM RADIUS ON ALL BENDS.
2. ALL ANGULAR BENDS 90 DEGREES.
3. REMOVE ALL BURRS AND SHARP EDGES.
4. MOUNT INSERTS AFTER FINISHING.

HOLES

A -	11/64	1REQ
B -	1/4	2REQ
C -	13/64	2REQ
D -	3/16	2REQ
E -	1/8	4REQ
F -	1/2	2REQ
G -	2/56 TAP	1/4 DEEP 6REQ

REQ'D ITEM	PART NUMBER	DESCRIPTION	SYM.

LIST OF MATERIAL	
FINAL APPROVAL	DATE 3/13/75
MECH. DES.	F. JANNUZZI 2-775
ELECT. DES.	DATE
CHECKED	F. JANNUZZI 12-14-74
DRAWN	F. JANNUZZI 6/19/74

UNLESS OTHERWISE SPECIFIED DIMENSIONS ARE IN INCHES AND INCLUDE CHEMICALLY APPLIED OR PLATED FINISHES	FRACTIONS 1/64
DECIMALS .X ± .05	TOLS. ANGLES 0° .30'
.XX ± .01	
.XXX ± .005	
MATERIAL 1/8 ALUM	EXTRUS. 6063-T5
FINISH S404	YEL IRIDITE

QTY / UNIT	1	MODEL USED ON	A5611	ASSY NO.	
APPLICATION		CODE			
<p>NOTICE TO PERSONS RECEIVING THIS DRAWING</p> <p>THE TECHNICAL MATERIEL CORPORATION claims proprietary right in the material disclosed hereon. This drawing is issued in confidence for engineering information only and may not be reproduced or used to manufacture anything shown hereon without permission from THE TECHNICAL MATERIEL CORPORATION to the user. This drawing is loaned for mutual assistance and is subject to recall at any time.</p>					

THE TECHNICAL MATERIEL CORP.	MAMARONECK, NEW YORK
OUTPUT COUPLER MTG.	PLATE
SIZE B	CODE IDENT. NO. 82679
ISSUE Ø	DWG NO. MS 6570
SCALE 1:1	SHEET 1 OF 1