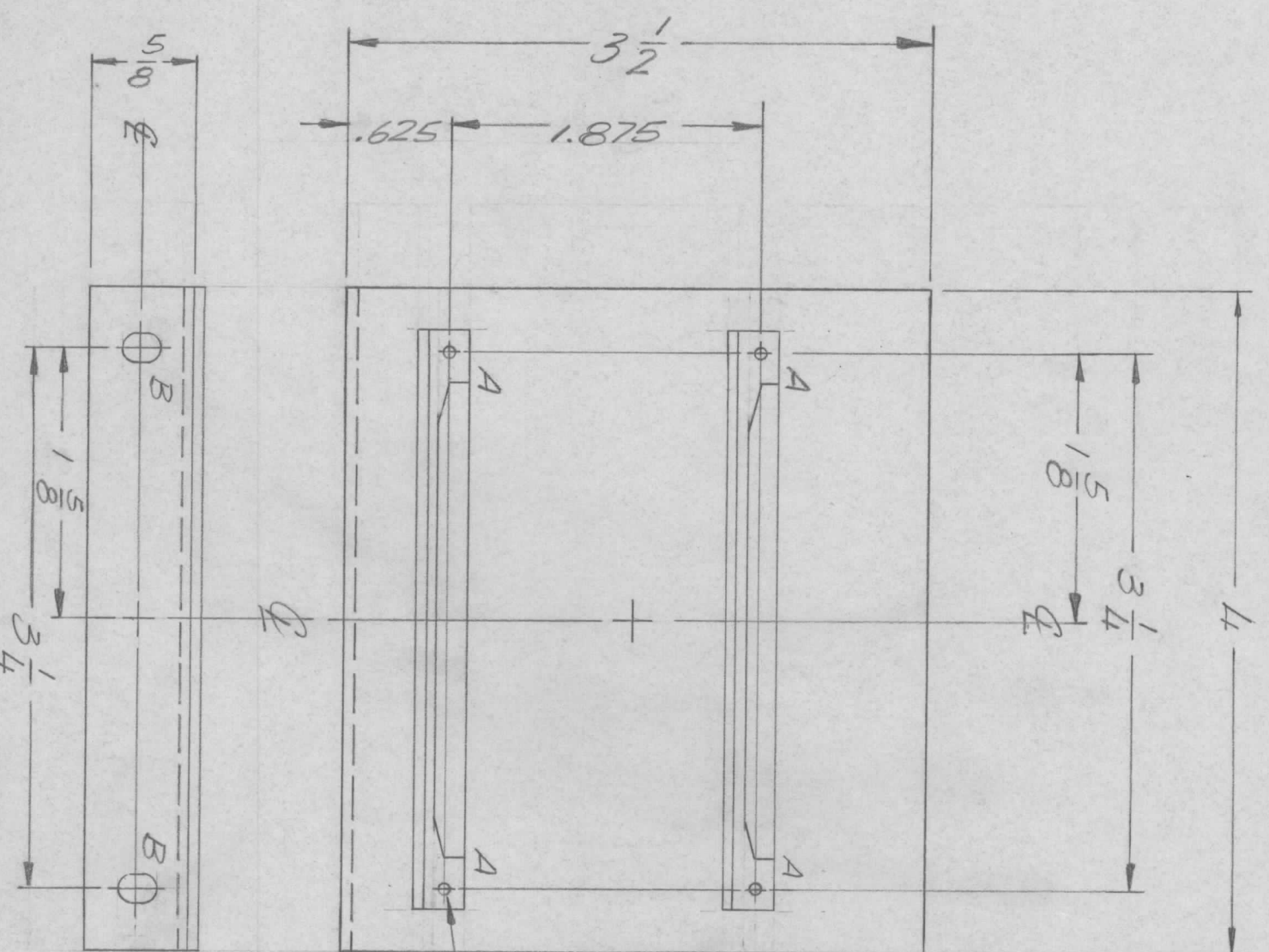


REVISIONS				DATE	APPROVED
EM.N. NO.	DRAFT	CHKD	ZONE	LTR	DESCRIPTION
	2.			Ø	ORIGINAL RELEASE FOR PRODUCTION
					6/16/75



① MOUNT AS SHOWN

HOLE DESCRIPTION REQ.  
 A .067 ± .003 DIA - 4  
 B — 1/164 x 1/4 SLOT — 2

REQ'D	ITEM	PART NUMBER	DESCRIPTION	SYM.
4	2	EY 100-5	EYELET	A
2	1	CU157-4	RETAINER P.C. BOARD	

LIST OF MATERIAL

THE TECHNICAL MATERIEL CORP.  
 MAMARONECK, NEW YORK

BRKT., GUIDE

- UNLESS OTHERWISE SPECIFIED:
1. USE MATERIAL THICKNESS FOR MAXIMUM RADIUS ON ALL BENDS.
  2. ALL ANGULAR BENDS 90 DEGREES.
  3. REMOVE ALL BURRS AND SHARP EDGES.
  4. MOUNT INSERTS AFTER FINISHING.

QTY / UNIT	2	MODEL USED ON	THRA-2	ASS'Y NO.	
APPLICATION					
CODE					

NOTICE TO PERSONS RECEIVING THIS DRAWING  
 THE TECHNICAL MATERIEL CORPORATION claims proprietary right in the material disclosed herein. This drawing is issued in confidence for engineering information only and may not be reproduced or used to manufacture anything shown hereon without permission from THE TECHNICAL MATERIEL CORPORATION to the user. This drawing is loaned for mutual assistance and is subject to recall at any time.

UNLESS OTHERWISE SPECIFIED DIMENSIONS ARE IN INCHES AND INCLUDE CHEMICALLY APPLIED OR PLATED FINISHES	DECIMALS	FRACTIONS
.X ± .05	1/64	
.XX ± .01	TOLS.	ANGLES
.XXX ± .005		0° - 30°
MATERIAL	5052 H32	064 ALUM
FINISH	S404	YELLOW IRIDITE

FINAL APPROVAL	DATE
<i>[Signature]</i>	8/27/75
MECH. DES.	DATE
ELECT. DES.	DATE
CHECKED	DATE
DRAWN	DATE
	9E
	2/8/74

SIZE	CODE IDENT. NO.	DWG NO.	ISSUE
B	82679	MS 6518	Ø
SCALE	1:1	SHEET	OF