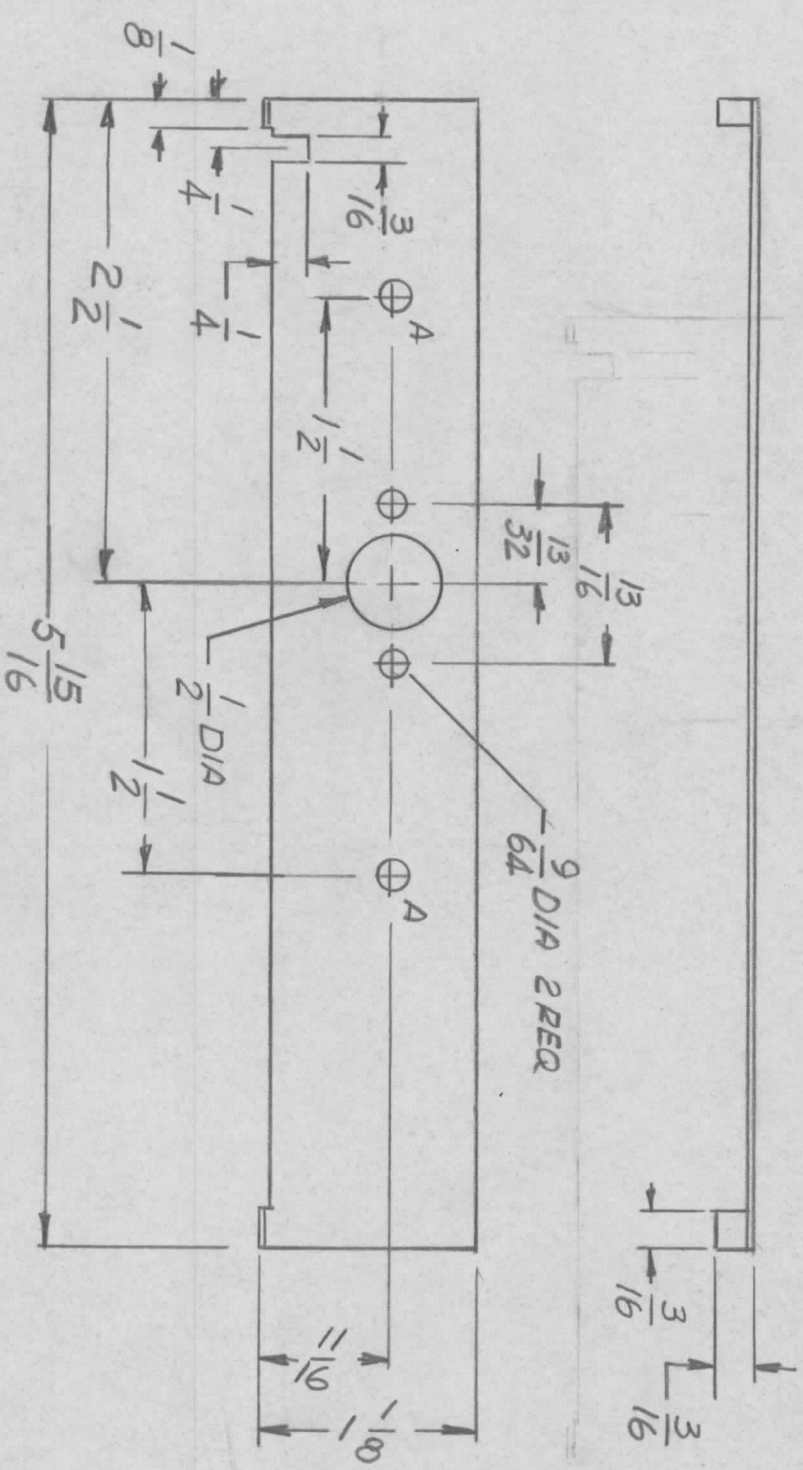


REVISIONS				DATE	APPROVED
EM.N. NO.	DRAFT	CHKD	ZONE	LTR	DESCRIPTION
	GDL		B		REDRAWN MS 6511-1, -2 & -3 DELETED
	GDL		B		ORIGINAL RELEASE FOR PRODUCTION
					1-25-77



HOLE  
A - 5/32 DIA

QTY / UNIT	MODEL USED ON	ASSY NO.
	GPR-110	A4977
APPLICATION		
CODE		

NOTICE TO PERSONS RECEIVING THIS DRAWING  
THE TECHNICAL MATERIEL CORPORATION claims proprietary right in the material disclosed hereon. This drawing is issued in confidence for engineering information only and may not be reproduced or used to manufacture anything shown hereon without permission from THE TECHNICAL MATERIEL CORPORATION to the user. This drawing is loaned for mutual assistance and is subject to recall at any time.

UNLESS OTHERWISE SPECIFIED DIMENSIONS ARE IN INCHES AND INCLUDE CHEMICALLY APPLIED OR PLATED FINISHES	
DECIMALS	FRACTIONS
X ± .05	1/64
.XX ± .01	TOLS. ANGLES
.XXX ± .005	90° 30'
MATERIAL .032 THK	
FINISH	
NATURAL	

FINAL APPROVAL	MECH. DES.	DATE
<i>GDL</i>		1/10/77
ELECT. DES.	DATE	
CHECKED	DATE	
DRAWN	DATE	1/10/76

REQ'D ITEM	PART NUMBER	DESCRIPTION	SYM.
LIST OF MATERIAL			
THE TECHNICAL MATERIEL CORP.			
MAMARONECK, NEW YORK			
SHIELD, RF			
SIZE	CODE IDENT. NO.	DWG NO.	ISSUE
B	82679	MS 6511	B
SCALE	1:1	SHEET	OF