

APPLICATION

QTY 1
MODEL USED ON KIT 375

ASS'Y NO.

LTR Ø

DESCRIPTION

ORIG RELEASE FOR PROD 9/29/73

REVISIONS

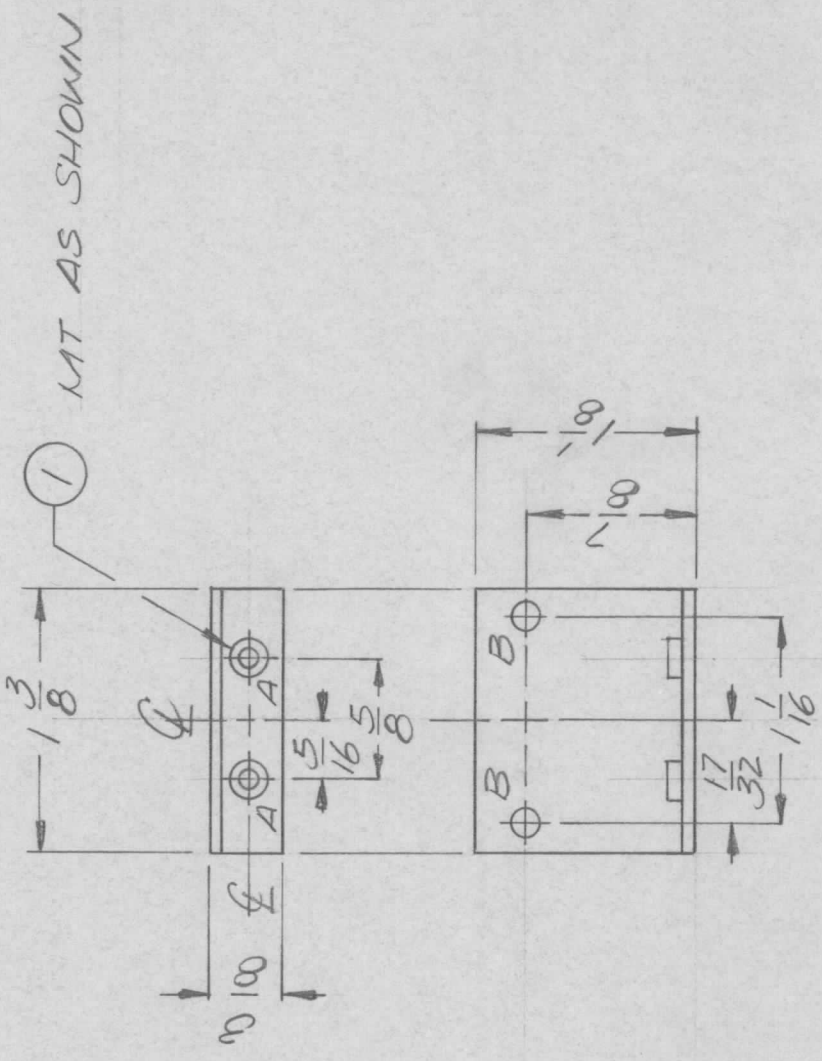
DATE 9/29/73

E.M.N.NO

DRAFT Q.

CHKD

APPD



HOLE A - .161 - .164 DIA - 2 REQ.
HOLE B - 9/64 DIA. - 2 REQ.

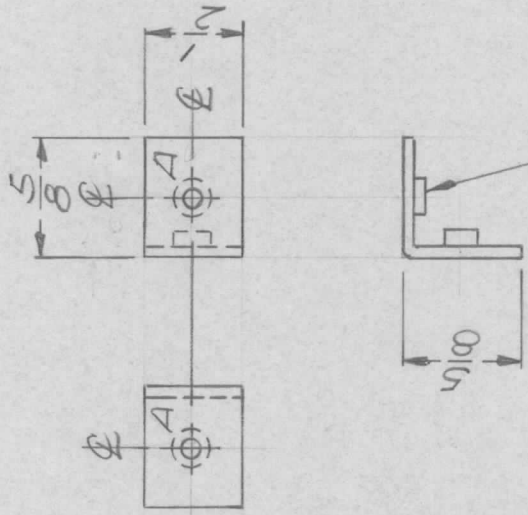
2	1	KIT290440	NUT, PLAIN ROUND		
REQ'D ITEM	PART NUMBER	DESCRIPTION	SYM.		
F.B.					
FINAL APPROVAL	DATE 19 MAR 73	LIST OF MATERIAL			
MECH. DES.	DATE 19 MAR 73	THE TECHNICAL MATERIEL CORP.			
ELECT. DES.	DATE	MAMARONECK, NEW YORK			
CHECKED	DATE	RELAY MTG. BRACKET			
DRAWN GE	DATE 9/16/73				
UNLESS OTHERWISE SPECIFIED DIMENSIONS ARE IN INCHES AND INCLUDE CHEMICALLY APPLIED OR PLATED FINISHES		SIZE A			
DECIMALS .X ± .05 .XX ± .01 .XXX ± .005		CODE IDENT. NO. 82679			
FRACTIONS 1/64 ANGLES 0° - 30'		DWG NO. MS6459			
MATERIAL .051 ALUM 5052 H32		SCALE 1/01			
FINISH S404 YEL IRIDITE		SHEET OF			
NOTICE TO PERSONS RECEIVING THIS DRAWING		ISSUE Ø			

THE TECHNICAL MATERIEL CORPORATION claims proprietary right in the material disclosed hereon. This drawing is issued in confidence for engineering information only and may not be reproduced or used to manufacture anything shown hereon without permission from THE TECHNICAL MATERIEL CORPORATION to the user. This drawing is loaned for mutual assistance and is subject to recall at any time.

APPLICATION

REVISIONS

QTY	MODEL USED ON	ASS'Y NO.	LTR	DESCRIPTION	DATE	E.M.N.NO	DRAFT	CHKD	APPD
4	TM125		Ø	ORIG RELEASE FOR PROD	3/23/73		CL		



① MT. AS SHOWN

A HOLE -.191-.194 DIA. - 2 REQ.

UNLESS OTHERWISE SPECIFIED DIMENSIONS ARE IN INCHES AND INCLUDE CHEMICALLY APPLIED OR PLATED FINISHES		LIST OF MATERIAL	
DECIMALS	FRACTIONS	REQ'D ITEM	PART NUMBER
.X ± .05	TOLS. 1/64	2 1	NT1290632-Ø
.XX ± .01	ANGLES 0° - 30'	DESCRIPTION	NUT, ROUND
.XXX ± .005			
MATERIAL .064 ALUM.		THE TECHNICAL MATERIEL CORP. MAMARONECK, NEW YORK	
FINISH S404 YEL. IRIDITE		MTG. BRACKET	
FINAL APPROVAL	DATE	SIZE	CODE IDENT. NO.
MECH. DES.	DATE	A	82679
ELECT. DES.	DATE	SCALE	DWG NO.
CHECKED	DATE	1:1	MS 6462
DRAWN	DATE	SHEET	ISSUE
GE	7.7.73		Ø

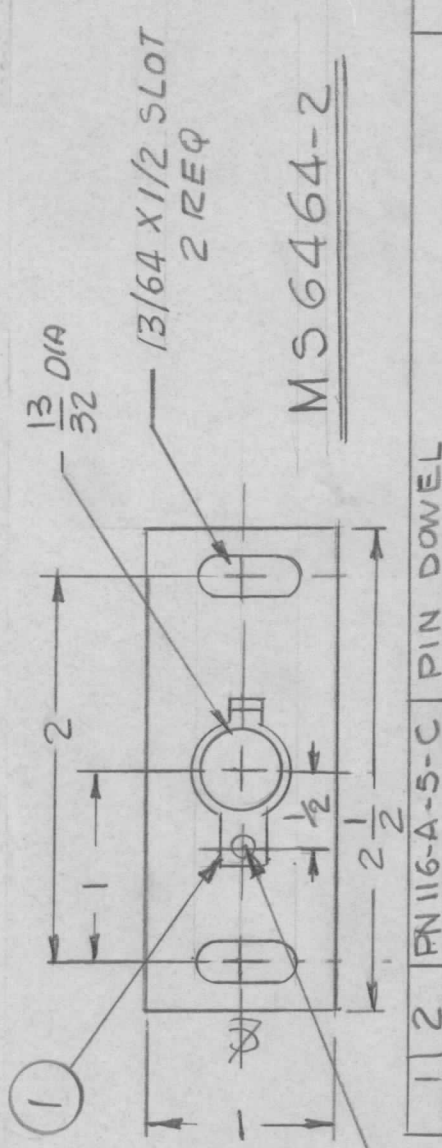
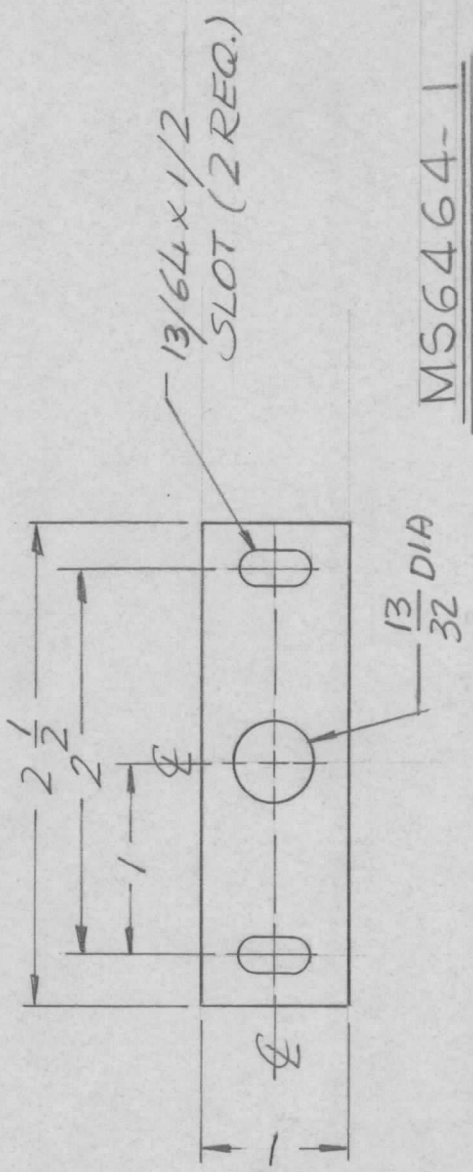
NOTICE TO PERSONS RECEIVING THIS DRAWING
 THE TECHNICAL MATERIEL CORPORATION claims proprietary right in the material disclosed hereon. This drawing is issued in confidence for engineering information only and may not be reproduced or used to manufacture anything shown hereon without permission from THE TECHNICAL MATERIEL CORPORATION to the user. This drawing is loaned for mutual assistance and is subject to recall at any time.

APPLICATION

QTY	MODEL USED ON	ASS'Y NO.	LTR
1	AX5176	AX5179	Ø
1	AX5176	AX5178	A

REVISIONS

DESCRIPTION	DATE	E.M.N.NO	DRAFT	CHKD	APPD
ORIGINAL RELEASE	11/30/73		D.V.		
MS 6464-2 ADD	4-28-77	21541	G.D.L	W.J.B	*



1	2	FN 116-A-5-C	PIN DOWEL
1	1	PM 516-A-5-C	WASHER LOCK

REQ'D ITEM	PART NUMBER	DESCRIPTION	SYM.
------------	-------------	-------------	------

LIST OF MATERIAL

FINAL APPROVAL: *CEB* DATE: 11/6/73
 MECH. DES. DATE:
 ELECT. DES. DATE:
 CHECKED:
 DRAWN: *CE*

MATERIAL 5052H32
 1/8 ALUM
 FINISH 5404
 YEL. IRIDITE

BRACKET, SHAFT SUPPORT

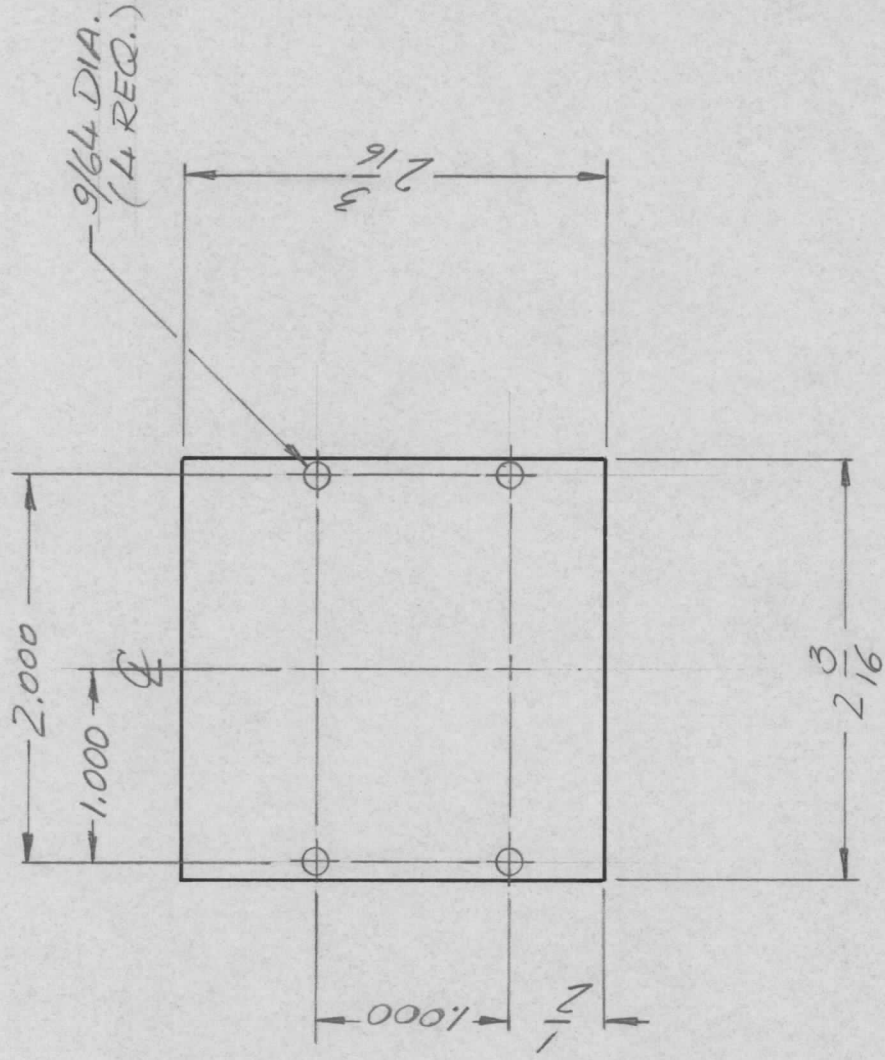
SIZE	CODE IDENT. NO.	DWG NO.	ISSUE
A	82679	MS6464	A
SCALE 1:1	SHEET	OF	

NOTICE TO PERSONS RECEIVING THIS DRAWING
 THE TECHNICAL MATERIEL CORPORATION claims proprietary right in the material disclosed hereon. This drawing is issued in confidence for engineering information only and may not be reproduced or used to manufacture anything shown hereon without permission from THE TECHNICAL MATERIEL CORPORATION to the user. This drawing is loaned for mutual assistance and is subject to recall at any time.

APPLICATION

REVISIONS

QTY	MODEL USED ON	ASS'Y NO.	LTR	DESCRIPTION	DATE	E.M.N.NO	DRAFT	CHKD	APPD
1	AX5176	AX5179	Ø	ORIGINAL RELEASE	11/30/73		DV		



UNLESS OTHERWISE SPECIFIED DIMENSIONS ARE IN INCHES AND INCLUDE CHEMICALLY APPLIED OR PLATED FINISHES	REQ'D ITEM	PART NUMBER	DESCRIPTION	SYM.
	F.B.		LIST OF MATERIAL	
DECIMALS	FINAL APPROVAL	DATE	THE TECHNICAL MATERIEL CORP. MAMARONECK, NEW YORK REAR PLATE	
.X ± .05	DB	11/1/73		
.XX ± .01	MECH. DES.	DATE		
.XXX ± .005	ELECT. DES.	DATE		
	CHECKED	DATE		
MATERIAL 5052H32	DRAWN	DATE	SIZE	CODE IDENT. NO.
1/8 ALUM	GE	3-573	A	82679
FINISH 5404 YEL IRIDITE			SCALE	DWG NO.
			1:1	M56466
			SHEET	OF
				ISSUE
				Ø

NOTICE TO PERSONS RECEIVING THIS DRAWING
 THE TECHNICAL MATERIEL CORPORATION claims proprietary right in the material disclosed hereon. This drawing is issued in confidence for engineering information only and may not be reproduced or used to manufacture anything shown hereon without permission from THE TECHNICAL MATERIEL CORPORATION to the user. This drawing is loaned for mutual assistance and is subject to recall at any time.

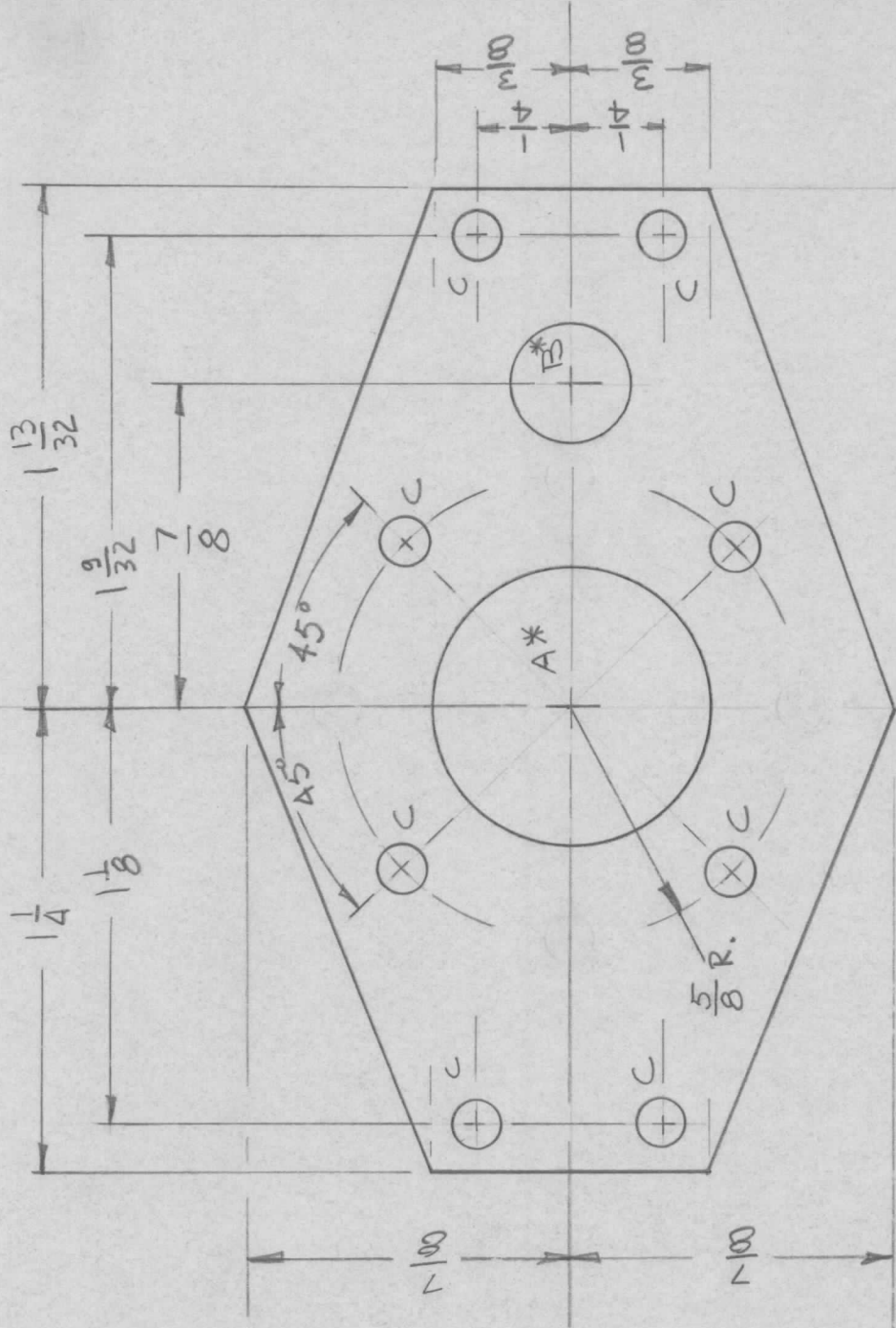
APPLICATION

QTY 1
 MODEL USED ON AX5176
 ASS'Y NO. AX5178

LTR \emptyset

REVISIONS

DESCRIPTION ORIGINAL RELEASE
 DATE 11/30/73
 E.M.N.NO.
 DRAFT DV
 CHKD
 APPD



A ~ 13/16 DIA 1 REQ'D
 B ~ 11/32 DIA 1 REQ'D
 C ~ 1/8 DIA 8 REQ'D

ROUND ALL CORNERS & EDGES.

* CHAMFER EDGES OF "A" & "B" HOLES.

UNLESS OTHERWISE SPECIFIED DIMENSIONS ARE IN INCHES AND INCLUDE CHEMICALLY APPLIED OR PLATED FINISHES

DECIMALS .X ± .05
 .XX ± .01
 .XXX ± .005

FRACTIONS 1/64

TOLS. ANGLS 0°-30°

MATERIAL .125 AWH
 5052-H32

FINISH 5404 YEL IRID

REQ'D	ITEM	PART NUMBER	DESCRIPTION	SYM.
LIST OF MATERIAL				
THE TECHNICAL MATERIEL CORP. MAMARONECK, NEW YORK				
ROTOR, COIL ASS'Y				

FINAL APPROVAL	DATE
SOB	11/16/73
MECH. DES.	DATE
ELECT. DES.	DATE
CHECKED	DATE
DRAWN	DATE 11/16/73

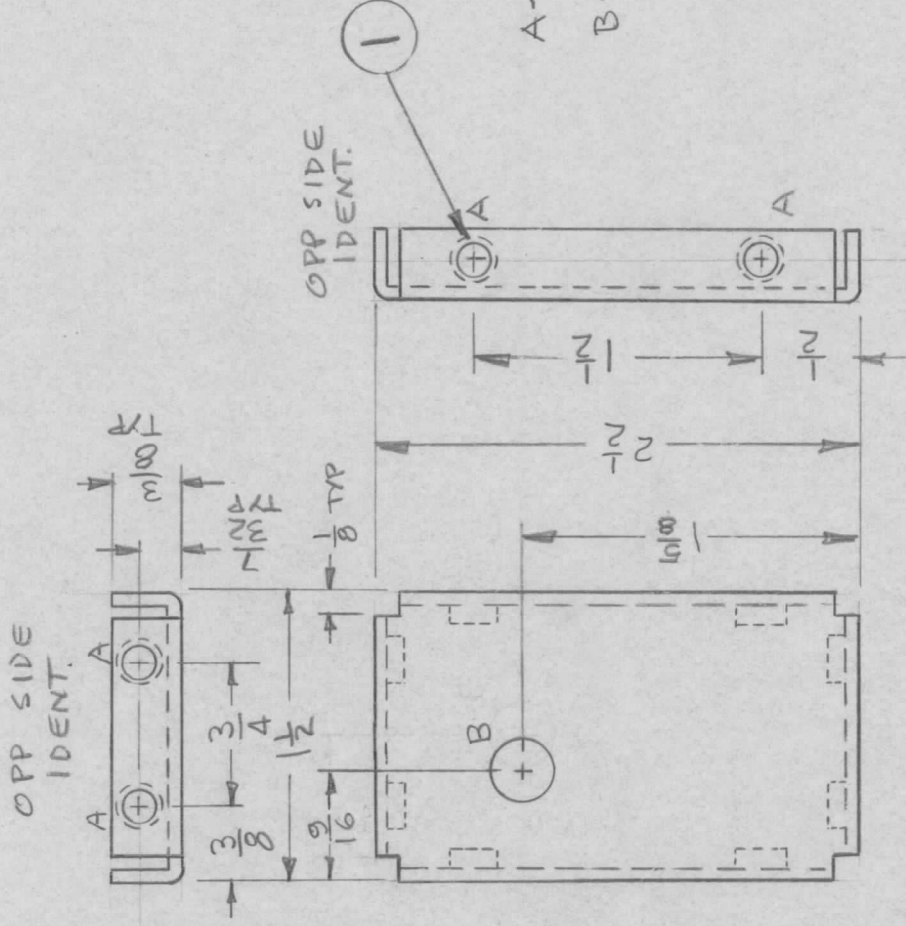
NOTICE TO PERSONS RECEIVING THIS DRAWING
 THE TECHNICAL MATERIEL CORPORATION claims proprietary right in the material disclosed herein. This drawing is issued in confidence for engineering information only and may not be reproduced or used to manufacture anything shown hereon without permission from THE TECHNICAL MATERIEL CORPORATION to the user. This drawing is loaned for mutual assistance and is subject to recall at any time.

SIZE A	CODE IDENT. NO. 82679	DWG NO. MS6469	ISSUE \emptyset
SCALE	SHEET	OF	

REVISIONS

APPLICATION

QTY	MODEL USED ON	ASS'Y NO.	LTR	DESCRIPTION	DATE	E.M.N.NO	DRAFT	CHKD	APPD
1	ATSA-3	AX5180	Ø	ORIGINAL RELEASE	11/30/73		DV		



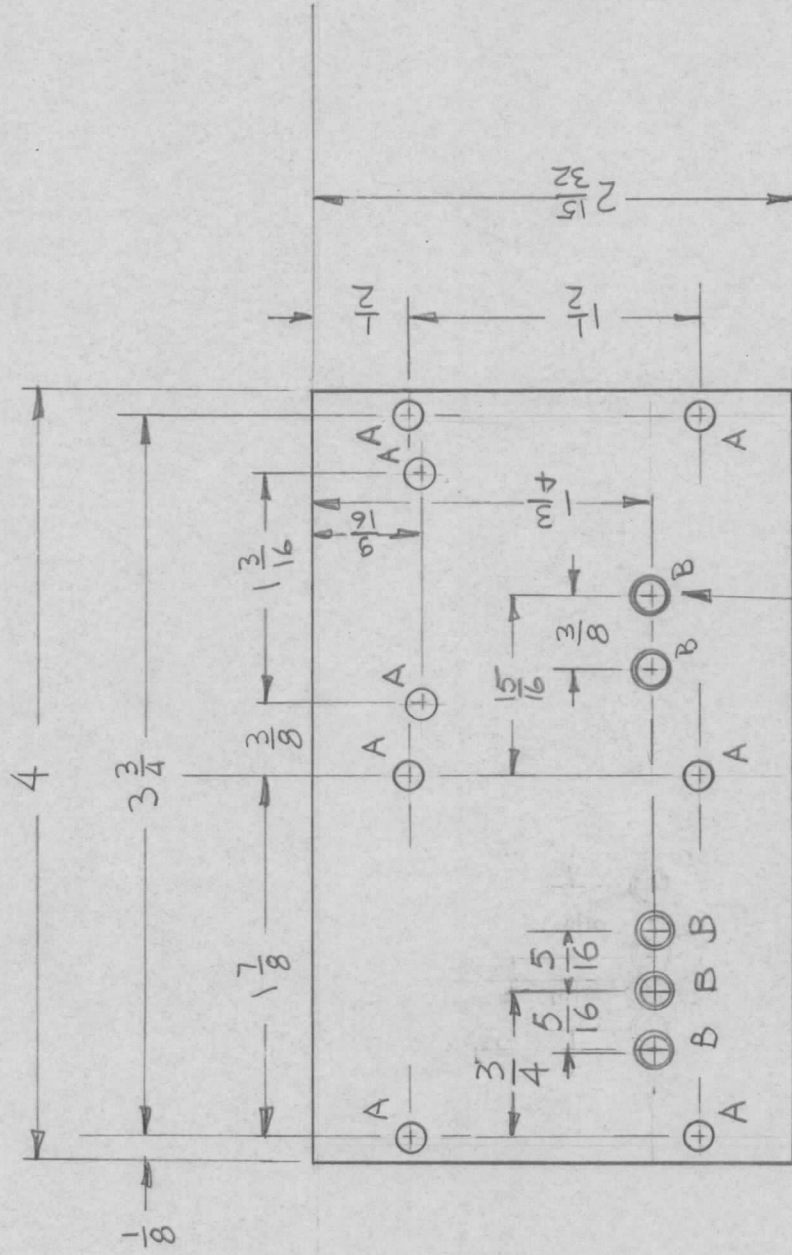
A ~ .161 - .164 DIA 8 RECD.
 B ~ $\frac{5}{16}$ DIA. 1 RECD

8	1	NT29-0440-4	NUT, SWAGETYPE	A
LIST OF MATERIAL				
THE TECHNICAL MATERIEL CORP. MAMARONECK, NEW YORK				
PLATE, CENTER				
UNLESS OTHERWISE SPECIFIED DIMENSIONS ARE IN INCHES AND INCLUDE CHEMICALLY APPLIED OR PLATED FINISHES				
DECIMALS FRACTIONS				
.X ± .05 TOLS. 1/64				
.XX ± .01 ANGLES 0° - 30°				
.XXX ± .005				
MATERIAL .064				
ALUH 5052-H32				
FINISH 5404 YEL IRID				
FINAL APPROVAL DATE 1/9/73				
MECH. DES. DATE				
ELECT. DES. DATE				
CHECKED DATE				
DRAWN DATE 14JUN73				
NOTICE TO PERSONS RECEIVING THIS DRAWING				
THE TECHNICAL MATERIEL CORPORATION claims proprietary right in the material disclosed hereon. This drawing is issued in confidence for engineering information only and may not be reproduced or used to manufacture anything shown hereon without permission from THE TECHNICAL MATERIEL CORPORATION to the user. This drawing is loaned for mutual assistance and is subject to recall at any time.				
SIZE	CODE IDENT. NO.	DWG NO.	ISSUE	
A	82679	MS6473	Ø	
SCALE		SHEET	OF	

REVISIONS

APPLICATION

QTY	MODEL USED ON	ASS'Y NO.	LTR	DESCRIPTION	DATE	E.M.N.NO	DRAFT	CHKD	APPD
1	AX5176	AX5180	Ø	ORIGINAL RELEASE	11/30/73		DV		
			A	DIM 3/4 WAS 15/16 & 5/16 WAS 3/8	1-3-75	21194	GOL	A	A



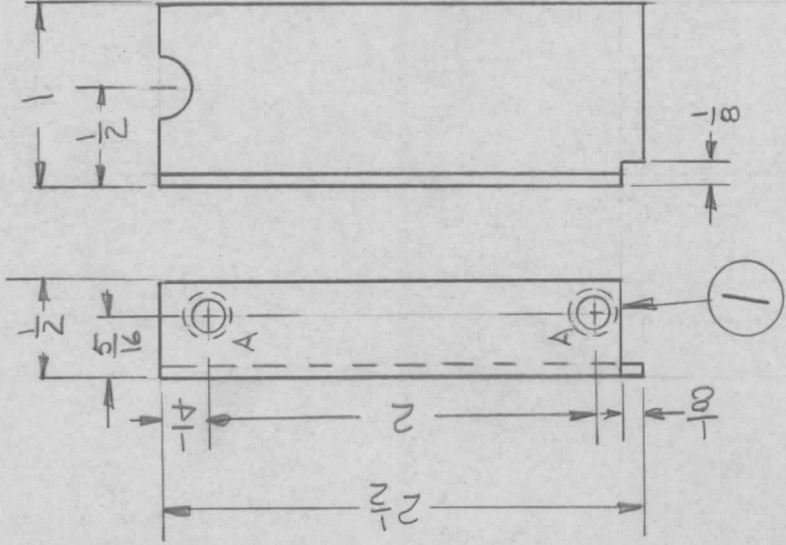
CHAMFER THIS SIDE ONLY ON ALL "B" HOLES.

A ~ 3/4 DIA 8 REQ'D
 B ~ .159 DIA 5 REQ'D.

REQ'D	ITEM	PART NUMBER	DESCRIPTION	SYM.
LIST OF MATERIAL				
THE TECHNICAL MATERIEL CORP. MAMARONECK, NEW YORK				
PLATE, FEEDTHRU				
UNLESS OTHERWISE SPECIFIED DIMENSIONS ARE IN INCHES AND INCLUDE CHEMICALLY APPLIED OR PLATED FINISHES				
DECIMALS	FRACTIONS			
.X ± .05	TOLS. 1/64			
.XX ± .01	ANGLES 0°-30'			
.XXX ± .005				
MATERIAL .061				
ALUM 5052 H32				
FINISH 5404 VEL IRID				
FINAL APPROVAL	DATE 11/6/73			
MECH. DES.	DATE			
ELECT. DES.	DATE			
CHECKED	DATE			
DRAWN	DATE 2000073			
SIZE A	CODE IDENT. NO. 82679	DWG NO. MSG474	ISSUE A	
SCALE		SHEET	OF	

NOTICE TO PERSONS RECEIVING THIS DRAWING
 THE TECHNICAL MATERIEL CORPORATION claims proprietary right in the material disclosed hereon. This drawing is issued in confidence for engineering information only and may not be reproduced or used to manufacture anything shown hereon without permission from THE TECHNICAL MATERIEL CORPORATION to the user. This drawing is loaned for mutual assistance and is subject to recall at any time.

APPLICATION			REVISIONS						
QTY	MODEL USED ON	ASS'Y NO.	LTR	DESCRIPTION	DATE	E.M.N.NO	DRAFT	CHKD	APPD
1	AX 5176	AX 5180	Ø	ORIGINAL RELEASE	11/30/73		DV		



A ~ .164 - .164 DIA 2 REQ'D

UNLESS OTHERWISE SPECIFIED DIMENSIONS ARE IN INCHES AND INCLUDE CHEMICALLY APPLIED OR PLATED FINISHES	REQ'D ITEM	PART NUMBER	DESCRIPTION	SYM.
DECIMALS .X ± .05 .XX ± .01 .XXX ± .005	2	1	NT129-Ø44Ø-4 NUT, SWAGE	A
FRACTIONS 1/64 1/32 3/64				
TOLS. 1/64				
ANGLES 0° - 30°				
LIST OF MATERIAL				
THE TECHNICAL MATERIEL CORP. MAMARONECK, NEW YORK				
MATERIAL .064	FINAL APPROVAL	DATE		
ALUM 5052-H32	MECH. DES.	DATE		
FINISH	ELECT. DES.	DATE		
5409 YEL IRID	CHECKED	DATE		
	DRAWN	DATE		
SHIELD, SENSE BD				
SIZE	CODE IDENT. NO.	DWG NO.	ISSUE	
A	82679	MS 6477	Ø	
SCALE		SHEET	OF	

NOTICE TO PERSONS RECEIVING THIS DRAWING
THE TECHNICAL MATERIEL CORPORATION claims proprietary right in the material disclosed hereon. This drawing is issued in confidence for engineering information only and may not be reproduced or used to manufacture anything shown hereon without permission from THE TECHNICAL MATERIEL CORPORATION to the user. This drawing is loaned for mutual assistance and is subject to recall at any time.