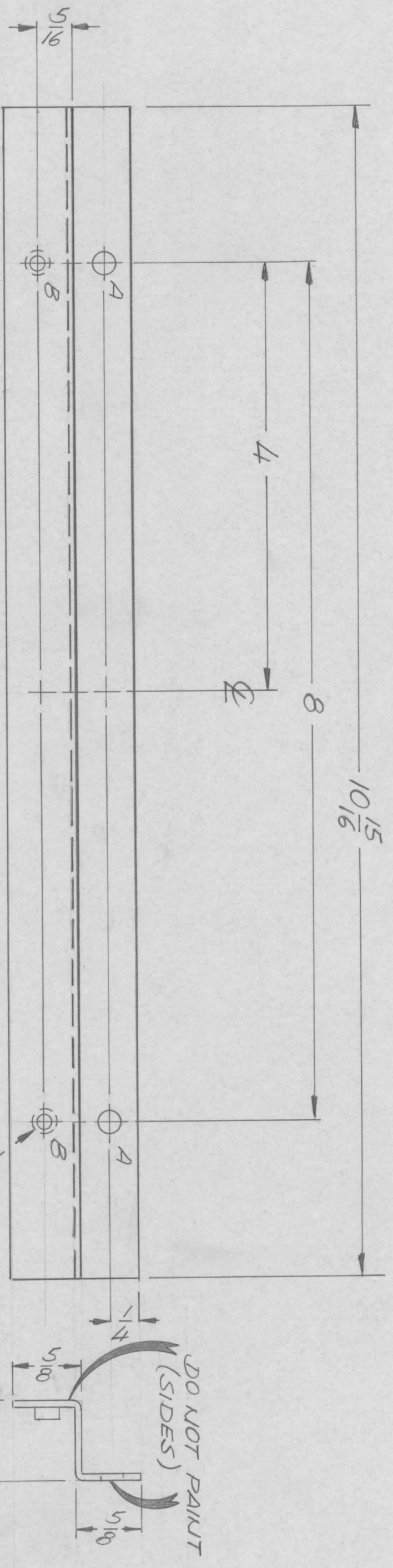


| REVISIONS | | | | DATE | APPROVED |
|-----------|-------|------|------|------|---------------------------------|
| EM.N. NO. | DRAFT | CHKD | ZONE | LTR | DESCRIPTION |
| | CP | | | Ø | ORIGINAL RELEASE FOR PRODUCTION |
| | | | | | 10-20-72 |



HOLE DESCRIPTION REQ.

- A — 13/64 DIA — 2
- B — .191 .194 — 2

| | | |
|------------|---------------|-----------|
| QTY / UNIT | MODEL USED ON | ASS'Y NO. |
| | APPLICATION | AX5174 |
| | CODE | |

| | |
|-------------|--------------|
| DECIMALS | FRACTIONS |
| .X ± .05 | 1/64 |
| .XX ± .01 | TOLS. ANGLES |
| .XXX ± .005 | 0° - 30' |

| | |
|-------------------------------|------|
| FINAL APPROVAL | DATE |
| Mech. Des. <i>[Signature]</i> | DATE |
| ELECT. DES. | DATE |
| CHECKED | DATE |
| DRAWN | DATE |

| | |
|----------|-------------------|
| MATERIAL | 5052 H32 |
| FINISH | S 520 |
| FINISH | BLUE GRAY TEX W/L |

| REQ'D ITEM | PART NUMBER | DESCRIPTION | SYM. |
|------------|-------------|-------------------------|------|
| 2 | 1 | NT129-0632-4 NUT, ROUND | B |

LIST OF MATERIAL

THE TECHNICAL MATERIEL CORP.
MAMARONECK, NEW YORK

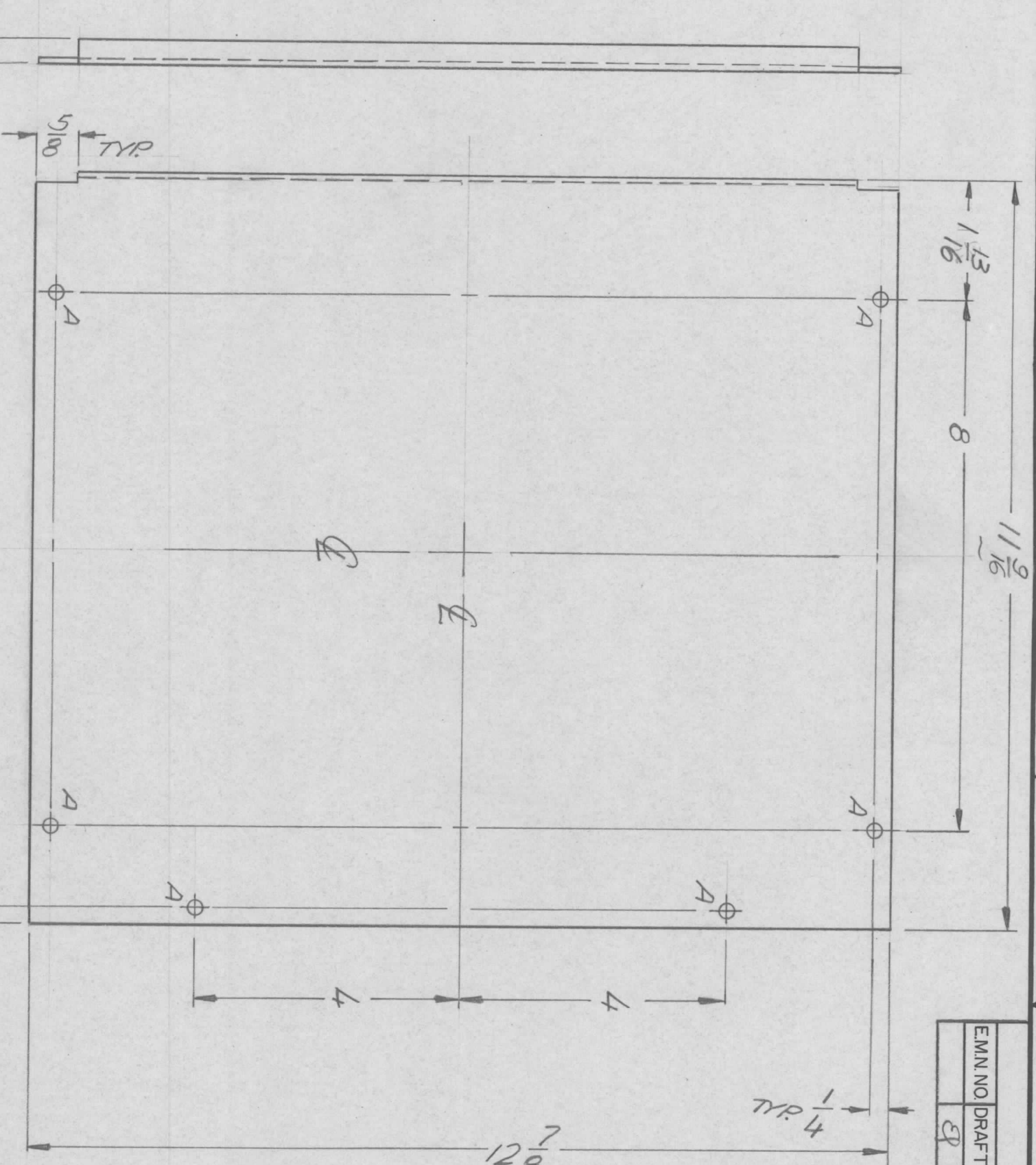
SUPPORT, BRACKET

NOTICE TO PERSONS RECEIVING THIS DRAWING

THE TECHNICAL MATERIEL CORPORATION claims proprietary right in the material disclosed hereon. This drawing is issued in confidence for engineering information only and may not be reproduced or used to manufacture anything shown hereon without permission from THE TECHNICAL MATERIEL CORPORATION to the user. This drawing is loaned for mutual assistance and is subject to recall at any time.

5 4 3 2 1

| REVISIONS | | | | | | | |
|-----------|-------|------|------|-----|---------------------------------|----------|----------|
| EMN NO. | DRAFT | CHKD | ZONE | LTR | DESCRIPTION | DATE | APPROVED |
| Ø | | | | | ORIGINAL RELEASE FOR PRODUCTION | 10-20-72 | |



4 HOLES - 1/16 DIA. - 6 REQ.

| | | |
|------------|---------------|-----------|
| QTY / UNIT | MODEL USED ON | ASS'Y NO. |
| | APPLICATION | AX5174 |
| | CODE | |

NOTICE TO PERSONS RECEIVING THIS DRAWING
 THE TECHNICAL MATERIEL CORPORATION claims proprietary right in the material disclosed hereon. This drawing is issued in confidence for engineering information only and may not be reproduced or used to manufacture anything shown hereon without permission from THE TECHNICAL MATERIEL CORPORATION to the user. This drawing is loaned for mutual assistance and is subject to recall at any time.

| | | |
|-------------|----------|-----------|
| DECIMALS | TOLS. | FRACTIONS |
| .X ± .05 | 1/64 | ANGLES |
| .XX ± .01 | 0° - 30' | |
| .XXX ± .005 | | |

UNLESS OTHERWISE SPECIFIED DIMENSIONS ARE IN INCHES AND INCLUDE CHEMICALLY APPLIED OR PLATED FINISHES

MATERIAL .064 ALUM
 5052 H.32
 FINISH S520
 BLUE GRAY TEX. VINI.

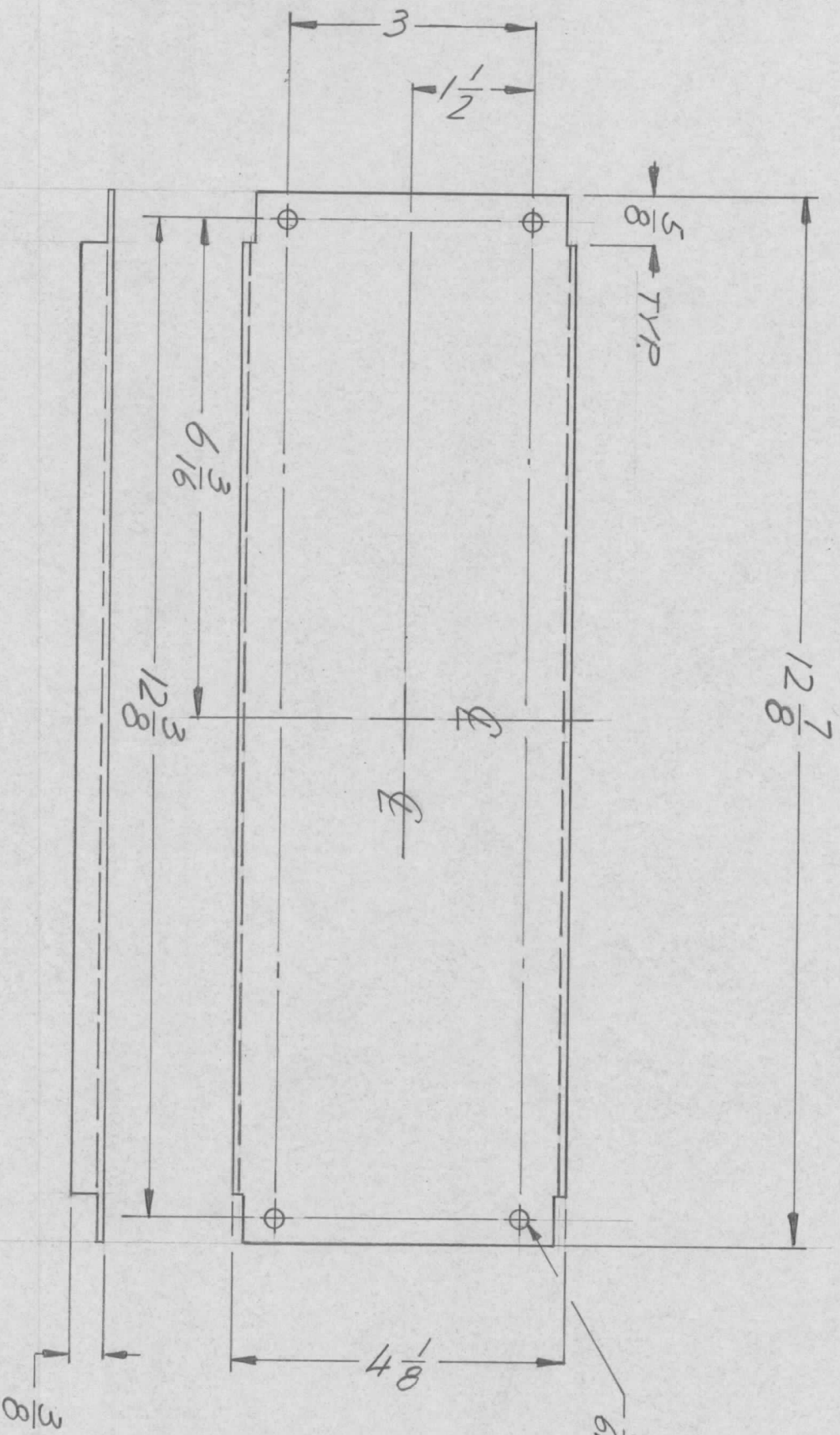
| REQ'D ITEM | PART NUMBER | DESCRIPTION | SYM. |
|--|-------------|-------------|------|
| LIST OF MATERIAL | | | |
| THE TECHNICAL MATERIEL CORP. MAMARONECK, NEW YORK | | | |

| | |
|----------------|------|
| FINAL APPROVAL | DATE |
| Mech. DES. | DATE |
| ELECT. DES. | DATE |
| CHECKED | DATE |
| DRAWN | DATE |

| | | | |
|-------|-----------------|---------|--------|
| SIZE | CODE IDENT. NO. | DWG NO. | ISSUE |
| B | 82679 | M56407 | Ø |
| SCALE | 1/2 | SHEET | 1 OF 1 |

COVER

| REVISIONS | | | | | | | |
|------------|-------|------|------|-----|---------------------------------|----------|----------|
| E.M.N. NO. | DRAFT | CHKD | ZONE | LTR | DESCRIPTION | DATE | APPROVED |
| | EG | | | Ø | ORIGINAL RELEASE FOR PRODUCTION | 10-20-72 | |



13/64 DIA. (4 REQ.)

MATERIAL
 .064 ALUM PERFORATED.
 PERFORATIONS TO BE 1/8 DIA
 ON 3/16 CENTERS

FINISH
 S520 BLUE GRAY TEX. VINYL

| REQ'D ITEM | PART NUMBER | DESCRIPTION | SYM. |
|------------|-------------|------------------|------|
| F.B. | | LIST OF MATERIAL | |

| FINAL APPROVAL | MECH. DES. | DATE | DATE |
|--|------------------------------|--------------------|------|
| <i>[Signature]</i> | | | |
| ELECT. DES. <td> <td>DATE <td>DATE</td> </td></td> | <td>DATE <td>DATE</td> </td> | DATE <td>DATE</td> | DATE |
| CHECKED <td> <td>DATE <td>DATE</td> </td></td> | <td>DATE <td>DATE</td> </td> | DATE <td>DATE</td> | DATE |
| DRAWN | GE | DATE | DATE |

| QTY / UNIT | MODEL USED ON | ASS'Y NO. |
|------------|---------------|-----------|
| | APPLICATION | AX 51724 |
| | CODE | |

NOTICE TO PERSONS RECEIVING THIS DRAWING
 THE TECHNICAL MATERIEL CORPORATION claims proprietary right in the material disclosed hereon. This drawing is issued in confidence for engineering information only and may not be reproduced or used to manufacture anything shown hereon without permission from THE TECHNICAL MATERIEL CORPORATION to the user. This drawing is loaned for mutual assistance and is subject to recall at any time.

| DECIMALS | TOLS. | FRACTIONS |
|-------------|-------|-----------|
| X ± .05 | | 1/64 |
| .XX ± .01 | | ANGLES |
| .XXX ± .005 | | 0° .30' |

UNLESS OTHERWISE SPECIFIED DIMENSIONS ARE IN INCHES AND INCLUDE CHEMICALLY APPLIED OR PLATED FINISHES

FINISH AS NOTED

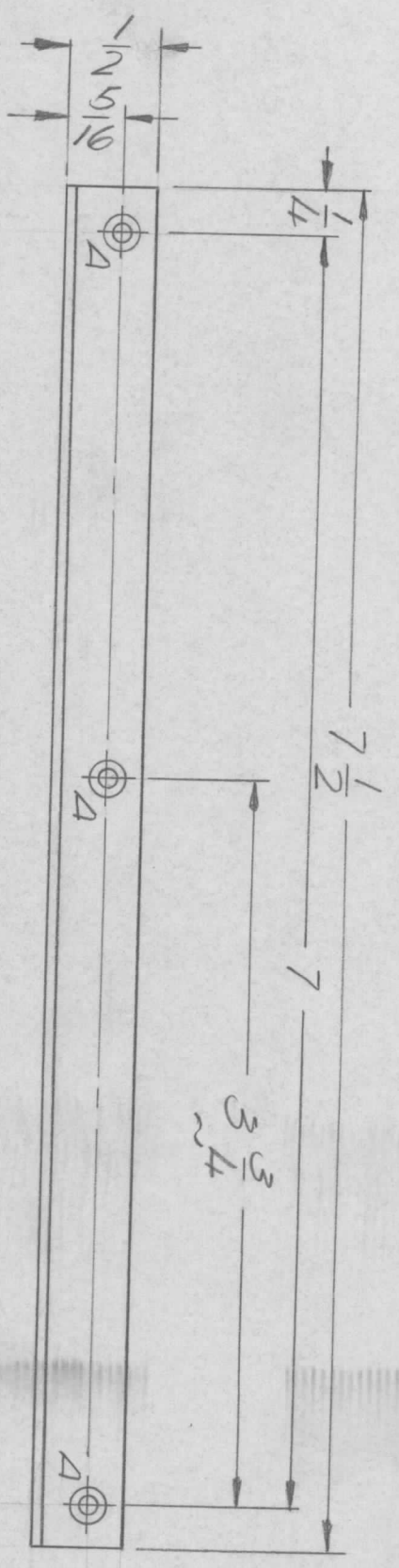
AS NOTED

| SIZE | CODE IDENT. NO. | DWG NO. | ISSUE |
|-------|-----------------|---------|-------|
| B | 82679 | MS 6408 | Ø |
| SCALE | SHEET | | OF |
| 1/2 | 1 | 1 | 1 |

THE TECHNICAL MATERIEL CORP.
 MAMARONECK, NEW YORK

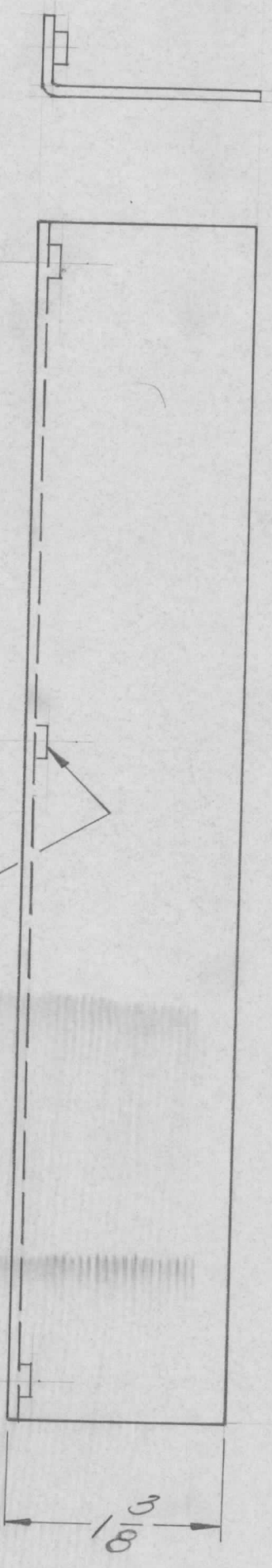
Cover Perf Top
 COVER PERF TOP

| REVISIONS | | | | | | | |
|-----------|-------|------|------|-----|---------------------------------|----------|----------|
| EMN NO. | DRAFT | CHKD | ZONE | LTR | DESCRIPTION | DATE | APPROVED |
| | GE | | | X1 | DIM 3/4 WAS 4 | 11/21/72 | |
| | SP | | | Ø | ORIGINAL RELEASE FOR PRODUCTION | 11/21/72 | |



① MT. AS SHOWN

2 HOLES—.191-.194 DIA.—3 REQ.



| REQ'D | ITEM | PART NUMBER | DESCRIPTION | SYM. |
|-------|------|-------------|----------------------|------|
| 3 | 1 | NT1290632-3 | NUT ROUND SWAGE TYPE | A |

LIST OF MATERIAL

THE TECHNICAL MATERIEL CORP.
MAMARONECK, NEW YORK
SHIELD, P.C. BOARD

UNLESS OTHERWISE SPECIFIED DIMENSIONS ARE IN INCHES AND INCLUDE CHEMICALLY APPLIED OR PLATED FINISHES

DECIMALS: .X ± .05, .XX ± .01, .XXX ± .005
FRACTIONS: 1/64, ANGLES: ° 30'

QTY / UNIT: 1
MODEL USED ON: RSU-1
ASS'Y NO.:
APPLICATION: CODE:

THE TECHNICAL MATERIEL CORPORATION claims proprietary right in the material disclosed hereon. This drawing is issued in confidence for engineering information only and may not be reproduced or used to manufacture anything shown hereon without permission from THE TECHNICAL MATERIEL CORPORATION to the user. This drawing is loaned for mutual assistance and is subject to recall at any time.

FINAL APPROVAL: [Signature]
MECH. DES. ALP
ELECT. DES. [Blank]
CHECKED: GE
DRAWN: GE

DATE: 11/20/72
DATE: [Blank]
DATE: 11/12

MATERIAL: .051 ALUM
5052H32
FINISH: SH0L
VEL, IRIDITE

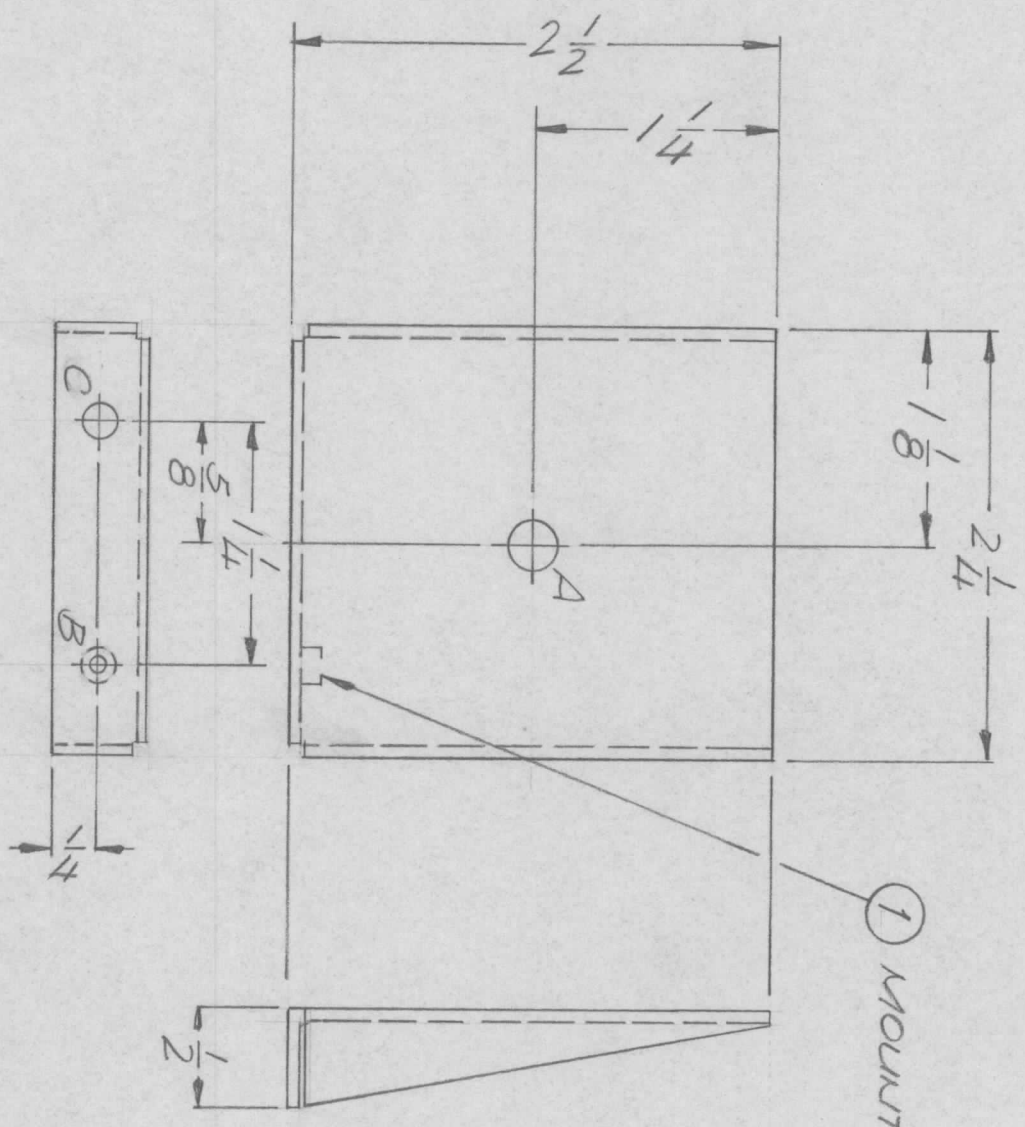
SIZE: B
CODE IDENT. NO.: 82679
DWG NO.: MS 6412

SCALE: 1/8"

SHEET: [Blank] OF [Blank]

ISSUE: [Blank]

| REVISIONS | | | | | | | |
|-----------|-------|------|------|-----|---------------------------------|----------|----------|
| EM.N. NO. | DRAFT | CHKD | ZONE | LTR | DESCRIPTION | DATE | APPROVED |
| | (D) | | | | ORIGINAL RELEASE FOR PRODUCTION | 12/14/72 | |



HOLE DESCRIPTION REQ.
 A — 1/4 DIA. — 1
 B — .191-.194 DIA. — 1
 C — 1/164 DIA. — 1

| REQ'D ITEM | PART NUMBER | DESCRIPTION | SYM. |
|------------|--------------|-------------------|------|
| 1 | KT129-0632-4 | KUUT. PLAIN ROUND | |

| | | |
|-------------|---------------|-----------|
| QTY / UNIT | MODEL USED ON | ASS'Y NO. |
| | TM125 | |
| APPLICATION | | |
| CODE | | |

| | | | |
|------------------------|-----------|-------------|------|
| DECIMALS | FRACTIONS | ELECT. DES. | DATE |
| .X ± .05 | 1/64 | | |
| .XX ± .01 | ANGLES | CHECKED | DATE |
| .XXX ± .005 | 90° .30' | | |
| MATERIAL .064 ALUM. | | | |
| DRAWN CE DATE 12/14/72 | | | |

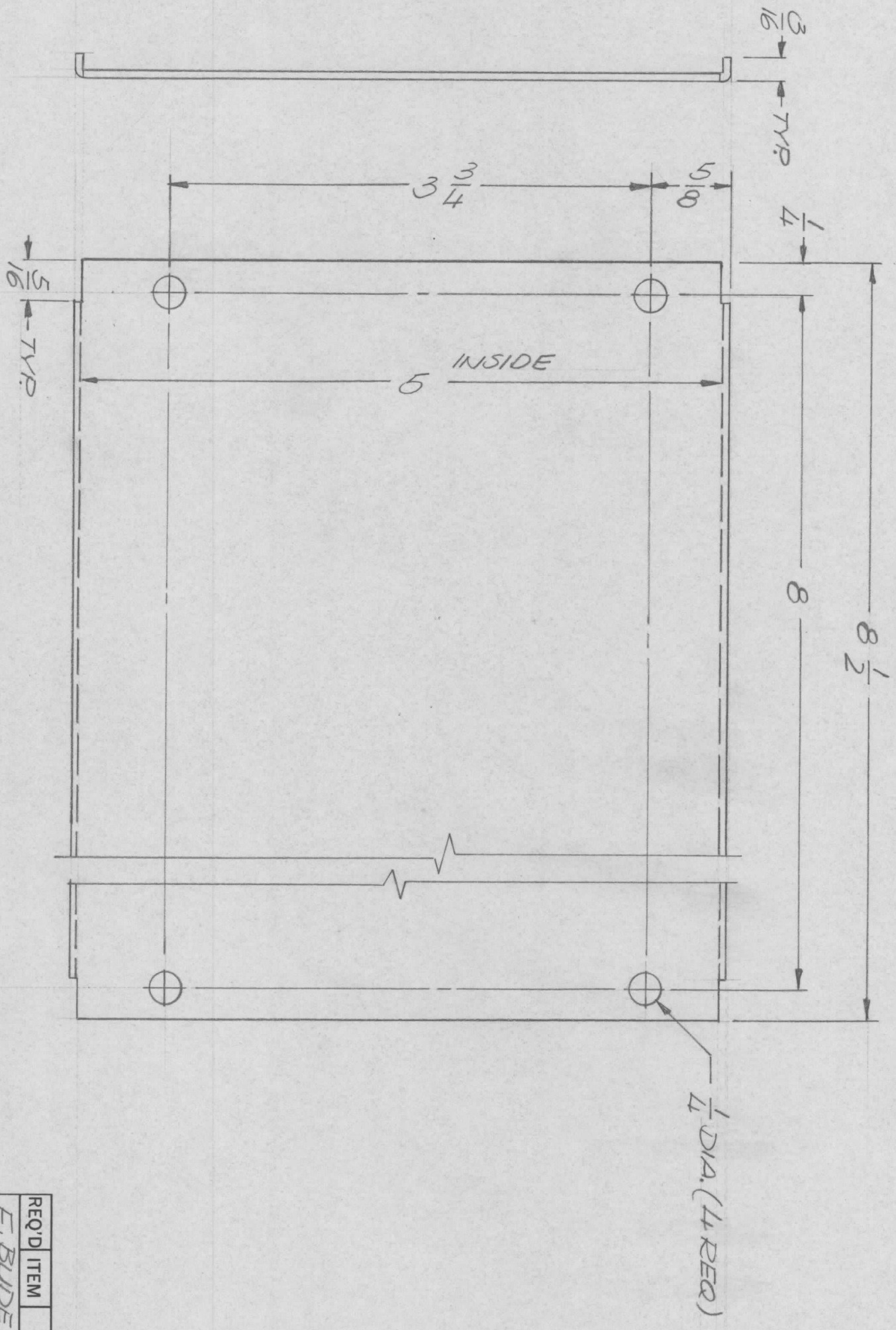
| | | |
|------------------|------|------------------------------|
| FINAL APPROVAL | DATE | THE TECHNICAL MATERIEL CORP. |
| MECH. DES. | DATE | MAMARONECK, NEW YORK |
| LIST OF MATERIAL | | |
| BKT. TORROID | | |

NOTICE TO PERSONS RECEIVING THIS DRAWING
 THE TECHNICAL MATERIEL CORPORATION claims proprietary right in the material disclosed hereon. This drawing is issued in confidence for engineering information only and may not be reproduced or used to manufacture anything shown hereon without permission from THE TECHNICAL MATERIEL CORPORATION to the user. This drawing is loaned for mutual assistance and is subject to recall at any time.

| | |
|--------|--------------|
| FINISH | 5052 H32 |
| FINISH | 5404 |
| FINISH | YEL. IRIDITE |

| | | | |
|-------|-----------------|---------|-------|
| SIZE | CODE IDENT. NO. | DWG NO. | ISSUE |
| B | 82679 | MS6413 | Ø |
| SCALE | 1:1 | SHEET | OF |

| REVISIONS | | | | | | | |
|-----------|-------|------|------|-----|---------------------------------|----------|----------|
| EM.N. NO. | DRAFT | CHKD | ZONE | LTR | DESCRIPTION | DATE | APPROVED |
| | 00 | | | Ø | ORIGINAL RELEASE FOR PRODUCTION | 12/14/72 | |



| | | |
|------------|---------------|----------|
| QTY / UNIT | MODEL USED ON | ASSY NO. |
| | APPLICATION | |
| | CODE | |

KIT 345 & 346-1A

NOTICE TO PERSONS RECEIVING THIS DRAWING
 THE TECHNICAL MATERIEL CORPORATION claims proprietary right in the material disclosed hereon. This drawing is issued in confidence for engineering information only and may not be reproduced or used to manufacture anything shown hereon without permission from THE TECHNICAL MATERIEL CORPORATION to the user. This drawing is loaned for mutual assistance and is subject to recall at any time.

| | |
|---|-----------|
| UNLESS OTHERWISE SPECIFIED DIMENSIONS ARE IN INCHES AND INCLUDE CHEMICALLY APPLIED OR PLATED FINISHES | |
| DECIMALS | FRACTIONS |
| .X ± .05 | 1/64 |
| .XX ± .01 | ANGLES |
| .XXX ± .005 | ° ± .30' |

MATERIAL: 051 ALUM
 5052 H32
 FINISH: S1011
 YEL IRIDITE

| | | |
|------------|-------------|----------|
| REQ'D ITEM | PART NUMBER | DATE |
| F. BUDETTI | | 12/15/72 |

| | |
|--------------------|----------|
| FINAL APPROVAL | DATE |
| <i>[Signature]</i> | 12/15/72 |

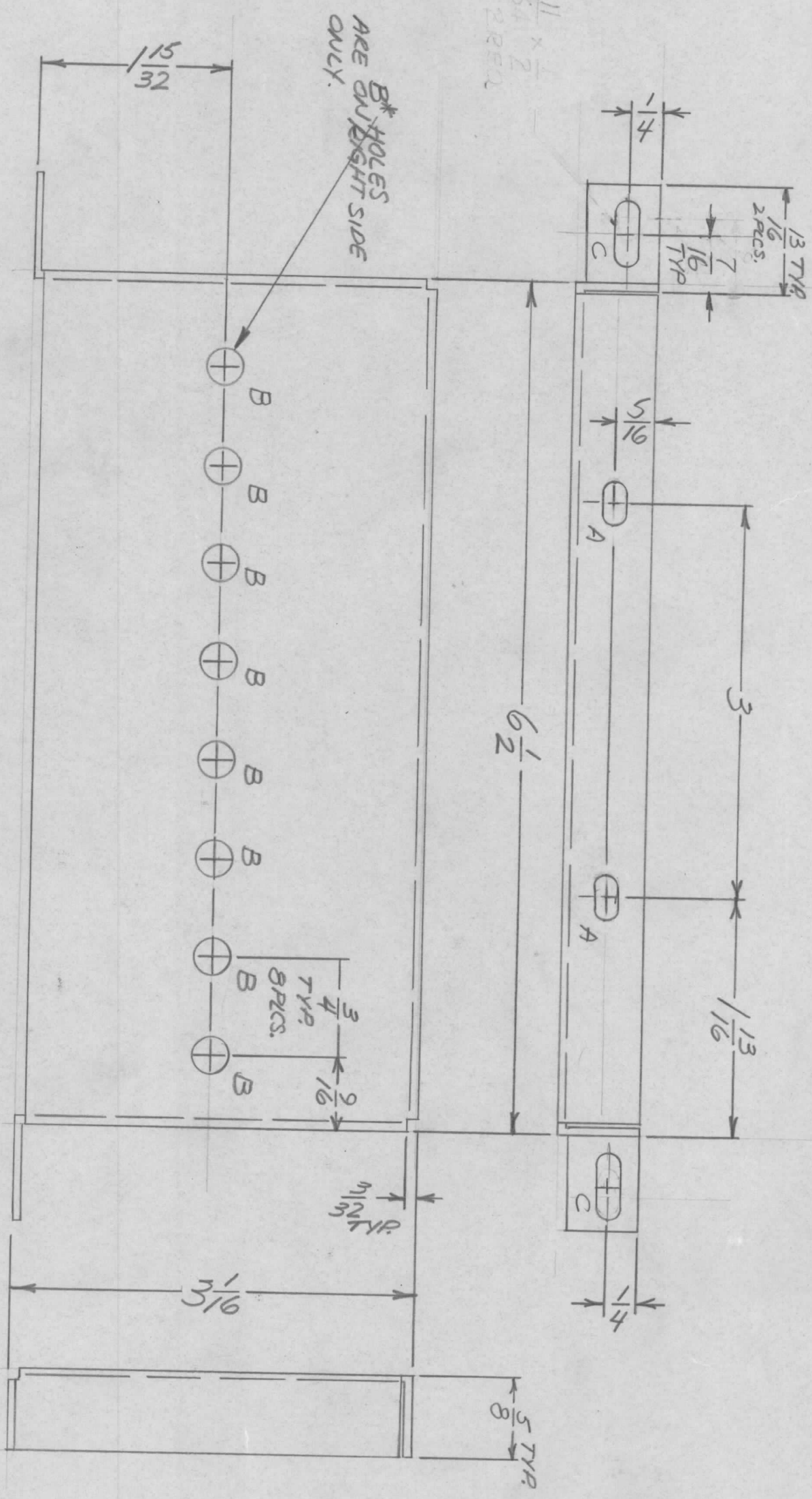
| | |
|-------------|----------|
| ELECT. DES. | DATE |
| CHECKED | DATE |
| DRAWN | DATE |
| GE | 12/14/72 |

| REQ'D ITEM | PART NUMBER | DESCRIPTION | SYM. |
|------------|-------------|-------------|------|
|------------|-------------|-------------|------|

LIST OF MATERIAL
 THE TECHNICAL MATERIEL CORP.
 MAMARONECK, NEW YORK
 COVER, BOTTOM

| | | | |
|-------|-----------------|---------|-------|
| SIZE | CODE IDENT. NO. | DWG NO. | ISSUE |
| B | 82679 | MS 6415 | Ø |
| SCALE | 1:1 | SHEET | OF |

A HOLES - 11/64 X 11/32 SLOT - 2 REQ.
 * B HOLES - 1/4 DIA - 8 REQ.
 C HOLES 11/64 X 1/2 SLOT 2 REQ.



| EM.N. NO. | DRAFT | CHKD | ZONE | LTR | DESCRIPTION | DATE | APPROVED |
|-----------|-------|------|------|-----|-----------------------|---------|----------|
| 21341 | EDL | YJB | | A | 2" C" HOLES RELOCATED | 1-26-76 | OK |

| | | |
|----------|--------------|------------|
| MSG419-1 | AS SHOWN | LEFT SIDE |
| MSG419-2 | MIRROR IMAGE | RIGHT SIDE |

| | | |
|-------------|---------------|-----------|
| QTY / UNIT | MODEL USED ON | ASS'Y NO. |
| 1 EACH | TM 125 | |
| APPLICATION | | |
| CODE | | |

| | |
|-------------|-----------|
| DECIMALS | FRACTIONS |
| X ± .05 | 1/64 |
| .XX ± .01 | ANGLES |
| .XXX ± .005 | 0° - 30° |

UNLESS OTHERWISE SPECIFIED DIMENSIONS ARE IN INCHES AND INCLUDE CHEMICALLY APPLIED OR PLATED FINISHES

MATERIAL: .051 ALUM.
 S052-H32
 FINISH: S404 YEL. PLATE

| REQ'D | ITEM | PART NUMBER | DESCRIPTION | SYM. |
|-------|---------|-------------|------------------|------|
| | 0. POSE | | LIST OF MATERIAL | |

| | |
|----------------|------|
| FINAL APPROVAL | DATE |
| Mech. DES. | DATE |
| ELECT. DES. | DATE |
| CHECKED | DATE |
| DRAWN | DATE |

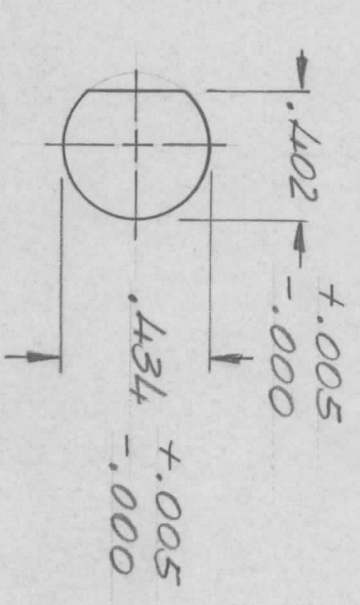
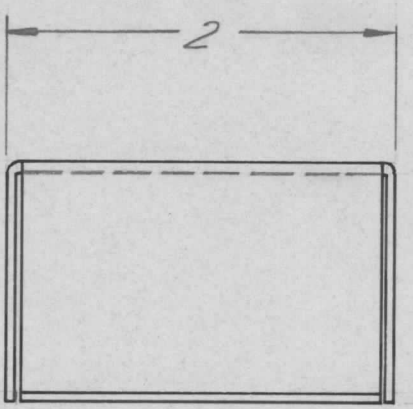
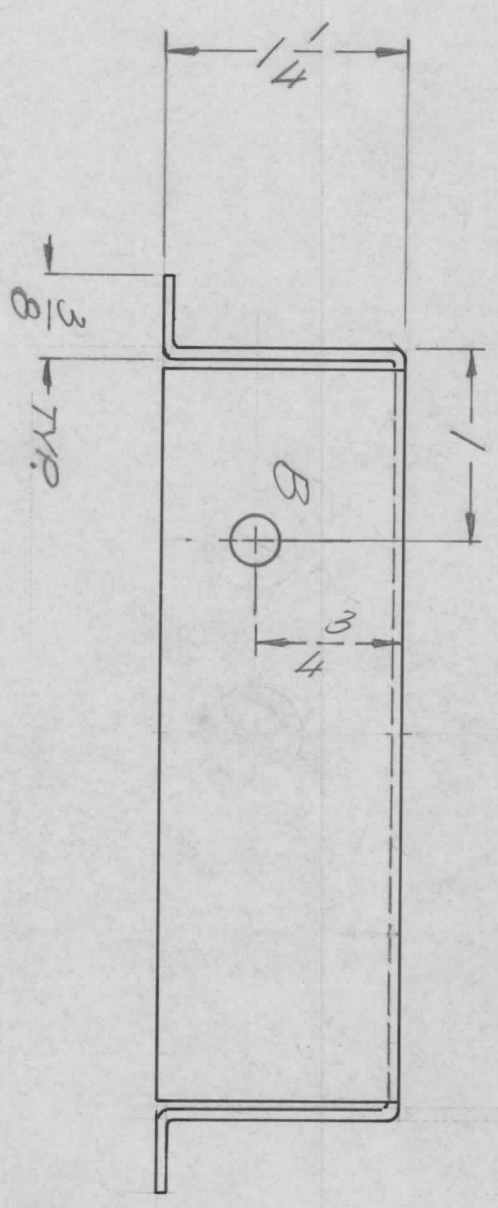
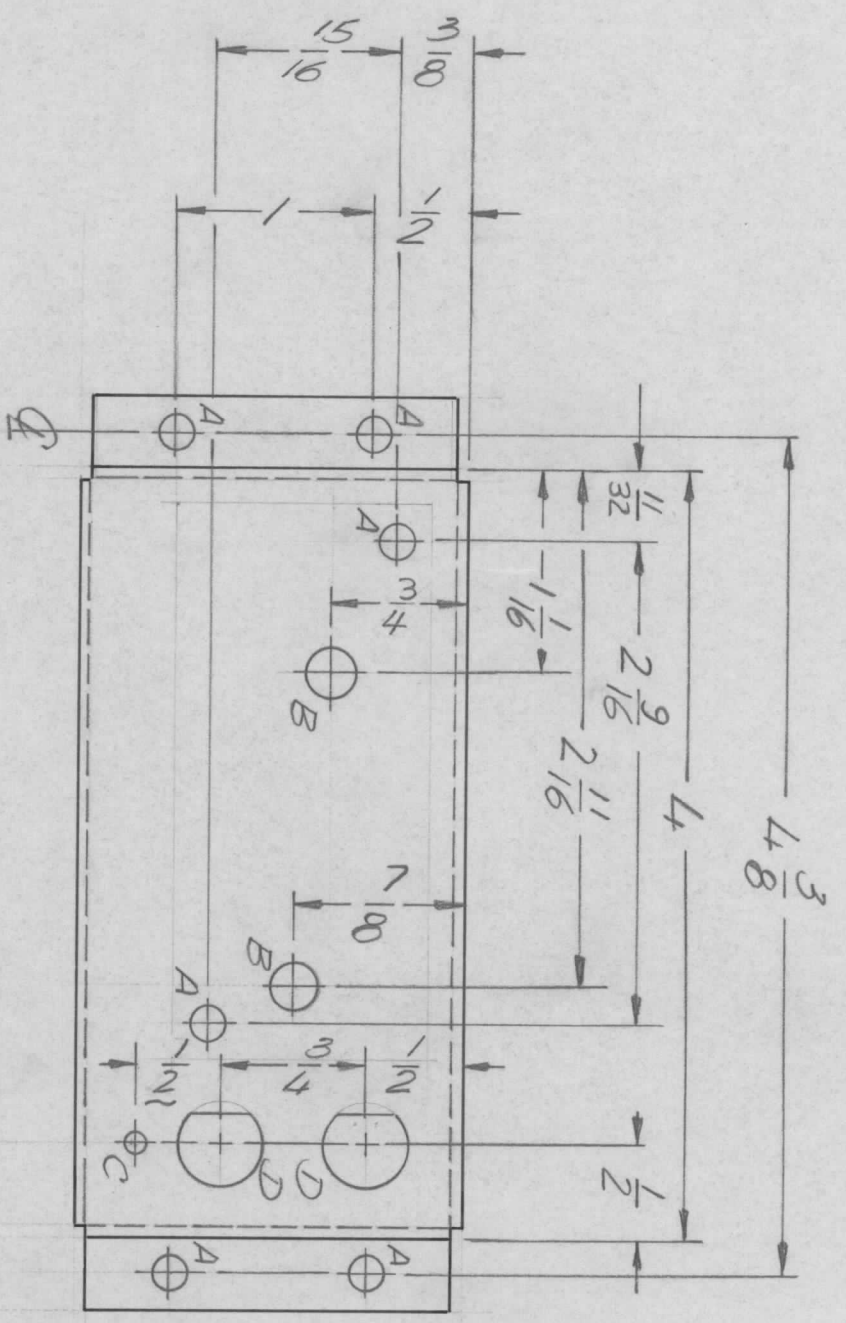
Al Petrecca

| | | | |
|-------|-----------------|----------|----------|
| SIZE | CODE IDENT. NO. | DWG. NO. | ISSUE |
| B | 82679 | MSG419 | A |
| SCALE | NTS | | SHEET OF |

NOTICE TO PERSONS RECEIVING THIS DRAWING

THE TECHNICAL MATERIEL CORPORATION claims proprietary right in the material disclosed hereon. This drawing is issued in confidence for engineering information only and may not be reproduced or used to manufacture anything shown hereon without permission from THE TECHNICAL MATERIEL CORPORATION to the user. This drawing is loaned for mutual assistance and is subject to recall at any time.

| REVISIONS | | | | DATE | APPROVED |
|-----------|-------|------|------|------|---------------------------|
| EM.N. NO. | DRAFT | CHKD | ZONE | LTR | DESCRIPTION |
| | A. | | | Ø | ORIGINAL RELEASE FOR PROD |
| | | | | | 3/23/73 |



D DETAIL

HOLE DESCRIPTION REQ.

- A - 11/64 DIA - 6
- B - 1/4 DIA - 3
- C - 7/64 DIA. - 1
- D - SEE DETAIL - 2

REF. LD 2542

| REQ'D ITEM | PART NUMBER | DESCRIPTION | SYM. |
|------------|-------------|--|------|
| F.B. | | THE TECHNICAL MATERIEL CORP. MAMARONECK, NEW YORK | |

| | | |
|-------------|---------------|-----------|
| QTY / UNIT | MODEL USED ON | ASS'Y NO. |
| 1 | KIT 375 | AX746 |
| APPLICATION | | |
| CODE | | |

NOTICE TO PERSONS RECEIVING THIS DRAWING
 THE TECHNICAL MATERIEL CORPORATION claims proprietary right in the material disclosed hereon. This drawing is issued in confidence for engineering information only and may not be reproduced or used to manufacture anything shown hereon without permission from THE TECHNICAL MATERIEL CORPORATION to the user. This drawing is loaned for mutual assistance and is subject to recall at any time.

| DECIMALS | TOLS. | FRACTIONS | ANGLES | DATE |
|-------------|-------|-----------|--------|---------|
| .X ± .05 | | 1/64 | | 3/19/73 |
| .XX ± .01 | | | | 3/27/73 |
| .XXX ± .005 | | Ø .30' | | |

MATERIAL .064 ALUMI

5052 H32

FINISH SL404

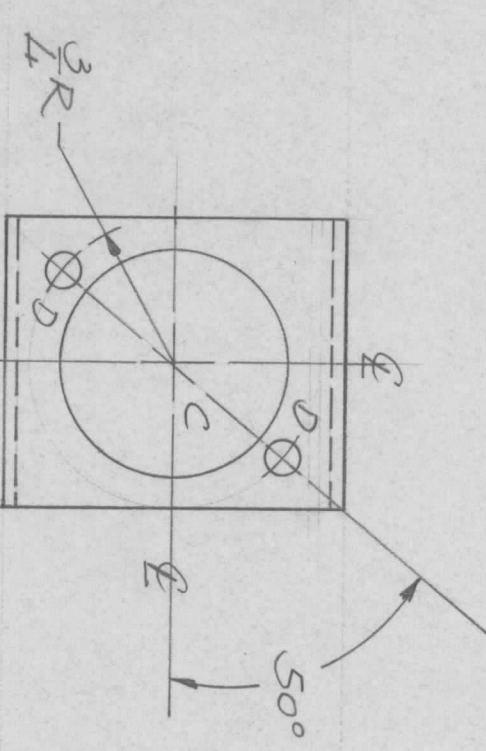
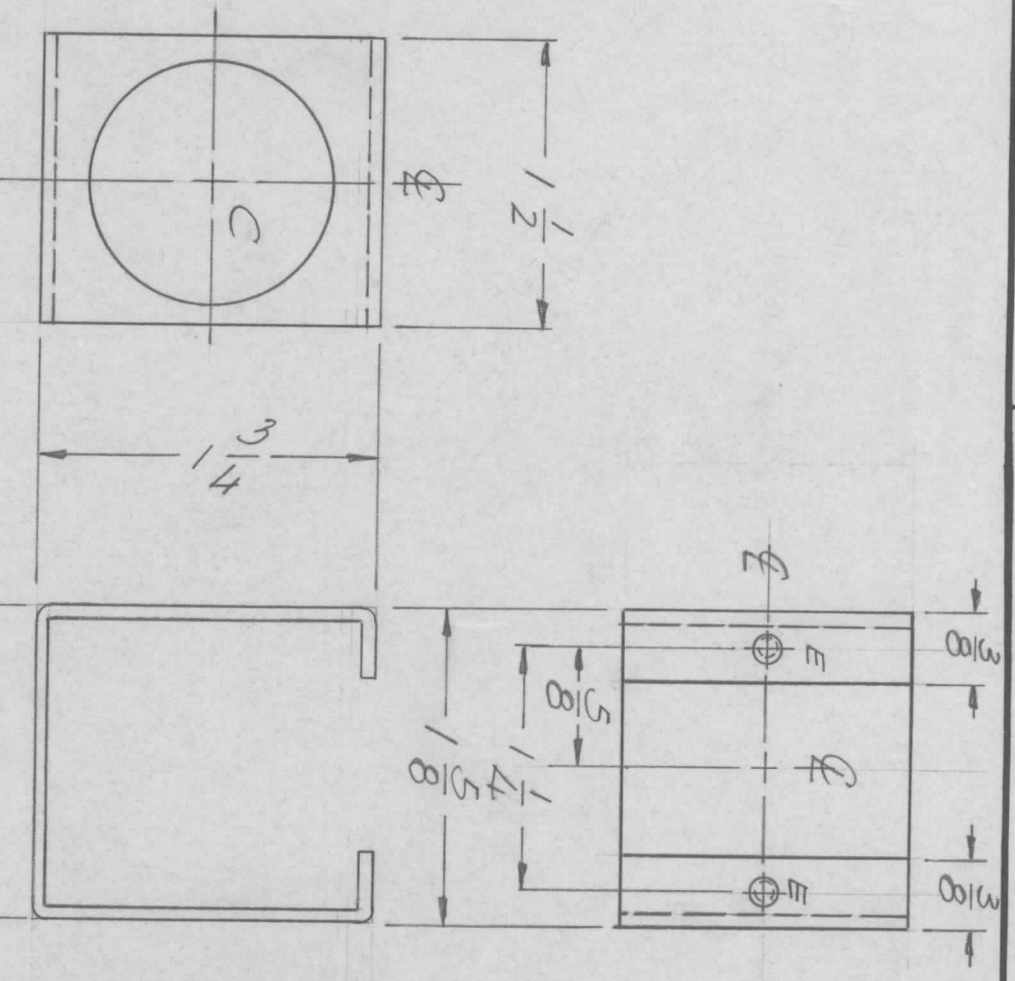
YEL. IRIDITE

| SIZE | CODE IDENT. NO. | DWG NO. | ISSUE |
|------|-----------------|----------|-------|
| B | 82679 | MIS 6458 | Ø |

17MMH2 SWITCHING BOX

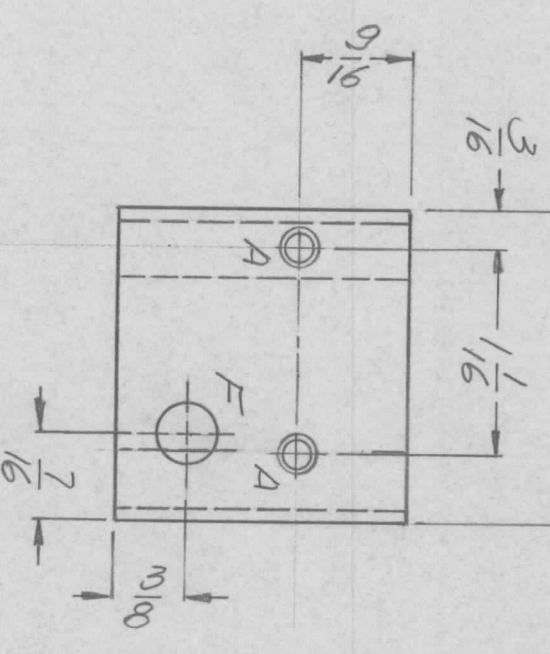
SCALE 1:1

| REVISIONS | | | | DATE | APPROVED |
|------------|-------|------|------|------|---------------------------|
| E.M.N. NO. | DRAFT | CHKD | ZONE | LTR | DESCRIPTION |
| | 0. | | | Ø | ORIGINAL RELEASE FOR PROD |
| | | | | | 3/23/73 |



HOLE DESCRIPTION REQ.

- A — CSNK 0440 SC. — 2
- B — 1/3/16 DIA. — 2
- C — 11/64 DIA — 2
- D — DRILL & TAP 0440 — 2
- E — 5/16 DIA. — 1



| REQ'D ITEM | PART NUMBER | DESCRIPTION | SYM. |
|------------|-------------|------------------|------|
| F.B. | | LIST OF MATERIAL | |

| DATE | DATE | DATE | DATE |
|---------|---------|---------|---------|
| 3/19/73 | 3/19/73 | 3/19/73 | 3/19/73 |

THE TECHNICAL MATERIEL CORP.
 MAMARONECK, NEW YORK
 HOUSING, SOCKET

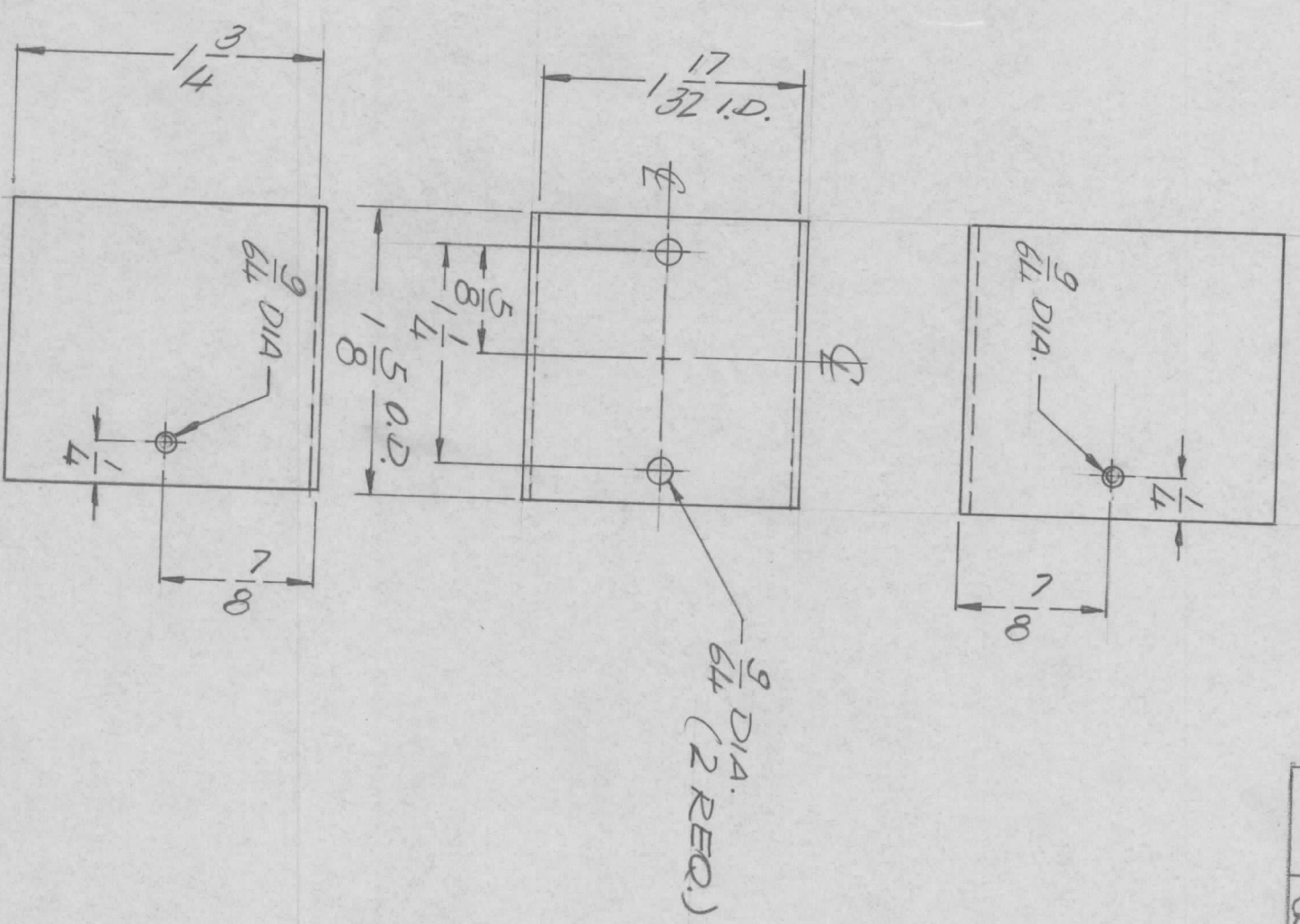
QTY / UNIT: 1
 MODEL USED ON: KIT 375
 ASS'Y NO.: AX 745
 APPLICATION: [blank]
 CODE: [blank]

UNLESS OTHERWISE SPECIFIED DIMENSIONS ARE IN INCHES AND INCLUDE CHEMICALLY APPLIED OR PLATED FINISHES
 DECIMALS: X ± .05 TOLS. FRACTIONS: 1/64 ANGLES: 0° .30'
 .XX ± .01
 .XXX ± .005
 MATERIAL: .064 ALUM 5052H32
 FINISH: 5104
 YEL IRIDITE

FINAL APPROVAL: [Signature]
 MECH. DES.: [Signature]
 ELECT. DES.: [Signature]
 CHECKED: [Signature]
 DRAWN: GE
 DATE: 3-17-73
 SIZE: B
 CODE IDENT. NO.: 82679
 DWG NO.: MS 6460
 SCALE: 1/1
 SHEET: [blank] OF [blank]

NOTICE TO PERSONS RECEIVING THIS DRAWING
 THE TECHNICAL MATERIEL CORPORATION claims proprietary right in the material disclosed hereon. This drawing is issued in confidence for engineering information only and may not be reproduced or used to manufacture anything shown hereon without permission from THE TECHNICAL MATERIEL CORPORATION to the user. This drawing is loaned for mutual assistance and is subject to recall at any time.

| REVISIONS | | | | DATE | APPROVED |
|-----------|-------|------|------|------|-----------------------|
| EMN NO. | DRAFT | CHKD | ZONE | LTR | DESCRIPTION |
| | A | | | Ø | ORIG RELEASE FOR PROD |
| | | | | | 3/28/73 |



| | |
|---------------|---------|
| QTY / UNIT | 1 |
| MODEL USED ON | KIT 375 |
| ASS'Y NO. | AX 745 |
| APPLICATION | |
| CODE | |

| |
|---|
| UNLESS OTHERWISE SPECIFIED DIMENSIONS ARE IN INCHES AND INCLUDE CHEMICALLY APPLIED OR PLATED FINISHES |
| DECIMALS .X ± .05 TOLS. .XX ± .01 ANGLES 1/64 0° .30' |
| FRACTIONS 1/64 0° .30' |
| MATERIAL .051 |
| ALUM 5052H32 |
| FINISH S404 |
| YEL IRIDITE |

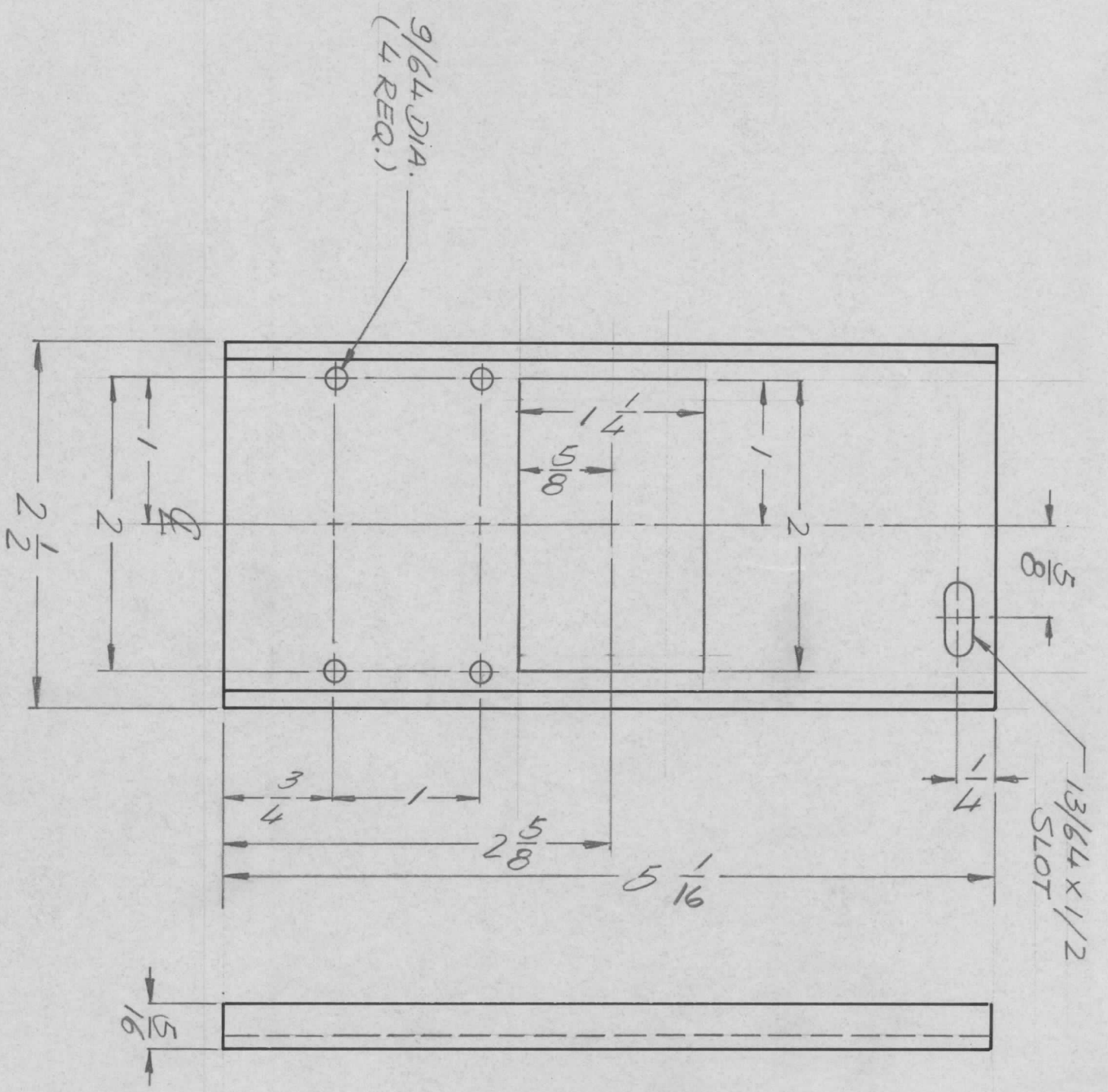
| | | | |
|------------|-------------|------------------------------|------|
| REQ'D ITEM | PART NUMBER | DESCRIPTION | SYM. |
| F.B. | | THE TECHNICAL MATERIEL CORP. | |
| | | MAMARONECK, NEW YORK | |
| | | COVER, SOCKET | |

NOTICE TO PERSONS RECEIVING THIS DRAWING
 THE TECHNICAL MATERIEL CORPORATION claims proprietary right in the material disclosed hereon. This drawing is issued in confidence for engineering information only and may not be reproduced or used to manufacture anything shown hereon without permission from THE TECHNICAL MATERIEL CORPORATION to the user. This drawing is loaned for mutual assistance and is subject to recall at any time.

| | | | | | | | | | |
|----------------|---------|------------|------|-------------|---------|---------|------|-------|--------|
| FINAL APPROVAL | DATE | MECH. DES. | DATE | ELECT. DES. | DATE | CHECKED | DATE | DRAWN | DATE |
| | 3/19/73 | | | | 3/19/73 | | | GE | 3/7/73 |

| | | | |
|-------|-----------------|---------|-------|
| SIZE | CODE IDENT. NO. | DWG NO. | ISSUE |
| B | 82679 | M56461 | Ø |
| SCALE | 1:1 | | |

| REVISIONS | | | | DATE | APPROVED |
|-----------|-------|------|------|------|---------------------------------|
| EM.N. NO. | DRAFT | CHKD | ZONE | LTR | DESCRIPTION |
| | DV | | | Ø | ORIGINAL RELEASE FOR PRODUCTION |
| | | | | | 11/30/73 |



| | | | | | |
|-------------|---|---------------|---------|-----------|---------|
| QTY / UNIT | 1 | MODEL USED ON | AX 5176 | ASS'Y NO. | AX 5179 |
| APPLICATION | | | | | |
| CODE | | | | | |

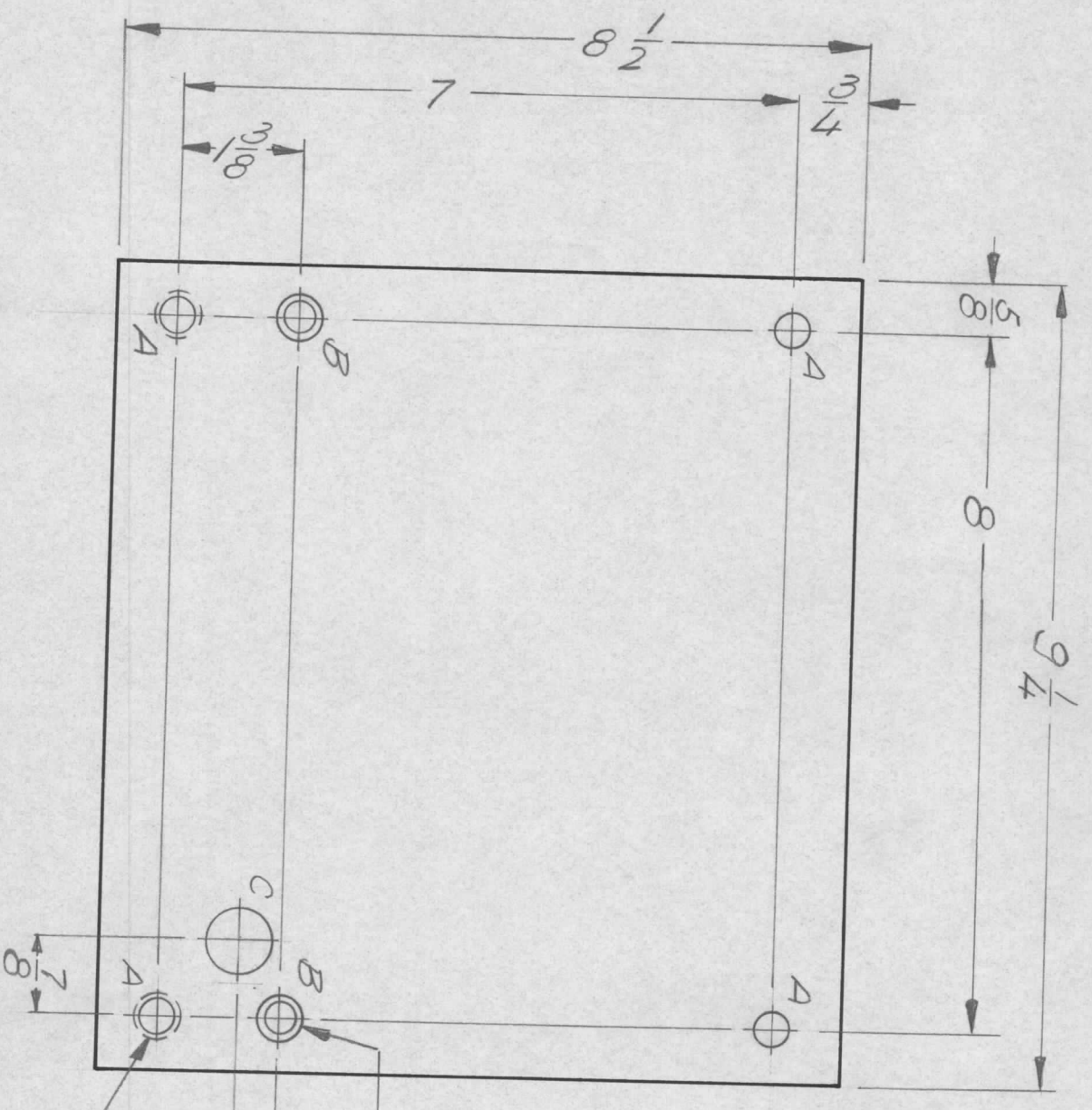
NOTICE TO PERSONS RECEIVING THIS DRAWING
 THE TECHNICAL MATERIEL CORPORATION claims proprietary right in the material disclosed hereon. This drawing is issued in confidence for engineering information only and may not be reproduced or used to manufacture anything shown hereon without permission from THE TECHNICAL MATERIEL CORPORATION to the user. This drawing is loaned for mutual assistance and is subject to recall at any time.

| | | | |
|----------|--------------|--------|----------|
| DECIMALS | .X ± .05 | TOLS. | 1/64 |
| | .XX ± .01 | ANGLES | 0° - 30' |
| | .XXX ± .005 | | |
| MATERIAL | ALUM 5052H32 | | |
| FINISH | S1404 | | |
| | YEL IRIDIOTE | | |

| | | |
|----------------|-------------|---------|
| REQ'D ITEM | PART NUMBER | DATE |
| FB | | 11/4/73 |
| FINAL APPROVAL | MECH. DES. | DATE |
| ØØØ | | 11-6-73 |
| ELECT. DES. | CHECKED | DATE |
| | GE | 3-6-78 |
| DRAWN | DATE | |

| | | | | |
|------------------------------|-----------------|---------|-------|------|
| LIST OF MATERIAL | | | | SYM. |
| THE TECHNICAL MATERIEL CORP. | | | | |
| MAMARONECK, NEW YORK | | | | |
| PLATE, SUPPORT, FRONT | | | | |
| SIZE | CODE IDENT. NO. | DWG NO. | ISSUE | |
| B | 82679 | MS6465 | Ø | |
| SCALE | 1:1 | SHEET | OF | |

| REVISIONS | | | | | | | |
|-----------|-----|------------------|--------|----------|-------|------|------|
| ZONE | LTR | DESCRIPTION | DATE | E.M.N.NO | DRAFT | CHKD | APPD |
| Ø | | ORIGINAL RELEASE | 5/9/73 | | CS | | |



HOLE DISCRPTION REQ.
 A — 11/32 DIA. — 4
 B — AS NOTED — 2
 C — 3/4 DIA. — 1

DRILL 3/8 DIA. C'S SUK 82° TO 1/2 DIA.
 2 REQ C'S SUK AS SHOWN.

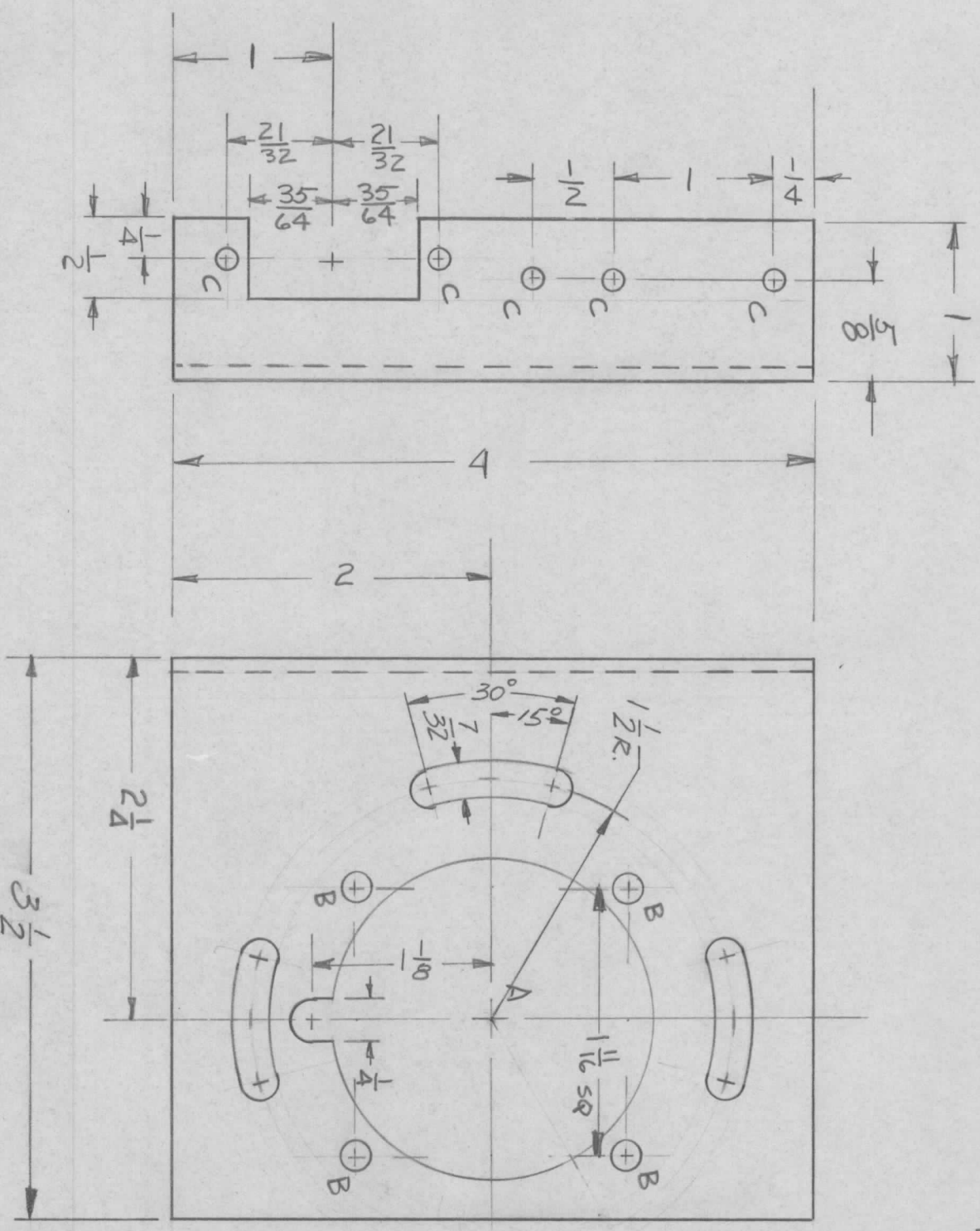
1. MT. AS SHOWN.
 2 (A) HOLES

| | | | |
|---------------|-------------|-------|-------|
| QTY / UNIT | 1 | HELMK | AP150 |
| MODEL USED ON | APPLICATION | | |
| ASS'Y NO. | CODE | | |

| | |
|-------------|--------------|
| DECIMALS | FRACTIONS |
| .X ± .05 | 1/64 |
| .XX ± .01 | TOLS. ANGLES |
| .XXX ± .005 | 90° .30' |
| MATERIAL | 1/8 ALUM |
| FINISH | 5052 H32 |
| | 5104 |
| | VEL. IRIDITE |

| | | | | | | | |
|--|------|-----------------|-------------|-----------|-------------|-------|---|
| REQ'D ITEM | 2 | 1 | NT1294420-6 | NUT ROUND | DESCRIPTION | SYM. | A |
| LIST OF MATERIAL THE TECHNICAL MATERIEL CORP. MAMARONECK, NEW YORK PLATE XEMR | | | | | | | |
| FINAL APPROVAL | G.E. | | DATE | 12/31 | | | |
| MECH. DES. | G.E. | | DATE | 12/31 | | | |
| ELECT. DES. | G.E. | | DATE | 12/31 | | | |
| CHECKED | G.E. | | DATE | 12/31 | | | |
| DRAWN | G.E. | | DATE | 12/31 | | | |
| SIZE | B | CODE IDENT. NO. | 82679 | DWG NO. | MAS 6467 | ISSUE | Ø |
| SCALE | 1/2 | | | | | | |

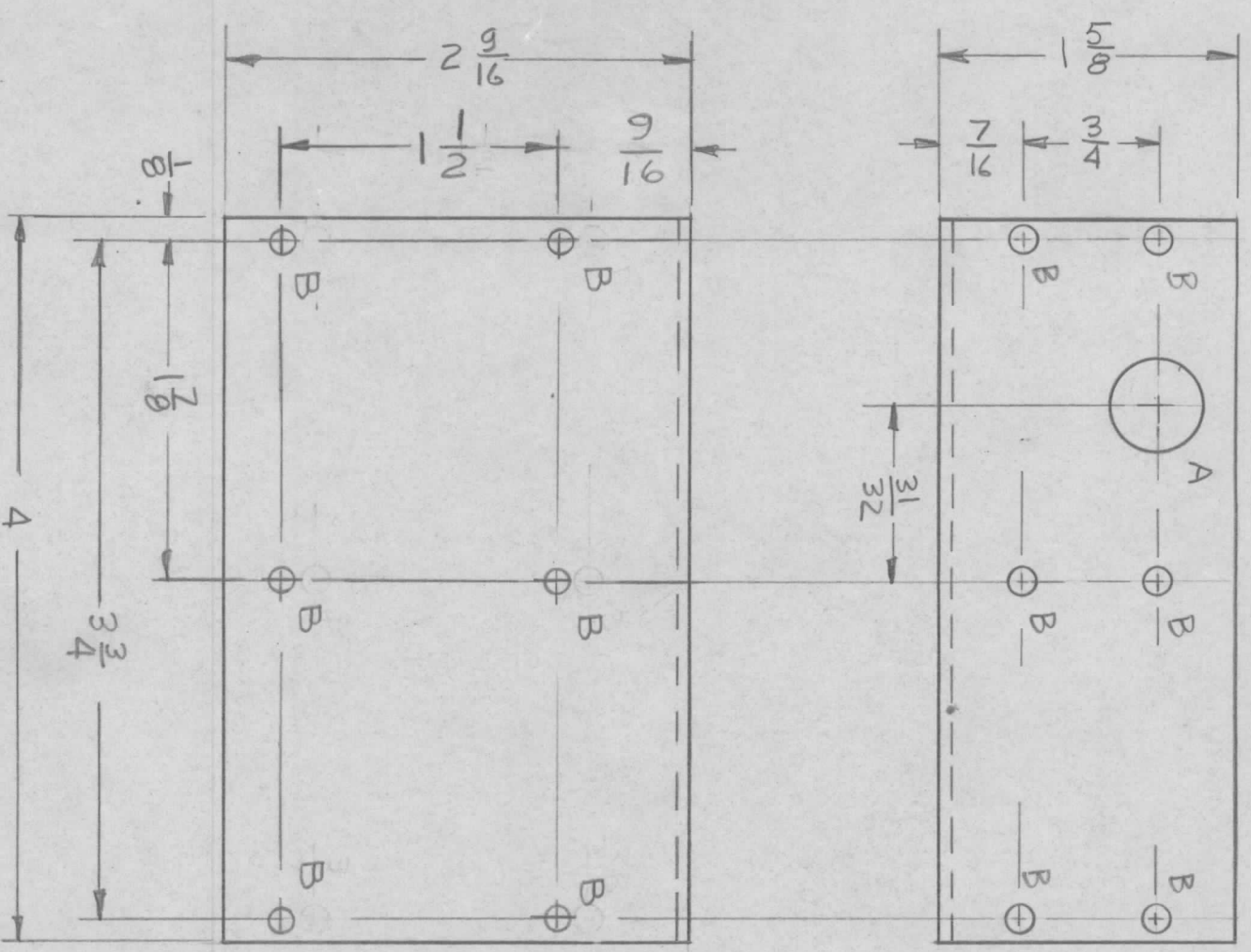
| REVISIONS | | | | | | | |
|-----------|-------|------|------|-----|----------------------------------|----------|----------|
| EM.N. NO. | DRAFT | CHKD | ZONE | LTR | DESCRIPTION | DATE | APPROVED |
| | DV | | | | ORIGINAL RELEASE FOR PRODUCTION | 11/30/73 | |
| 211B | QE | EQ | | A | SHORTEN OVERALL LENGTH WAS 4 1/4 | 12/26/73 | EQ |



A ~ 2" DIA. 1 RECD
 B ~ 1/4" DIA. 4 RECD
 C ~ 1/8" DIA. 5 RECD

| REQ'D ITEM | PART NUMBER | DESCRIPTION | SYM. |
|---|-----------------|-------------|----------|
| LIST OF MATERIAL | | | |
| THE TECHNICAL MATERIEL CORP. MAMARONECK, NEW YORK | | | |
| FINAL APPROVAL | DATE | | |
| MECH. DES. | DATE | | |
| ELECT. DES. | DATE | | |
| CHECKED | DATE | | |
| DRAWN | DATE | | |
| UNLESS OTHERWISE SPECIFIED DIMENSIONS ARE IN INCHES AND INCLUDE CHEMICALLY APPLIED OR PLATED FINISHES | | | |
| DECIMALS | FRACTIONS | | |
| .X ± .05 | 1/64 | | |
| .XX ± .01 | ANGLES | | |
| .XXX ± .005 | 0° - 30° | | |
| MATERIAL .081 ALUM | | | |
| 5052-H32 | | | |
| FINISH S404 YEL IRID | | | |
| NOTICE TO PERSONS RECEIVING THIS DRAWING THE TECHNICAL MATERIEL CORPORATION claims proprietary right in the material disclosed hereon. This drawing is issued in confidence for engineering information only and may not be reproduced or used to manufacture anything shown hereon without permission from THE TECHNICAL MATERIEL CORPORATION to the user. This drawing is loaned for mutual assistance and is subject to recall at any time. | | | |
| QTY / UNIT | MODEL USED ON | ASSY NO. | |
| 1 | AX5176 | AX5177 | |
| APPLICATION | | | |
| CODE | | | |
| SIZE | CODE IDENT. NO. | DWG NO. | ISSUE |
| B | 82679 | MS6471 | A |
| SCALE | | | SHEET OF |

| REVISIONS | | | | | | | |
|-----------|----------|----------|------|-----|----------------------------------|----------|----------|
| EMN. NO. | DRAFT | CHKD | ZONE | LTR | DESCRIPTION | DATE | APPROVED |
| | DV | | | | ORIGINAL RELEASE FOR PRODUCTION | 11/30/73 | <i>Q</i> |
| 21194 | G.D.L. | <i>Q</i> | 5C | A | ON BOTTOM VIEW 9/16 WAS 7/16 | 1-3-75 | <i>Q</i> |
| 21347 | G.D.L. | <i>Q</i> | | B | DIM 3/4 ON THE BOTTOM WAS 9/16 | 1-27-76 | <i>Q</i> |
| 21627 | <i>Q</i> | K.M. | | C | ON PICT: CHG DIM. FR 3/4 TO 9/16 | 2-15-78 | |



A ~ 1/2 DIA. 1 REVD
 B ~ 1/4 DIA 12 REVD

| | | |
|-------------|---------------|-----------|
| QTY / UNIT | MODEL USED ON | ASS'Y NO. |
| 1 | AX5176 | AX5180 |
| APPLICATION | | |
| CODE | | |

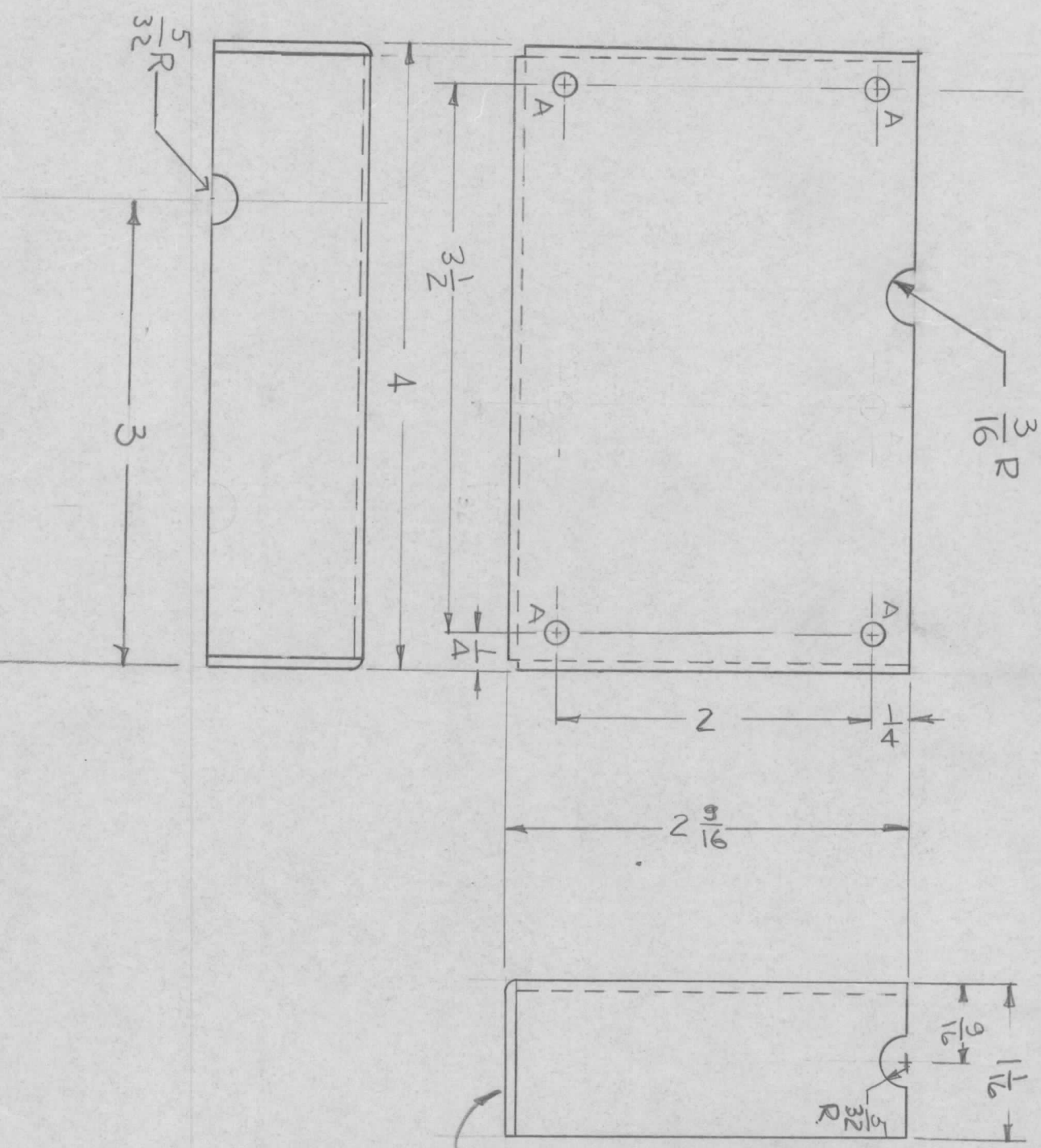
NOTICE TO PERSONS RECEIVING THIS DRAWING
 THE TECHNICAL MATERIEL CORPORATION claims proprietary right in the material disclosed hereon. This drawing is issued in confidence for engineering information only and may not be reproduced or used to manufacture anything shown hereon without permission from THE TECHNICAL MATERIEL CORPORATION to the user. This drawing is loaned for mutual assistance and is subject to recall at any time.

| | |
|----------------------|-----------|
| DECIMALS | FRACTIONS |
| .X ± .05 | 1/64 |
| .XX ± .01 | ANGLES |
| .XXX ± .005 | 90° - 30' |
| MATERIAL .064 ALU4 | |
| FINISH 5052-H32 | |
| FINISH 5404 YEL IRID | |

| | | | |
|--|-----------------|-------------|-------|
| REQ'D ITEM | PART NUMBER | DESCRIPTION | SYM. |
| LIST OF MATERIAL | | | |
| THE TECHNICAL MATERIEL CORP. MAMARONECK, NEW YORK | | | |
| SIZE | CODE IDENT. NO. | DWG NO. | ISSUE |
| B | 82679 | MS6475 | C |
| SCALE | SHEET | | OF |

COVER, COUPLER

| REVISIONS | | | | DATE | APPROVED |
|-----------|-------|------|------|------|---------------------------------|
| EM.N. NO. | DRAFT | CHKD | ZONE | LTR | DESCRIPTION |
| 21346 | CDL | OK | A | Ø | ORIGINAL RELEASE FOR PRODUCTION |
| | | | | | DELETED 2 "A" HOLES |
| | | | | | 4-19-74 |
| | | | | | 1-26-76 |
| | | | | | OK |



OPP
SIDE
IDENTICAL

~ 9/64 DIA.

4 REQ'D

TIGHT CORNERS

| | | | | | |
|-------------|---|---------------|--------|-----------|--------|
| QTY / UNIT | 1 | MODEL USED ON | AX5176 | ASS'Y NO. | AX5180 |
| APPLICATION | | | | | |
| CODE | | | | | |

NOTICE TO PERSONS RECEIVING THIS DRAWING
 THE TECHNICAL MATERIEL CORPORATION claims proprietary right in the material disclosed hereon. This drawing is issued in confidence for engineering information only and may not be reproduced or used to manufacture anything shown hereon without permission from THE TECHNICAL MATERIEL CORPORATION to the user. This drawing is loaned for mutual assistance and is subject to recall at any time.

| | |
|---|--------------|
| UNLESS OTHERWISE SPECIFIED DIMENSIONS ARE IN INCHES AND INCLUDE CHEMICALLY APPLIED OR PLATED FINISHES | |
| DECIMALS | FRACTIONS |
| .X ± .05 | 1/64 |
| .XX ± .01 | TOLS. ANGLES |
| .XXX ± .005 | 90° .30' |
| MATERIAL .064 | |
| ALUM 5052-H32 | |
| FINISH | |
| S404 VEL IRID | |

| | |
|----------------|------|
| FINAL APPROVAL | DATE |
| MECH. DES. | DATE |
| ELECT. DES. | DATE |
| CHECKED | DATE |
| DRAWN | DATE |

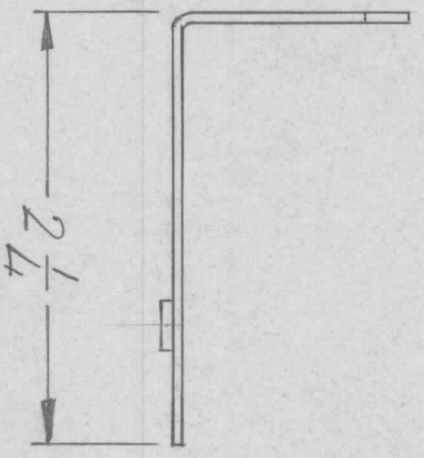
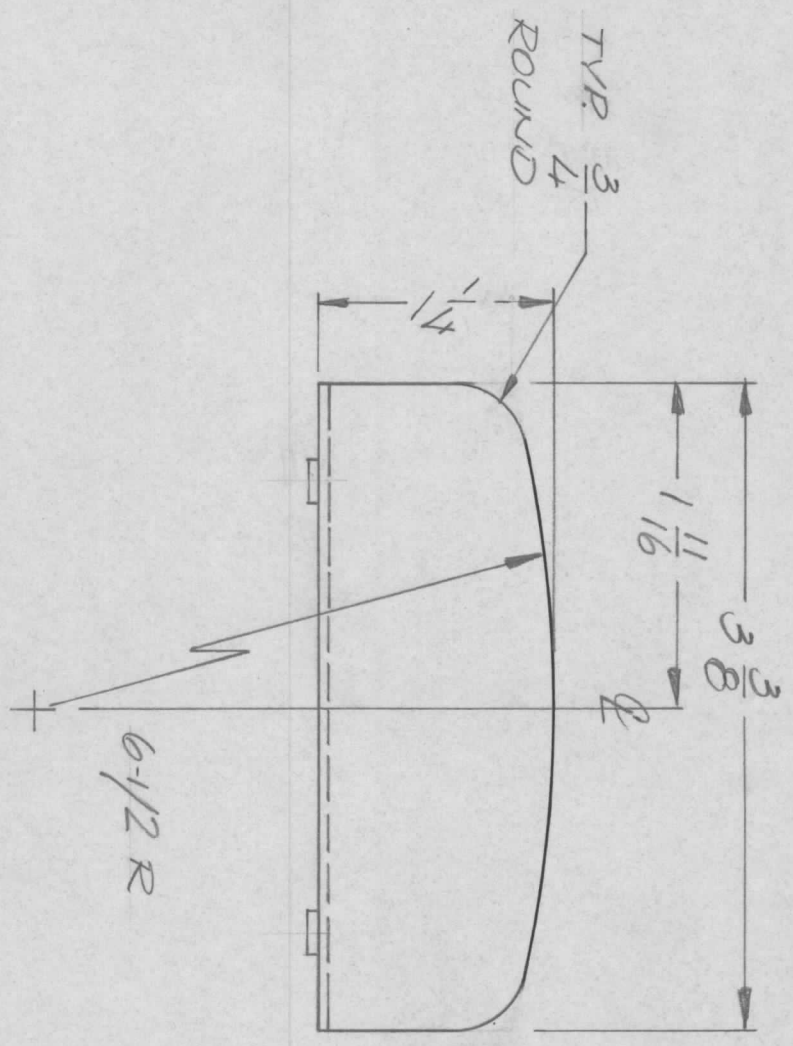
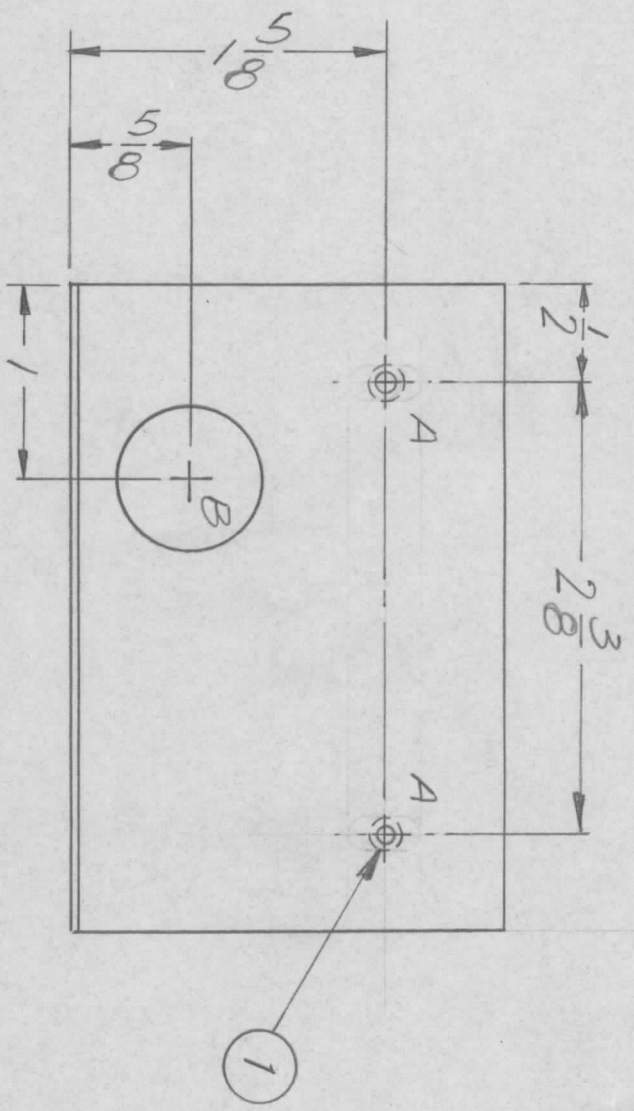
LIST OF MATERIAL

THE TECHNICAL MATERIEL CORP.
 MAMARONECK, NEW YORK

COVER, SENSE BD

| | | | |
|------------|-----------------|-------------|-------|
| REQ'D ITEM | PART NUMBER | DESCRIPTION | SYM. |
| SIZE | CODE IDENT. NO. | DWG NO. | ISSUE |
| B | 82679 | MS6476 | A |
| SCALE | | SHEET | OF |

| REVISIONS | | | | |
|---------------------------------|-------|------|---------|----------|
| EMN. NO. | DRAFT | CHKD | ZONE | LTR |
| | DV. | | | |
| DESCRIPTION | | | DATE | APPROVED |
| ORIGINAL RELEASE FOR PRODUCTION | | | 12/7/73 | |



HOLE DESCRIPTION REQ.
 A — .191-.194 DIA. — 2
 B — 3/4 DIA. — 1

| REQ'D | ITEM | PART NUMBER | DESCRIPTION | SYM. |
|-------|------|-------------|-------------|------|
| 2 | 1 | NT1290632-L | NUT, ROUND | A |

LIST OF MATERIAL
 THE TECHNICAL MATERIEL CORP.
 MAMARONECK, NEW YORK

HANDSET, BRACKET

| | | | | | |
|-------------|---|---------------|--------|----------|--|
| QTY / UNIT | 1 | MODEL USED ON | AX5781 | ASSY NO. | |
| APPLICATION | | | | | |
| CODE | | | | | |

| | | | | | |
|---|-------------|-------|-----------|----------|--------|
| UNLESS OTHERWISE SPECIFIED DIMENSIONS ARE IN INCHES AND INCLUDE CHEMICALLY APPLIED OR PLATED FINISHES | | | | | |
| DECIMALS | X ± .05 | TOLS. | FRACTIONS | 1/64 | ANGLES |
| | .XX ± .01 | | | 0° - 30' | |
| | .XXX ± .005 | | | | |
| MATERIAL | .064 ALUM. | | | | |
| FINISH | 5052 H32 | | | | |
| | GLOSS BLACK | | | | |

| | | | |
|----------------|-------------|---------|---------|
| DATE | DATE | DATE | DATE |
| 12-6-73 | | | |
| MECH. DES. | ELECT. DES. | CHECKED | DRAWN |
| | | | qe. |
| FINAL APPROVAL | F. BUDETTI | | |
| DATE | DATE | DATE | DATE |
| | | | 1/17/73 |

SCALE 1:1

SHEET OF

ISSUE

SIZE CODE IDENT. NO. DWG NO.

B 82679 MS6479

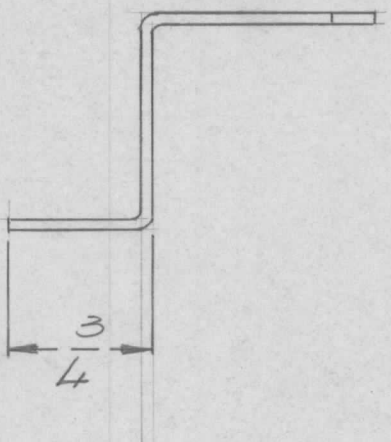
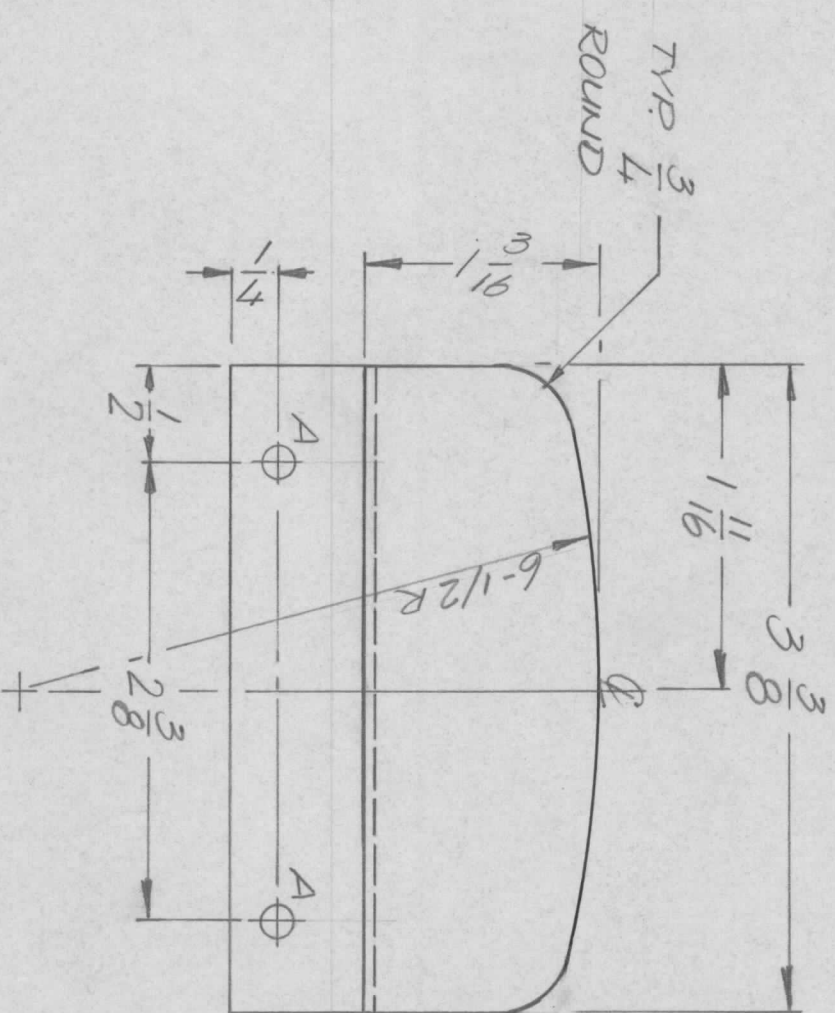
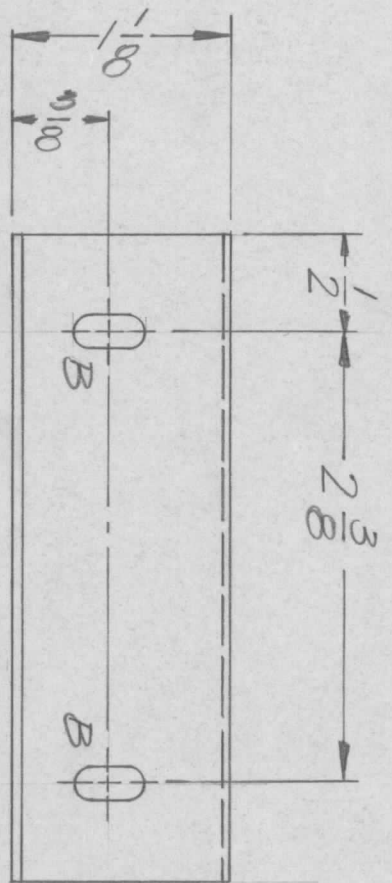
1 MS 6479

THE TECHNICAL MATERIEL CORPORATION

NOTICE TO PERSONS RECEIVING THIS DRAWING

dislosed hereon. This drawing is issued in confidence for engineering information only and may not be reproduced or used to manufacture anything shown hereon without permission from THE TECHNICAL MATERIEL CORPORATION to the user. This drawing is loaned for mutual assistance and is subject to recall at any time.

| REVISIONS | | | | | | | |
|-----------|-------|------|------|-----|---------------------------------|---------|----------|
| EMN. NO. | DRAFT | CHKD | ZONE | LTR | DESCRIPTION | DATE | APPROVED |
| | DV | | | | ORIGINAL RELEASE FOR PRODUCTION | 12/7/73 | |



HOLE DESCRIPTION REQ.
 A — 11/64 DIA. — 2
 B — 11/64 x 3/8 SLOT — 2

| REQ'D ITEM | PART NUMBER | DESCRIPTION | SYM. |
|------------|-------------|------------------|------|
| | F. BUDETTI | LIST OF MATERIAL | |

| | | | | | |
|-------------|---|---------------|---------|----------|--|
| QTY / UNIT | 1 | MODEL USED ON | AXS-181 | ASSY NO. | |
| APPLICATION | | | | | |
| CODE | | | | | |

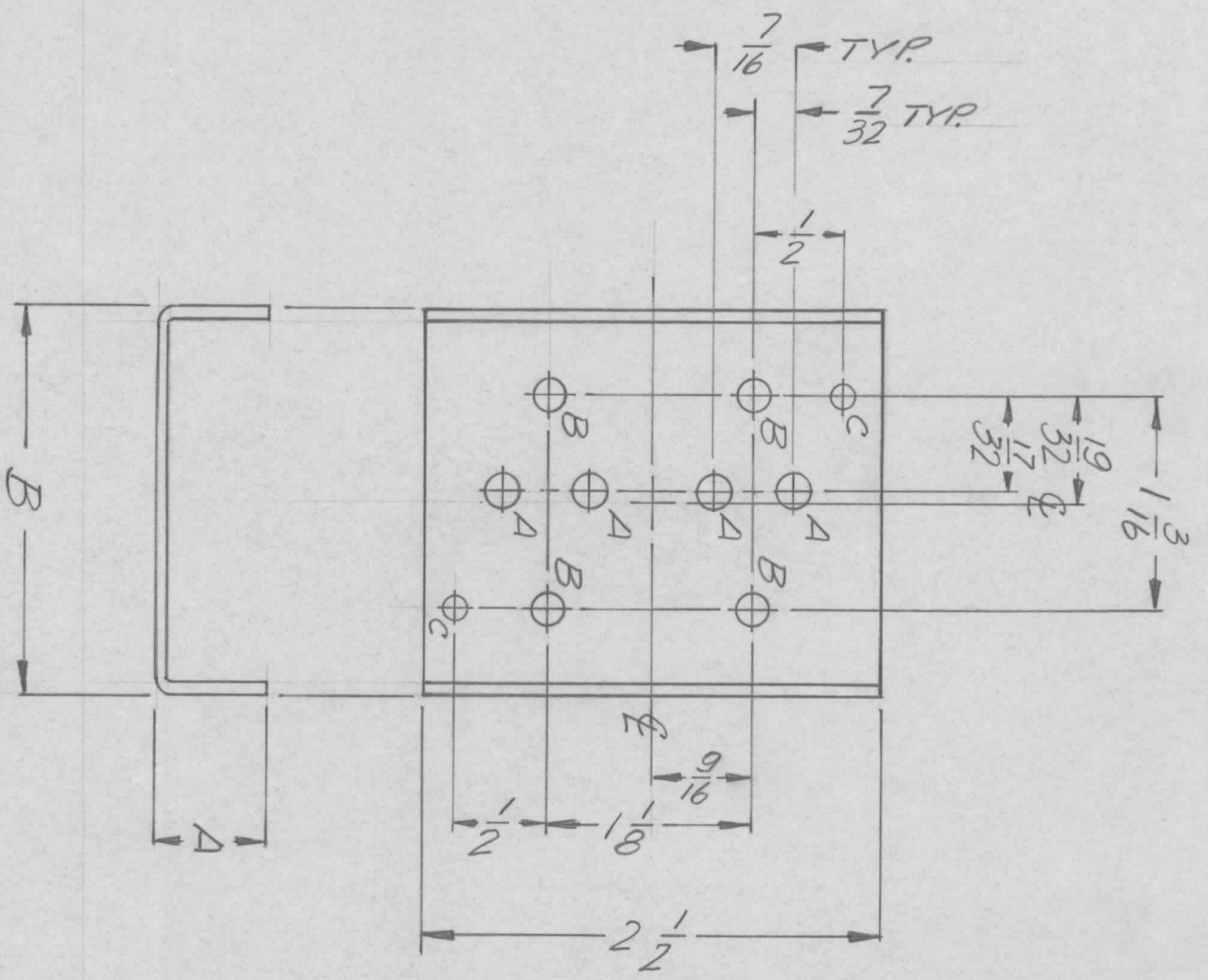
| | | | |
|--------------------|----------|-----------|----------|
| DECIMALS | .X ± .05 | FRACTIONS | 1/64 |
| .XX ± .01 | TOLS. | ANGLES | 0° - 30° |
| .XXX ± .005 | | | |
| MATERIAL .064 ALUM | | | |
| FINISH 5052 H32 | | | |
| FINISH GLOSS BLACK | | | |

| | | |
|---------------|------|--|
| FINAL APPROV. | DATE | THE TECHNICAL MATERIEL CORP. MAMARONECK, NEW YORK |
| MECH. DES. | DATE | |
| ELECT. DES. | DATE | |
| CHECKED | DATE | BRACKET, HANDSET |
| DRAWN | DATE | |

| | | | |
|-------|-----------------|---------|-------|
| SIZE | CODE IDENT. NO. | DWG NO. | ISSUE |
| B | 82679 | MS6480 | Ø |
| SCALE | 1" = 1" | SHEET | OF |

NOTICE TO PERSONS RECEIVING THIS DRAWING
 THE TECHNICAL MATERIEL CORPORATION claims proprietary right in the material disclosed hereon. This drawing is issued in confidence for engineering information only and may not be reproduced or used to manufacture anything shown hereon without permission from THE TECHNICAL MATERIEL CORPORATION to the user. This drawing is loaned for mutual assistance and is subject to recall at any time.

| REVISIONS | | | | | | | |
|-----------|-------|------|------|-----|---------------------------------|----------|----------|
| EMN NO. | DRAFT | CHKD | ZONE | LTR | DESCRIPTION | DATE | APPROVED |
| | | | | | ADD 2 'C' HOLES | 11/14/73 | |
| | | | | | ORIGINAL RELEASE FOR PRODUCTION | 1-25-77 | * |



| | | |
|-----------|------|-------|
| TMC P/N | A | B |
| MS 6490-1 | 5/8 | 2 1/8 |
| -2 | 9/16 | 1 3/4 |

HOLE DESCRIPTION REQ.

A — 3/8 DIA. — 4

B — 1/32 DIA. — 4

C — 1/8 DIA. — 2

| REQ'D ITEM | PART NUMBER | DESCRIPTION | SYM. |
|------------------|-------------|-------------|------|
| LIST OF MATERIAL | | | |

| DATE | DATE | DATE | DATE |
|---------|------|------|------|
| 1/10/73 | | | |

THE TECHNICAL MATERIEL CORP.
MAMARONECK, NEW YORK

PLATE, HEAT SINK

| | | | |
|------|-----------------|---------|-------|
| SIZE | CODE IDENT. NO. | DWG NO. | ISSUE |
| B | 82679 | MS 6490 | 0 |

| DECIMALS | TOLS. | FRACTIONS | ANGLES |
|-------------|-------|-----------|----------|
| .X ± .05 | | 1/64 | |
| .XX ± .01 | | | 90° .30' |
| .XXX ± .005 | | | |

UNLESS OTHERWISE SPECIFIED DIMENSIONS ARE IN INCHES AND INCLUDE CHEMICALLY APPLIED OR PLATED FINISHES

| | |
|-------------------|---------|
| FINAL APPROVAL | DATE |
| <i>F. BUDETTI</i> | 1/10/73 |

| | |
|-------------|------|
| ELECT. DES. | DATE |
| | |

| | |
|---------|------|
| CHECKED | DATE |
| | |

| | |
|-----------|---------|
| DRAWN | DATE |
| <i>96</i> | 8/29/73 |

| | |
|-----------|--|
| MATERIAL | |
| ALUM .064 | |

| | |
|--------|--|
| FINISH | |
| SL04 | |

| | |
|--------------|--|
| YEL. IRIDITE | |
|--------------|--|

| | | |
|------------|---------------|----------|
| QTY / UNIT | MODEL USED ON | ASSY NO. |
| 1 ea | BNA 515 | A4962 |

| | |
|-------------|------|
| APPLICATION | CODE |
| | |

| |
|-----------------------------|
| UNLESS OTHERWISE SPECIFIED: |
|-----------------------------|

- USE MATERIAL THICKNESS FOR MAXIMUM RADIUS ON ALL BENDS.
- ALL ANGULAR BENDS 90 DEGREES.
- REMOVE ALL BURRS AND SHARP EDGES.
- MOUNT INSERTS AFTER FINISHING.

NOTICE TO PERSONS RECEIVING THIS DRAWING

THE TECHNICAL MATERIEL CORPORATION claims proprietary right in the material and may not be reproduced or used to manufacture anything shown hereon without permission from THE TECHNICAL MATERIEL CORPORATION to the user. This drawing is loaned for mutual assistance and is subject to recall at any time.

SCALE 1:1

SHEET 1 OF 1

FCI-10-170 (10-66)