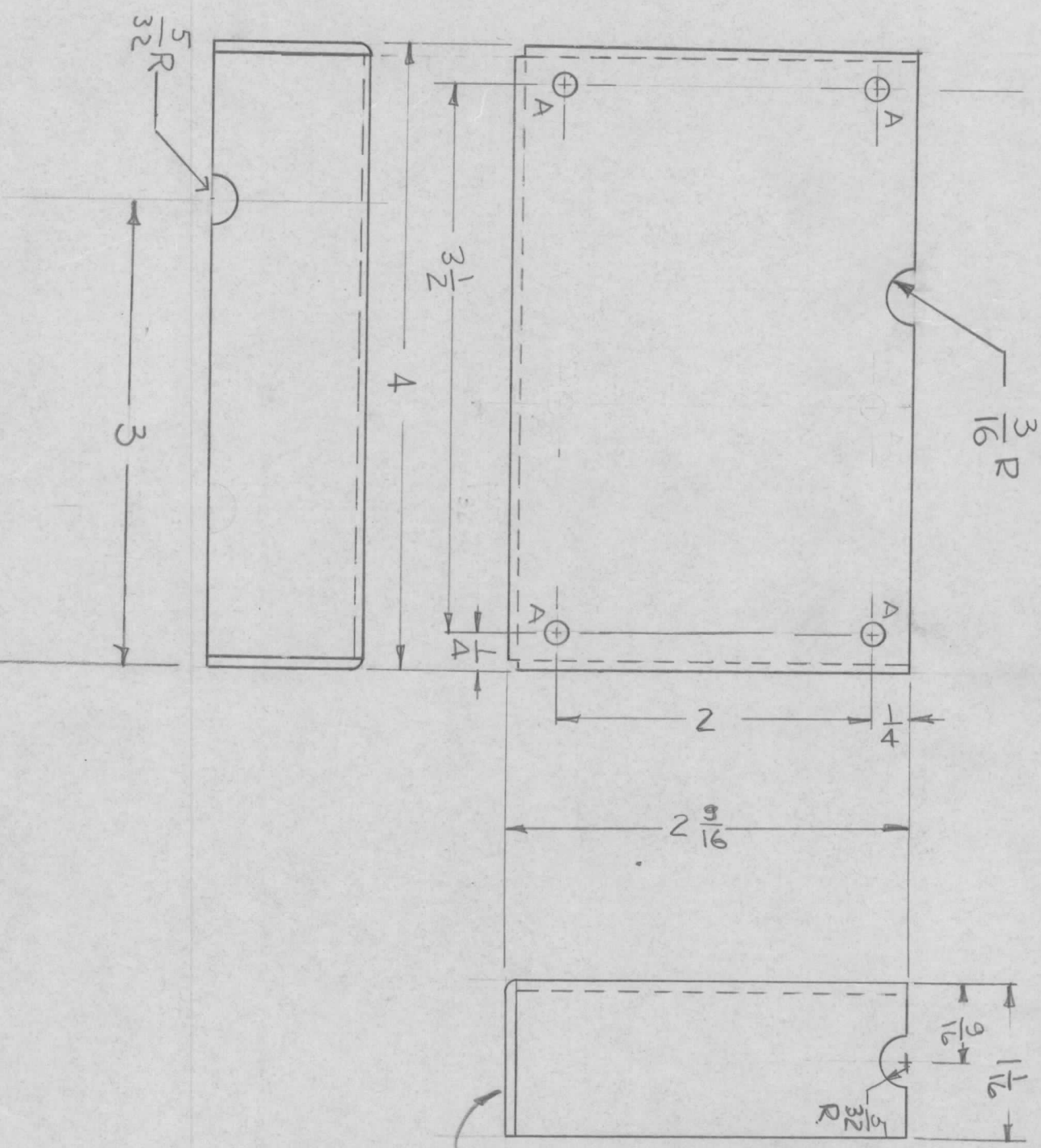


REVISIONS				DATE	APPROVED
EM.N. NO.	DRAFT	CHKD	ZONE	LTR	DESCRIPTION
21346	CDL	OK	A	Ø	ORIGINAL RELEASE FOR PRODUCTION
					DELETED 2 "A" HOLES
					4-19-74
					1-26-76
					OK



OPP
SIDE
IDENTICAL

$A \sim \frac{9}{64}$ DIA.

4 REQ'D

TIGHT CORNERS

REQ'D ITEM	PART NUMBER	DESCRIPTION	SYM.
LIST OF MATERIAL			

QTY / UNIT	1	MODEL USED ON	AX5176	ASS'Y NO.	AX5180
APPLICATION					
CODE					

DECIMALS	.X ± .05	FRACTIONS	1/64
.XX ± .01	TOLS.	ANGLES	90° .30'
.XXX ± .005			
MATERIAL .064			
ALUM 5052-H32			
FINISH			
S404 VEL IRID			

FINAL APPROVAL	DATE
MECH. DES.	DATE
ELECT. DES.	DATE
CHECKED	DATE
DRAWN	DATE

THE TECHNICAL MATERIEL CORP.			
MAMARONECK, NEW YORK			
COVER, SENSE BD			
SIZE	CODE IDENT. NO.	DWG NO.	ISSUE
B	82679	MS6476	A
SCALE		SHEET	OF

NOTICE TO PERSONS RECEIVING THIS DRAWING
THE TECHNICAL MATERIEL CORPORATION claims proprietary right in the material disclosed hereon. This drawing is issued in confidence for engineering information only and may not be reproduced or used to manufacture anything shown hereon without permission from THE TECHNICAL MATERIEL CORPORATION to the user. This drawing is loaned for mutual assistance and is subject to recall at any time.